

E25933

First Edition / March 2025

IN SEARCH OF INCREDIBLE



Service Manual



COPYRIGHT INFORMATION

No part of this manual, including the products and software described in it, may be reproduced, transmitted, transcribed, stored in a retrieval system, or translated into any language in any form or by any means, except documentation kept by the purchaser for backup purposes, without the express written permission of ASUSTeK COMPUTER INC. ("ASUS").

ASUS PROVIDES THIS MANUAL "AS IS" WITHOUT WARRANTY OF ANY KIND, EITHER EXPRESS OR IMPLIED, INCLUDING BUT NOT LIMITED TO THE IMPLIED WARRANTIES OR CONDITIONS OF MERCHANTABILITY OR FITNESS FOR A PARTICULAR PURPOSE. IN NO EVENT SHALL ASUS, ITS DIRECTORS, OFFICERS, EMPLOYEES OR AGENTS BE LIABLE FOR ANY INDIRECT, SPECIAL, INCIDENTAL, OR CONSEQUENTIAL DAMAGES (INCLUDING DAMAGES FOR LOSS OF PROFITS, LOSS OF BUSINESS, LOSS OF USE OR DATA, INTERRUPTION OF BUSINESS AND THE LIKE), EVEN IF ASUS HAS BEEN ADVISED OF THE POSSIBILITY OF SUCH DAMAGES ARISING FROM ANY DEFECT OR ERROR IN THIS MANUAL OR PRODUCT.

Products and corporate names appearing in this manual may or may not be registered trademarks or copyrights of their respective companies, and are used only for identification or explanation and to the owners' benefit, without intent to infringe.

SPECIFICATIONS AND INFORMATION CONTAINED IN THIS MANUAL ARE FURNISHED FOR INFORMATIONAL USE ONLY, AND ARE SUBJECT TO CHANGE AT ANY TIME WITHOUT NOTICE, AND SHOULD NOT BE CONSTRUED AS A COMMITMENT BY ASUS. ASUS ASSUMES NO RESPONSIBILITY OR LIABILITY FOR ANY ERRORS OR INACCURACIES THAT MAY APPEAR IN THIS MANUAL, INCLUDING THE PRODUCTS AND SOFTWARE DESCRIBED IN IT.

Copyright © 2025 ASUSTeK COMPUTER INC. All Rights Reserved.

LIMITATION OF LIABILITY

Circumstances may arise where because of a default on ASUS' part or other liability, you are entitled to recover damages from ASUS. In each such instance, regardless of the basis on which you are entitled to claim damages from ASUS, ASUS is liable for no more than damages for bodily injury (including death) and damage to real property and tangible personal property; or any other actual and direct damages resulted from omission or failure of performing legal duties under this Warranty Statement, up to the listed contract price of each product.

ASUS will only be responsible for or indemnify you for loss, damages or claims based in contract, tort or infringement under this Warranty Statement.

This limit also applies to ASUS' suppliers and its reseller. It is the maximum for which ASUS, its suppliers, and your reseller are collectively responsible.

UNDER NO CIRCUMSTANCES IS ASUS LIABLE FOR ANY OF THE FOLLOWING: (1) THIRD-PARTY CLAIMS AGAINST YOU FOR DAMAGES; (2) LOSS OF, OR DAMAGE TO, YOUR RECORDS OR DATA; OR (3) SPECIAL, INCIDENTAL, OR INDIRECT DAMAGES OR FOR ANY ECONOMIC CONSEQUENTIAL DAMAGES (INCLUDING LOST PROFITS OR SAVINGS), EVEN IF ASUS, ITS SUPPLIERS OR YOUR RESELLER IS INFORMED OF THEIR POSSIBILITY.

SERVICE AND SUPPORT

Visit our multi-language website at <https://www.asus.com/support/>

Table of Contents

Chapter 1: Introduction

Disclaimer	6
Safety precautions.....	6
Pre-repair checklist.....	8
Repair tools.....	9
Diagnostic tools.....	9
Major components	10

Chapter 2: Service Procedures

Base plate	14
Removal.....	15
Installation.....	16
Stand	17
Removal.....	18
Installation.....	20
Display panel module	22
Removal.....	23
Installation.....	26
Display panel.....	29
Removal.....	30
Installation.....	34
Speakers	38
Removal.....	39
Installation.....	40
Motherboard shield	41
Removal.....	42
Installation.....	43

M.2 SSD module	44
Removal	45
Installation.....	46
RAM module	47
Removal	48
Installation.....	49
WLAN module.....	50
Removal	51
Installation.....	52
Fan module	53
Removal	54
Installation.....	55
Heat sink	56
Removal	57
Installation.....	59
Camera module	60
Removal	61
Installation.....	63
I/O board	65
Removal	66
Installation.....	67
Motherboard	68
Removal	69
Installation.....	72
Rear cover	74
Removal	75
Installation.....	79

Appendix

Wiring and connection diagrams.....	84
-------------------------------------	----

Chapter 1:

Introduction

Disclaimer

ASUS is not responsible for direct, indirect, intentional or unintentional damages resulting from improper installation and operation.

Safety precautions

- Before handling components, use a grounded wrist strap or touch a safely grounded object to avoid damaging them due to static electricity.
- Keep liquids or moisture away from your device to avoid short circuits.
- Remove rings, watches, and any other metal objects from your hands.
- Hold components by the edges to avoid touching the ICs.
- Properly install all components before connecting the AC power.
- Do not use power adapters or batteries from other devices to reduce the risk of injury to persons due to fire or explosion. Use only certified power adapters or batteries supplied by the manufacturer or authorized retailers.
- Detach all clips or flaps before removing cables to prevent damage.

- Disconnect cables, connectors, and power plugs by pulling the plug evenly to avoid damage.
- Use the correct screw models on your device to prevent damage.
- Confirm that the cable orientation is correct before connecting any cables.
- Fully remove all adhesive residue after removing and before installing any components.
- Photograph the appearance of cables, cable routing, connectors, and screws for later reference before proceeding with each step.

Pre-repair checklist

- Read the entire manual before starting any service procedures and follow all instructions.
 - Back up the data on your device.
 - Place your device on a clean and stable surface.
 - Turn off your device.
 - Disconnect all connected peripherals and cables.
 - Disconnect all power cables and remove the battery pack (if applicable).
-

IMPORTANT!

- If you are uncertain about performing the described service procedures, stop and contact an authorized service center for assistance.
 - Purchase replacement components from authorized retailers of this device to ensure maximum compatibility and reliability.
-

NOTE:

- The illustrations are for reference only.
 - The service procedures described in this manual depend on the model configuration and may not reflect the entire servicing process. To service components that are not covered in this manual, please visit an authorized service center for further assistance.
 - Keep all adhesive tape, insulating materials, screws, and other removable items in a safe place until the service procedure is completed, as they may be needed during installation.
-

Repair tools



Screwdriver



Plastic blade



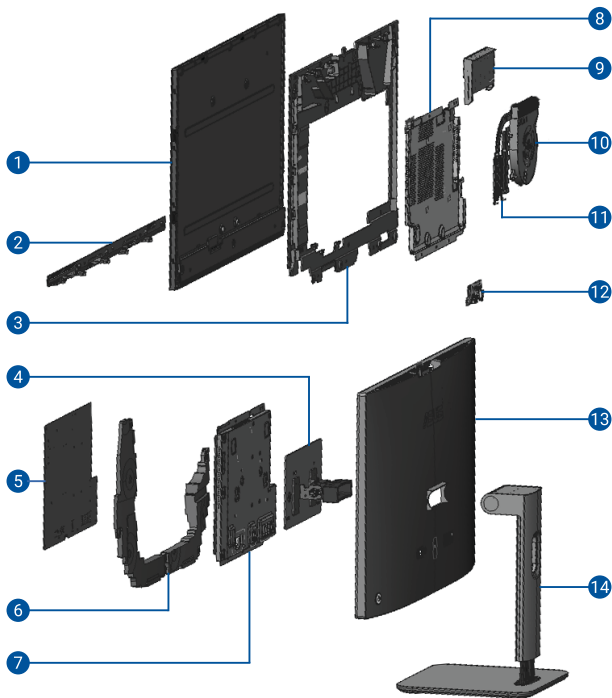
Tweezers

Diagnostic tools

Use ASUS System Diagnostics after completing any service procedures to ensure that all components are working properly.

For more information, visit www.asus.com/support/FAQ/1048490/.

Major components



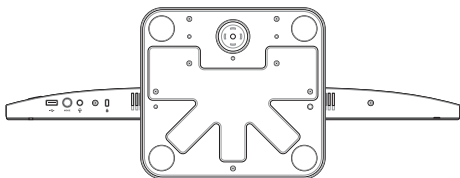
- | | |
|------------------------|-----------------------|
| 1. Display panel | 8. Motherboard shield |
| 2. Bottom bezel | 9. Camera module |
| 3. Display bracket | 10. Fan module |
| 4. Stand mount | 11. Heat sink |
| 5. Motherboard | 12. I/O board |
| 6. Speakers | 13. Rear cover |
| 7. Motherboard bracket | 14. Stand |

This image shows a single page of white paper with horizontal ruling lines. The lines are evenly spaced and run across the width of the page. There is no text or other markings on the page.

Chapter 2:

Service Procedures

Base plate

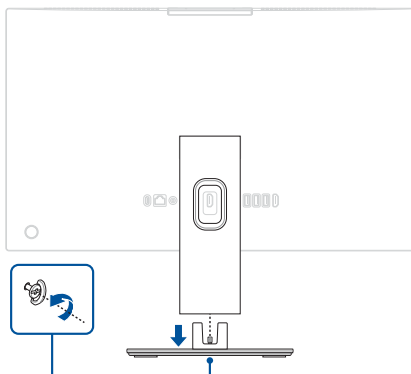


Before you begin

Read the **Safety Precautions** and complete the **Pre-repair Checklist**.

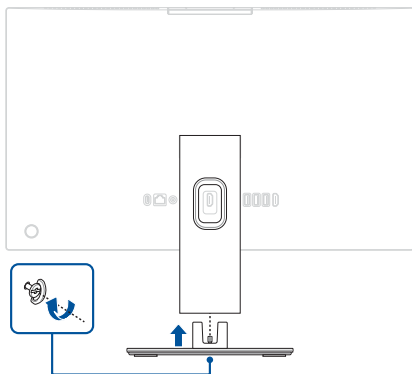
Removal

Loosen the screw without removing the screw from the base plate, then remove the base plate.

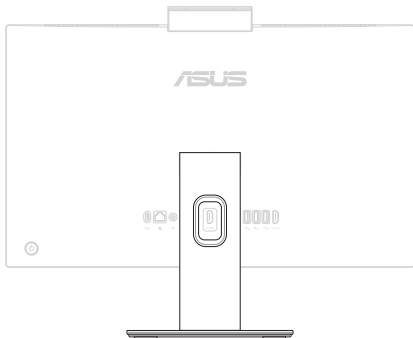


Installation

Align and install the base plate, then secure the base plate using the screw.



Stand



Before you begin

1. Read the **Safety Precautions** and **Pre-repair Checklist**.
2. Remove the following components:
 - Base plate

Screw list

Fixed-height stand

- ⊕ M4.0 X 6.0L (3pcs)

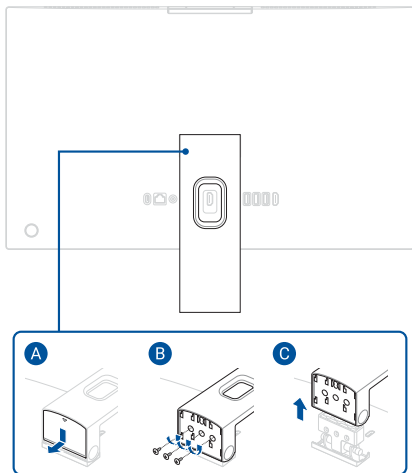
Height-adjustable stand

- ⊕ M4.0 X 10.0L (4pcs)

Removal

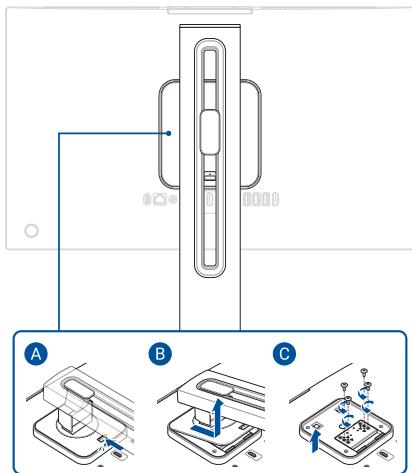
Fixed-height stand

1. Remove the screw cover.
2. Remove the screw(s), then remove the stand.



Height-adjustable stand

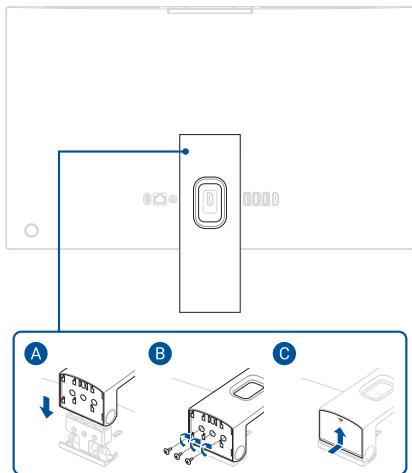
1. Push the latch into the unlocked position, then lift and remove the stand.
2. Remove the screw(s), then remove the stand bracket.



Installation

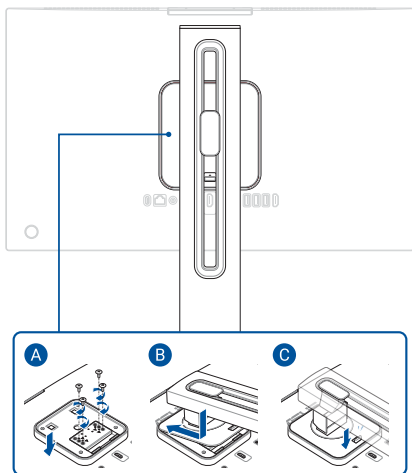
Fixed-height stand

1. Install the stand, then secure the stand using the screw(s) you removed earlier.
2. Install the screw cover.
3. Install the components you removed in the *Before you begin* section.



Height-adjustable stand

1. Install the stand bracket, then secure the stand bracket using the screw(s) you removed earlier.
2. Install the stand and gently press down until the latch clicks into place.
3. Install the components you removed in the *Before you begin* section.



Display panel module



Before you begin

1. Read the **Safety Precautions** and **Pre-repair Checklist**.
2. Remove the following components:
 - Base plate
 - Stand

Screw list

White model

- ⊕ M3.0 X 4.0L (4pcs)

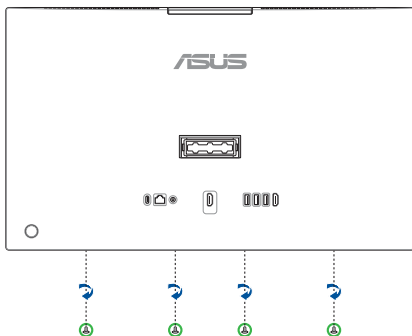
Black model

- ⊕ M3.0 X 5.0L (4pcs)

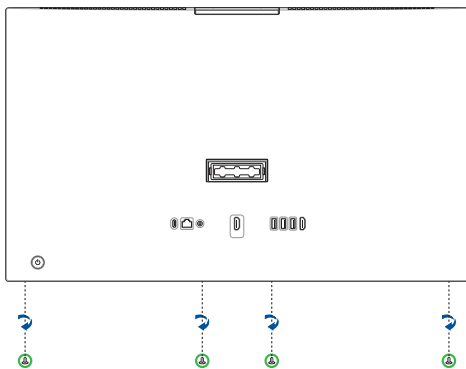
Removal

1. Remove the screw(s).

24" models

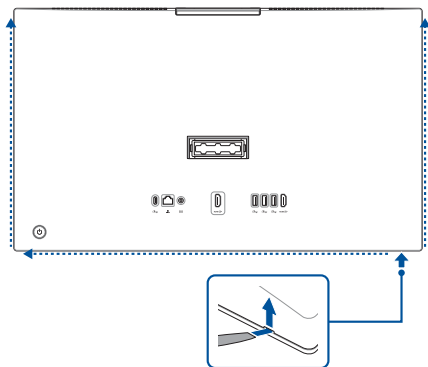


27" models

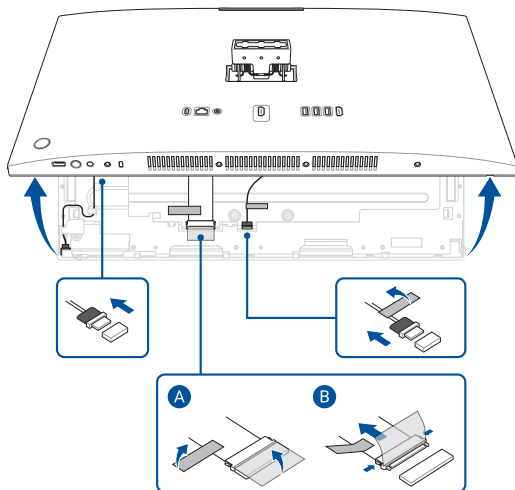


2. Pry open the indicated area of the rear cover as shown in the illustration below.

IMPORTANT! Avoid sliding the plastic blade along the side of your device or air vents to prevent damage.

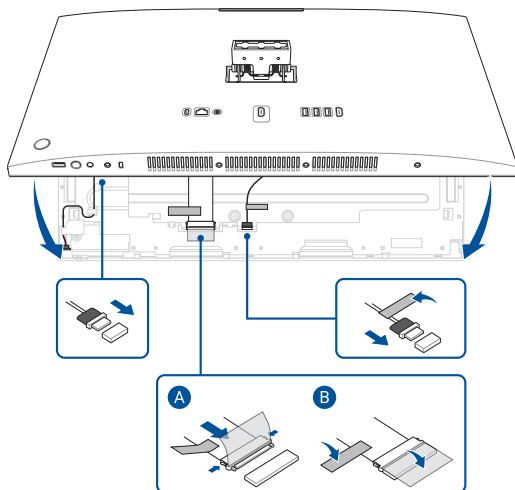


3. Lift the rear cover without removing it completely, then hold it in place above the display panel module.
4. Disconnect the cable(s), then remove the rear cover.

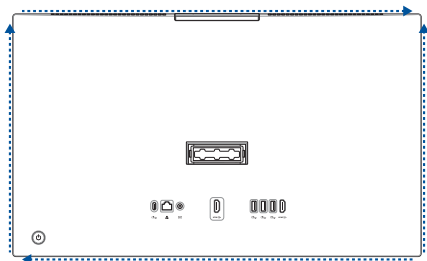


Installation

1. Hold the rear cover in place above the display panel module.
2. Reconnect the cable(s), then lower the rear cover into place.

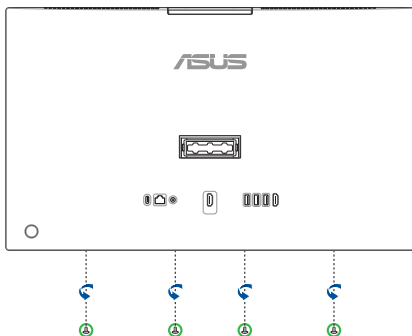


3. Gently press down on the rear cover until it clicks into place.

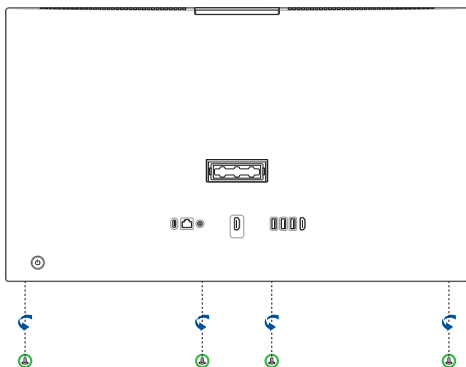


4. Secure the rear cover using the screw(s) you removed earlier.
5. Install the components you removed in the *Before you begin* section.

24" models



27" models



Display panel



Before you begin

IMPORTANT!

- This component is fragile. Damage may occur if the service procedure is performed incorrectly. If you are uncertain about proceeding, stop and contact an authorized service center for assistance.
- Do not bend the display panel in any way to avoid risk of display panel leakage.

-
1. Read the **Safety Precautions** and **Pre-repair Checklist**.
 2. Remove the following components:
 - Base plate
 - Stand
 - Display panel module

Screw list

24" models

- ⊕ M3.0 X 3.5L (15pcs)

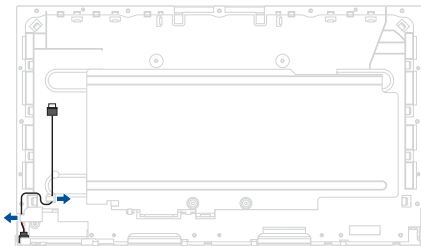
27" models

- ⊕ M3.0 X 5.0L (18pcs)

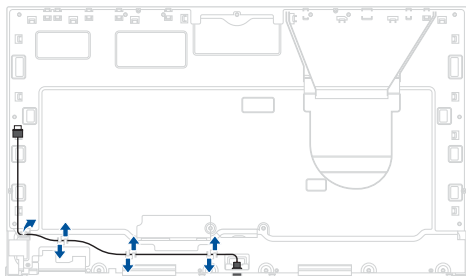
Removal

1. Remove the cable from the cable guide(s).

24" models

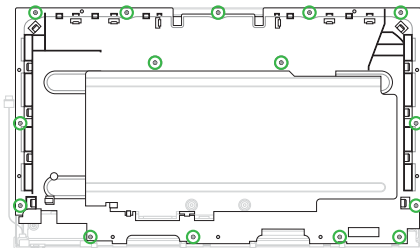


27" models

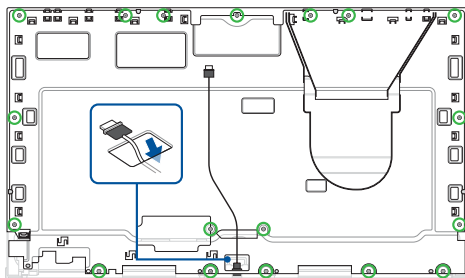


2. Remove the screw(s).
3. Thread the cable through the opening in the display bracket (on selected models).
4. Remove the display bracket.

24" models

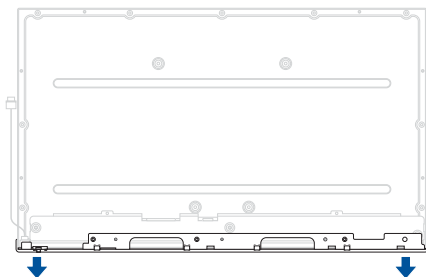


27" models

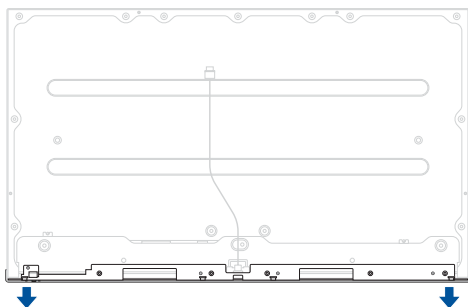


5. Remove the bottom bezel.

24" models

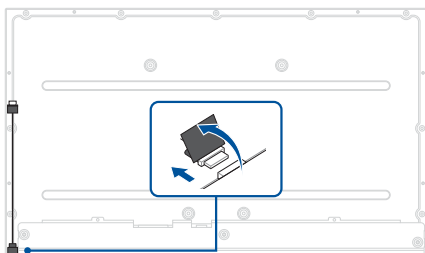


27" models

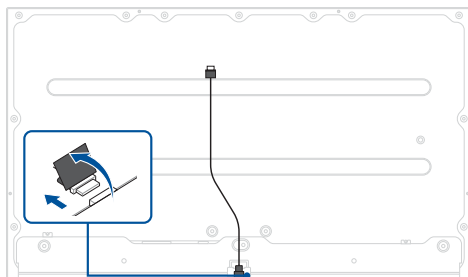


6. Disconnect and remove the cable.

24" models



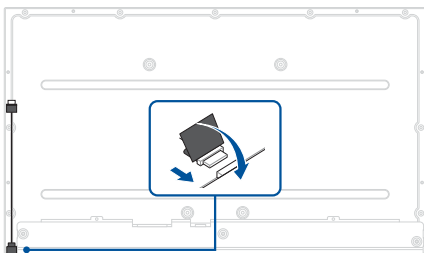
27" models



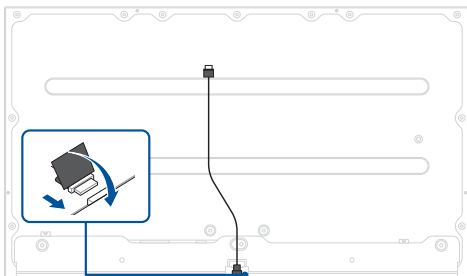
Installation

1. Reconnect the cable.

24" models

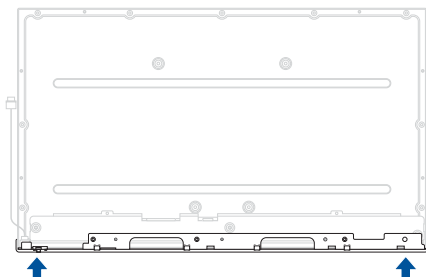


27" models

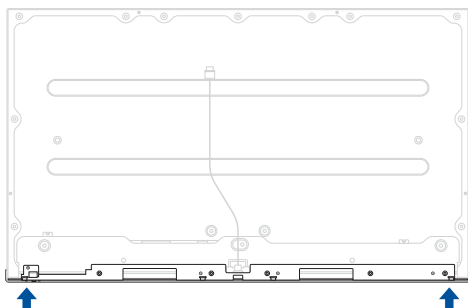


2. Install the bottom bezel.

24" models

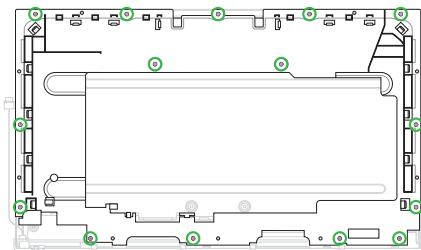


27" models

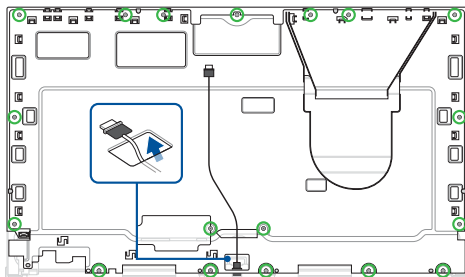


3. Install the display bracket.
4. Thread the cable through the opening in the display bracket (on selected models).
5. Secure the display bracket using the screw(s) you removed earlier.

24" models



27" models

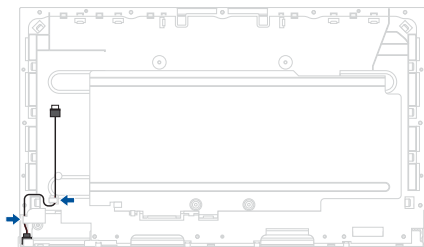


6. Route the cable through the cable guide(s).

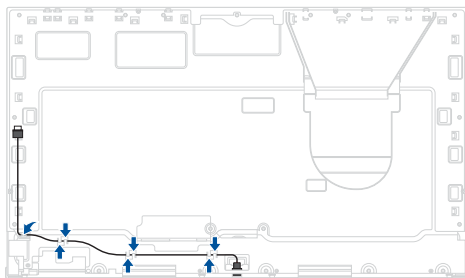
IMPORTANT! Damage may occur if cables are not properly routed through the cable guides. Confirm that all cables are routed through each of the indicated cable guides before proceeding.

7. Install the components you removed in the *Before you begin* section.

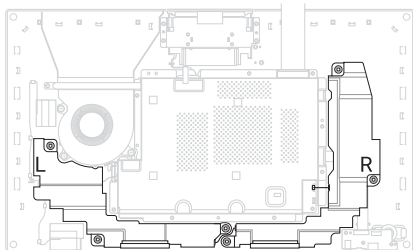
24" models



27" models



Speakers



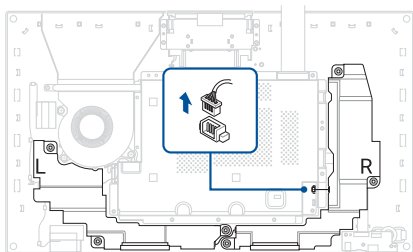
Before you begin

1. Read the **Safety Precautions** and **Pre-repair Checklist**.
2. Remove the following components:
 - Base plate
 - Stand
 - Display panel module

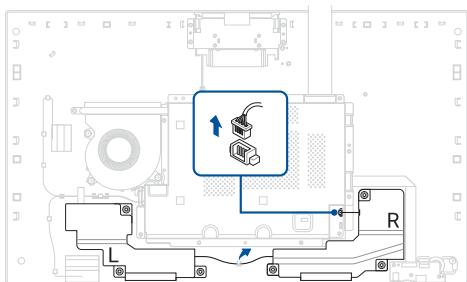
Removal

Disconnect the cable, then remove the speakers.

24" models



27" models



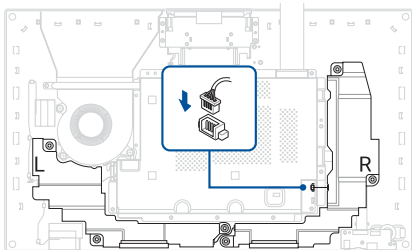
Installation

1. Install the speakers, then reconnect the cable.
2. Route the cable through the cable guide(s).

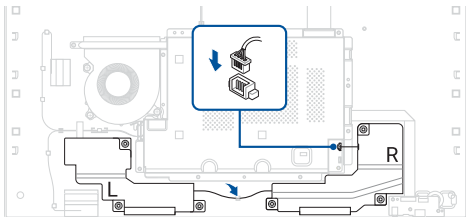
IMPORTANT! Damage may occur if cables are not properly routed through the cable guides. Confirm that all cables are routed through each of the indicated cable guides before proceeding.

3. Install the components you removed in the *Before you begin* section.

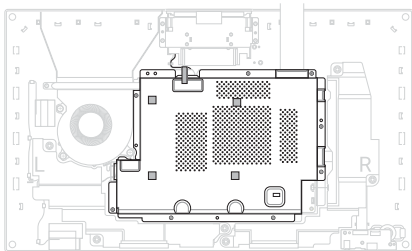
24" models



27" models



Motherboard shield



Before you begin

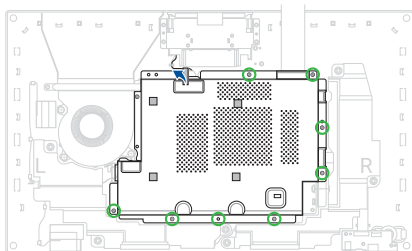
1. Read the **Safety Precautions** and **Pre-repair Checklist**.
2. Remove the following components:
 - Base plate
 - Stand
 - Display panel module

Screw list

- ⊕ M3.0 X 5.0L (8pcs)

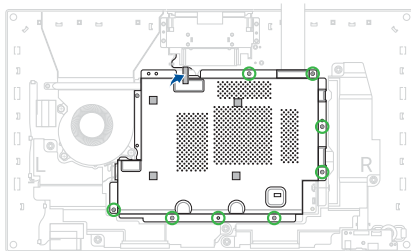
Removal

Remove the tape and remove the screw(s), then remove the motherboard shield.

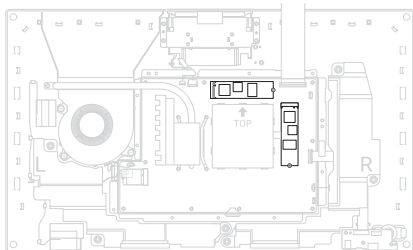


Installation

1. Install the motherboard shield, then secure the motherboard shield using the screw(s) you removed earlier and reattach the tape.
2. Install the components you removed in the *Before you begin* section.



M.2 SSD module



Before you begin

IMPORTANT! Thermal paste, thermal pads, liquid metal, or other thermal interface materials must be thoroughly removed and replaced if this component is removed. Ensure that replacement materials are available before proceeding, or contact an authorized service center for assistance.

1. Read the **Safety Precautions** and **Pre-repair Checklist**.
2. Remove the following components:
 - Base plate
 - Stand
 - Display panel module
 - Motherboard shield

Screw list

24" models

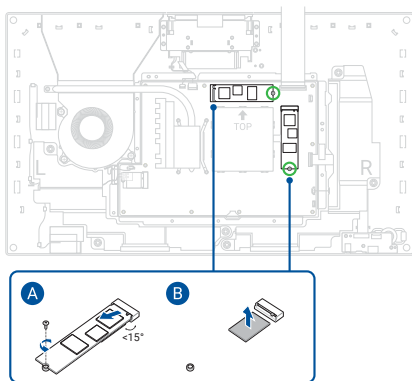
- ⊕ M2.0 X 4.0L (1-2pcs)

27" models

- ⊕ M2.0 X 3.5L (1-2pcs)

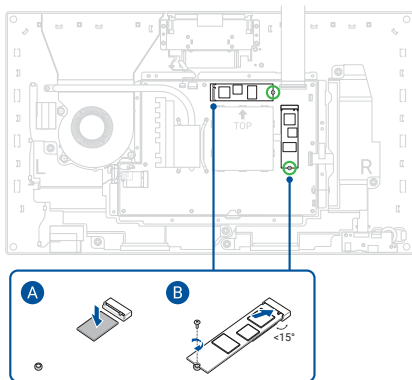
Removal

1. Remove the screw(s), then remove the M.2 SSD module(s) from the mother board.
2. Remove the thermal pad(s) from the mother board.

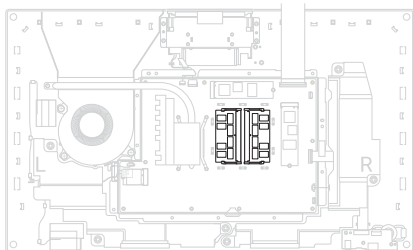


Installation

1. Attach the thermal pad(s) to the motherboard.
2. Install the M.2 SSD module(s), then secure the M.2 SSD module(s) using the screw(s) you removed earlier.
3. Install the components you removed in the *Before you begin* section.



RAM module

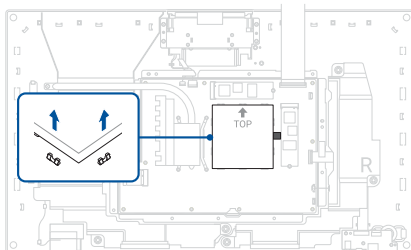


Before you begin

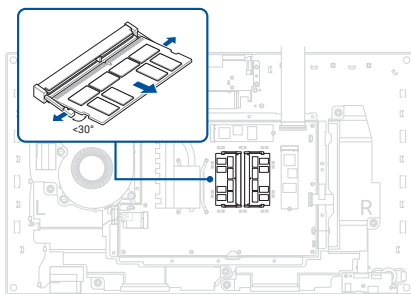
1. Read the **Safety Precautions** and **Pre-repair Checklist**.
2. Remove the following components:
 - Base plate
 - Stand
 - Display panel module
 - Motherboard shield

Removal

1. Remove the RAM shield.

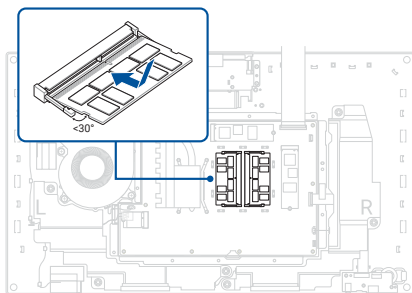


2. Push the clips outwards to remove the RAM module(s).

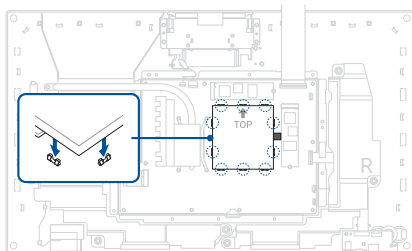


Installation

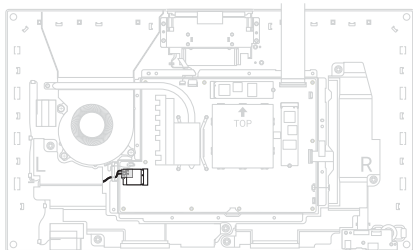
1. Align and insert the RAM module(s) into the RAM module slot(s).



2. Install the RAM shield.
3. Install the components you removed in the *Before you begin* section.



WLAN module



Before you begin

1. Read the **Safety Precautions** and **Pre-repair Checklist**.
2. Remove the following components:
 - Base plate
 - Stand
 - Display panel module
 - Motherboard shield

Screw list

24" models

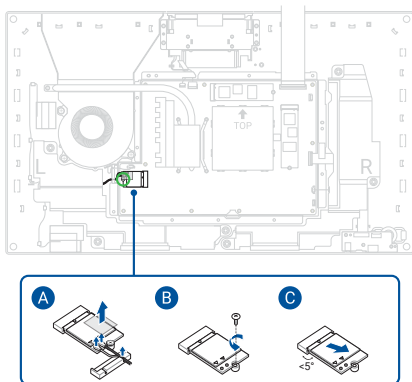
- ⊕ M2.0 X 4.0L (1pc)

27" models

- ⊕ M2.0 X 3.5L (1pc)

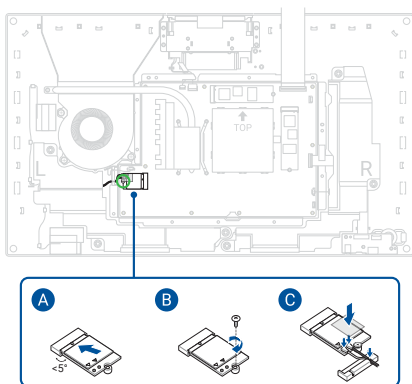
Removal

1. Remove the polyester film, then disconnect the cable(s).
2. Remove the screw.
3. Remove the WLAN module.

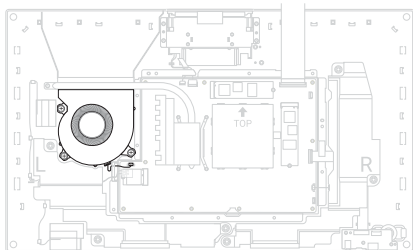


Installation

1. Install the WLAN module.
2. Secure the WLAN module using the screw you removed earlier.
3. Reconnect the cable(s), then attach the polyester film.
4. Install the components you removed in the *Before you begin* section.



Fan module



Before you begin

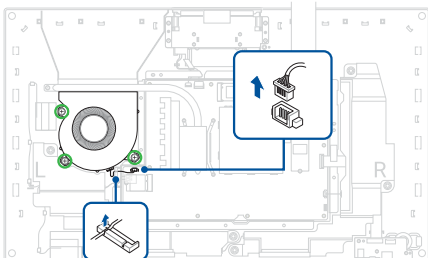
1. Read the **Safety Precautions** and **Pre-repair Checklist**.
2. Remove the following components:
 - Base plate
 - Stand
 - Display panel module
 - Motherboard shield

Screw list

- ⊕ M2.0 X 3.0L+6 (3pcs)

Removal

1. Disconnect the cable.
2. Remove the screw(s), then remove the fan.

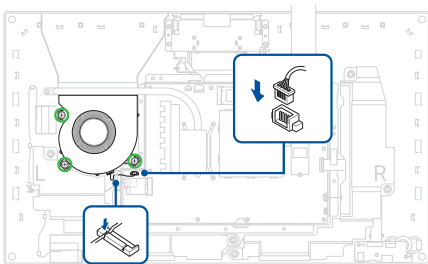


Installation

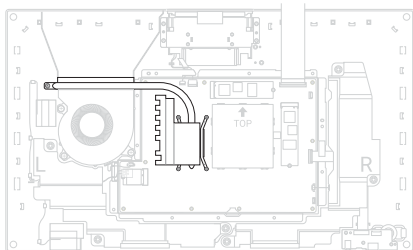
1. Install the fan, then secure the fan using the screw(s) you removed earlier.
2. Route the cable through the cable guide(s).

IMPORTANT! Damage may occur if cables are not properly routed through the cable guides. Confirm that all cables are routed through each of the indicated cable guides before proceeding.

3. Reconnect the cable.
4. Install the components you removed in the *Before you begin* section.



Heat sink



Before you begin

IMPORTANT! Thermal paste, thermal pads, liquid metal, or other thermal interface materials must be thoroughly removed and replaced if this component is removed. Ensure that replacement materials are available before proceeding, or contact an authorized service center for assistance.

1. Read the **Safety Precautions** and **Pre-repair Checklist**.
2. Remove the following components:
 - Base plate
 - Stand
 - Display panel module
 - Motherboard shield

Screw list

24" models

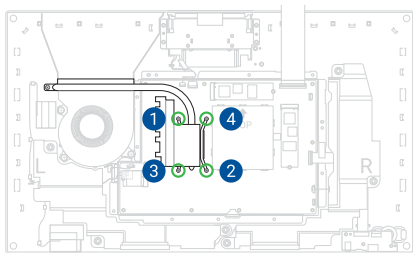
- ⊕ Captive screw (4pcs)
- ⊕ M2.0 X 4.0L (1pc)

27" models

- ⊕ Captive screw (4pcs)
- ⊕ M2.0 X 3.5L (1pc)

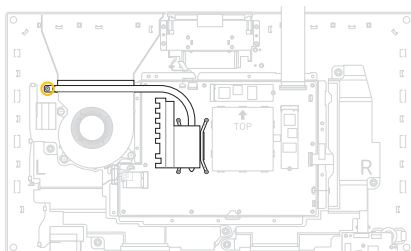
Removal

1. Loosen the captive heat sink screw(s) one by one in the sequence shown in the illustration below without removing the screw(s).



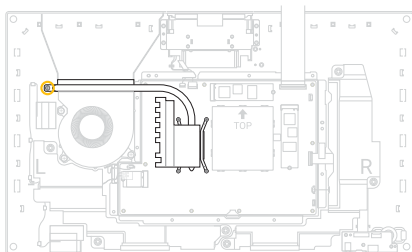
2. Remove the screw, then remove the heat sink.

IMPORTANT! Vertically lift the heat sink to prevent damage.

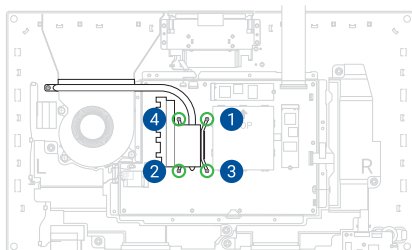


Installation

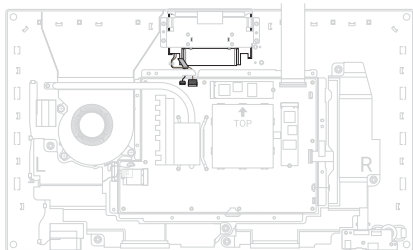
1. Install the heat sink, then secure the heat sink using the screw you removed earlier.



2. Secure the captive heat sink screw(s) one by one in the sequence shown in the illustration below.
3. Install the components you removed in the *Before you begin* section.



Camera module



Before you begin

1. Read the **Safety Precautions** and **Pre-repair Checklist**.
2. Remove the following components:
 - Base plate
 - Stand
 - Display panel module
 - Motherboard shield

Screw list

24" models

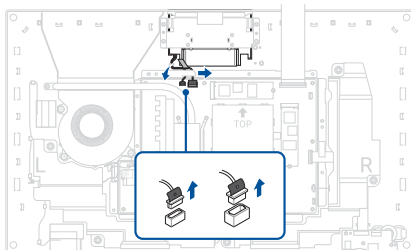
- ⊕ M2.0 X 4.0L (4pcs)

27" models

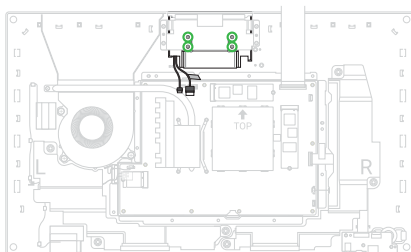
- ⊕ M2.0 X 3.5L (4pcs)

Removal

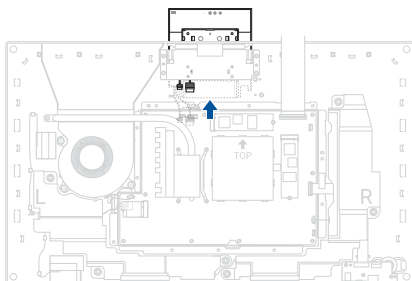
1. Disconnect the cable(s).



2. Remove the screw(s).

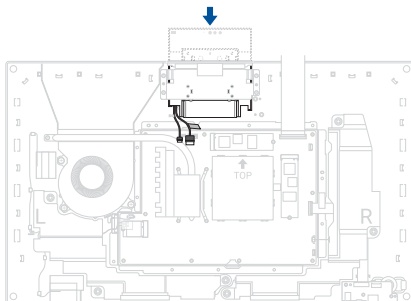


3. Slide the camera module upwards to remove it from the chassis.

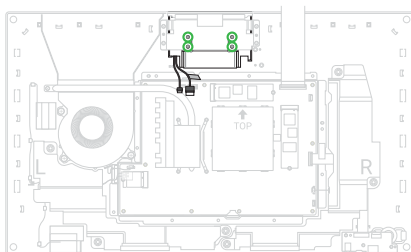


Installation

1. Slide the camera module into the chassis.



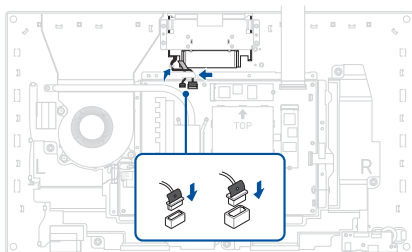
2. Secure the camera module using the screw(s) you removed earlier.



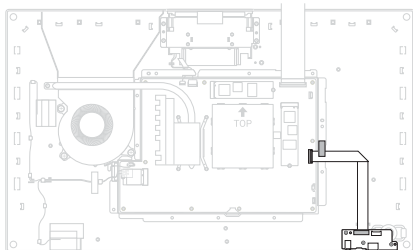
3. Route the cable through the cable guide(s).

IMPORTANT! Damage may occur if cables are not properly routed through the cable guides. Confirm that all cables are routed through each of the indicated cable guides before proceeding.

4. Reconnect the cable(s).
5. Install the components you removed in the *Before you begin* section.



I/O board



Before you begin

1. Read the **Safety Precautions** and **Pre-repair Checklist**.
2. Remove the following components:
 - Base plate
 - Stand
 - Display panel module
 - Speakers
 - Motherboard shield

Screw list

24" models

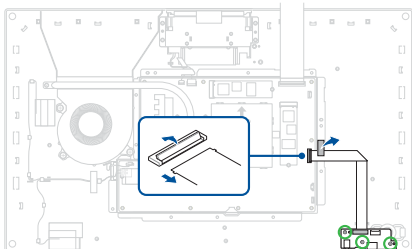
- ⊕ M2.0 X 4.0L (3pcs)

27" models

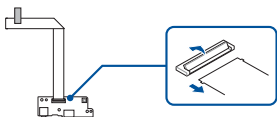
- ⊕ M2.0 X 3.5L (3pcs)

Removal

1. Remove the tape, then disconnect the cable.
2. Remove the screw(s), then remove the I/O board.

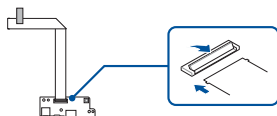


3. Disconnect the cable.

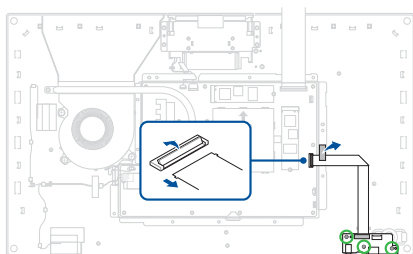


Installation

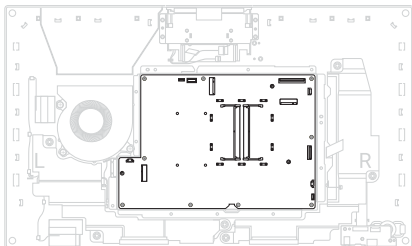
1. Reconnect the cable.



2. Install the I/O board, then secure the I/O board using the screw(s) you removed earlier.
3. Reconnect the cable, then reattach the tape.
4. Install the components you removed in the *Before you begin* section.



Motherboard



Before you begin

1. Read the **Safety Precautions** and **Pre-repair Checklist**.
2. Remove the following components:
 - Base plate
 - Stand
 - Display panel module
 - Motherboard shield
 - M.2 SSD module
 - RAM module
 - WLAN module
 - Heat sink

Screw list

24" models

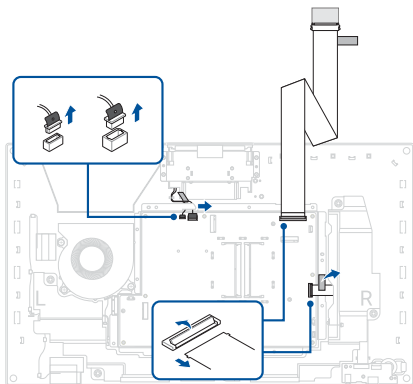
- ⊕ M2.0 X 4.0L (11pcs)

27" models

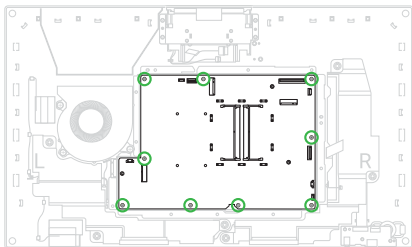
- ⊕ M2.0 X 3.5L (9pcs)
- ⊕ M2.0 X 4.0L (2pcs)

Removal

1. Remove the tape, then disconnect the cable(s).

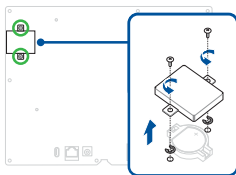


2. Remove the screw(s), then remove the motherboard.

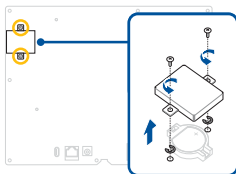


3. Flip the motherboard over.
4. Remove the screw(s), then remove the coin battery cover.

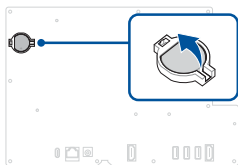
24" models



27" models

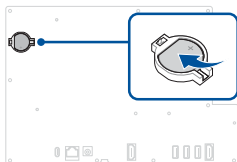


5. Remove the coin battery.



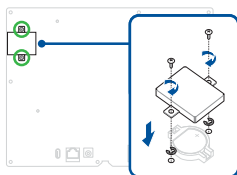
Installation

1. Install the coin battery onto the rear side of the motherboard.

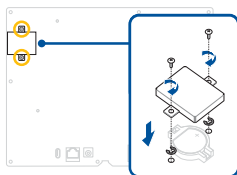


2. Install the coin battery cover, then secure the coin battery cover using the screw(s) you removed earlier.

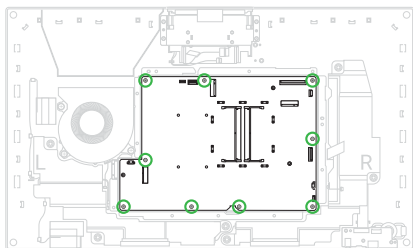
24" models



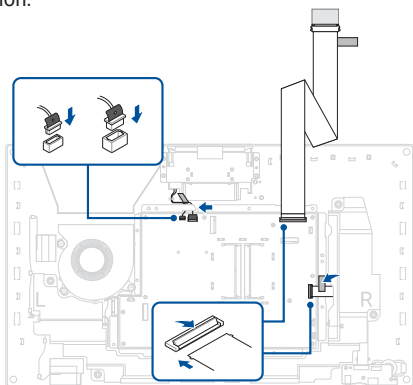
27" models



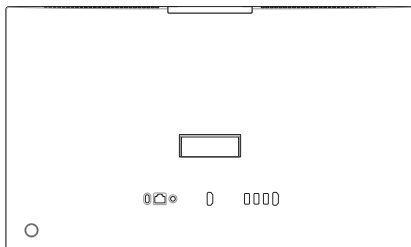
3. Flip the motherboard over.
4. Install the motherboard, then secure the motherboard using the screw(s) you removed earlier.



5. Reconnect the cable(s), then reattach the tape.
6. Install the components you removed in the *Before you begin* section.



Rear cover



Before you begin

1. Read the **Safety Precautions** and **Pre-repair Checklist**.
2. Remove the following components:
 - Base plate
 - Stand
 - Display panel module
 - Speakers
 - Motherboard shield
 - M.2 SSD module
 - RAM module
 - WLAN module

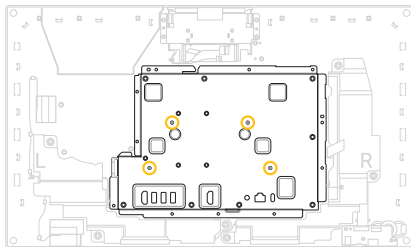
- Fan module
- Heat sink
- Camera module
- I/O board
- Motherboard

Screw list

- ⊕ M4.0 X 10.0L (4pcs)
- ⊕ M3.0 X 5.0L (6pcs)

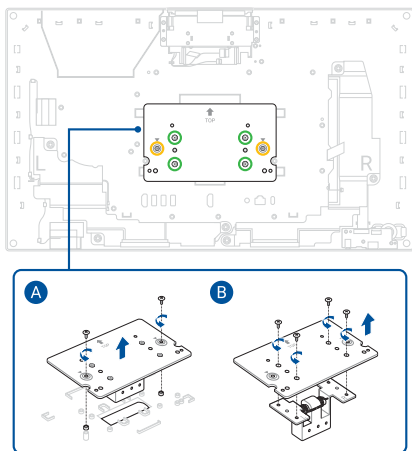
Removal

1. Remove the screw(s), then remove the motherboard bracket.

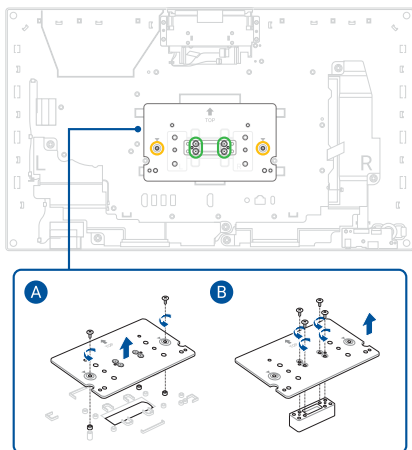


2. Remove the screw(s), then remove the stand mount.

Fixed-height stand

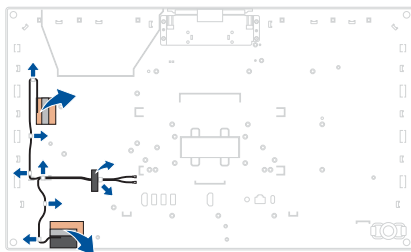


Height-adjustable stand

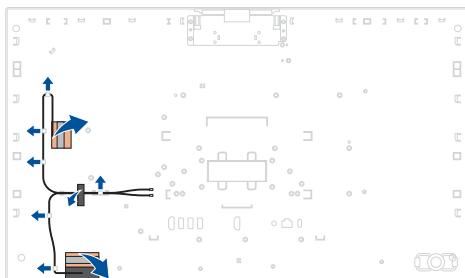


3. Remove the tape, then remove the WLAN antenna.

24" models



27" models

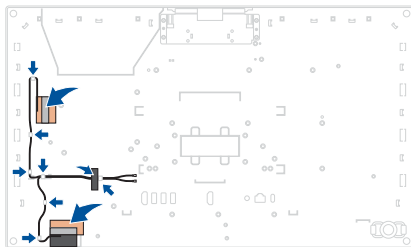


Installation

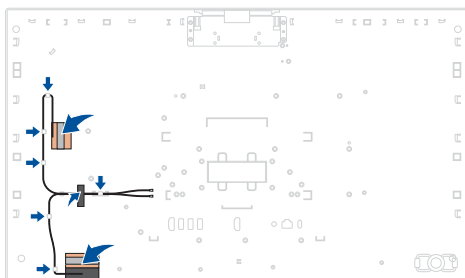
1. Install the WLAN antenna, then reattach the tape.
2. Route the cable through the cable guide(s).

IMPORTANT! Damage may occur if cables are not properly routed through the cable guides. Confirm that all cables are routed through each of the indicated cable guides before proceeding.

24" models

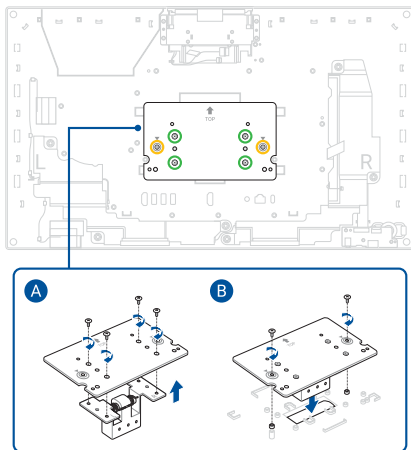


27" models

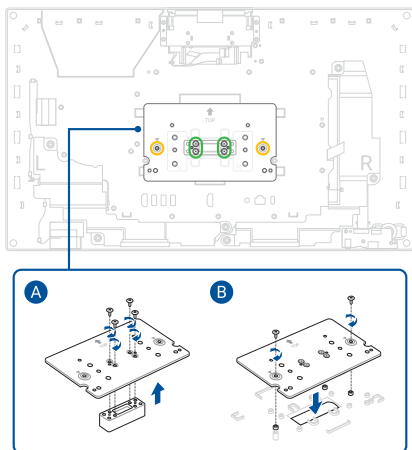


3. Install the stand mount, then secure the stand mount using the screw(s) you removed earlier.

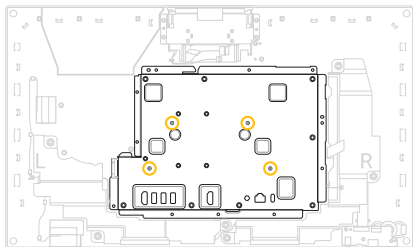
Fixed-height stand



Height-adjustable stand



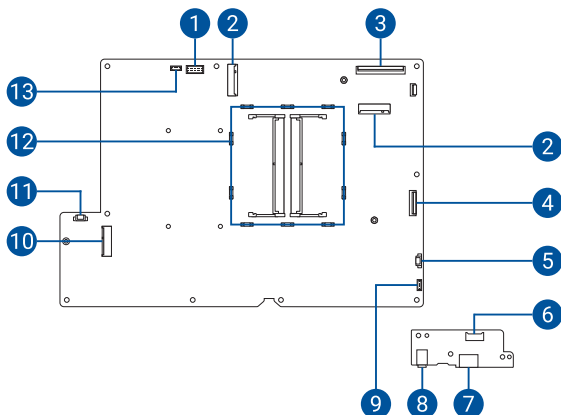
4. Install the motherboard bracket, then secure the motherboard bracket using the screw(s) you removed earlier.
5. Install the components you removed in the *Before you begin* section.



Appendix

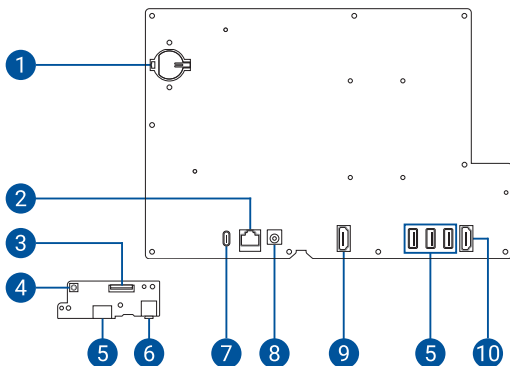
Wiring and connection diagrams

Top view



- | | |
|--------------------------------|--------------------------------|
| 1. Camera connector | 8. Audio connector |
| 2. M.2 SSD connector | 9. Touch screen connector |
| 3. eDP connector | 10. WLAN module connector |
| 4. I/O board connector | 11. Fan connector |
| 5. Speaker connector | 12. RAM module slot |
| 6. Display backlight connector | 13. Proximity sensor connector |
| 7. USB Type-A connector | |

Bottom view



- | | |
|-------------------------|-----------------------------|
| 1. Coin battery slot | 6. Audio connector |
| 2. LAN connector | 7. USB Type-C® connector |
| 3. I/O board connector | 8. Power supply connector |
| 4. Power button | 9. HDMI connector (input) |
| 5. USB Type-A connector | 10. HDMI connector (output) |

This image shows a single page of white paper with horizontal ruling lines. The lines are evenly spaced and run across the width of the page. There are no margins, text, or other markings on the paper.