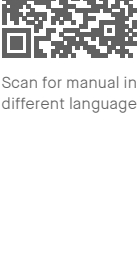
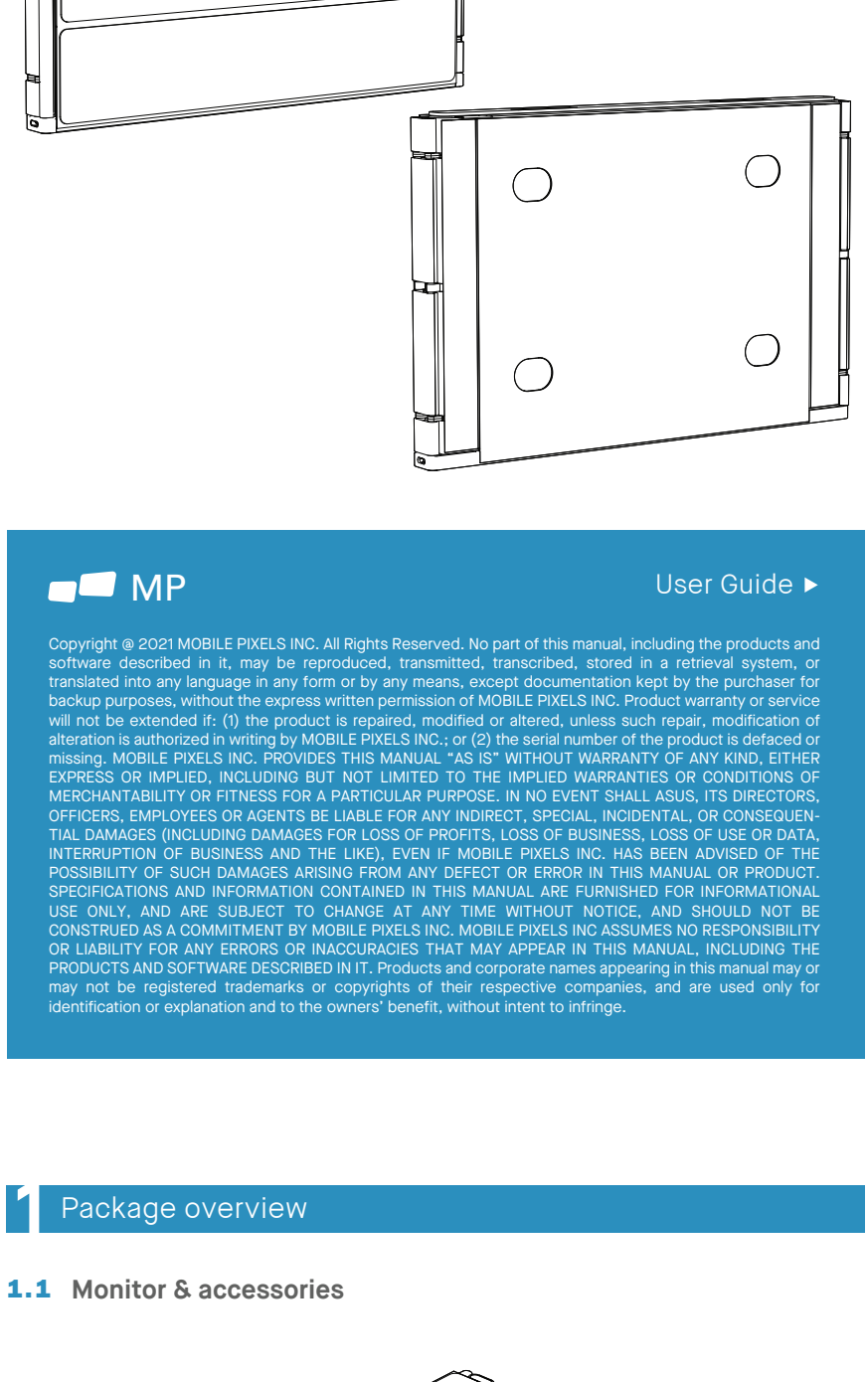


TRIO[®] 3 / TRIO[®] 3 Pro

Portable Laptop Monitor



Scan for manual in different language

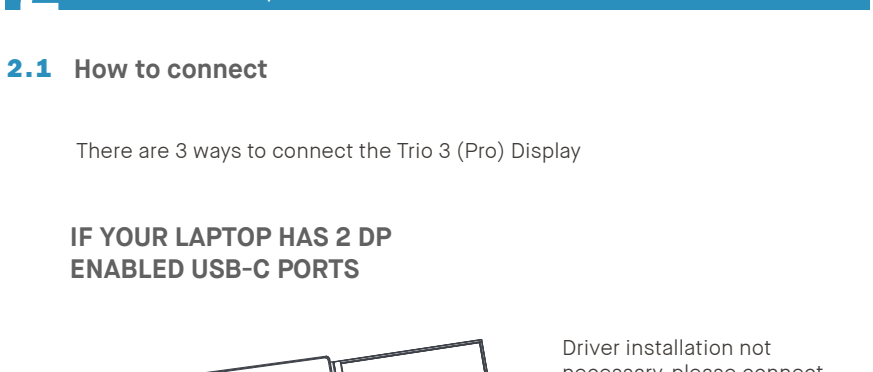


MP
User Guide ▶

Copyright © 2021 MOBILE PIXELS INC. All Rights Reserved. No part of this manual, including the products and software described in it, may be reproduced, transmitted, transcribed, stored in a retrieval system, or translated into any language in any form or by any means, except documentation kept by the purchaser for backup purposes, without the express written permission of MOBILE PIXELS INC. Product warranty or service will not be extended if: (1) the product is repaired, modified or altered, unless such repair, modification or alteration is authorized in writing by MOBILE PIXELS INC., or (2) the serial number of the product is defaced or missing. MOBILE PIXELS INC. PROVIDES THIS MANUAL "AS IS" WITHOUT WARRANTY OF ANY KIND, EITHER EXPRESS OR IMPLIED, INCLUDING BUT NOT LIMITED TO THE IMPLIED WARRANTIES OR CONDITIONS OF MERCHANTABILITY OR FITNESS FOR A PARTICULAR PURPOSE. IN NO EVENT SHALL MOBILE PIXELS INC., ITS DIRECTORS, OFFICERS, EMPLOYEES OR AGENTS BE LIABLE FOR ANY INDIRECT, SPECIAL, INCIDENTAL, OR CONSEQUENTIAL DAMAGES (INCLUDING DAMAGES FOR LOSS OF PROFITS, LOSS OF BUSINESS, LOSS OF USE OR DATA, INTERRUPTION OF BUSINESS AND THE LIKE), EVEN IF MOBILE PIXELS INC. HAS BEEN ADVISED OF THE POSSIBILITY OF SUCH DAMAGES ARISING FROM ANY DEFECT OR ERROR IN THIS MANUAL. OR PRODUCT SPECIFICATIONS AND INFORMATION CONTAINED IN THIS MANUAL ARE FURNISHED FOR INFORMATIONAL USE ONLY AND ARE SUBJECT TO CHANGE AT ANY TIME WITHOUT NOTICE, AND SHOULD NOT BE CONSTRUED AS A COMMITMENT BY MOBILE PIXELS INC. MOBILE PIXELS INC. ASSUMES NO RESPONSIBILITY OR LIABILITY FOR ANY ERRORS OR INACCURACIES THAT MAY APPEAR IN THIS MANUAL, INCLUDING THE PRODUCTS AND SOFTWARE DESCRIBED IN IT. Products and corporate names appearing in this manual may or may not be registered trademarks or registered service marks of their respective owners and are used only for identification or explanation and to the owners' benefit, without intent to infringe.

1 Package overview

1.1 Monitor & accessories



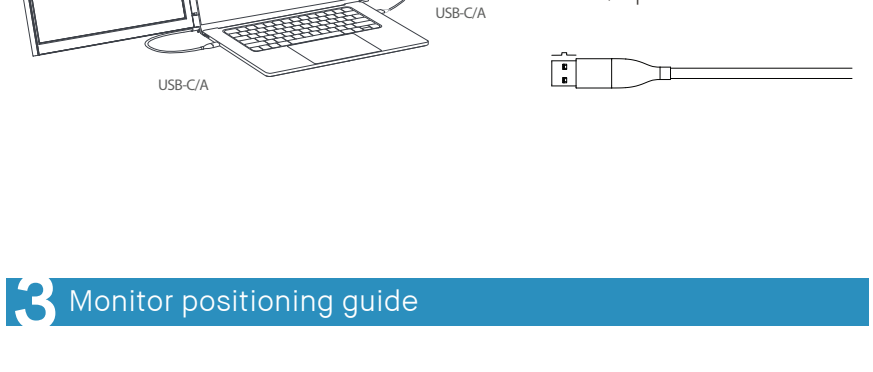
- ① Interchangeable usb Type-C ports
- ② Menu Buttons
- ③ Metallic Plates
- ④ Kickstand folio
- ⑤ 2x USB C-C Cable with Type A adapter
- ⑥ Magnetic Plates
- ⑦ Adhesive stickers

2 Connection Options

2.1 How to connect

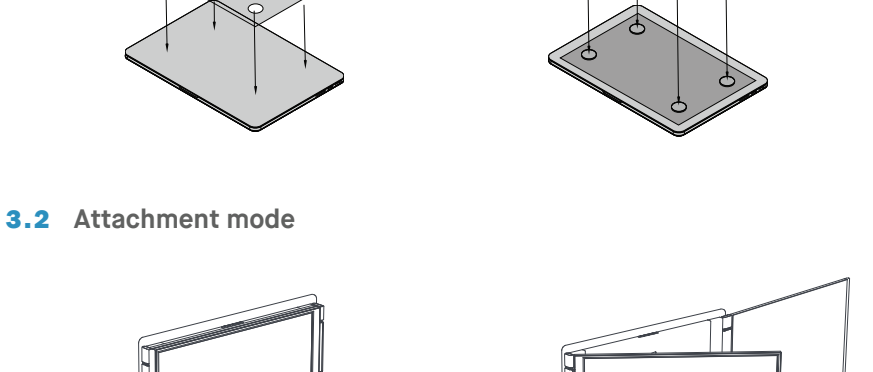
There are 3 ways to connect the Trio 3 (Pro) Display

IF YOUR LAPTOP HAS 2 DP ENABLED USB-C PORTS



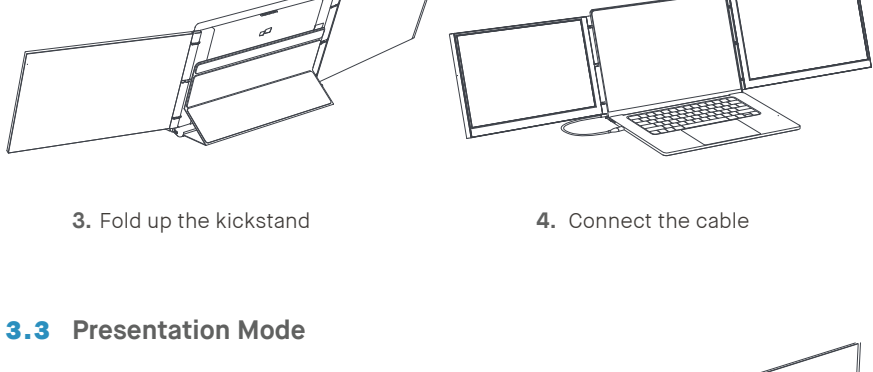
Driver installation not necessary, please connect each Trio screen to a USB C port using the USB C cable

IF YOUR LAPTOP HAS 1 DP ENABLED USB-C PORT



Driver installation is necessary, please refer to section 2. Connect 1 USB-C cable to USB C port from your laptop, and a 20W power supply to another USB /c port

IF YOUR LAPTOP DOES NOT HAVE A DP ENABLED USB-C PORT



Driver installation is necessary, please refer to section 2. Connect 1 USB-C cable to USB C port from your laptop, and a 20W power supply to another USB /c port

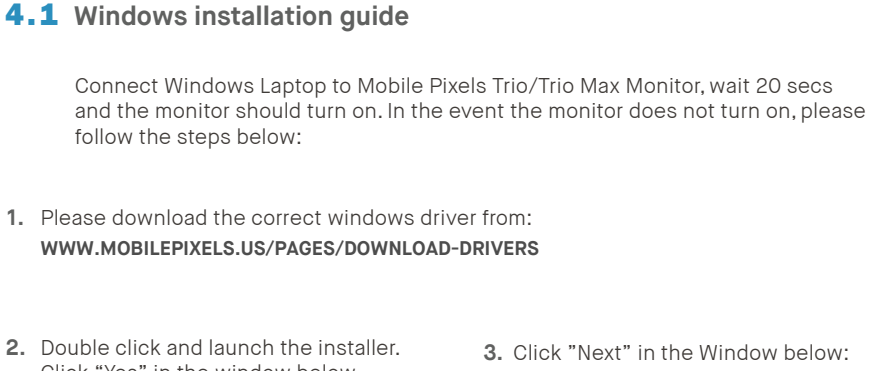
3 Monitor positioning guide

3.1 Attachment Guide

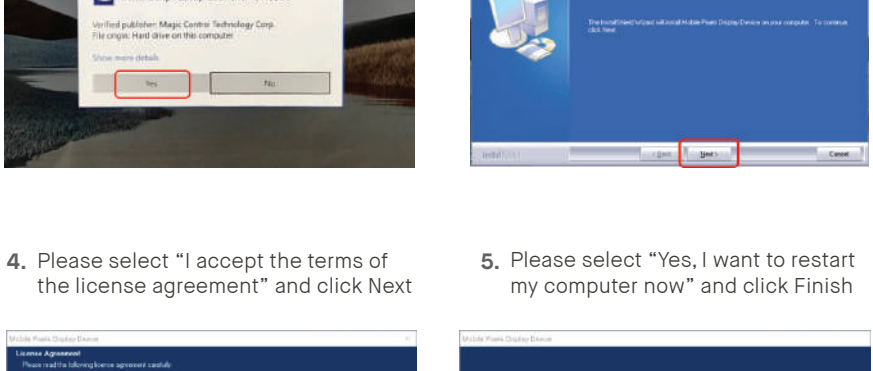
Clean laptop surface with included alcohol pad. Wait 10 secs for surface to dry.

Center and square the template on the back of your laptop.

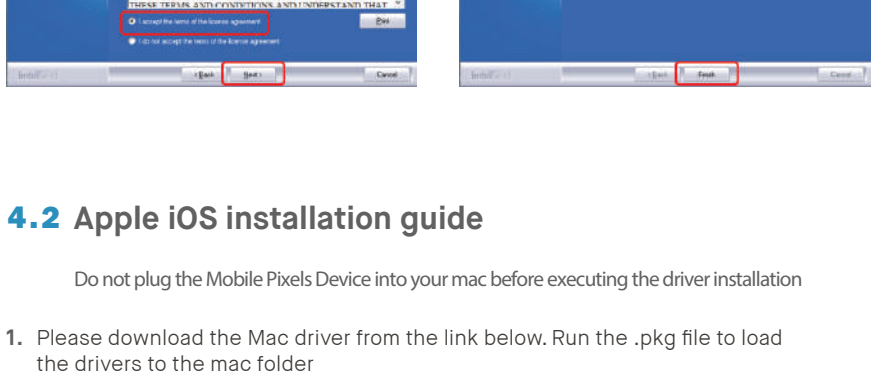
Place / and adhere magnet(s) into unfilled holes and press down to make sure it is firmly adhered, then remove template and mount your MP monitor



3.2 Attachment mode

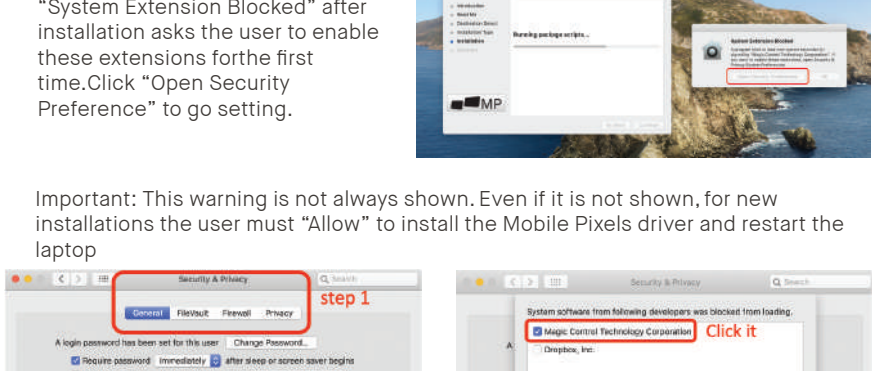


- Detach the kickstand folio
- Swivel the displays to the ideal viewing angle



- Open the kickstand folio
- Connect the type-c cable

3.3 Presentation Mode



- Open the kickstand folio
- To access Conference mode, swivel both screens to the back of the laptop. Connect the type-c cable

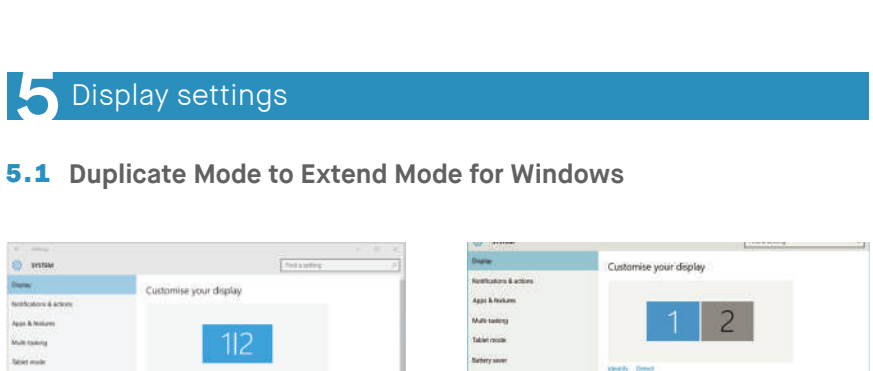
4 Driver installation guide

When using USB C to connect, driver installation is not necessary.

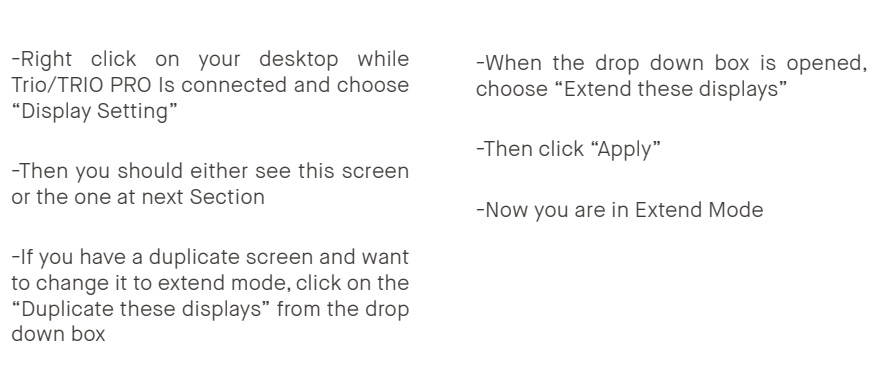
4.1 Windows installation guide

Connect Windows Laptop to Mobile Pixels Trio/Trio Max Monitor, wait 20 secs and the monitor should turn on. In the event the monitor does not turn on, please follow the steps below:

- Please download the correct windows driver from: WWW.MOBILEPIXELS.US/PAGES/DOWNLOAD-DRIVERS
- Double click and launch the installer. Click "Yes" in the window below:
- Click "Next" in the Window below:



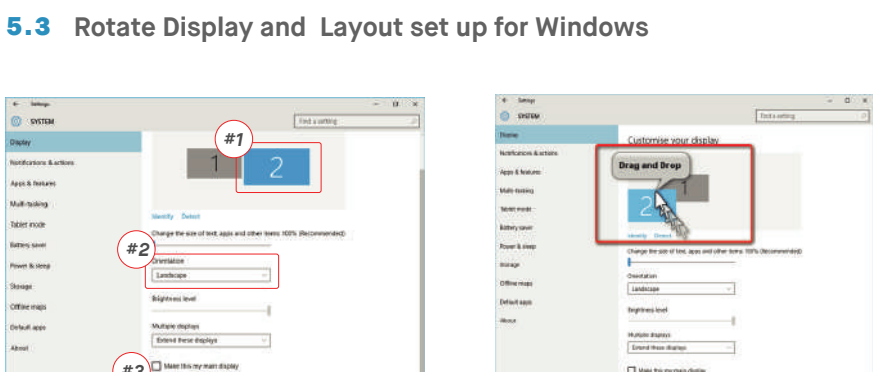
- Please select "I accept the terms of the license agreement" and click Next
- Please select "Yes, I want to restart my computer now" and click Finish



4.2 Apple iOS installation guide

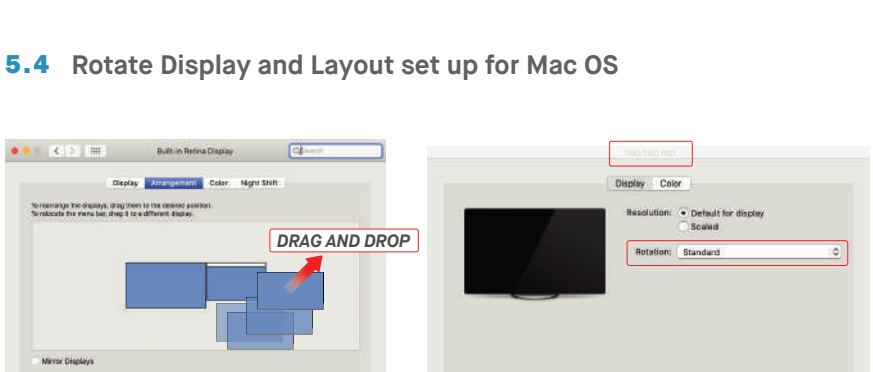
Do not plug the Mobile Pixels Device into your mac before executing the driver installation

- Please download the Mac driver from the link below. Run the .pkg file to load the drivers to the mac folder WWW.MOBILEPIXELS.US/PAGES/DOWNLOAD-DRIVERS
- Click "MP_Graphics_Driver_v1.0.0.pkg", please follow the instructions to install the device driver.

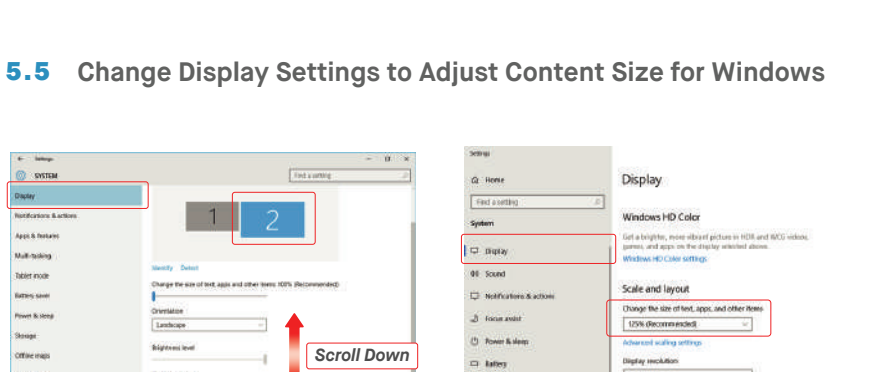


- The system should pop-up a screen "System Extension" after installation asks for the first time. Click "Open System Preference" to go setting.

Important: this warning is not always shown. Even if it is not shown, for new installations the user must "Allow" to install the Mobile Pixels driver and restart the computer

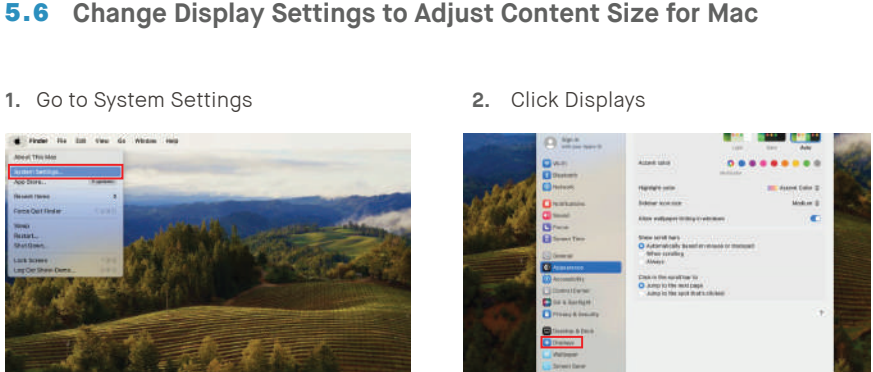


- Go to System Preferences > Security & Privacy > Privacy
- Click on the "Lock" to make changes
- Scroll and select "Virtual Recording" and check "DJVirtuallDisplayAgent"
- Click on the Lock to save changes Click "Quit Now" and restart the laptop.



5 Display settings

5.1 Duplicate Mode to Extend Mode for Windows



-Right click on your desktop while Trio/TRIO PRO is connected and choose "Display Setting"

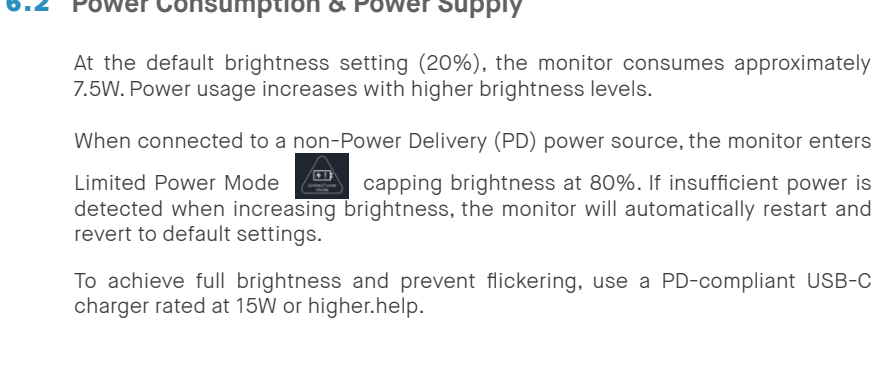
-When the drop down box is opened, choose "Extend these displays"

-Then click "Apply"

-Now you are in Extend Mode

-If you have a duplicate screen and want to change it to extend mode, click on the "Duplicate these displays" from the drop down box

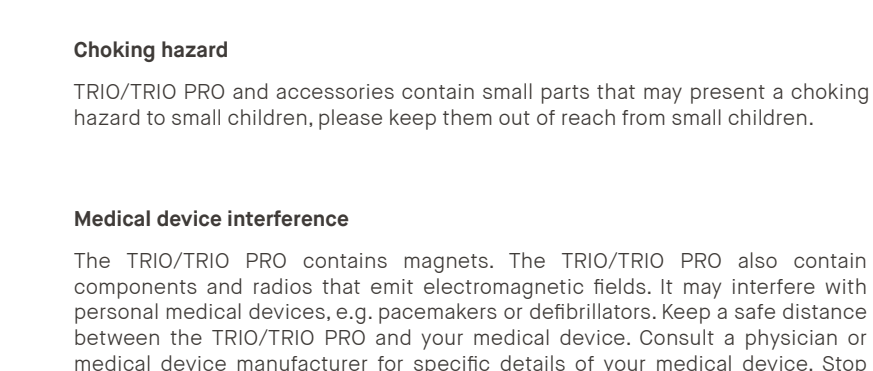
5.2 Duplicate Mode to Extend Mode for Mac OS



- Click on system preference and go to Displays

- Checking the "Mirror Displays" box will switch between duplicate and extend mode for Trio/TRIO PRO

5.3 Rotate Display and Layout set up for Windows



If you are already in "Extend mode" and want to use Trio/TRIO PRO on the left

-Now your screen is upside down and ready to be use on the left with 1 extra step.

-First click on the 2nd screen icon

-Move the 2nd display icon from the right to the left of the 1st display by simply "Drag and Drop" it.

-Click "Apply" to finish the setting of the layout.

5.4 Rotate Display and Layout set up for Mac OS



- To position the display on either left or right, simply drag and drop it to the side you want.

- To rotate the display, go to the TRIO/TRIO PRO and choose the suitable "Rotation" options.

5.5 Change Display Settings to Adjust Content Size for Windows

-To adjust content size on Trio/TRIO PRO monitor, first click on the number "2" monitor under Display setting.

-Scroll down and look for "scale and layout" options

-Default size of text is set at 125% and user can increase it up to 175% or reduce back to 100% base on user preference.

5.6 Change Display Settings to Adjust Content Size for Mac

- Go to System Settings
- Click Displays
- Click on TRIO 3/3 Pro
- Select your preferred resolution

6 Technical Information

Model	TRIO 3	TRIO 3 PRO
Screen Size	14 In	14 In
Weight	4.2 Lb	4.2 Lb
Resolution	1080p FHD	2.2K
Refresh Rate	60Hz	60Hz
Brightness	300N	300N
Power Consumption	<13W	<13W
Dimension	13.4" x 8.8" x 0.9"	13.4" x 8.8" x 0.9"
Compatible OS	Android, Mac, Windows	
Video Signal	USB-C DP/HDMI Alternate Mode; Display Driver	

*Specifications are subject to change without notice.

6.2 Power Consumption & Power Supply

At the default brightness setting (20%), the monitor consumes approximately 7.5W. Power usage increases with higher brightness levels.

When connected to a non-Power Delivery (PD) power source, the monitor enters Limited Power Mode (LPM) capping brightness at 80%. If insufficient power is detected when increasing brightness, the monitor will automatically restart and revert to default settings.

To achieve full brightness and prevent flickering, use a PD-compliant USB-C charger rated at 15W or higher.

6.3 Safety and Handling

Important safety information

Carefully go through the user manual and other documentation before setting up the TRIO/TRIO PRO. If any part is broken or damaged, do not try to open TRIO/TRIO PRO or attempt to fix it yourself, please contact the retailer, a qualified service technician or email us directly at contact@mobilepixels.us. Store TRIO/TRIO PRO under appropriate conditions, avoid exposure to extreme heat, moisture and dust. We recommend you to place TRIO/TRIO PRO on a stable surface and keep your TRIO/TRIO PRO in a sleeve to protect it during transport. Never spill liquid of any kind onto the surface or into the openings of the v. Do not spray any cleaner on the screen to avoid an electric shock. If your TRIO/TRIO PRO gets wet, unplug all cables and reconnect till the TRIO/TRIO PRO is completely dry. Carefully unplug all cables before cleaning TRIO/TRIO PRO. Clean with a soft, dry, lint-free cloth. To ensure satisfactory experience, use the TRIO/TRIO PRO with recommended display size of your laptop. Please disconnect the cables when you reverse the position of TRIO/TRIO PRO, decouple the TRIO/TRIO PRO from the backplane of your laptop, rotate 180° About a vector normal to the backplane, and re-couple to the backplane of the laptop computer.

Choking hazard

TRIO/TRIO PRO and accessories contain small parts that may present a choking hazard to small children, please keep them out of reach from small children.

Medical device interference

The TRIO/TRIO PRO contains magnets. The TRIO/TRIO PRO also contain components and radios that emit electromagnetic fields. It may interfere with personal medical devices, e.g. pacemakers or defibrillators. Keep a safe distance between the TRIO/TRIO PRO and your medical device. Consult a physician or medical device manufacturer for specific details of your medical device. Stop using TRIO/TRIO PRO if the interference is observed with your personal medical devices. Items with magnetically-stored data such as credit cards and hard drives may be sensitive to magnetic or electromagnetic fields, hence should be kept at a distance from TRIO/TRIO PRO.

FCC Compliance statement

This device complies with Part 15 of the FCC Rules. Operation is subject to the following two conditions: 1. This device may not cause harmful interference. 2. This device must accept any interference received including interference that may cause undesired operation. Note: This equipment has been tested and found to comply with the limits for a Class B digital device, pursuant to Part 15 of the FCC Rules. These limits are designed to provide reasonable protection against harmful interference in a residential installation. This equipment generates, uses, and can radiate radio frequency energy, and if not installed and used in accordance with the instructions, may cause harmful interference to radio communications. However, there is no guarantee that interference will not occur in a particular installation. If this equipment does cause harmful interference to radio or television reception, which can be determined by turning the equipment off and on, the user is encouraged to try to correct the interference by one or more of the following measures: 1. Reorient or relocate the receiving antenna. 2. Increase the separation between the equipment and receiver. 3. Connect the equipment into an outlet on a circuit different from that to which the receiver is connected. 4. Consult the dealer or an experienced radio/TV technician for help.

Warranty

Mobile Pixels INC warrants this product for a period of 1 year upon the original date of purchase. Product or service warranty will not be extended to any losses or damages that are due to improper installation, misuse, neglect, modification, alteration by non-authorized third party, improper environment, or other irregularities.

Support

For detailed troubleshooting information, contact: contact@mobilepixels.us