

BLUEY



Instruction Manual

ICE CREAM ADVENTURE PLAYSET



BBC
STUDIOS

BLUEY (word mark and character logos) are trade marks of Ludo Studio Pty Limited and are used under licence. BLUEY logo © Ludo Studio Pty Limited 2018. Licensed by BBC Studios. BBC is a trade mark of the British Broadcasting Corporation and is used under licence. BBC logo © BBC 1996

INTRODUCTION

Thank you for purchasing the **VTech® Bluey Ice Cream Adventure Playset**.

The Bluey Ice Cream Adventure Playset includes fun activities that encourage hands-on and visual play. Push the handle to load a big ice cream into the back of Bluey's ice cream truck. Let's get ready to deliver some delicious treats to Bluey's friends!



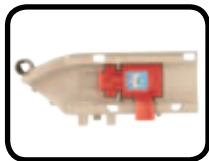
INCLUDED IN THIS PACKAGE



One **SmartPoint**[®]
Bluey Ice Cream Truck



Two Ice Cream Cones



One Launcher Track



One Short Curved Track



Two Pillars



One Ice Cream Shop
(Ice Cream Refill Point)



One Green Ice Cream
Shop Wall



One Gift Shop



One Green Scenery



One Pink
Walkway Arbour



One Blue Stone Wall



One Pink Tree



One Rectangular Track



One Road Sign



One Road Gate



One Door



One Hanging Piece



One Long Slide Track



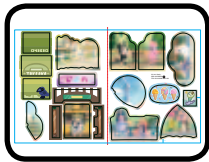
One Yellow Short Track



One Pair Of Green
Palm Trees



One Palm Leaf



Sticker Sheet

- One Quick Start Guide

WARNING:

All packing materials such as tape, plastic sheets, packaging locks, removable tags, cable ties, cords and packaging screws are not part of this toy, and should be discarded for your child's safety.

NOTE:

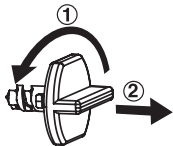
Please save this Instruction Manual as it contains important information.

ATTENTION :

Pour la sécurité de votre enfant, débarrassez-vous de tous les produits d'emballage tels que rubans adhésifs, feuilles de plastique, attaches, étiquettes, cordons et vis d'emballage. Ils ne font pas partie du jouet.

NOTE :

Il est conseillé de sauvegarder ce manuel d'utilisation car il comporte des informations importantes.

Unlock the Packaging Locks

- ① Turn the packaging locks counterclockwise several times.
- ② Pull out and discard the packaging locks.

GETTING STARTED



WARNING:

Adult assembly required for battery installation.
Keep batteries out of reach of children.

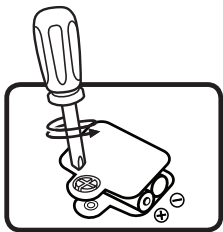


ATTENTION :

Les piles ou accumulateurs doivent être installés par un adulte.
Tenir les piles ou accumulateurs hors de portée des enfants.

Battery Removal and Installation

1. Make sure the unit is turned Off.
2. Find the battery cover located on the bottom of the unit. Use a screwdriver to loosen the screw and then open the battery cover.
3. Remove old batteries by pulling up on one end of each battery.
4. Install 2 new 1.5V AAA (AM-4/LR03) batteries following the diagram inside the battery box (for best performance, alkaline batteries or fully charged Ni-MH rechargeable batteries are recommended).
5. Replace the battery cover and tighten the screw to secure.



Note:

If the unit repeatedly powers down while playing or the light fades out, we suggest changing the batteries.

IMPORTANT: BATTERY INFORMATION

- Insert batteries with the correct polarity (+ and -).
- Do not mix old and new batteries.
- Do not mix alkaline, standard (carbon-zinc) or rechargeable batteries.
- Only batteries of the same or equivalent type as recommended are to be used.
- Do not short-circuit the supply terminals.
- Remove batteries during long periods of non-use.
- Remove exhausted batteries from the toy.
- Dispose of batteries safely. Do not dispose of batteries in fire.

RECHARGEABLE BATTERIES:

- Rechargeable batteries are only to be charged under adult supervision.
- Do not charge non-rechargeable batteries.

IMPORTANT : INFORMATIONS CONCERNANT LES PILES

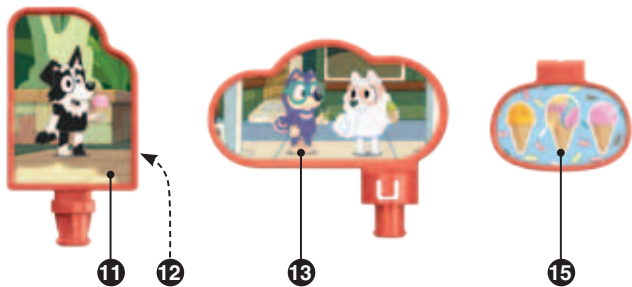
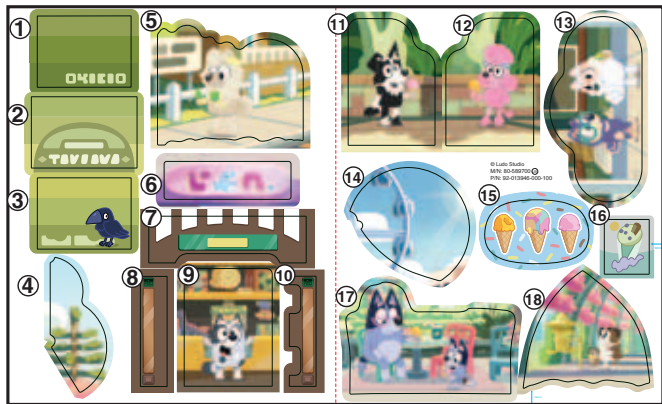
- Mettre en place les piles ou les accumulateurs en respectant les polarités + et -.
- Ne pas mélanger des piles ou des accumulateurs neufs avec des usagés.
- Ne pas mélanger différents types de piles : alcalines, zinc-carbone et rechargeables.
- Seules des piles du type recommandé doivent être utilisées.
- Ne pas mettre les bornes d'une pile ou d'un accumulateur en court-circuit (en reliant directement le + et le -).
- Retirer les piles ou les accumulateurs en cas de non-utilisation prolongée.
- Enlever les piles ou les accumulateurs usagés du jouet.
- Ne les jeter ni au feu ni dans la nature.

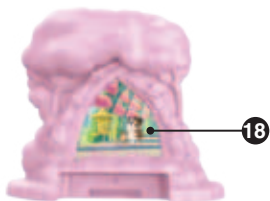
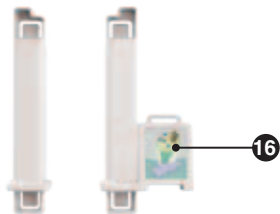
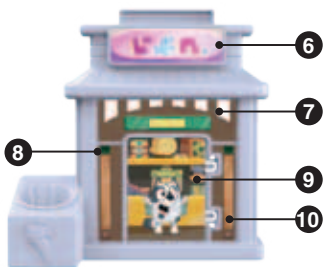
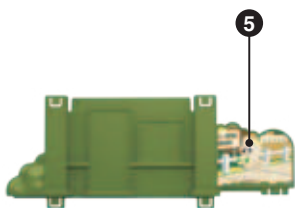
PILES RECHARGEABLES :

- Les accumulateurs ne doivent être chargés que sous la surveillance d'un adulte.
- Ne pas tenter de recharger des piles non rechargeables.

LABEL APPLICATION

Please securely stick the labels to the playset as indicated below:

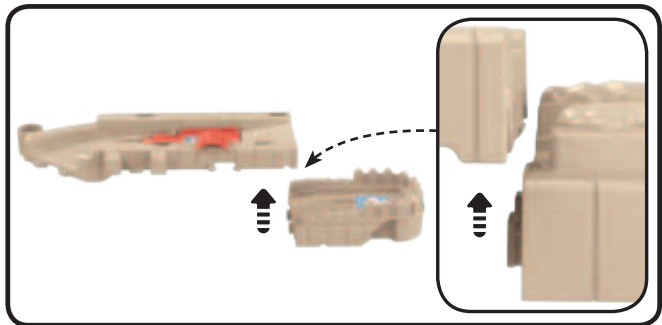




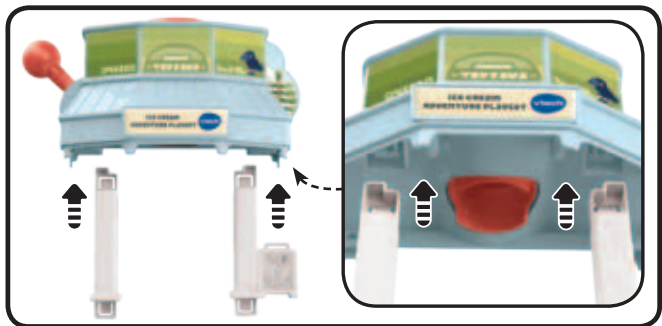
INSTRUCTIONS

With the **Bluey Ice Cream Adventure Playset**, safety comes first. To ensure your child's safety, adult assembly is required.

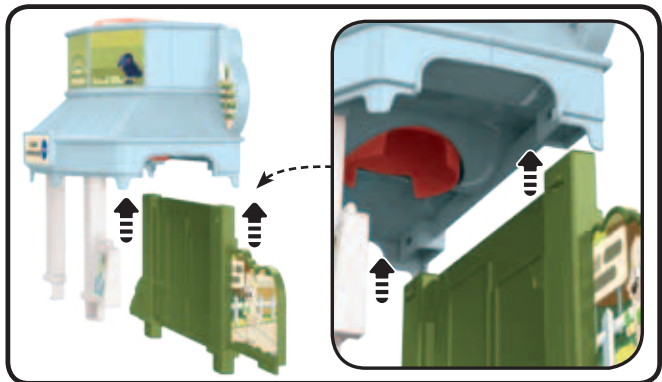
1. Connect the **Launcher Track** and the **Short Curved Track** together.



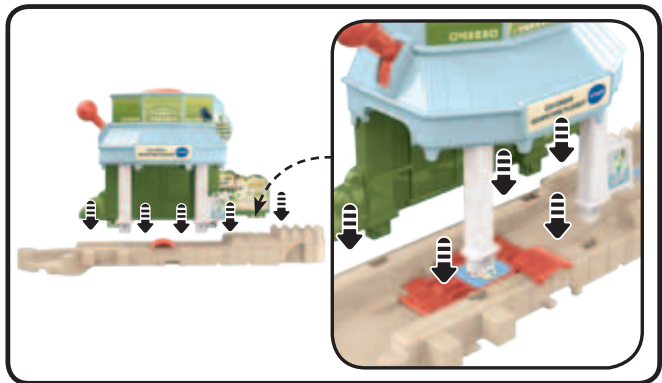
2. Insert the **Two Pillars** under the **Ice Cream Shop (Ice Cream Refill Point)**.



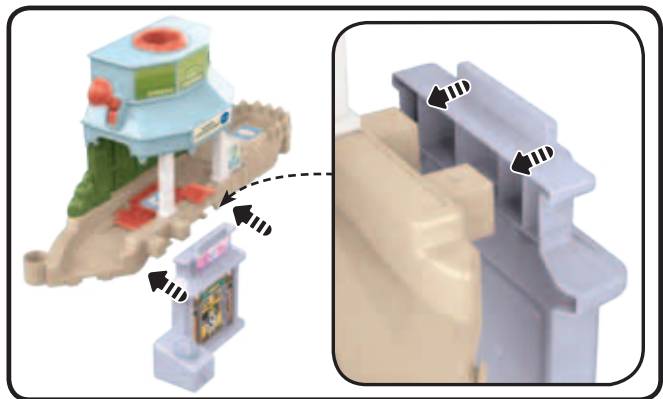
3. Insert the **Green Ice Cream Shop Wall** under the **Ice Cream Shop (Ice Cream Refill Point)**.



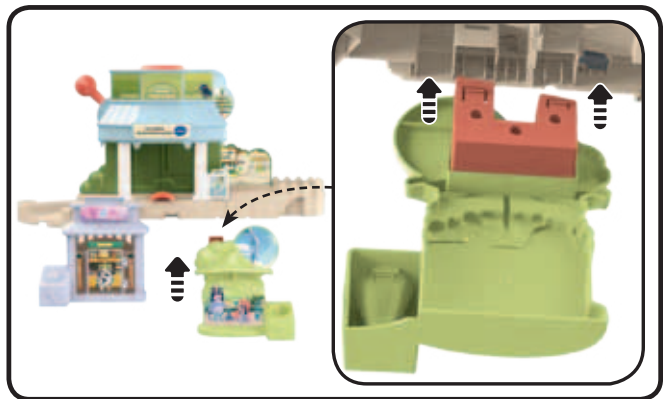
4. Assemble the **Parts Of The Ice Cream Shop (Ice Cream Refill Point)** onto the **Connected Track**.



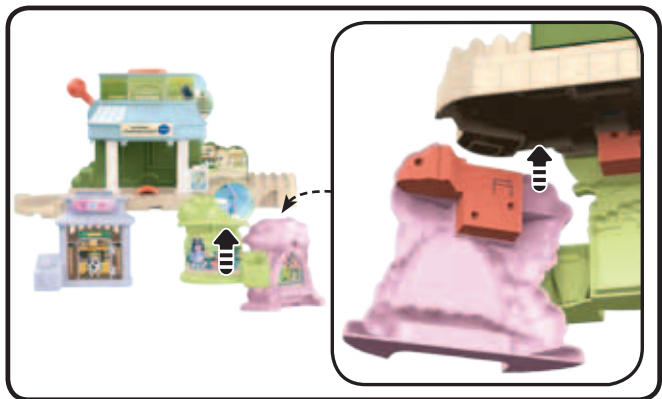
5. Insert the **Gift Shop** onto the front side of the **Connected Track**.



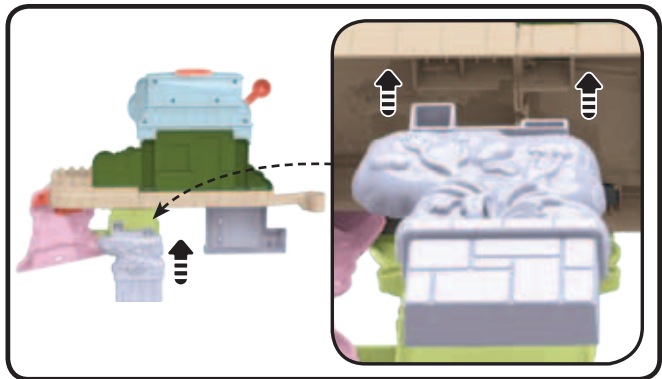
6. Insert the **Green Scenery** under the **Connected Track**.



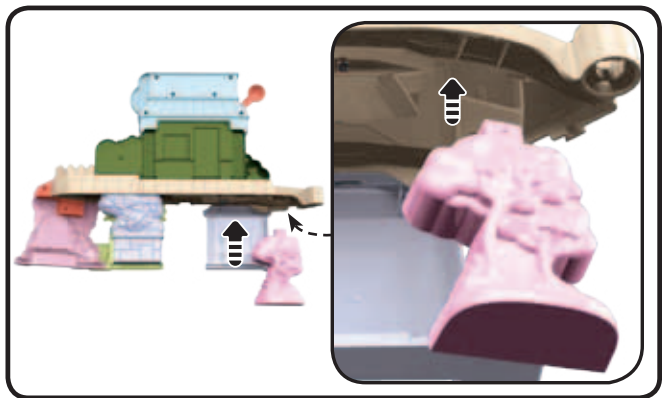
7. Insert the **Pink Walkway Arbour** under the **Connected Track**.



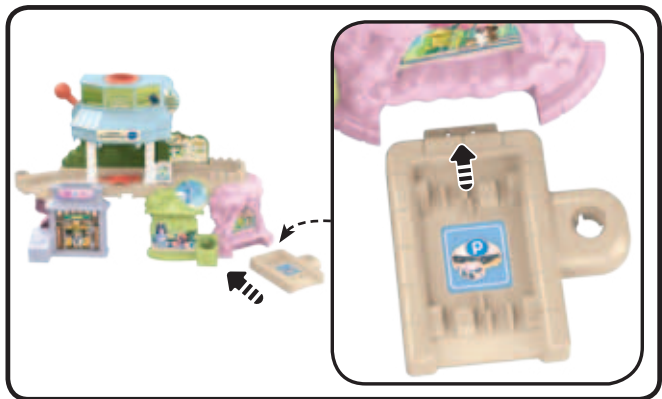
8. Insert the **Blue Stone Wall** onto the other side of the **Connected Track**.



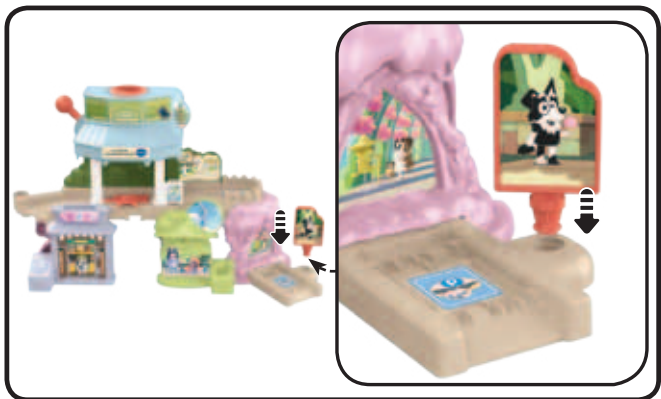
9. Insert the **Pink Tree** onto the other side of the **Connected Track**.



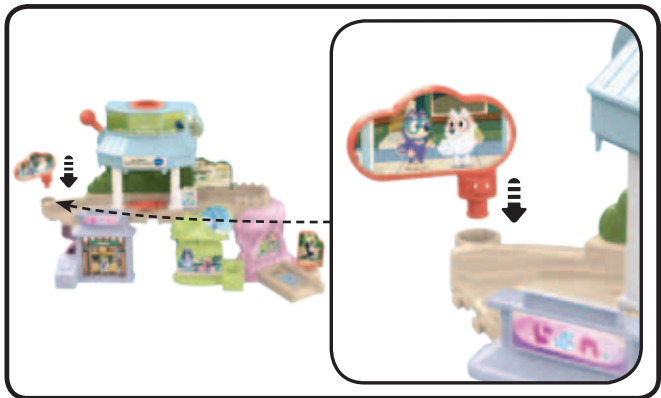
10. Assemble the **Rectangular Track** onto the **Pink Walkway Armour**.



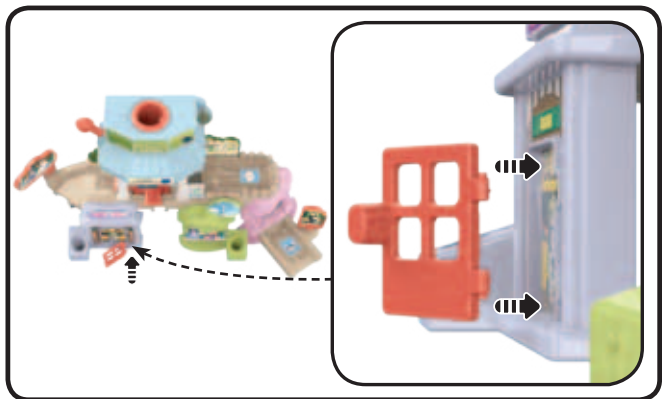
11. Insert the **Road Sign** into the **Rectangular Track**.



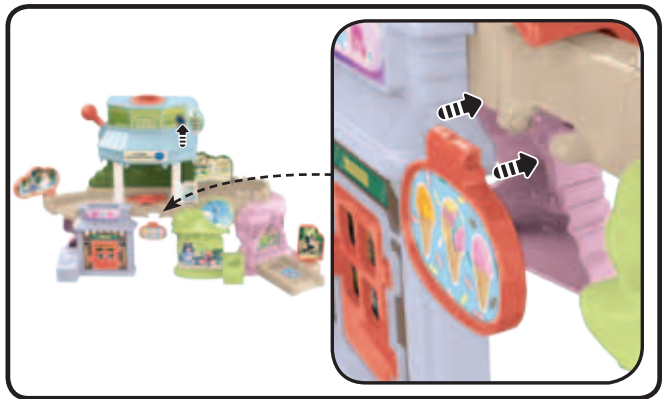
12. Insert the **Road Gate** into the **Launcher Track**.



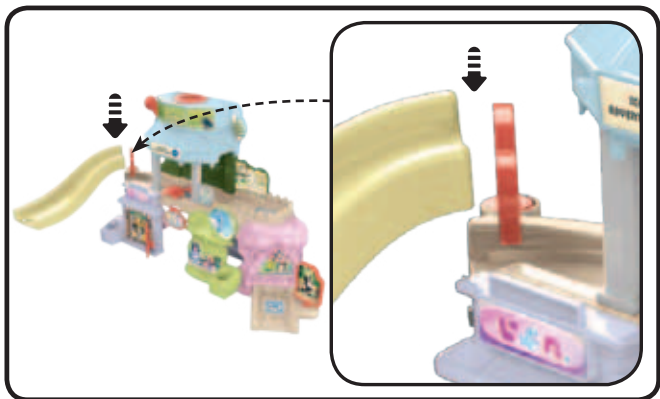
13. Insert the **Door** into the **Gift Shop**.



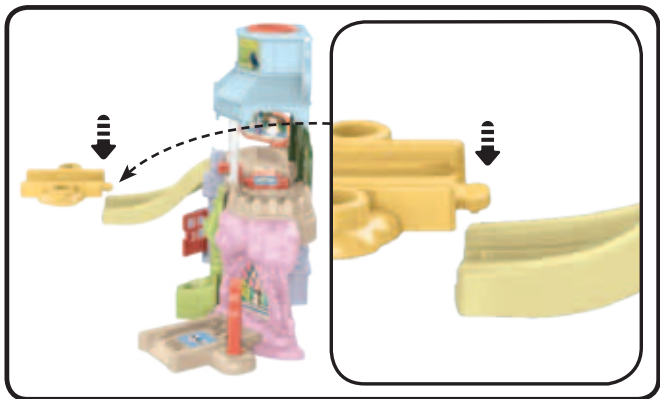
14. Insert the **Hanging Piece** into the one side of the **Launcher Track**.



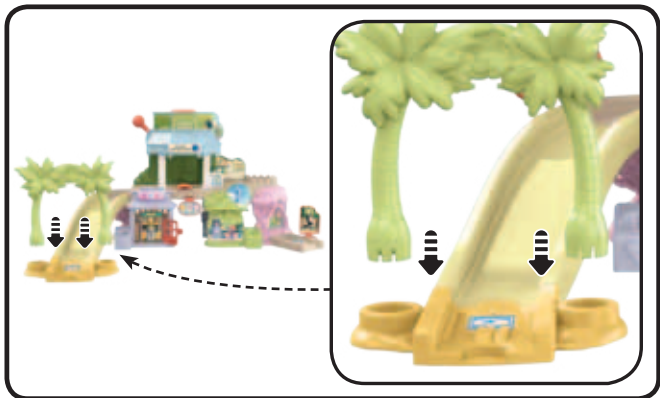
15. Insert the **Long Slide Track** into the **Launcher Track**.



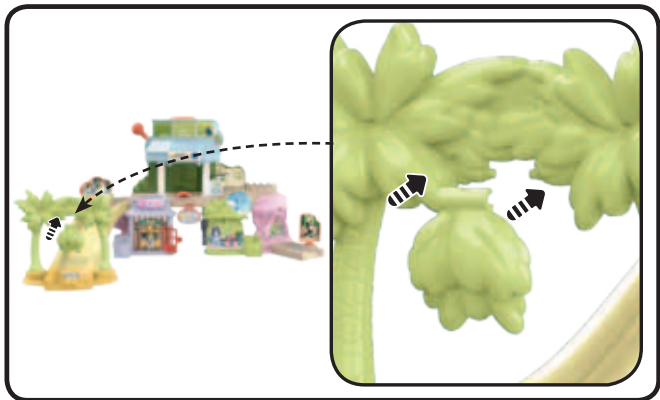
16. Insert the **Yellow Short Track** into the **Long Slide Track**.



17. Insert the **Pair Of Green Palm Trees** into the **Yellow Short Track**.



18. Insert the **Palm Leaf** among the **Pair Of Green Palm Trees**.



Once you've completed the above steps, you are ready to play! You can connect these pieces to other tracks (each sold separately).

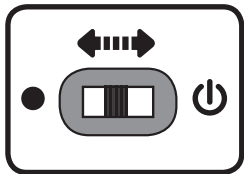


PRODUCT FEATURES

Bluey Ice Cream Truck

1. On/Off Switch

To turn the unit On, slide the **On/Off Switch** to the **On** ☺ position. To turn the unit Off, slide the **On/Off Switch** to the **Off** ● position.



2. Automatic Shut-Off

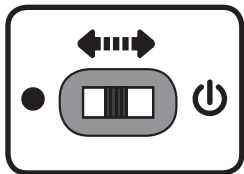
To preserve battery life, the **Bluey Ice Cream Truck** will automatically power down after approximately 60 seconds without input. The unit can be turned On again by pressing the Bluey Character Button, pushing the **Bluey Ice Cream Truck** quickly or triggering a **SmartPoint®** location.

NOTE: This vehicle is in Try-Me mode in the packaging. To turn off Try-Me mode, open the package then turn the **Bluey Ice Cream Truck** Off and On again to proceed with normal play. If the unit repeatedly powers down while playing, we suggest changing the batteries.

MODES

Bluey Ice Cream Truck

1. Slide the **On/Off Switch** to the On position. You will hear music, fun phrases and sounds. The lights will flash with the sounds.



2. Press the **Bluey Character Button** to hear fun sounds, music and phrases. The lights will flash with the sounds.



3. Push the **Bluey Ice Cream Truck** quickly to hear fun sounds. While a melody is playing, continue pushing the **Bluey Ice Cream Truck** to add fun sounds on top of the melody. The lights will flash with sounds.



4. For added fun, the **Bluey Ice Cream Truck** interacts with the **Bluey Ice Cream Adventure Playset**. Simply put the **Bluey Ice Cream Truck** on one of the playset's four **SmartPoint**[®] locations to see the **Bluey Ice Cream Truck's** lights flash and hear fun sounds, short tunes and phrases. The **Bluey Ice Cream Truck** even interacts with other tracks (each sold separately).



MODES

Ice Cream Adventure Playset

1. Place the **Bluey Ice Cream Truck** or any **SmartPoint®** vehicle (each sold separately) on any of the playset's four **SmartPoint®** locations to trigger fun sounds, music or phrases.



2. Put the **Ice Cream Cones** in the hole on the **Ice Cream Shop (Ice Cream Refill Point)**. Then put the **Bluey Ice Cream Truck** on the **SmartPoint® Launcher Track**, and then pull the handle to let the ice cream cone fall into the **Bluey Ice Cream Truck**.



3. Put the **Bluey Ice Cream Truck** on the **SmartPoint® Launcher**, then raise the launcher to let the **Bluey Ice Cream Truck** slide down along the track.



4. Move the **Road Gate** side to side to stop or let the **Bluey Ice Cream Truck** pass through.



MELODY LIST

1. Duck Cake
2. Favourite Thing
3. Baby Race
4. Ice Cream 1
5. Ragdoll
6. Ice Cream 2

SONGS

Song 1

Lay an egg
Lay an egg,
Lay a chickenrat egg
For our breakfast,
For our breakfast.
Make a chickenrat egg
For our breakfast!

Song 2

Two little men in a flying saucer
Flew around the world one day,
They looked left and right
But they didn't like the sight,
And then they flew away

CARE & MAINTENANCE

1. Keep the unit clean by wiping it with a slightly damp cloth.
2. Keep the unit out of direct sunlight and away from any direct heat sources.
3. Remove the batteries if the unit will not be in use for an extended period of time.
4. Do not drop the unit on hard surfaces and do not expose the unit to moisture or water.

TROUBLESHOOTING

If for some reason the unit stops working or malfunctions, please follow these steps:

1. Turn the unit Off.
2. Interrupt the power supply by removing the batteries.
3. Let the unit stand for a few minutes, then replace the batteries.
4. Turn the unit On. The unit should now be ready to use again.
5. If the unit still does not work, install a new set of batteries.

IMPORTANT NOTE:

If the problem persists, please contact our **Consumer Services Department** at **1-800-521-2010** in the U.S. or **1-877-352-8697** in Canada, or by going to our website at **vtechkids.com** and filling out our **Contact Us** form located under the **Customer Support** link. Creating and developing **VTech®** products is accompanied by a responsibility that we take very seriously. We make every effort to ensure the accuracy of the information, which forms the value of our products. However, errors sometimes can occur. It is important for you to know that we stand behind our products and encourage you to contact us with any problems and/or suggestions you might have. A service representative will be happy to help you.

NOTE

This equipment has been tested and found to comply with the limits for a Class B digital device, pursuant to Part 15 of the FCC Rules. These limits are designed to provide reasonable protection against harmful interference in a residential installation. This equipment generates, uses and can radiate radio frequency energy and, if not installed and used in accordance with the instructions, may cause harmful interference to radio communications. However, there is no guarantee that interference will not occur in a particular installation. If this equipment does cause harmful interference to radio or television reception, which can be determined by turning the equipment off and on, the user is encouraged to try to correct the interference by one or more of the following measures:

- Reorient or relocate the receiving antenna.
- Increase the separation between the equipment and receiver.
- Connect the equipment into an outlet on a circuit different from that to which the receiver is connected.
- Consult the dealer or an experienced radio/TV technician for help.

Caution: Changes or modifications not expressly approved by the party responsible for compliance could void the user's authority to operate the equipment.

Supplier's Declaration of Conformity

47 CFR § 2.1077 Compliance Information

Trade Name: VTech®
Model: 5897
Product Name: Bluey Ice Cream Adventure Playset
Responsible Party: VTech Electronics North America, L.L.C.
Address: 1156 W. Shure Drive, Suite 200
Arlington Heights, IL 60004
Website: vtechkids.com

THIS DEVICE COMPLIES WITH PART 15 OF THE FCC RULES. OPERATION IS SUBJECT TO THE FOLLOWING TWO CONDITIONS: (1) THIS DEVICE MAY NOT CAUSE HARMFUL INTERFERENCE, AND (2) THIS DEVICE MUST ACCEPT ANY INTERFERENCE RECEIVED, INCLUDING INTERFERENCE THAT MAY CAUSE UNDESIRE OPERATION.
CAN ICES(B)/NMB(B)

CONSUMER SERVICES

Creating and developing **VTech®** products is accompanied by a responsibility that we at **VTech®** take very seriously. We make every effort to ensure the accuracy of the information, which forms the value of our products. However, errors sometimes can occur. It is important for you to know that we stand behind our products and encourage you to call our Consumer Services Department with any problems and/or suggestions that you might have. A service representative will be happy to help you.

Australian Customers:

Phone: 1800 862 155

Website: support.vtech.com.au

NZ Customers:

Phone: 0800 400 785

Website: support.vtech.com.au

PRODUCT WARRANTY/ CONSUMER GUARANTEES

Australian Customers:

VTECH ELECTRONICS (AUSTRALIA) PTY LIMITED – CONSUMER GUARANTEES

Under the Australian Consumer Law, a number of consumer guarantees apply to goods and services supplied by VTech Electronics (Australia) Pty Limited. Please refer to vtech.com.au/consumerguarantees for further information.

**Visit our website for more
information about our products,
downloads, resources and more.**

vtechkids.com

vtechkids.ca

Read our complete warranty policy online at
vtechkids.com/warranty
vtechkids.ca/warranty

