



529 Oceanside

	US Units	Metric Units
<b>Style Number</b>	<b>SA496</b>	
<b>Construction</b>	Engineered	
<b>Species</b>	Maple	
<b>Nominal Overall Thickness</b>	3/8"	8.2 mm
<b>Nominal Width</b>	5"	127 mm
<b>Finish</b>	Repel - Water Resist	
<b>Gloss Level</b>	40%	
<b>Surface Texture</b>	Scraped	
<b>Edge Description</b>	Pillowed	
<b>End Description</b>	PI	
<b>Profile</b>	Tongue And Groove	
<b>Weight per Carton</b>	35.5 lbs	16.1 kg
<b>SQFT per Carton</b>	23.66 sq ft	2.19 sq m
<b>SQFT per Pallet</b>	1419.6 sq ft	131.88 sq m
<b>Installation Methods</b>	Nail, Staple, Glue, Floating	
<b>Installation Grade</b>	Above, On, Below	
<b>Variation</b>	Moderate	
<b>GREENGUARD® Certified</b>	Yes	
<b>Cradle-to-Cradle Certified</b>	Yes	
<b>Radiant Heat Approved</b>	Yes	
<b>Residential Warranty</b>	Splash-Proof Lifetime	
<b>Commercial Warranty</b>	5 Years	
All measurements are nominal.	Cartons may include random lengths.	

## Features

Subtle scraped maple flooring in bold, rich colors. Also available in a smooth surface version, Clearwater.

## Suggested Adhesive

Style Name	Style Number
35MC	HS105
Urebond Plus	SWADH

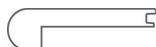
**Trim Pieces** length: 78" (\*Overlap Reducer and Overlap Stairnose are designed for floating installations only. These items are non-stocking - but are available through a quick-ship program. Delivery should take approximately 2 to 3 weeks.)

**SRH38**

Flush Reducer

**SORH8**

\*Overlap Reducer

**SSH38**

Flush Stairnose

**SOSH8**

\*Overlap Stairnose

**SCH38**Threshold / Carpet  
Reducer**TMH78**

T-Molding

**QTR96**

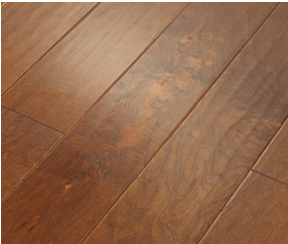
Quarter Round

Trim images are for illustration purposes only. Actual dimensions will vary.  
 Contact the Shaw Information Center for additional details: 800-441-7429.

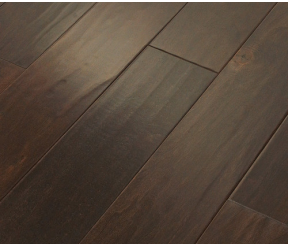


MADE IN THE USA

Colors



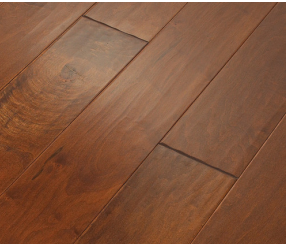
460 Surfside



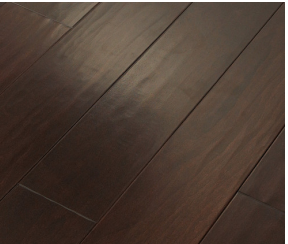
493 Bayfront



529 Oceanside



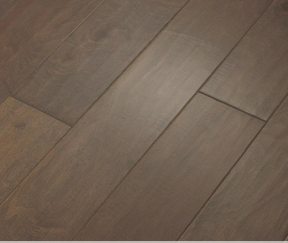
627 Burnside



698 Conway



1023 Crescent Beach



5034 Windsurf