

JennAir® RISE™ 27" Double Wall Oven with MultiMode®

JJW2827LL



Features

MultiMode® Convection System

Steady heat is circulated by whirling metal blades, weaving around every flat tine. Wield your cooking prowess from marbled meats to succulent roasts.

4.3-Inch Full Color LCD Display

A highly interactive, full-color LCD touchscreen is packed with dynamic features that allow you to navigate effortlessly through settings and cooking options including temperature and cooking mode.

Glide Rack

Smooth moves. Glides in and out fluidly and quietly, even when fully loaded.

Temperature Probe

Know when dinner is done without ever opening the door. Four points of contact deliver temperature readings visible on the LCD screen.

No Preheat Baking

Bake on a single rack without the wait using No Preheat Baking.

My Creations

Curate recipe presets at will. Bake for 30 minutes, broil for four and keep dishes warm until you're ready to dine-all without getting up to reset the oven for each stage.

Jet Black Oven Interior

Behind the dark glass door, ramp-up cinematic lighting illuminates resilient racks and an enticing jet black interior.

Accessories

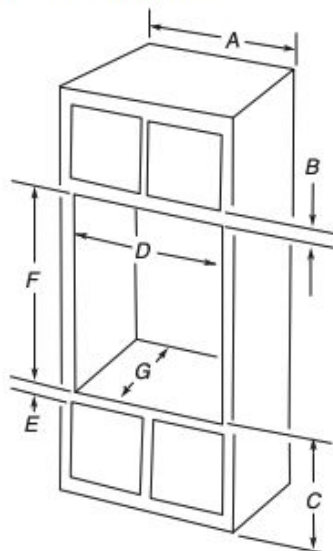
W10123240	Premium Broiler Pan and Roasting Rack
W11256306	Range Oven Rack
W11242909	Flat Oven Rack
W11369893	Built-in Oven Bottom Vent Trim Kit



Product Details

Dimensions	27" W x 53" H x 27 3/16"D
Cutout Dimensions <i>Flush Inset Install</i>	27 1/4" W x 53 3/16" H x 25" D
Capacity	8.6 Cu Ft
Convection	True Convection
Glide Racks	1
ADA Compliant	Yes
Energy Rating	362 kWh

Standard Cutout



27" (68.6 cm) models

- A. 27" (68.6 cm) minimum cabinet width
- B. $2\frac{3}{16}$ " (5.5 cm) top of cutout to bottom of upper cabinet door
- C. $14\frac{3}{4}$ " (37.5 cm) bottom of cutout to floor is recommended.
- D. $4\text{''}-14\frac{3}{4}\text{''}$ (10.2 cm - 37.5 cm) bottom of cutout to floor is acceptable.
- E. $25\frac{1}{2}$ " (64.8 cm) minimum cutout width
- F. $1\frac{1}{2}$ " (3.8 cm) minimum bottom of cutout to top of cabinet door
- G. $50\frac{1}{4}$ " (127.6 cm)* recommended cutout height
- H. 24" (60.7 cm) cutout depth

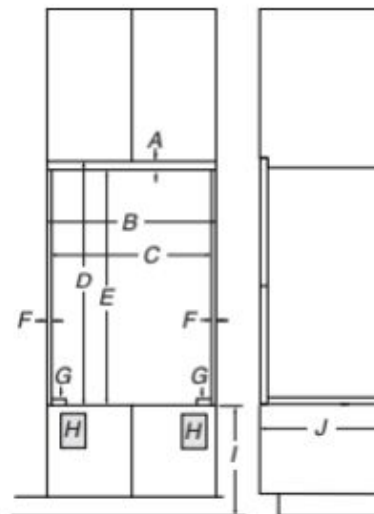
30" (76.2 cm) models

- A. 30" (76.2 cm) minimum cabinet width
- B. $2\frac{3}{16}$ " (5.5 cm) top of cutout to bottom of upper cabinet door
- C. $14\frac{3}{4}$ " (37.5 cm) bottom of cutout to floor is recommended.
- D. $4\text{''}-14\frac{3}{4}\text{''}$ (10.2 cm - 37.5 cm) bottom of cutout to floor is acceptable.
- E. $28\frac{1}{2}$ " (72.4 cm) minimum cutout width
- F. $1\frac{1}{2}$ " (3.8 cm) minimum bottom of cutout to top of cabinet door
- G. $50\frac{1}{4}$ " (127.6 cm)* recommended cutout height
- H. 24" (60.7 cm) cutout depth

***NOTE:** The cutout height can be between 50" and $52\frac{3}{16}$ " (127 cm and 132.6 cm) for double ovens.

NOTE: Contact service to get tall bottom vent shield for cutouts taller than $50\frac{3}{8}$ " (128 cm) to enhance installation.

Flush Inset Cutout



27" (76.2 cm) Models

- A. $\frac{3}{4}$ " (1.9 cm) top cleat*
- B. $27\frac{1}{4}$ " (69.2 cm) minimum width of flush inset cutout
- C. $25\frac{7}{8}$ " (65.7 cm) minimum width of opening
- D. $53\frac{3}{16}$ " (135 cm) minimum height of flush inset cutout
- E. $52\frac{3}{8}$ " (133.1 cm) recommended cutout height
- F. $11\frac{1}{16}$ " (1.7 cm) side cleat*
- G. $\frac{1}{4}$ " (0.6 cm) recommended with foot. $15\frac{1}{16}$ " to $1\frac{1}{16}$ " (2.2 cm to 2.7 cm) allowable without foot*
- H. Recommended junction box location
- I. $4\frac{5}{8}\text{''}-14\frac{3}{4}\text{''}$ (11.7-37.5 cm) bottom of cutout to floor
- J. 25" (63.5 cm) minimum depth of cutout

30" (76.2 cm) Models

- A. $\frac{3}{4}$ " (1.9 cm) top cleat*
- B. $30\frac{1}{4}$ " (76.8 cm) minimum width of flush inset cutout
- C. $28\frac{7}{8}$ " (73.3 cm) minimum width of opening
- D. $53\frac{3}{16}$ " (135 cm) minimum height of flush inset cutout
- E. $52\frac{3}{8}$ " (133.1 cm) recommended cutout height
- F. $11\frac{1}{16}$ " (1.7 cm) side cleat*
- G. $\frac{1}{4}$ " (0.6 cm) recommended with foot. $15\frac{1}{16}$ " to $1\frac{1}{16}$ " (2.2 cm to 2.7 cm) allowable without foot*
- H. Recommended junction box location
- I. $4\frac{5}{8}\text{''}-32\text{''}$ (11.7-81.3 cm) bottom of cutout to floor
- J. 25" (63.5 cm) minimum depth of cutout

*Cleats and spacers must be recessed $1\frac{3}{8}$ " (3.5 cm) from the front of the cabinet.

Electrical

- Electrical supply junction box should be located 3" (7.6 cm) maximum below the support surface when the oven is installed in a wall cabinet. A 1" (2.5 cm) minimum diameter hole should have been drilled in the right rear or left rear corner of the support surface to pass the appliance cable through to the junction box.

NOTE: For undercounter installation, it is recommended that the junction box be located in the adjacent right or left cabinet. If you are installing the junction box on rear wall behind oven, it is recommended that the junction box be recessed and located in the upper center of the cabinet.

- Models rated from 7.3 to 9.6 kW at 240 V (5.4 to 7.4 kW at 208 V) require a separate 40 A circuit. Models rated at 4.8 kW and below at 240 V (3.6 kW and below at 208 V) require a separate 20 A circuit.
- Oven must be connected to the proper electrical voltage and frequency as specified on the model/serial/rating plate. The model/serial/rating plate is located under the control panel on single ovens and under the control panel on the upper oven cavity on double ovens.