



JLAB®  
EPIC PARTY  
BLUETOOTH  
SPEAKER

We love that you are rocking JLab!  
We take pride in our products and fully stand behind them.



#### YOUR WARRANTY

All warranty claims are subject to JLab authorization and at our sole discretion. Retain your proof of purchase to ensure warranty coverage.



#### CONTACT US

Reach out to us at [support@jlab.com](mailto:support@jlab.com) or visit [jlab.com/contact](https://jlab.com/contact)

### REGISTER TODAY

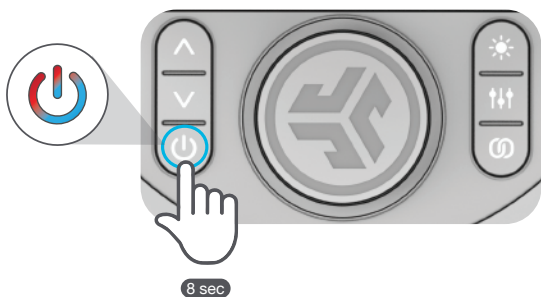
[jlab.com/register](https://jlab.com/register)

Product updates | How-to tips  
FAQs & more

## PAIR UP

1

Press and hold button. Lights will flash **blue/red** to indicate pairing mode.



2

Select JLab Epic Party in your device settings to connect.



## GET CHARGED



PULSES:  
CHARGING

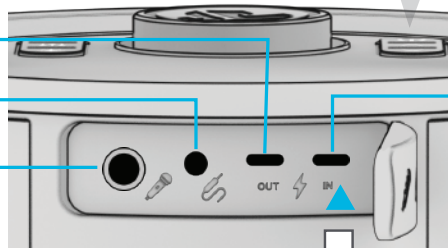


LIGHTS OFF:  
CHARGED

USB-C CHARGE OUT  
(charge other devices)

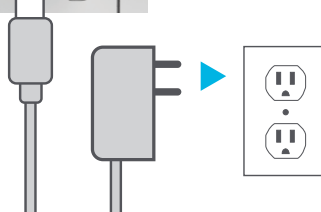
AUX INPUT

1/4" INPUT

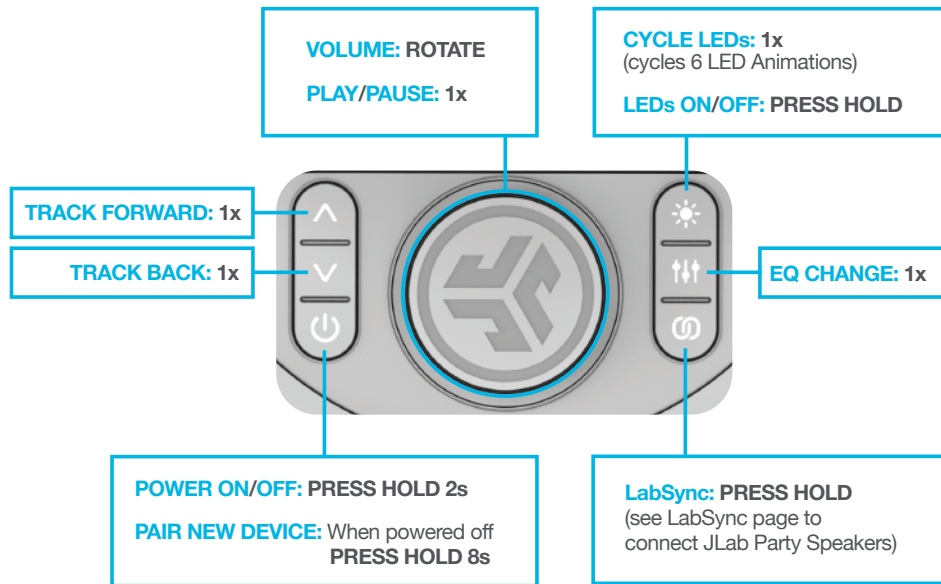


USB-C CHARGE IN  
(charge Epic Party)

Connect 30w charger to **USB-C IN** and wall outlet to charge.

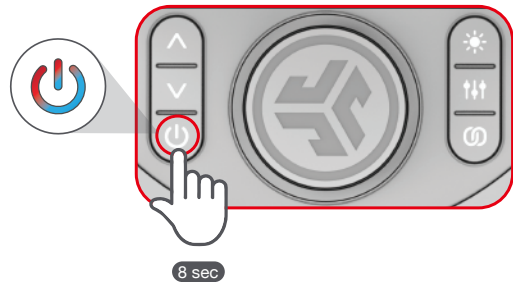


## GO AHEAD, PRESS THE BUTTON

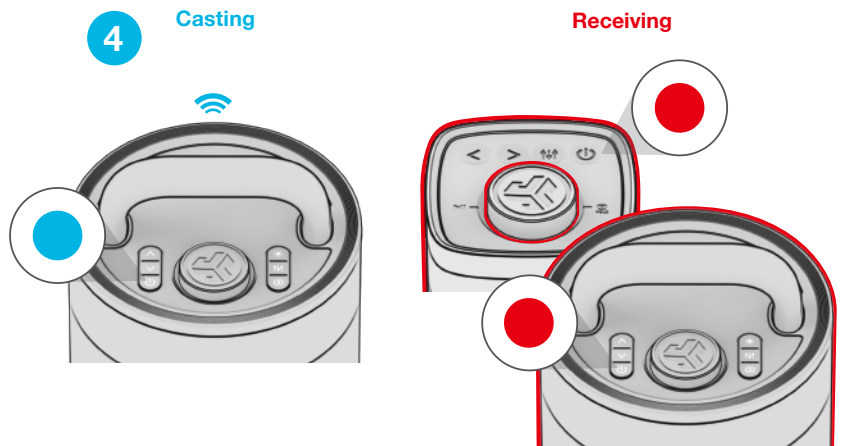


## LabSync (CAST TO OTHER JLAB PARTY SPEAKERS)

- 1 Connect **Epic Party** to your device.  
Press Hold to enter LabSync.  
**Epic Party** will say "LabSync"
- 2 With your other **JLab Party Speaker(s)** turned off, **Press hold** power button until LEDs flash blue/red.



- 3 Followed by entering LabSync on your other speaker(s).



### QUICK TIPS:

- Epic Party is set to Eco-Mode by default. Lights will turn off when battery is less than 25% to conserve power.
- Turning off the lights will significantly improve playtime.
- Epic Party will auto power off if no media is playing for 30 minutes.
- Download the JLab App to adjust the default settings.
- LabSync works with all JLab Pop Party, GO Party, JBuds Party, and Epic Party speakers.

DOWNLOAD THE APP

Customize the Sound, Lights, and Features.



[Shop products](#) | [Product alerts](#) | [Burn-in your headphones](#)

JLab Store + Burn-in Tool

