

SONY

5-069-920-11(1)



5069920110

Interchangeable Lens Digital Camera

α7V

E-mount

 WW824259
 WW084220
 WW486983

Startup Guide

ILCE-7M5

About the "Help Guide"



For detailed instructions on using the camera, refer to the "Help Guide" (web manual). You can also download a printable PDF from the home page of the "Help Guide."

https://rd1.sony.net/help/ilc/2540/h_zz/

ILCE-7M5 Help Guide

Preparations

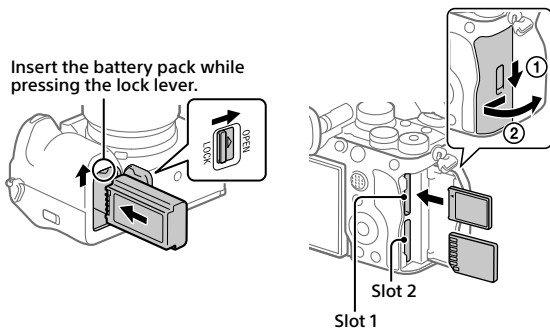
Checking the supplied items

The number in parentheses indicates the number of pieces.

- Camera (1)
- Rechargeable battery pack NP-FZ100 (1)
- Shoulder strap (1)
- Body cap (1) (attached to the camera)
- Shoe cap (1) (attached to the camera)
- Eyepiece cup (1) (attached to the camera)
- Startup Guide (this manual) (1)
- Reference Guide (1)

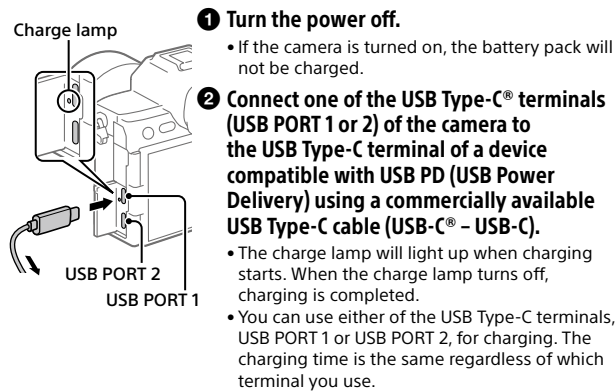
Inserting the battery pack (supplied)/memory card (sold separately) into the camera

Open the battery cover and the memory card cover, insert the battery/memory card, and close the covers.



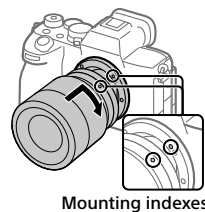
Slot 1 on this camera supports both CFexpress™ Type A memory cards and SD memory cards, while slot 2 supports only SD memory cards. In the default settings, images are recorded on the memory card in Slot 1. For detailed setup instructions, refer to the Help Guide. When you use a memory card with the camera for the first time, it is recommended that you format the card on the camera for more stable performance of the memory card.

Charging the battery pack



Use a USB-PD-compatible device with an output of 18 W (9 V/2 A) or more and a USB Type-C cable (USB-C - USB-C) that supports 3 A or more.

Attaching a lens



Performing initial setup for the camera

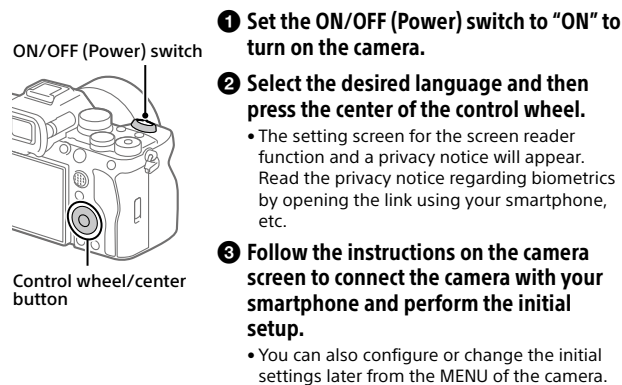
By establishing a Bluetooth connection (pairing) between the camera and a smartphone, you can perform initial camera setup such as date and time settings from the smartphone. Install the smartphone application on your smartphone in advance, and then follow steps ① to ③ under "Procedures for initial camera setup."

Installing the dedicated smartphone application



Install the application from the following website. Also, update to the latest version of the smartphone application.
<https://www.sony.net/ca/>

Procedures for initial camera setup

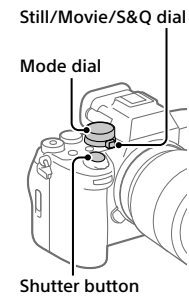


Pairing the camera with your smartphone later (Smartphone Connection)



For details on the connection method, refer to the following Help Guide URL:
https://rd1.sony.net/help/ilc/2540_pairing/h_zz/

Shooting still images



- 1 Turn and set the Still/Movie/S&Q dial to **(Still)** while pressing the lock release button on the front of the Still/Movie/S&Q dial.
- 2 Turn the mode dial and select the desired shooting mode.
- 3 Press the shutter button halfway down to focus.
- 4 Press the shutter button all the way down.

Viewing and developing RAW images on a computer

Install the computer software from the following website. Update the computer software to the latest version before using it.
<https://www.sony.net/disoft/help/>

Notes on use

Refer to "Precautions" in the "Help Guide" as well.

About the applications for smartphones/computers

The specifications of the applications may change without notice.

Notes on handling the product

- Do not leave the lens or the viewfinder exposed to a strong light source such as sunlight. Because of the lens's condensing function, doing so may cause smoke, fire, or a malfunction inside the camera body or the lens. If you have to leave the camera exposed to a light source such as sunlight, attach the lens cap to the lens.
- If sunlight or other strong light enters the camera through the lens, it may focus inside the camera and cause smoke or fire. Attach the lens cap when storing the camera. When shooting with backlighting, keep the sun sufficiently far away from the angle of view. Even if it is slightly away from the angle of view, smoke or fire may still occur.
- Do not look at sunlight or a strong light source through the lens when it is detached. This may result in unrecoverable damage to the eyes or cause a malfunction.
- This camera (including accessories) has magnet(s) which may interfere with pacemakers, programmable shunt valves for hydrocephalus treatment, or other medical devices. Do not place this camera close to persons who use such medical devices. Consult your doctor before using this camera if you use any such medical device.
- Increase the volume gradually. Sudden loud noises can damage your ears. Be especially careful when listening to headphones.
- Do not leave this unit, the supplied accessories, or memory cards within the reach of infants. They may be accidentally swallowed. If this occurs, consult a doctor immediately.
- When shooting with the viewfinder, you may experience symptoms such as eyestrain, fatigue, motion sickness, or nausea. We recommend that you take a break at regular intervals when you are shooting with the viewfinder.
- If the monitor or electronic viewfinder is damaged, stop using the camera immediately. The damaged parts may harm your hands, face, etc.
- When shooting still images continuously, the monitor or viewfinder may flash between the shooting screen and a black screen. If you keep watching the screen in this situation, you may experience uncomfortable symptoms such as feeling of unwellness. If you experience uncomfortable symptoms, stop using the camera, and consult your doctor as necessary.
- When recording or streaming for long periods of time or recording 4K movies, if the same part of your skin touches the camera for a long period of time while using the camera, even if the camera does not feel hot to you, it may cause symptoms of a low-temperature burn such as redness or blistering. Pay special attention in the following situations and use a tripod, etc.
 - When using the camera in a high temperature environment
 - When someone with poor circulation or impaired skin sensation uses the camera
 - When using the camera with [Auto Power OFF Temp.] set to [High]

Notes on using memory cards

If **[H]** (overheating warning icon) is displayed on the monitor, do not remove the memory card from the camera right away. Instead, wait for a while after turning off the camera, and then remove the memory card. If you touch the memory card while it is hot, you may drop it and the memory card may be damaged. Be careful when removing the memory card.

Sony lenses/accessories

Using this unit with products from other manufacturers may affect its performance, leading to accidents or malfunction.

Note on the frequency band for wireless LAN

When using the wireless LAN function outdoors, set the band to 2.4 GHz by following the procedure below. (WW486983/WW084220 only)
 • MENU → **(Network)** → [Wi-Fi] → [Wi-Fi Frequency Band]

How to turn off wireless network functions (Wi-Fi, etc.) temporarily

When you board an airplane, etc., you can turn off all wireless network functions temporarily using [Airplane Mode].

How to turn on or off Wi-Fi function

Select MENU → **(Network)** → [Wi-Fi] → [Wi-Fi Connect] → [On] or [Off].

How to turn on or off Bluetooth function

Select MENU → **(Network)** → [Bluetooth] → [Bluetooth Function] → [On] or [Off].

