

RTU304GX

| | |
|----------------|------------------------|
| Product family | Cooktop |
| Installation | Proud or flush mounted |
| Dimensions | 30" |
| Type | Gas |
| EAN code | 8017709292508 |



Aesthetic



| | |
|----------------------|------------------------|
| Aesthetics | Portofino |
| Color | Stainless steel |
| Finishing | Satin |
| Material | Stainless steel |
| Stainless steel type | Brushed |
| Grates | Cast iron |
| Burners material | Aluminum |
| Control setting type | Control knobs |
| No. of controls | 4 |
| Controls color | Stainless steel effect |
| Logo | Applied |

Program / Functions

| | |
|---------------|---|
| Cooking zones | 4 |
|---------------|---|

Technical Features

| | |
|-------------------------|-----|
| Front-left - 12000 BTU | |
| Rear-left - 12000 BTU | |
| Rear-right - 12000 BTU | |
| Front-right - 18000 BTU | |
| Gas safety valves | Yes |

Accessories Included

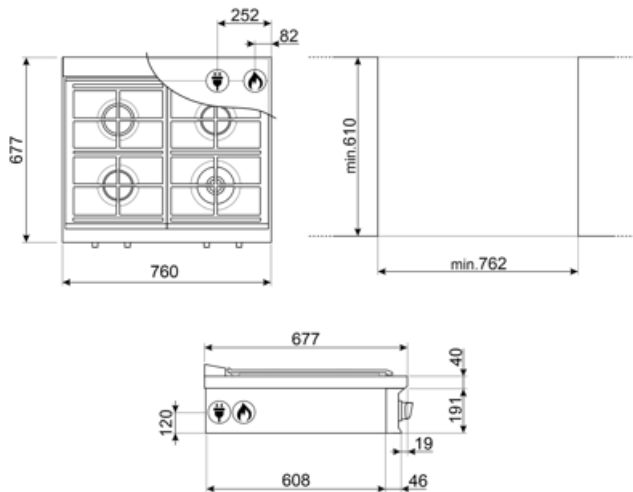
Other accessories Simmer Cap

Electrical Connection

| | | | |
|---------------------|--------------|-------------------|--------------|
| Nominal power | 12 W | Frequency | 60 Hz |
| Current | 0.1 A | Power cord length | 47 1/4 " |
| Voltage | 120 V | Plug | (B) USA 120V |
| Electric cable type | Single phase | | |

Gas Connection

| | | | |
|----------------|-----------------|----------------------------|--------------------|
| Gas Type | G20 Natural gas | Other gas nozzles included | G30 LPG liquid gas |
| Gas connection | Cylindric | | |



Symbols glossary



Heavy duty cast iron pan stands: for maximum stability and strength.



Ultra rapid burners: Powerful ultra rapid burners offer up to 5kw of power.



Knobs control