







# ASSEMBLY INSTRUCTIONS

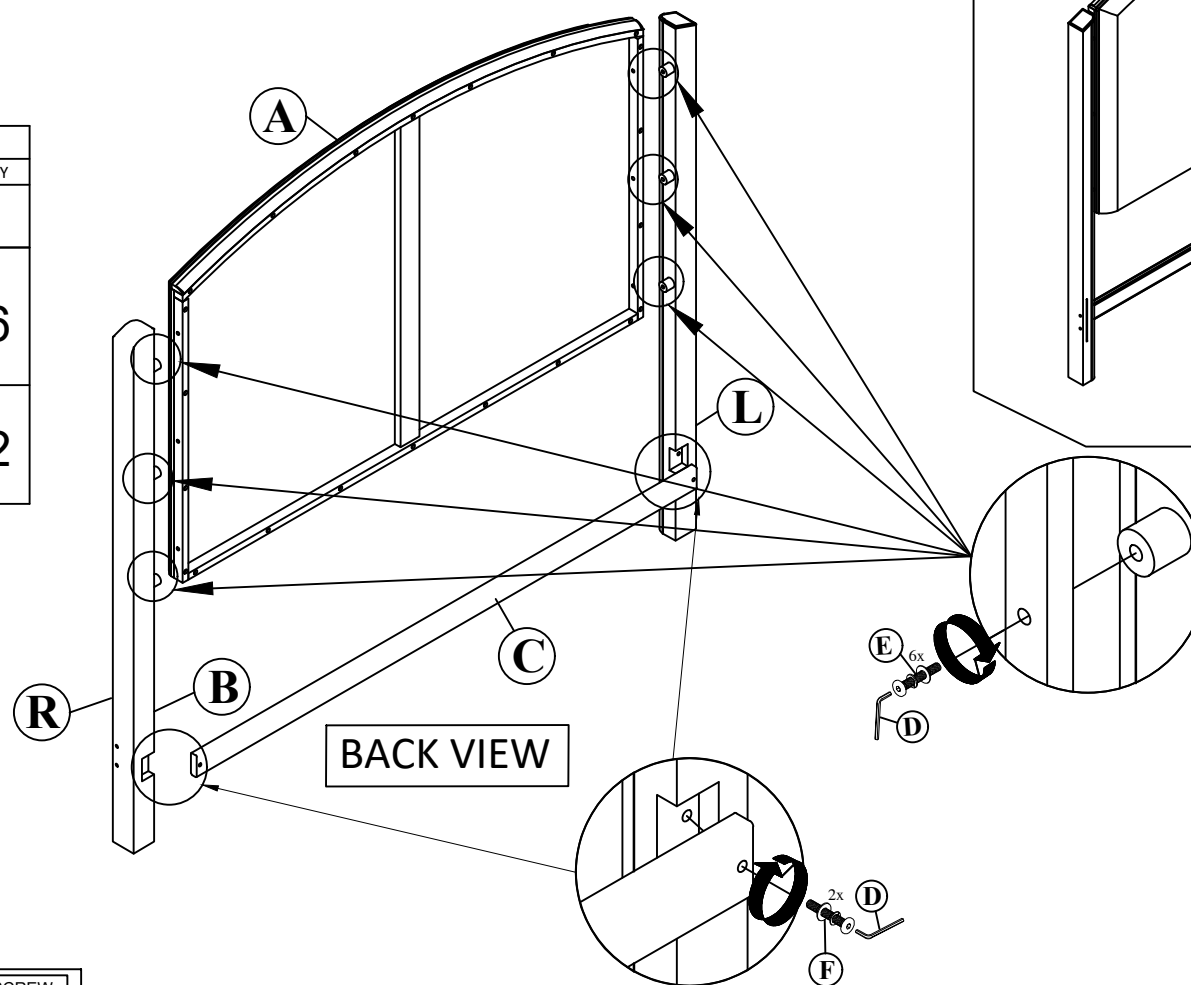
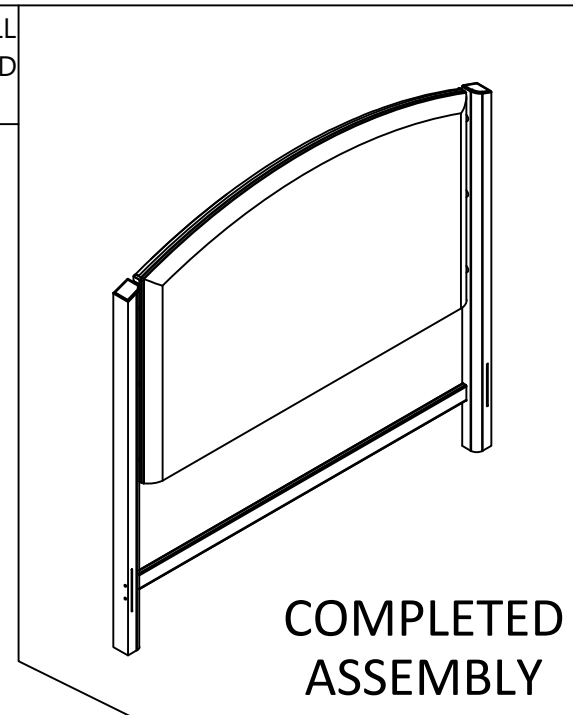
CROWN MARK (CRWN)

MODEL:B6530-K-HB/ B6530-Q-HB KING/ QUEEN HEADBOARD

THANK YOU FOR PURCHASING THIS QUALITY PRODUCT.BE SURE TO CHECK ALL PACKING MATERIAL CAREFULLY FOR SMALL PARTS WHICH MAY HAVE COME LOOSE INSIDE THE CARTON DURING SHIPMENT.IDENTIFY AND COUNT ALL PARTS AND COMPARE WITH HARDWARE LIST AS BELOW:

(BOX 1) BOX OF HEADBOARD			
ITEM	DRAWING	DESCRIPTION	QTY
A		HEAD BOARD	1
B		HB LEG POST (L/R)	2
C		BOTTOM RAIL	1

(BOX 1) BOX OF HEADBOARD (HARDWARE LIST)				
ITEM	DRAWING	DESCRIPTION	DIMENSION	QTY
D		ALLEN KEY M4	4 X 35 X 55MM	1
E		CONNECTION BOLT (JCBC M6x85mm)(Nyllok) W/SPRING WASHER & WASHER MEDIUM		6
F		CONNECTION BOLT (JCBC M6x35mm)(Nyllok) W/SPRING WASHER & WASHER MEDIUM		2



STEP 1 :ATTACH AND TIGHTEN THE LEG POST (L/R) (B) TO THE HEADBOARD (A).INSERT CONNECTION BOLT (E) WITH WASHER TO AFFIX.

STEP 2 :AFFIX THE BOTTOM RAIL (C) TO THE HEADBOARD LEG (B) USING CONNECTION BOLT (F) WITH WASHER.

**NOTE:**PERIODICALLY CHECK TO ENSURE THAT ALL CONNECTORS (BOLTS, SCREW, ETC) ARE TIGHT.

**CLEANING INSTRUCTION**  
AFTER ASSEMBLED,CLEAN & POLISH THE COMPLETE PARTS IF NECESSARY WITH SOFT CLOTH AND INDUSTRIAL RECOGNIZED FURNITURE POLISH.

THE HARDWARE IS LOCATED IN THE PACKING ITEMS

MADE IN MALAYSIA

# ASSEMBLY INSTRUCTIONS

## CROWN MARK (CRWN)

MODEL: B6530-Q-HB/B6530-Q-FB/B6530-KQ-RAIL QUEEN BED

THANK YOU FOR PURCHASING THIS QUALITY PRODUCT. BE SURE TO CHECK ALL PACKING MATERIAL CAREFULLY FOR SMALL PARTS WHICH MAY HAVE COME LOOSE INSIDE THE CARTON DURING SHIPMENT. IDENTIFY AND COUNT ALL PARTS AND COMPARE WITH HARDWARE LIST AS BELOW:

PART LIST			
(BOX 1) BOX OF HEADBOARD			
ITEM	DRAWING	DESCRIPTION	QTY
A		HEADBOARD	1

(BOX 2) BOX OF FOOTBOARD			
ITEM	DRAWING	DESCRIPTION	QTY
B		FOOTBOARD	1
C		WOODEN SLAT	5
D		SLATS SUPPORT	5

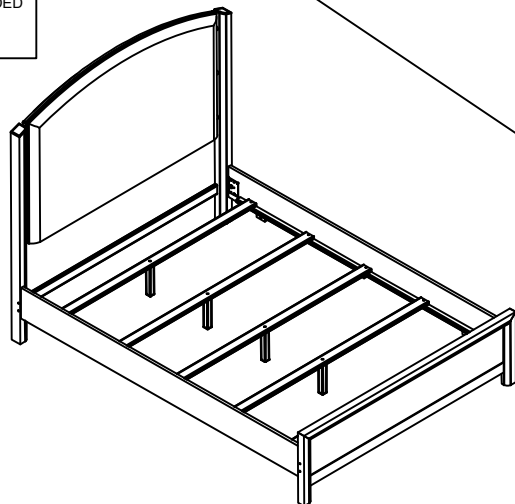
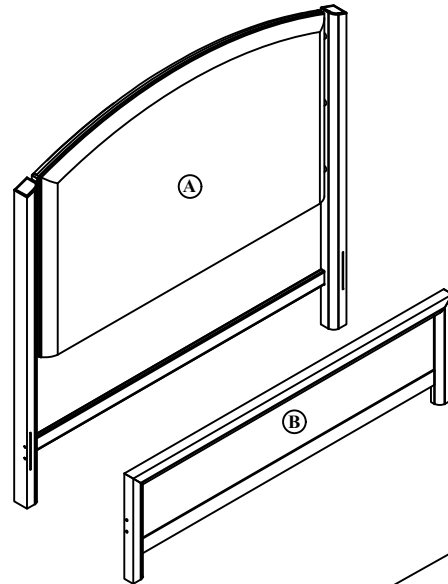
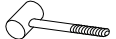
(BOX 2) BOX OF FOOTBOARD HARDWARE LIST				
ITEM	DRAWING	DESCRIPTION	DIMENSION	QTY
E		C.S.K. SCREW(M4)	4 X 32MM	10

(BOX 3) BOX OF SIDE RAILS			
ITEM	DRAWING	DESCRIPTION	QTY
F		SIDE RAILS	2

SCREW DRIVER IS NOT INCLUDED



HAMMER IS NOT INCLUDED

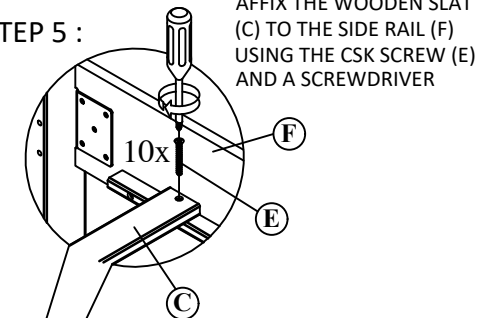


COMPLETED ASSEMBLY

**NOTE:** PERIODICALLY CHECK TO ENSURE THAT ALL CONNECTORS (BOLTS, SCREW, ETC) ARE TIGHT.

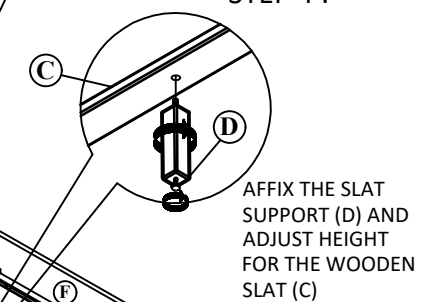
**CLEANING INSTRUCTION**  
AFTER ASSEMBLED, CLEAN & POLISH THE COMPLETE PARTS IF NECESSARY WITH SOFT CLOTH AND INDUSTRIAL RECOGNIZED FURNITURE POLISH.

STEP 5 :



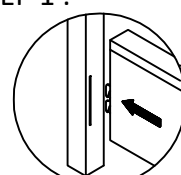
AFFIX THE WOODEN SLAT (C) TO THE SIDE RAIL (F) USING THE CSK SCREW (E) AND A SCREWDRIVER

STEP 4 :

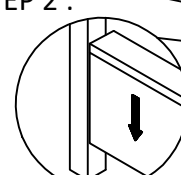


AFFIX THE SLAT SUPPORT (D) AND ADJUST HEIGHT FOR THE WOODEN SLAT (C)

STEP 1 :

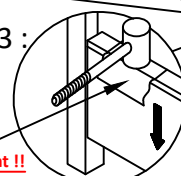


STEP 2 :

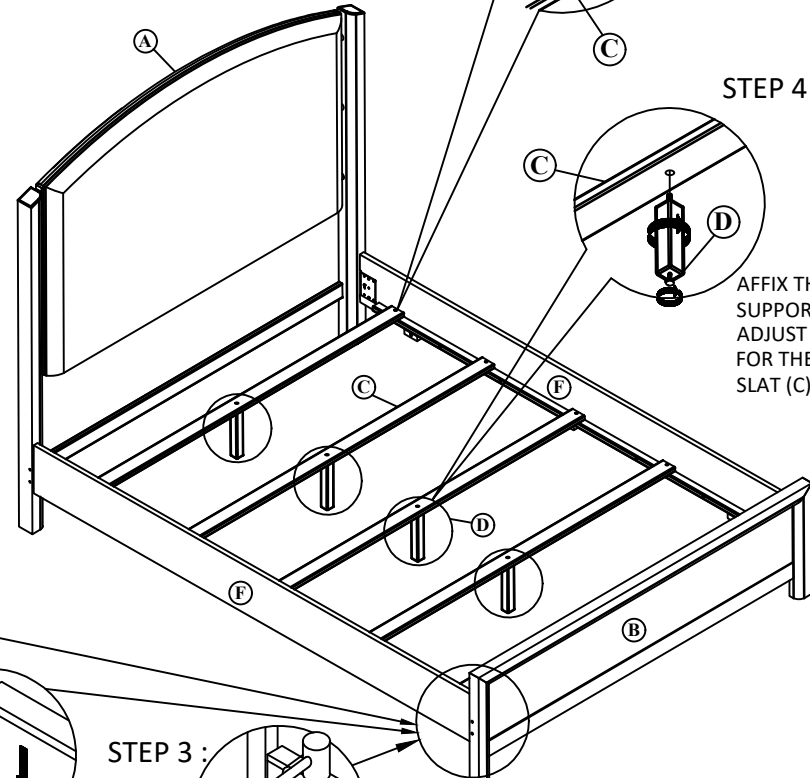


PRESS LATERALLY INTO THE GROOVE AND DROP DOWN.

STEP 3 :



**Important !!**  
LEVEL THE SIDE RAIL BY COVERING WITH A SOFT CLOTH AND TAPPING WITH A HAMMER.



THE HARDWARE IS LOCATED IN THE PACKING ITEMS

MADE IN MALAYSIA