



ACCESS DOORS

Single and Double Access Doors



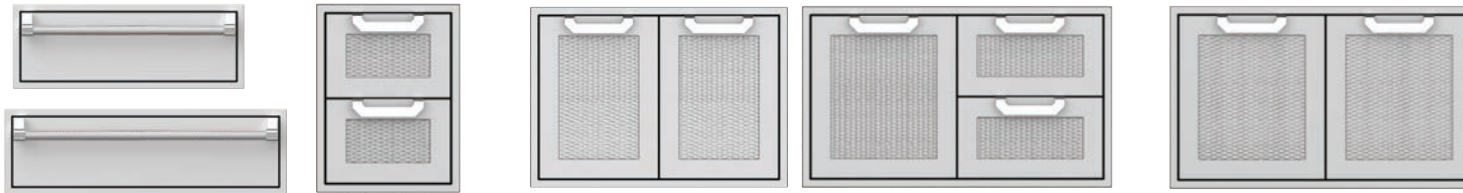
- Available in 18", 24", 30", 36", and 42" widths
- Heavy gauge welded body construction
- Recessed Marquise™ accented panels with commercial grade handles
- Soft close door hinges with alignment adjustability
- Twelve (12) Hestan signature color finishes

STORAGE

Drawers 30", 36" and 16" Double

Storage Cabinets 30", 36", or 42" Double Door or Door Drawer Combo

Magnetic Sealed Pantry Storage 36" only



- Heavy gauge welded body construction
- Motion activated illumination
- Recessed Marquise™ accented panels with commercial grade handles
- Soft close door hinges with alignment adjustability
- Twelve (12) Hestan signature color finishes

RECYCLE, CLEAN-UP & TRASH

Trash and Recycle Center Storage Drawer



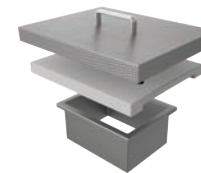
- Available in 20" width
- Heavy gauge welded body construction
- Slide out trash and recycle bins that are easily removable for emptying and cleaning
- Full extension slides
- Motion activated illumination
- Recessed Marquise™ accented panel with commercial grade handle
- Twelve (12) Hestan signature color finishes

Paper Towel Dispenser

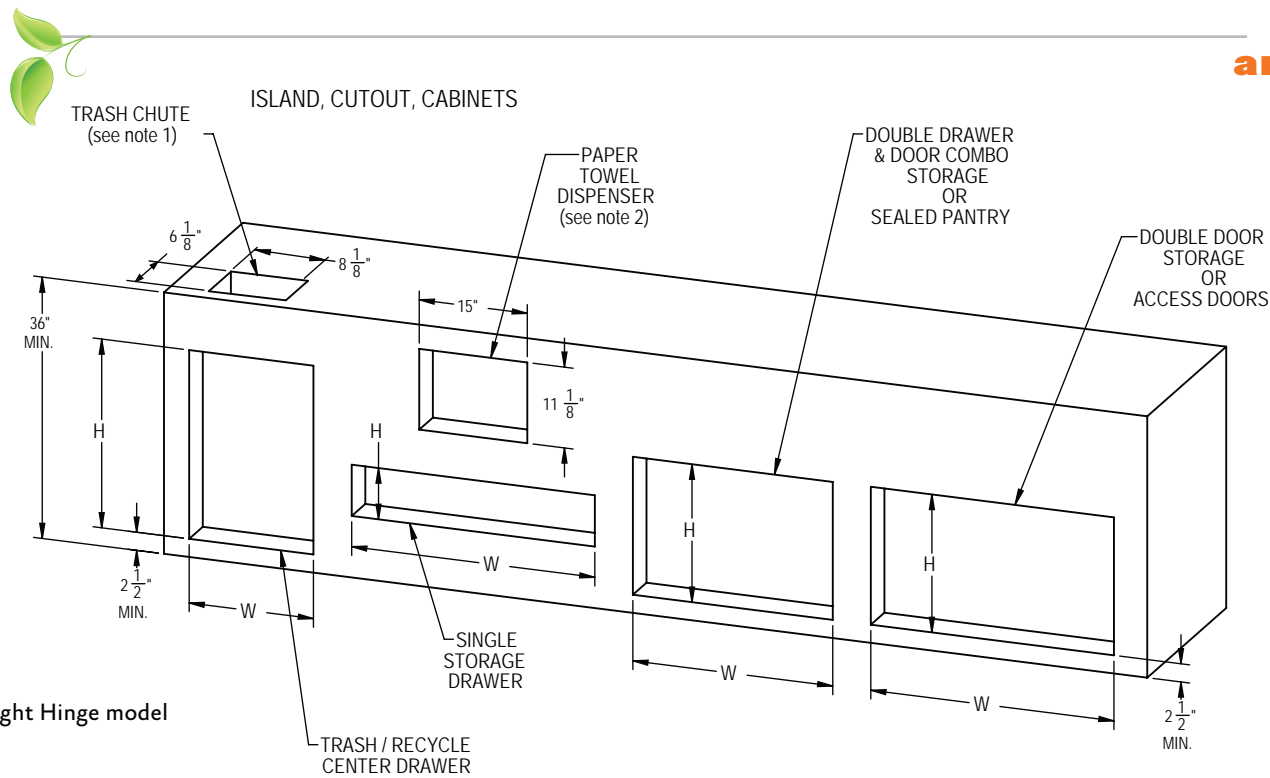


- Can be mounted horizontally or vertically (left or right hinged)
- Removable paper towel holder - fits standard paper towel roll
- Heavy gauge welded body construction
- Recessed Marquise™ accented panel with commercial grade handle
- Twelve (12) Hestan signature color finishes

Countertop Trash Chute



- Heavy gauge welded body construction
- Complimentary to Trash Center
- Easy disposal without pulling out the Trash Center door
- Marquise™ accented stainless steel top cover with handle
- Commercial grade cutting board that slides for easy access to chute



NOTES:

- 1) Trash Chute AGTC cutout depends on type of countertop used. Please refer to installation instructions for details.
- 2) Paper Towel Dispenser AGPTD16 can be installed in 3 different orientations using these cutout dimensions. Please refer to installation instructions for details.

— = specify (L) or (R) for Left or Right Hinge model
 XX = width needed

| Built - In Models | Description | Product Width Options | | Cutout Dimensions | | |
|-------------------|---|-----------------------|-----------------------------|-------------------|---------|--|
| | | W (in.) | W (in.) | D (in.) | H (in.) | |
| AGAD__xx | Single Access Door , with Marquise accent panel | 18" or 24" | 15-7/8" or 21-7/8" | n/a | 19 | |
| AGADxx | Double Access Doors , with Marquise accent panel | 30", 36" or 42" | 27-7/8", 33-7/8" or 39-7/8" | n/a | 19 | |
| AGSDxx | Double Storage Doors , with Marquise accent panel | 30", 36" or 42" | 27-7/8", 33-7/8" or 39-7/8" | 23-3/8 | 19 | |
| AGSRxx | Single Storage Drawer , all stainless front with Marquise accent handle | 30" or 36" | 27-7/8" or 33-7/8" | 23-3/8 | 8-7/8 | |
| AGDR16 | Double Drawers , with Marquise accent panel | 16" | 13-7/8 | 23-3/8 | 19 | |
| AGSDRxx | Double Drawer and Storage Door Combination w/ Marquise accent panel | 30", 36" or 42" | 27-7/8", 33-7/8" or 39-7/8" | 23-3/8 | 19 | |
| AGLP36 | Double Sealed Pantry Storage Doors, with Marquise accent panel | 36" | 33-7/8 | 23-3/8 | 19 | |
| AGTRC20 | Trash and Recycle Center Storage Drawer, with Marquise accent panel | 20" | 17-1/4 | 24 | 26 | |
| AGTC | Countertop Trash Chute with Cutting Board and Cover | - | 6-1/8 | 8-1/8 | n/a | |
| AGPTD16 | Paper Towel Dispenser, with Marquise accent panel | 16" | 11-1/8 | 10-1/8 | 15 | |

Hestan Outdoor products are approved for outdoor use only. Hestan Commercial Corporation reserves the right to change materials and specifications without notice.