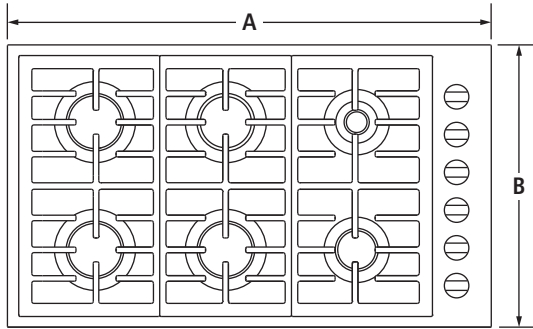


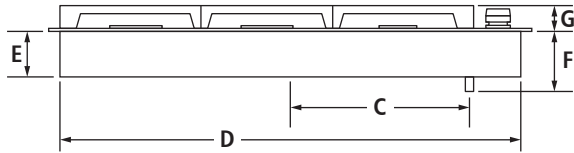
36" GAS COOKTOP  
 JGC7636B – 36" x 5¼" x 21"

PRODUCT DIMENSIONS

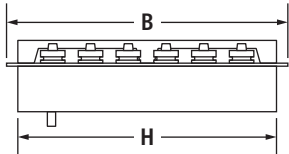


TOP VIEW

MODEL #		JGC7636B	
		in	cm
<b>A</b>	Overall width	36	91.4
<b>B</b>	Depth of cooktop	21	53.3
<b>C</b>	Center of cooktop to center of gas inlet	13½	34.3
<b>D</b>	Width of recessed cooktop	35¼	89.5
<b>E</b>	Height of recessed cooktop	¾	8.3
<b>F</b>	Height from gas inlet to countertop	5¼	13.3
<b>G</b>	Height with grates	1¼	3.2
<b>H</b>	Depth of recessed cooktop	20¼	51.4



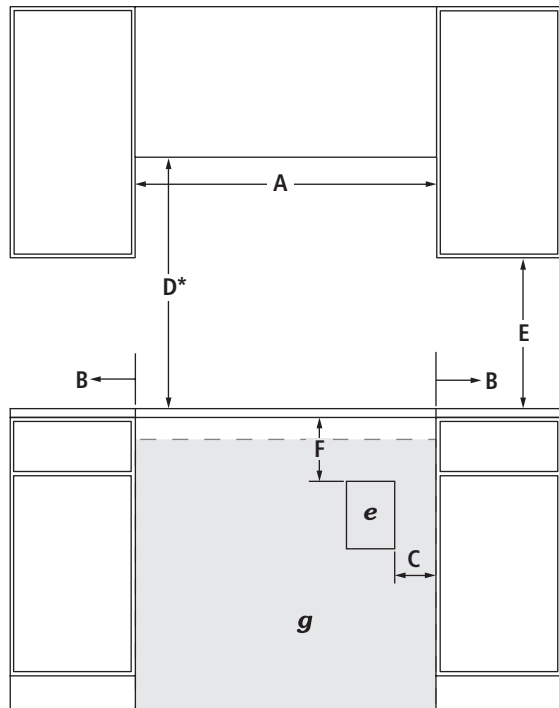
FRONT VIEW



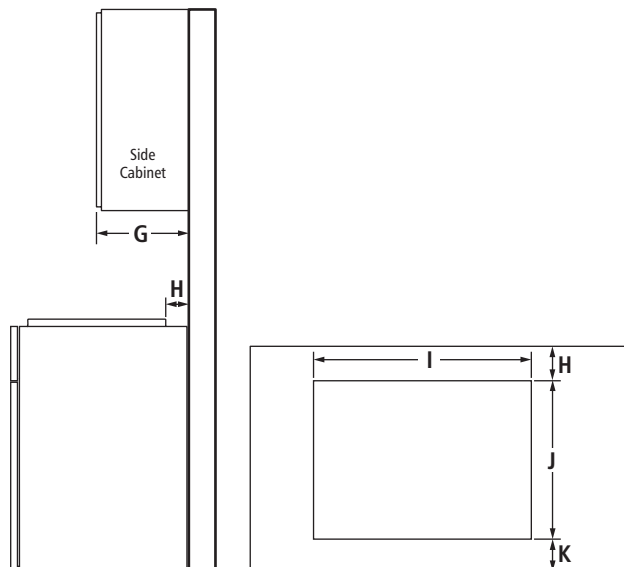
SIDE VIEW

36" GAS COOKTOP  
JGC7636B – 36" x 5¼" x 21"

OPENING/CLEARANCE DIMENSIONS



FRONT VIEW



SIDE VIEW

TOP VIEW – CUTOUT

MODEL #		JGC7636B	
		in	cm
<b>A</b>	Width of combustible area above cooking surface (min.)	36	91.4
<b>B</b>	Width from cooktop to fixed wall or other combustible material (min.)	6	15.2
<b>C</b>	Width to outer edge of outlet (max.)	24	61.0
<b>D*</b>	Height to bottom of uncovered wood or metal cabinet above cooking surface (min.)	30	76.2
<b>E</b>	Height to bottom of uncovered wood or metal cabinet (min.)	18	45.7
<b>F</b>	Height to top edge of outlet (min.)	5½	14.0
<b>G</b>	Depth of upper cabinet (recommended)	13	33.0
<b>H</b>	Depth from cutout to wall (min.)	2⅝	5.9
<b>I</b>	Width of cutout	35⅜	89.9
<b>J</b>	Depth of cutout	20⅜	51.8
<b>K</b>	Depth from cutout to front of countertop	2⅝	5.9
<b>e</b>	Recommended electrical access location		
<b>g</b>	Recommended gas supply line location		

\*Dimension can be reduced by 6" (15.2 cm) when bottom of wood or metal cabinet is covered by not less than ¼" (0.6 cm) flame retardant millboard covered with not less than No. 28 MSG sheet metal, 0.015" (0.4 mm) stainless steel, 0.024" (0.6 mm) aluminum or 0.020" (0.5 mm) copper.

If installing a hood or microwave hood combination above the cooktop, follow the hood or microwave hood combination instructions for dimensional clearances above the cooking surface.

**GAS REQUIREMENTS**

**Natural Gas**

This cooktop is factory-set for use with natural gas.

**LP Gas Conversion**

Conversion must be done by a qualified service technician. To convert to LP gas, use the LP gas conversion kit provided with the cooktop.

**ELECTRICAL REQUIREMENTS**

120 volt, 60 Hz, AC only, 15-amp fused, electrical circuit is required. A time-delay fuse or dedicated circuit is recommended.

**LOCATION REQUIREMENTS**

- To ensure cooktop base clearance, cabinet side walls need to be wider than the cutout.
- If cabinet has a drawer, allow a 4" (10.2 cm) minimum clearance between countertop and top of drawer. Drawer depth may need to be shortened to avoid interfering with the regulator.

SINGLE WALL OVEN AND COOKTOP COMBINATIONS

APPROVED MODEL NUMBER COMBINATIONS

**SINGLE WALL OVENS**

30-Inch: JJW3430W, JJW2430W, JJW2330W

27-Inch: JJW2427W, JJW2327W

**INDUCTION COOKTOPS**

36-Inch: JIC4536X

30-Inch: JIC4430X

**GAS COOKTOPS**

36-Inch: JGC7636B, JGC9536BD, JGC1536AD, JGC8536BD

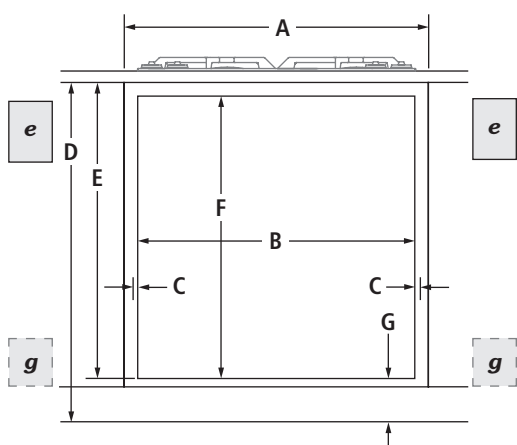
30-Inch: JGC7530B, JGC9430BD, JGC1430AD

**ELECTRIC COOKTOPS**

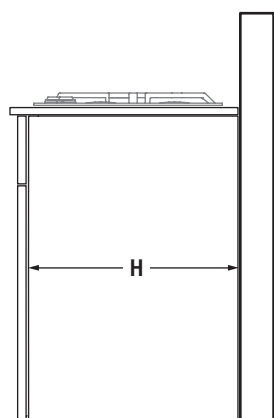
36-Inch: JEC4536B, JEC3536B

30-Inch: JEC4430B, JEC3430B

OPENING/CLEARANCE DIMENSIONS



**FRONT VIEW –  
UNDER COUNTER INSTALLATION**  
(with cooktop installed above)



**SIDE VIEW –  
UNDER COUNTER INSTALLATION**  
(with cooktop installed above)

MODEL #	JJW3430W JJW2430W JJW2330W		JJW2427W JJW2327W	
	in	cm	in	cm
<b>A</b>	Width of cabinet (min.)			
	30	76.2	27	68.6
<b>B</b>	Width of cutout (recommended)			
	28½	72.4	25½	64.8
<b>C</b>	Oven trim overlap			
	⅝	1.6	⅝	1.6
<b>D</b>	Bottom of countertop to floor			
	34½	87.6	34½	87.6
<b>E</b>	Bottom of countertop to bottom of cutout			
	Induction cooktop combination			
	30⅞	78.4	30⅞	78.4
Gas cooktop combination				
	29⅞	75.9	29⅞	75.9
Electric cooktop combination				
	29⅞	75.9	29⅞	75.9
<b>F</b>	Height of cutout (recommended)			
	27¾	70.5	27¾	70.5
<b>G</b>	Bottom of cutout to floor			
	Induction cooktop combination			
	3⅝	9.2	3⅝	9.2
Gas cooktop combination				
	4⅝	11.7	4⅝	11.7
Electric cooktop combination				
	4⅝	11.7	4⅝	11.7
<b>H</b>	Depth of cabinet (min.)			
	24	61.0	24	61.0
<b>e</b>	Recommended junction box location			
<b>g</b>	Recommended gas supply line location for gas cooktop			

**NOTE:** For under counter installation, the junction box should be located in the adjacent right or left cabinet. Drill a 1" (2.5 cm) minimum diameter hole in an upper corner of the side wall for access to the junction box.

**CABINET REQUIREMENTS**

**NOTE:** When using under counter installation, check cabinet manufacturer's specifications to verify fit.

# JENN-AIR® DETAILED PLANNING DIMENSIONS

## VENTILATION SELECTION CHART – COOKTOPS

MODEL #	ACCOLADE™ DOWNDRAFT SYSTEM	TELESCOPING DOWNDRAFT SYSTEM		PRO-STYLE™ HOODS			EURO-STYLE ISLAND-MOUNT HOODS		EURO-STYLE WALL-MOUNT HOODS		GLASS COLLECTION ISLAND-MOUNT HOOD	GLASS COLLECTION WALL-MOUNT HOODS		PERIMETRIC HOOD	CUSTOM HOOD LINERS	OVER-THE- RANGE MICROWAVE OVENS
	JXD7836B	JXD7036YS	JXD7030YS	JXW9048WP	JXW9036WP JXU9136WP	JXW9030WP JXU9130WP	JXI8042WS	JXI8036WS	JXW8036WS JXW8836WS	JXW8030WS	JXI5036WS	JXW5036WS	JXW5030WS	JXP5032WS	UXL6048YSS <sup>A</sup> UXL6036YSS <sup>A</sup>	JMV9186W JMV8208W
<b>INDUCTION COOKTOPS</b>																
<b>36-INCH</b>																
JIC4536X – 5 Elements	■	■	—	■	■	—	■	■	■	—	■	■	—	■	■	■
<b>30-INCH</b>																
JIC4430X – 4 Elements	■	■	■	■	■	■	■	■	■	■	■	■	■	■	■	■
<b>CONVENTIONAL GAS COOKTOPS</b>																
<b>36-INCH (60,000 BTU total or more)</b>																
JGC7636B – 6 Burners	■	—	—	■	■	—	—	—	—	—	—	—	—	—	1,200 CFM only	—
<b>36-INCH (less than 60,000 BTU total)</b>																
JGC9536BD – 5 Burners	■	■	—	■	■	—	■	■	■	—	■	■	—	■	■	■
JGC1536AD – 5 Burners	■	■	—	■	■	—	■	■	■	—	■	■	—	■	■	■
JGC8536BD – 5 Burners	■	■	—	■	■	—	■	■	■	—	■	■	—	■	■	■
<b>30-INCH (60,000 BTU total or more)</b>																
JGC7530B – 5 Burners	■	■	■	■	■	■	■	■	■	■	■	■	■	■	■	—
<b>30-INCH (less than 60,000 BTU total)</b>																
JGC9430BD – 4 Burners	■	■	■	■	■	■	■	■	■	■	■	■	■	■	■	■
JGC1430AD – 4 Burners	■	■	■	■	■	■	■	■	■	■	■	■	■	■	■	■
<b>CONVENTIONAL ELECTRIC COOKTOPS</b>																
<b>36-INCH</b>																
JEC4536B – 5 Elements	■	■	—	■	■	—	■	■	■	—	■	■	—	■	■	■
JEC3536B – 5 Elements	■	■	—	■	■	—	■	■	■	—	■	■	—	■	■	■
<b>30-INCH</b>																
JEC4430B – 4 Elements	■	■	■	■	■	■	■	■	■	■	■	■	■	■	■	■
JEC3430B – 4 Elements	■	■	■	■	■	■	■	■	■	■	■	■	■	■	■	■

A. Custom hood liners can be used with any of the following blower motors: UXB1200DYS, UXB0600DYS or UXI1200DYS.

KEY	
■	Recommended
—	Not Recommended

Product dimension, cutout and installation specifications are provided for planning purposes only. Before installing any product, be sure to verify cutout dimensions and electrical/gas connections as actual product dimensions may vary.

