

E24304

First Edition / April 2025



G SERIES

GAMING NOTEBOOK PC
SERVICE MANUAL

MORE INFO



COPYRIGHT INFORMATION

No part of this manual, including the products and software described in it, may be reproduced, transmitted, transcribed, stored in a retrieval system, or translated into any language in any form or by any means, except documentation kept by the purchaser for backup purposes, without the express written permission of ASUSTeK COMPUTER INC. ("ASUS").

ASUS PROVIDES THIS MANUAL "AS IS" WITHOUT WARRANTY OF ANY KIND, EITHER EXPRESS OR IMPLIED, INCLUDING BUT NOT LIMITED TO THE IMPLIED WARRANTIES OR CONDITIONS OF MERCHANTABILITY OR FITNESS FOR A PARTICULAR PURPOSE. IN NO EVENT SHALL ASUS, ITS DIRECTORS, OFFICERS, EMPLOYEES OR AGENTS BE LIABLE FOR ANY INDIRECT, SPECIAL, INCIDENTAL, OR CONSEQUENTIAL DAMAGES (INCLUDING DAMAGES FOR LOSS OF PROFITS, LOSS OF BUSINESS, LOSS OF USE OR DATA, INTERRUPTION OF BUSINESS AND THE LIKE), EVEN IF ASUS HAS BEEN ADVISED OF THE POSSIBILITY OF SUCH DAMAGES ARISING FROM ANY DEFECT OR ERROR IN THIS MANUAL OR PRODUCT.

Products and corporate names appearing in this manual may or may not be registered trademarks or copyrights of their respective companies, and are used only for identification or explanation and to the owners' benefit, without intent to infringe.

SPECIFICATIONS AND INFORMATION CONTAINED IN THIS MANUAL ARE FURNISHED FOR INFORMATIONAL USE ONLY, AND ARE SUBJECT TO CHANGE AT ANY TIME WITHOUT NOTICE, AND SHOULD NOT BE CONSTRUED AS A COMMITMENT BY ASUS. ASUS ASSUMES NO RESPONSIBILITY OR LIABILITY FOR ANY ERRORS OR INACCURACIES THAT MAY APPEAR IN THIS MANUAL, INCLUDING THE PRODUCTS AND SOFTWARE DESCRIBED IN IT.

Copyright © 2025 ASUSTeK COMPUTER INC. All Rights Reserved.

LIMITATION OF LIABILITY

Circumstances may arise where because of a default on ASUS' part or other liability, you are entitled to recover damages from ASUS. In each such instance, regardless of the basis on which you are entitled to claim damages from ASUS, ASUS is liable for no more than damages for bodily injury (including death) and damage to real property and tangible personal property; or any other actual and direct damages resulted from omission or failure of performing legal duties under this Warranty Statement, up to the listed contract price of each product.

ASUS will only be responsible for or indemnify you for loss, damages or claims based in contract, tort or infringement under this Warranty Statement.

This limit also applies to ASUS' suppliers and its reseller. It is the maximum for which ASUS, its suppliers, and your reseller are collectively responsible.

UNDER NO CIRCUMSTANCES IS ASUS LIABLE FOR ANY OF THE FOLLOWING: (1) THIRD-PARTY CLAIMS AGAINST YOU FOR DAMAGES; (2) LOSS OF, OR DAMAGE TO, YOUR RECORDS OR DATA; OR (3) SPECIAL, INCIDENTAL, OR INDIRECT DAMAGES OR FOR ANY ECONOMIC CONSEQUENTIAL DAMAGES (INCLUDING LOST PROFITS OR SAVINGS), EVEN IF ASUS, ITS SUPPLIERS OR YOUR RESELLER IS INFORMED OF THEIR POSSIBILITY.

SERVICE AND SUPPORT

Visit our multi-language website at <https://www.asus.com/support/>

Table of Contents

Chapter 1: Introduction

Disclaimer	6
Safety precautions.....	6
Pre-repair checklist.....	8
Repair tools.....	9
Diagnostic tools.....	9
Major components	10

Chapter 2: Service Procedures

Display panel.....	14
Removal.....	15
Installation.....	20
Battery.....	24
Removal.....	25
Installation.....	28
M.2 SSD module	32
Removal.....	33
Installation.....	35
Heat sink	37
Removal.....	38
Installation.....	39
Fan module	40
Removal.....	41
Installation.....	42
Rear camera module	43
Installation.....	46

Camera module	49
Removal	50
Installation.....	51
Speakers	52
Removal	53
Installation.....	54
Pogo pin	55
Removal	56
Installation.....	57
microSD reader board	58
Removal	59
Installation.....	61
I/O board	63
Removal	64
Installation.....	67
Motherboard	70
Removal	71
Installation.....	77
Bottom cover	83
Removal	84
Installation.....	88

Appendices

Wiring and connection diagrams.....	96
-------------------------------------	----

Chapter 1:

Introduction

Disclaimer

ASUS is not responsible for direct, indirect, intentional or unintentional damages resulting from improper installation and operation.

Safety precautions

- Before handling components, use a grounded wrist strap or touch a safely grounded object to avoid damaging them due to static electricity.
- Keep liquids or moisture away from your device to avoid short circuits.
- Remove rings, watches, and any other metal objects from your hands.
- Hold components by the edges to avoid touching the ICs.
- Properly install all components before connecting the AC power.
- Do not use power adapters or batteries from other devices to reduce the risk of injury to persons due to fire or explosion. Use only certified power adapters or batteries supplied by the manufacturer or authorized retailers.
- Detach all clips or flaps before removing cables to prevent damage.

- Disconnect cables, connectors, and power plugs by pulling the plug evenly to avoid damage.
- Use the correct screw models on your device to prevent damage.
- Confirm that the cable orientation is correct before connecting any cables.
- Fully remove all adhesive residue after removing and before installing any components.
- Photograph the appearance of cables, cable routing, connectors, and screws for later reference before proceeding with each step.

Pre-repair checklist

- Read the entire manual before starting any service procedures and follow all instructions.
 - Back up the data on your device.
 - Place your device on a clean and stable surface.
 - Turn off your device.
 - Disconnect all connected peripherals and cables.
 - Disconnect all power cables and remove the battery pack (if applicable).
-

IMPORTANT!

- If you are uncertain about performing the described service procedures, stop and contact an authorized service center for assistance.
 - Purchase replacement components from authorized retailers of this device to ensure maximum compatibility and reliability.
-

NOTE:

- The illustrations are for reference only.
 - The service procedures described in this manual depend on the model configuration and may not reflect the entire servicing process. To service components that are not covered in this manual, please visit an authorized service center for further assistance.
 - Keep all adhesive tape, insulating materials, screws, and other removable items in a safe place until the service procedure is completed, as they may be needed during installation.
-

Repair tools



Screwdriver



Plastic blade



Tweezers



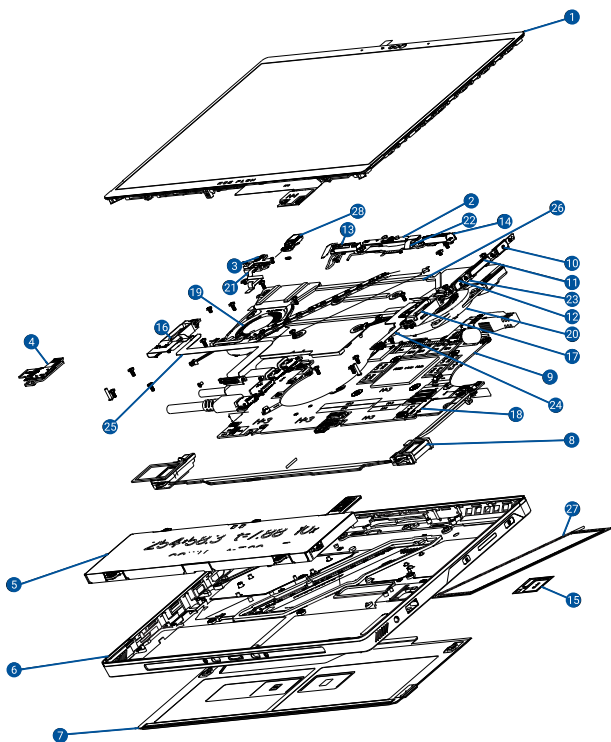
Suction pliers

Diagnostic tools

Use ASUS System Diagnostics after completing any service procedures to ensure that all components are working properly.

For more information, visit www.asus.com/support/FAQ/1048490/.

Major components



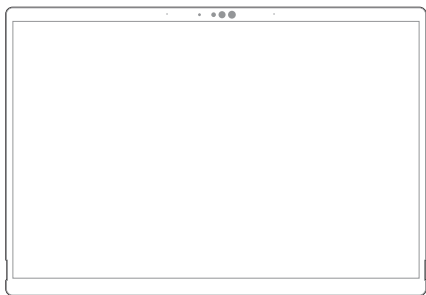
- | | |
|-----------------------------|---------------------------|
| 1. Touch display panel | 15. SSD compartment cover |
| 2. Front camera module | 16. Display hinge (left) |
| 3. Hall sensor board | 17. Display hinge (right) |
| 4. microSD reader board | 18. M.2 SSD module |
| 5. Battery | 19. Fan module (left) |
| 6. Bottom cover | 20. Fan module (right) |
| 7. Kickstand module | 21. Hall sensor cable |
| 8. Speakers | 22. Camera cable |
| 9. Motherboard | 23. Button cable |
| 10. Power button | 24. Audio board cable |
| 11. Volume button | 25. Pogo pin cable |
| 12. Command center button | 26. Heat sink |
| 13. Main antenna cable | 27. Decorative glass |
| 14. Auxiliary antenna cable | 28. Rear camera module |

This image shows a single sheet of white paper with horizontal ruling lines. The lines are evenly spaced and run across the width of the page. There are no margins, text, or other markings on the paper.

Chapter 2:

Service Procedures

Display panel



Before you begin

Read the **Safety Precautions** and complete the **Pre-repair Checklist**.

IMPORTANT!

- Specific tools are required for servicing this component. It is recommended that you contact an authorized service center for assistance.
 - This component is fragile. Damage may occur if the service procedure is performed incorrectly. If you are uncertain about proceeding, stop and contact an authorized service center for assistance.
 - Do not bend the display panel in any way to avoid risk of display panel leakage.
-

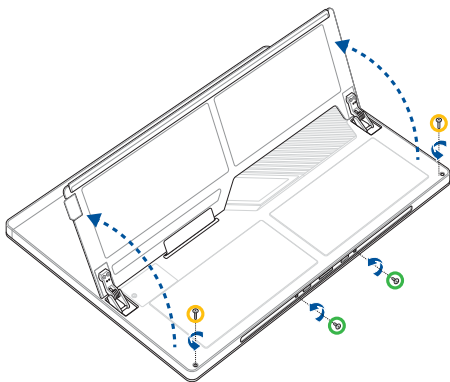
Screw list

- M2.0 X 3.0L (2pcs)
- M2.0 X 10.0L (2pcs)

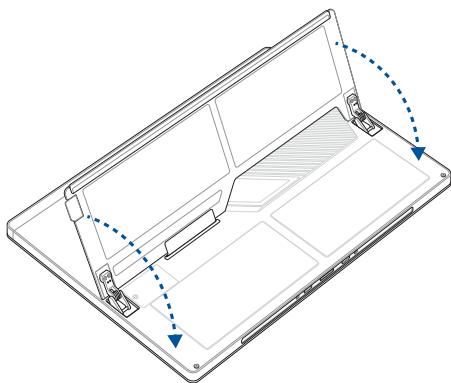
Removal

IMPORTANT! System power will be cut off automatically upon removal of the bottom cover. To restore power, reattach the bottom cover securely and connect the AC power adapter to your Notebook PC after the servicing is complete.

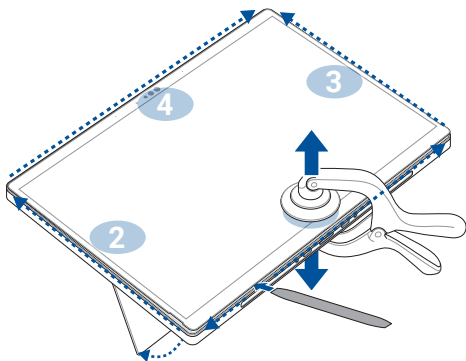
1. Open the kickstand as shown in the illustration below.
2. Remove the screw(s) from the bottom cover.



3. Close the kickstand.



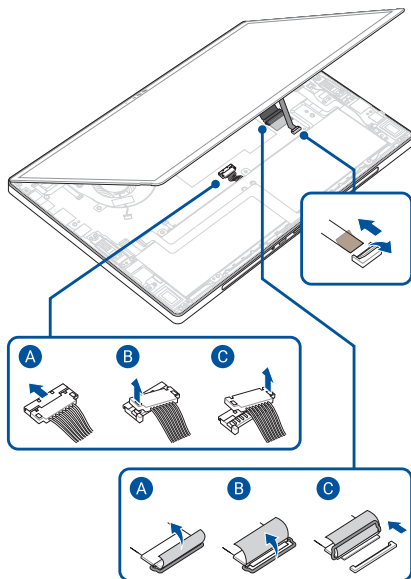
4. Turn over the display panel module, then open the kickstand.
5. Open the suction pliers and securely position the suction cups on both sides of the display panel (not on the kickstand) as shown in the illustration below.
6. Squeeze the handles of the suction pliers to lift and slightly separate the display panel from the bottom cover. Start from the lower part of the display panel and repeat the procedure from side to side in the sequence shown in the illustration below.
7. Use the plastic blade to carefully pry open the indicated area of the bottom cover.



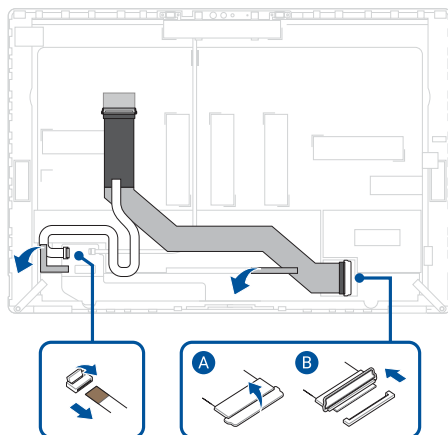
8. Slightly lift the display panel, then disconnect the battery power cable and the touch screen panel cable from the motherboard.

IMPORTANT!

- Disconnect the battery power cable by lifting the side with the red wires first.
 - Serious risk of fire or explosion may occur if the battery is punctured. If you are uncertain about proceeding, stop and contact an authorized service center for assistance.
-

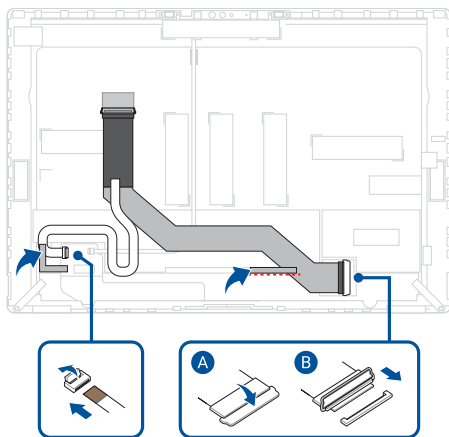


9. Remove the tape.
10. Disconnect the cable(s) from the rear side of the display panel.

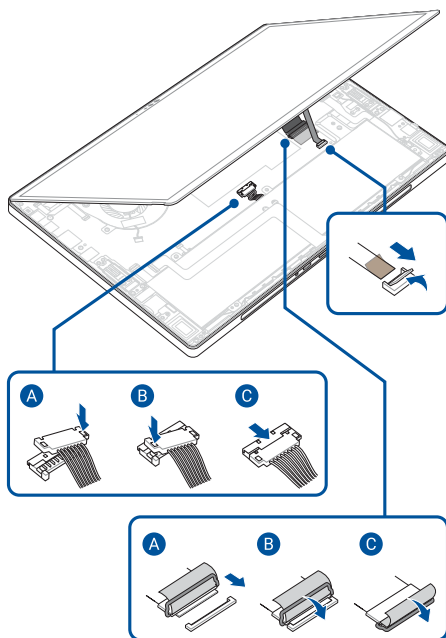


Installation

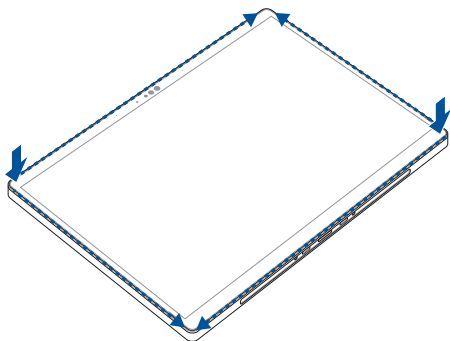
1. Reconnect the cable(s) to the rear side of the display panel.
2. Reattach the tape.



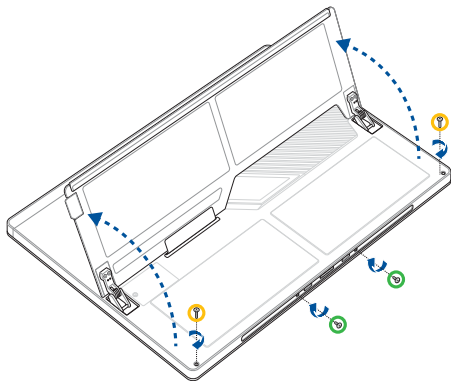
3. Slightly lift the display panel, then reconnect the cable(s) to the motherboard.



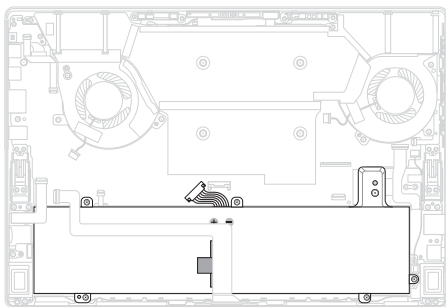
4. Align and install the display panel.



5. Secure the bottom cover using the screw(s) you removed earlier.
6. Install the components you removed in the *Before you begin* section.



Battery



Before you begin

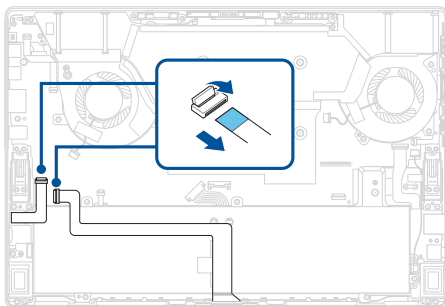
1. Read the **Safety Precautions** and **Pre-repair Checklist**.
2. Remove the display panel.

Screw list

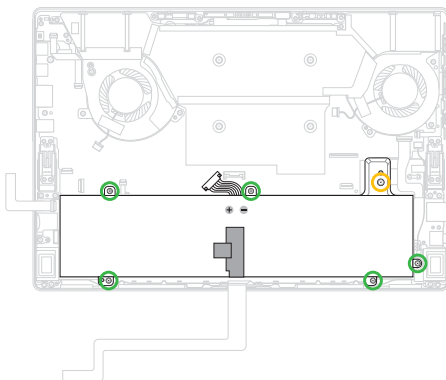
- ⊕ M2.0 X 5.0L (5pcs)
- ⊕ M2.0 X 2.0L (1pc)

Removal

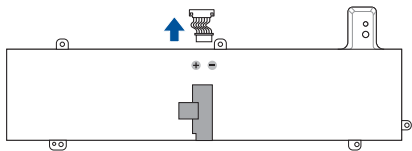
1. Disconnect the cable(s).



2. Remove the screw(s) from the battery.
3. Remove the battery.



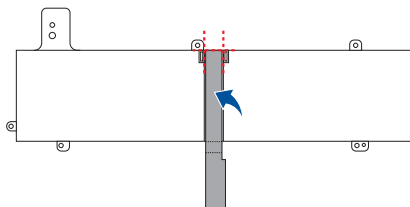
4. Remove the cable from the battery.



Installation

1. Position the battery in the orientation shown, then align and attach the first half of the tape on the battery.

NOTE: This step is only required when you are replacing the existing component with a new one.

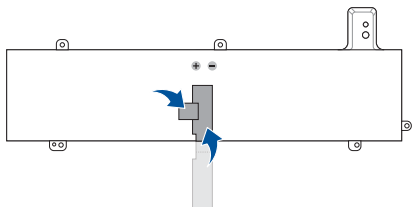


2. Turn over the battery, then attach the other half of the tape on this side of the battery.

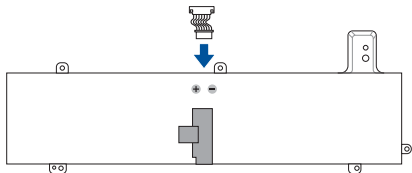
NOTE: This step is only required when you are replacing the existing component with a new one.

3. Attach the smaller piece of tape as shown in the illustration below.

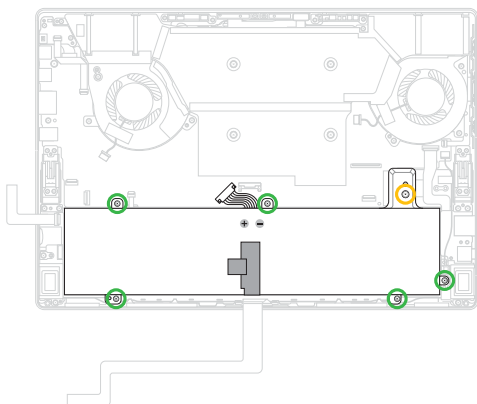
NOTE: This step is only required when you are replacing the existing component with a new one.



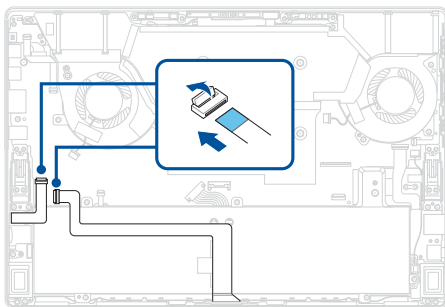
4. Reconnect the battery power cable to the battery.



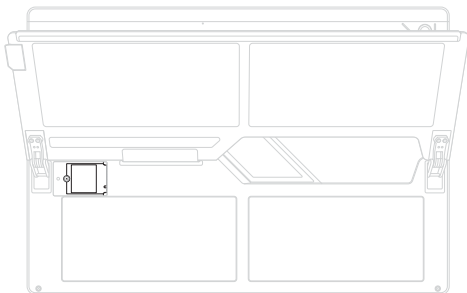
5. Secure the battery using the screw(s) you removed earlier.



6. Reconnect the cable(s).
7. Install the components you removed in the *Before you begin* section.



M.2 SSD module



Before you begin

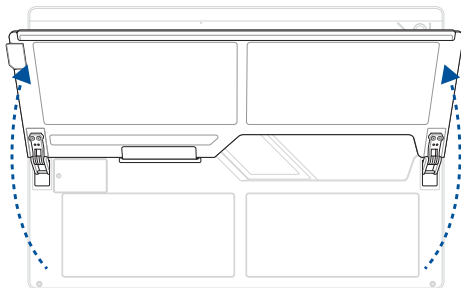
Read the **Safety Precautions** and **Pre-repair Checklist**.

Screw list

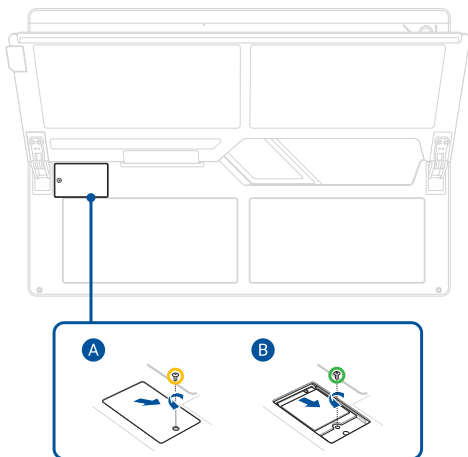
- ⊕ M2.0 X 2.5L (1pc)
- ⊛ M2.0 X 7.0L (1pc)

Removal

1. Open the kickstand.

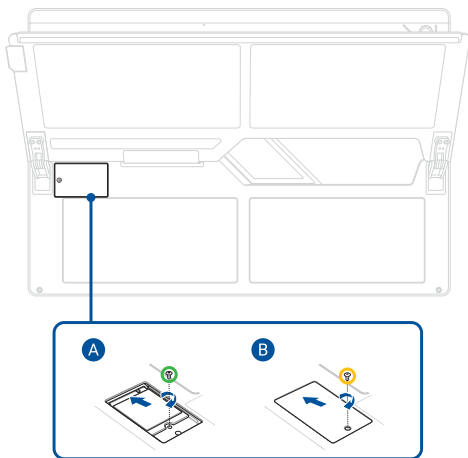


2. Remove the screw to open the compartment cover.
3. Remove the screw, then remove the M.2 SSD module from the motherboard.

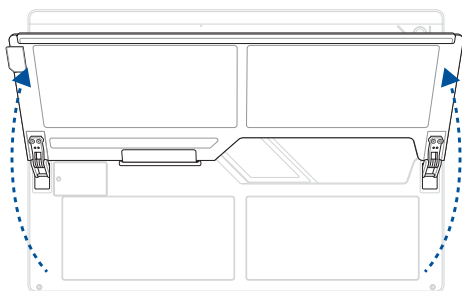


Installation

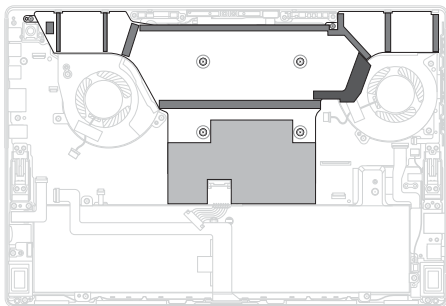
1. Secure the M.2 SSD module to the motherboard using the screw you removed earlier.
2. Secure the compartment cover.



3. Close the kickstand.
4. Install the components you removed in the *Before you begin* section.



Heat sink



Before you begin

WARNING! The heat sink contains liquid metal and should only be removed by authorized service personnel. Significant damage may occur to motherboard components if the heat sink is improperly removed.

IMPORTANT! Thermal paste, thermal pads, liquid metal, or other thermal interface materials must be thoroughly removed and replaced if this component is removed. Ensure that replacement materials are available before proceeding, or contact an authorized service center for assistance.

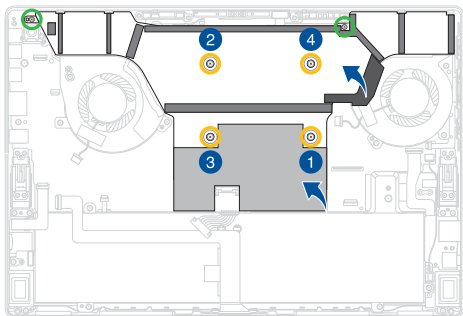
1. Read the **Safety Precautions** and **Pre-repair Checklist**.
2. Remove the display panel and disconnect the battery power cable.

Screw list

- ⊕ M2.0 X 3.0L (2pcs)
- ⊕ Captive screw (4pcs)

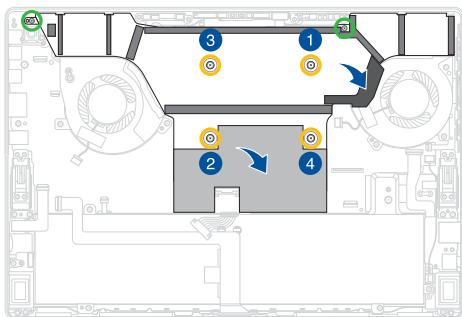
Removal

1. Remove the absorber sheet and the tape.
2. Remove the screw(s) from both ends of the heat sink.
3. Loosen the captive heat sink screw(s) one by one in the sequence shown in the illustration below without removing the screw(s), then remove the heat sink.

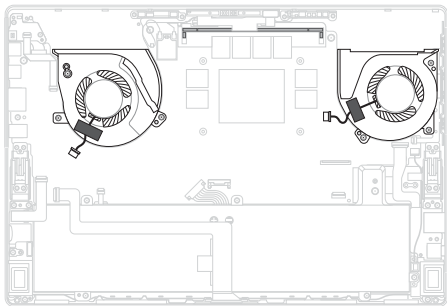


Installation

1. Align and install the heat sink, then secure the captive heat sink screw(s) one by one in the sequence shown in the illustration below.
2. Secure the screw(s) on both ends of the heat sink.
3. Attach the tape and the absorber sheet.



Fan module



Before you begin

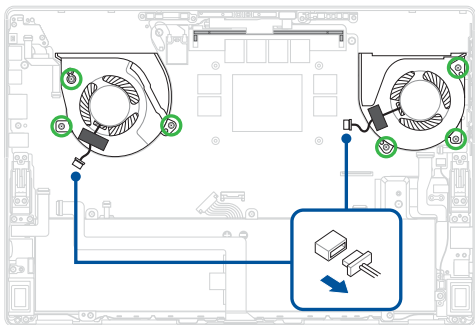
1. Read the **Safety Precautions** and **Pre-repair Checklist**.
2. Remove the display panel and disconnect the battery power cable.
3. Remove the following components:
 - Heat sink

Screw list

- ⊕ M2.0 X 5.0L (6pcs)

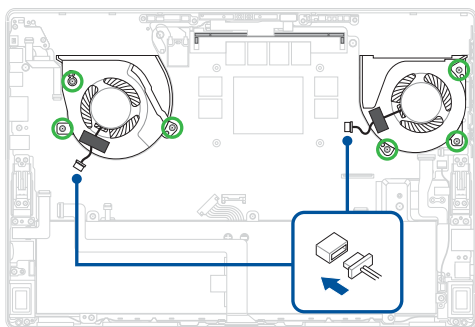
Removal

1. Disconnect the fan connector(s).
2. Remove the screw(s).
3. Remove the fan(s).

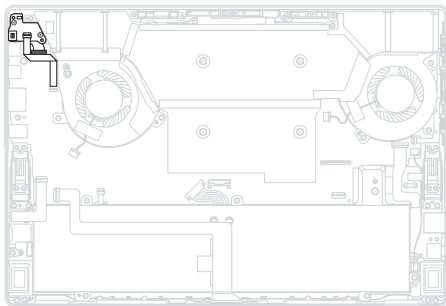


Installation

1. Install the fan(s).
2. Secure the fan(s) using the screw(s) you removed earlier.
3. Reconnect the fan connector(s).
4. Install the components you removed in the *Before you begin* section.



Rear camera module



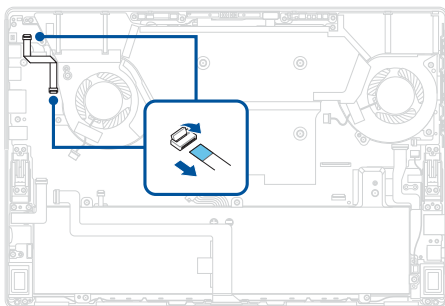
Before you begin

1. Read the **Safety Precautions** and **Pre-repair Checklist**.
2. Remove the display panel and disconnect the battery power cable.

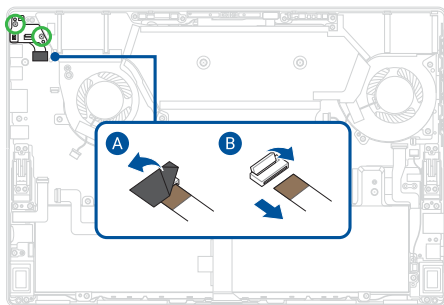
Screw list

- ⊕ M2.0 X 3.0L (2pcs)

1. Disconnect the cable from the motherboard and the rear camera board, then remove the cable.

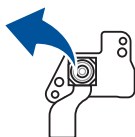


2. Remove the screw(s).
3. Remove the tape, then disconnect the cable.



4. Turn over the rear camera board and remove the camera lens.

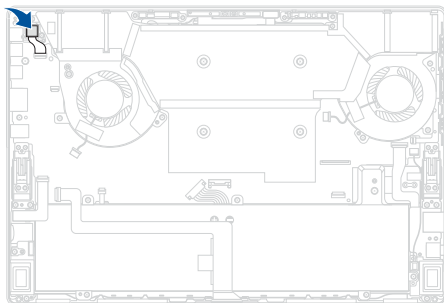
NOTE: This step is only required when you are replacing the existing component with a new one.



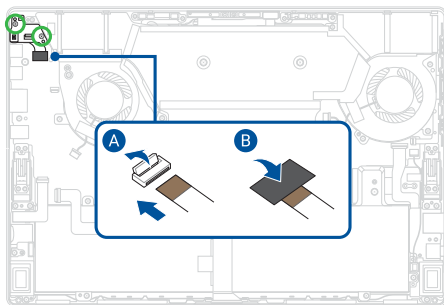
Installation

1. Install the new camera lens.

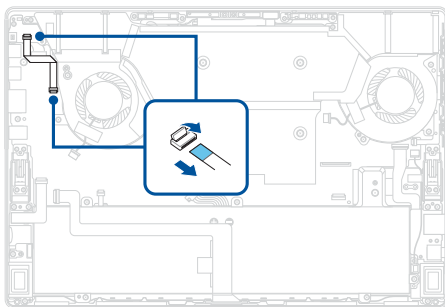
NOTE: This step is only required when you are replacing the existing component with a new one.



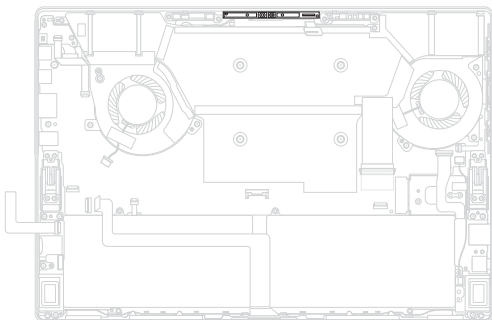
2. Align and install the rear camera board.
3. Secure the rear camera board using the screw(s) you removed earlier.
4. Connect the cable, then attach the tape.



5. Reconnect the cable to the rear camera board and the motherboard.
6. Install the components you removed in the *Before you begin* section.



Camera module



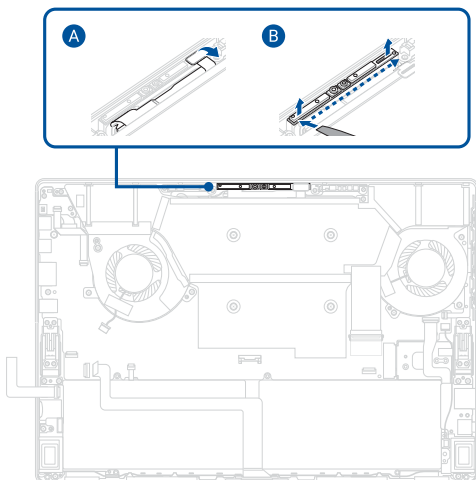
Before you begin

IMPORTANT! This component is fragile. Damage may occur if the service procedure is performed incorrectly. If you are uncertain about proceeding, stop and contact an authorized service center for assistance.

1. Read the **Safety Precautions** and **Pre-repair Checklist**.
2. Remove the display panel and disconnect the battery power cable.

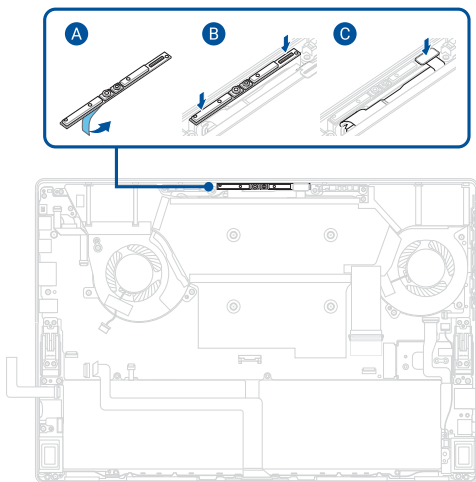
Removal

1. Disconnect the cable from the camera module.
2. Carefully remove the camera module.

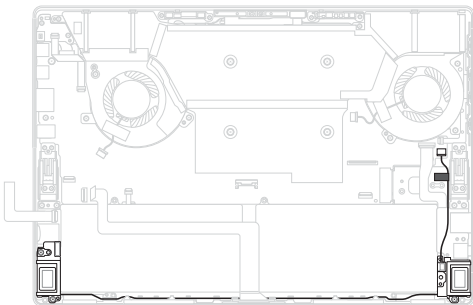


Installation

1. Remove the release liner from the bottom of the new camera module, then install the camera module.
2. Reconnect the cable.
3. Install the components you removed in the *Before you begin* section.



Speakers



Before you begin

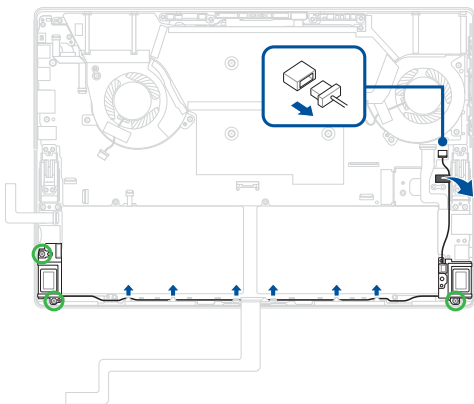
1. Read the **Safety Precautions** and **Pre-repair Checklist**.
2. Remove the display panel and disconnect the battery power cable.
3. Remove the following components:
 - Battery

Screw list

- ⊕ M2.0 X 5.0L (4pcs)

Removal

1. Disconnect the cable from the motherboard, then remove the tape.
2. Remove the screw(s).
3. Remove the speaker cable from the cable guide(s), then remove the speakers.

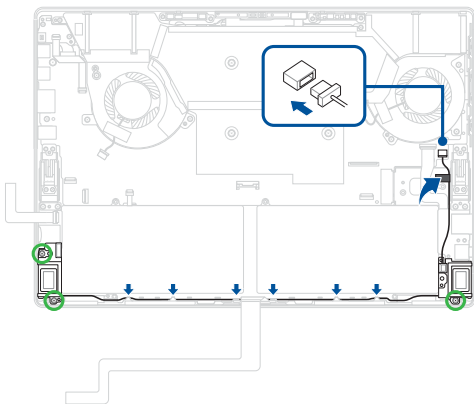


Installation

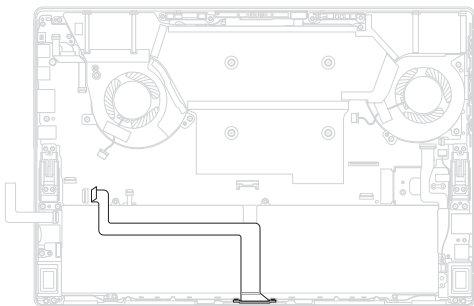
1. Install the speakers.
2. Route the speaker cable through the cable guide(s).

IMPORTANT! Damage may occur if cables are not properly routed through the cable guides. Confirm that all cables are routed through each of the indicated cable guides before proceeding.

3. Secure the speaker using the screw(s) you removed earlier.
4. Reconnect the cable, then reattach the tape.
5. Install the components you removed in the *Before you begin* section.



Pogo pin



Before you begin

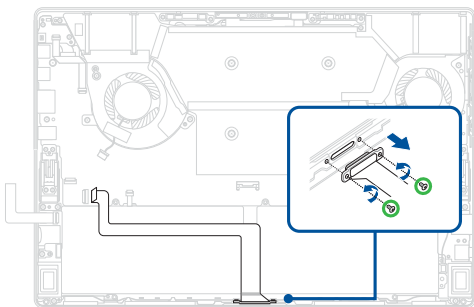
1. Read the **Safety Precautions** and **Pre-repair Checklist**.
2. Remove the display panel and disconnect the battery power cable.
3. Remove the following components:
 - Battery

Screw list

- ⊕ M1.6 X 2.5L (2pcs)

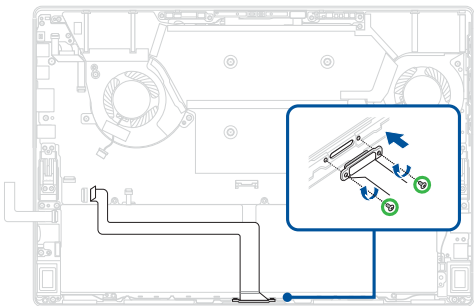
Removal

Remove the screw(s), then remove the pogo pin with the FFC cable connected as shown.

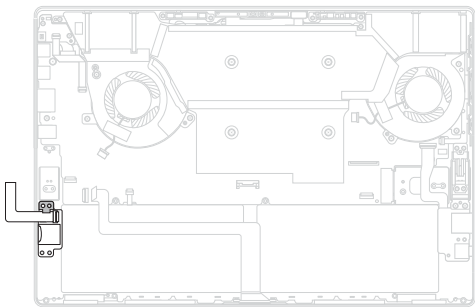


Installation

1. Align and install the pogo pin with the FFC cable connected, then secure it using the screw(s) you removed earlier.
2. Install the components you removed in the *Before you begin* section.



microSD reader board



Before you begin

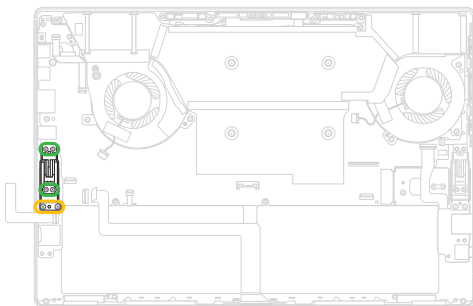
1. Read the **Safety Precautions** and **Pre-repair Checklist**.
2. Remove the display panel and disconnect the battery power cable.
3. Remove the following components:
 - Battery
 - Speaker

Screw list

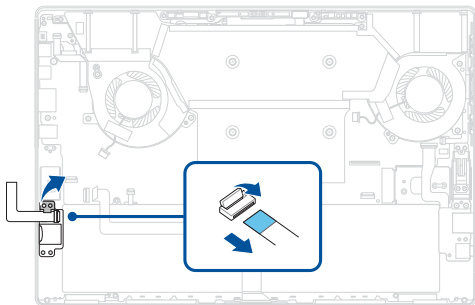
- ⊕ M2.0 X 3.0L (4pcs)
- ⊕ M2.0 X 5.0L (2pcs)

Removal

1. Remove the hinge screw(s) from the left side.

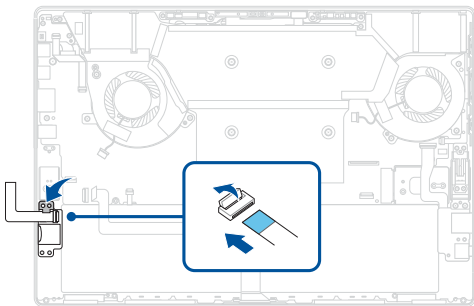


2. Remove the tape.
3. Disconnect the cable from the microSD reader board, then remove the microSD reader board.

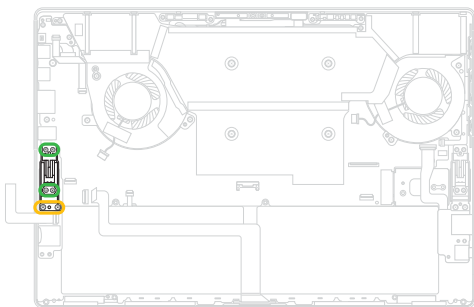


Installation

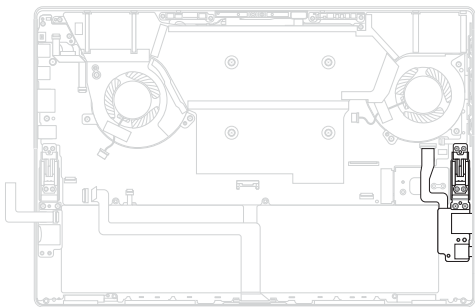
1. Install the microSD reader board, then reconnect the cable to the microSD reader board.
2. Reattach the tape.



3. Secure the hinge on the left side using the screw(s) you removed earlier.
4. Install the components you removed in the *Before you begin* section.



I/O board



Before you begin

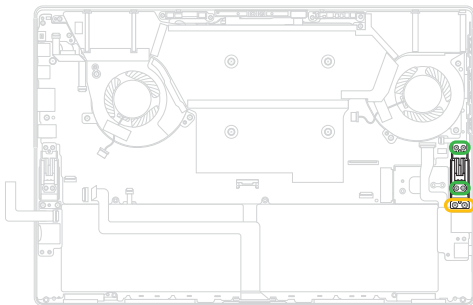
1. Read the **Safety Precautions** and **Pre-repair Checklist**.
2. Remove the display panel and disconnect the battery power cable.
3. Remove the following components:
 - Battery
 - Speaker

Screw list

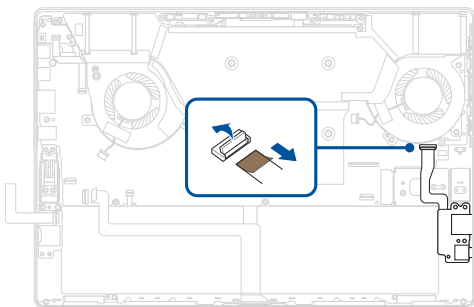
- ⊕ M2.0 X 3.0L (4pcs)
- ⊕ M2.0 X 5.0L (2pcs)

Removal

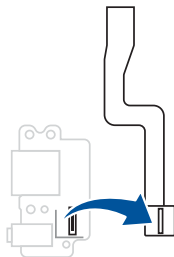
1. Remove the hinge screw(s) from the right side.



2. Disconnect the I/O board cable from the motherboard.

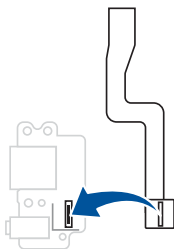


3. Turn over the I/O board, then disconnect and remove the cable.

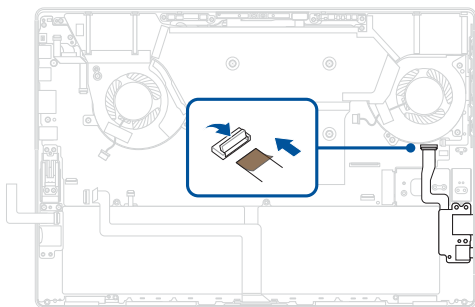


Installation

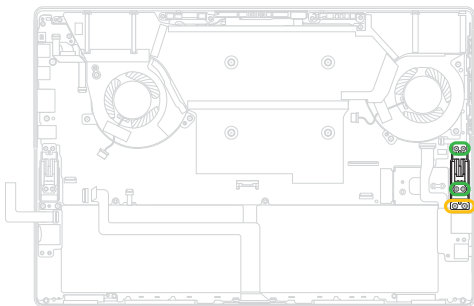
1. Connect the cable to the bottom of the I/O board.



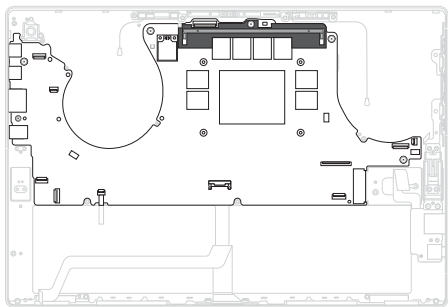
2. Turn over the I/O board, then install the I/O board.
3. Reconnect the I/O board cable to the motherboard.



4. Secure the hinge on the right side using the screw(s) you removed earlier.
5. Install the components you removed in the *Before you begin* section.



Motherboard



Before you begin

1. Read the **Safety Precautions** and **Pre-repair Checklist**.
2. Remove the display panel and disconnect the battery power cable.
3. Remove the following components:
 - Battery
 - M.2 SSD module
 - Heat sink
 - Fan module
 - Rear camera module
 - Speaker

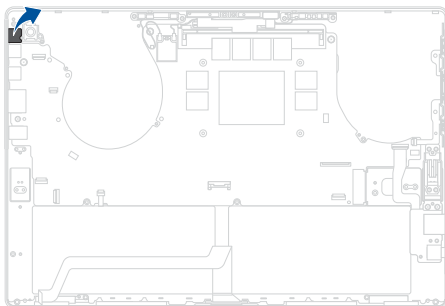
- Pogo pin
- microSD reader board
- I/O board

Screw list

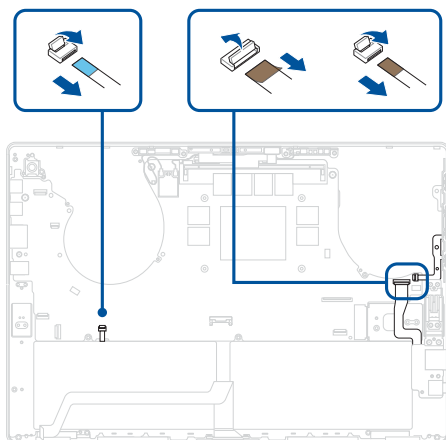
- ⊕ M2.0 X 2.0L (5pcs)
- ⊕ M2.0 X 3.0L (1pc)

Removal

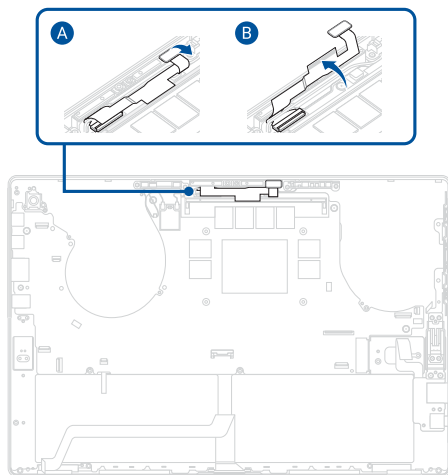
1. Remove the rubber piece.



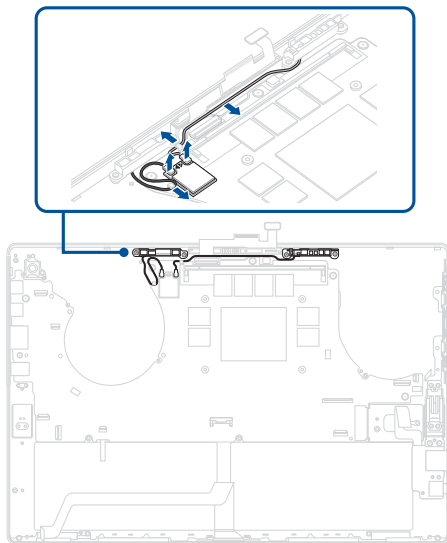
2. Disconnect the cable(s) from the motherboard.



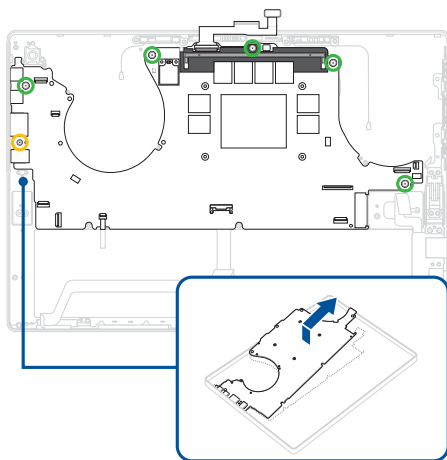
3. Disconnect and lift the camera cable.



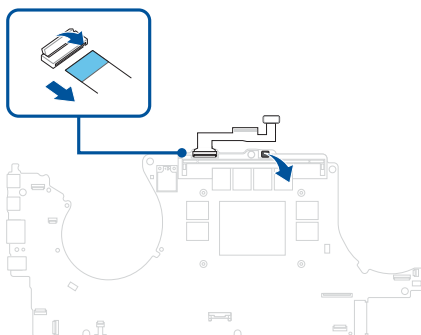
4. Disconnect the antenna cable(s), then remove the antenna cable from the cable guide(s).



5. Remove the screw(s), then remove the motherboard from the chassis as shown in the illustration below.

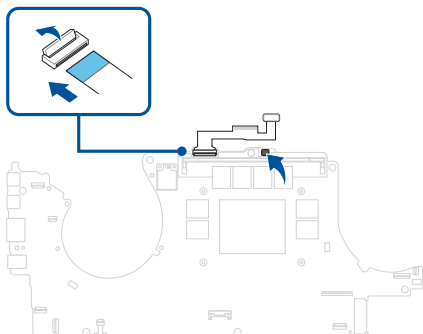


6. Disconnect the cable and remove the rubber piece.

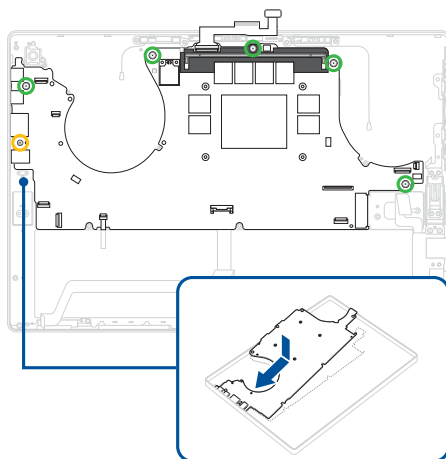


Installation

1. Reconnect the cable and install the rubber piece.

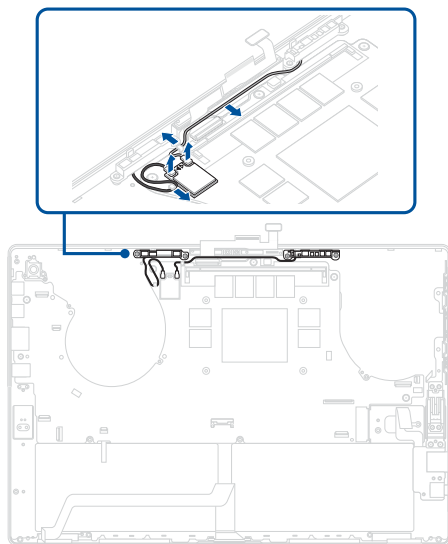


2. Align and install the motherboard as shown in the illustration below, then secure the motherboard using the screw(s) you removed earlier.

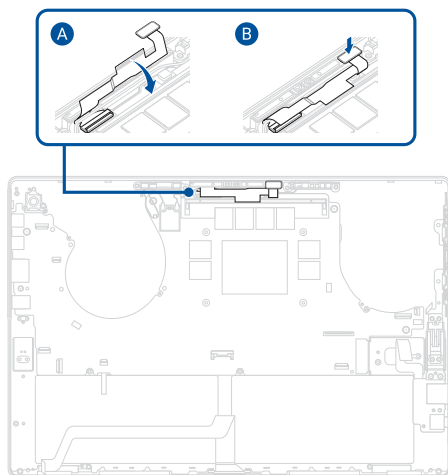


3. Reconnect the antenna cable(s).
4. Route the antenna cable(s) through the cable guide(s).

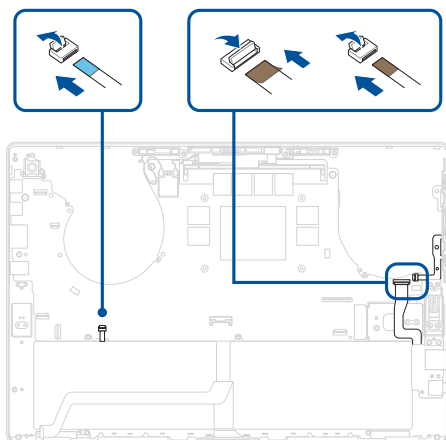
IMPORTANT! Damage may occur if cables are not properly routed through the cable guides. Confirm that all cables are routed through each of the indicated cable guides before proceeding.



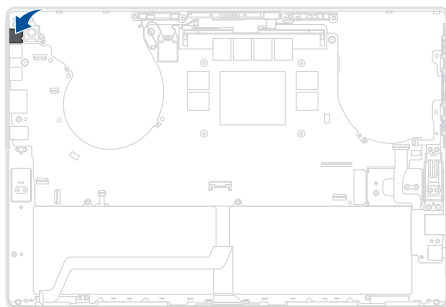
5. Reconnect the camera cable.



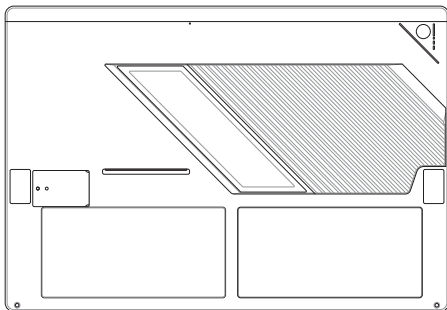
6. Reconnect the cable(s) to the motherboard.



7. Align and install the rubber piece.
8. Install the components you removed in the *Before you begin* section.



Bottom cover



Before you begin

1. Read the **Safety Precautions** and **Pre-repair Checklist**.
2. Remove the display panel and disconnect the battery power cable.
3. Remove the following components:
 - Battery
 - M.2 SSD module
 - Heat sink
 - Fan module
 - Rear camera module
 - Speaker

- Pogo pin
- microSD reader board
- I/O board
- Motherboard

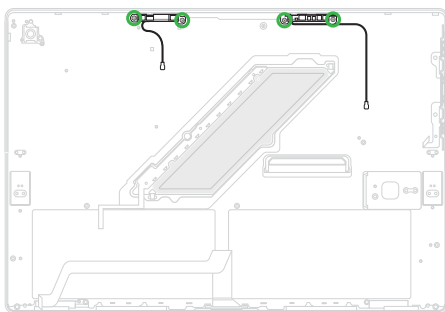
Screw list

- ⊕ M1.6 X 3.0L (4pcs)
- ⊕ M1.6 X 2.5L (4pcs)

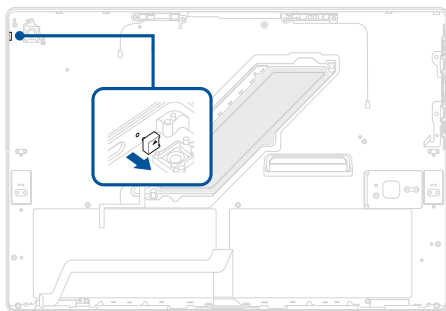
Removal

1. Remove the screw(s), then remove the antenna cable(s).

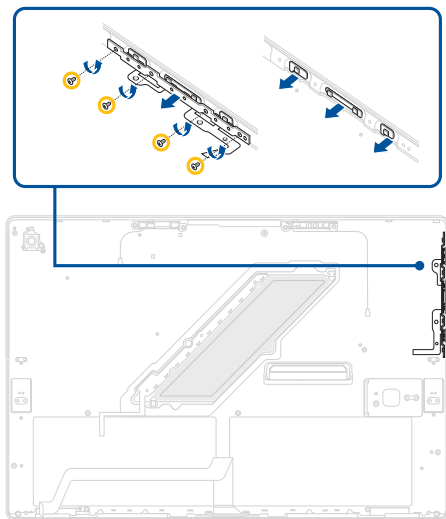
IMPORTANT! The antenna cable(s) cannot be reused once removed.



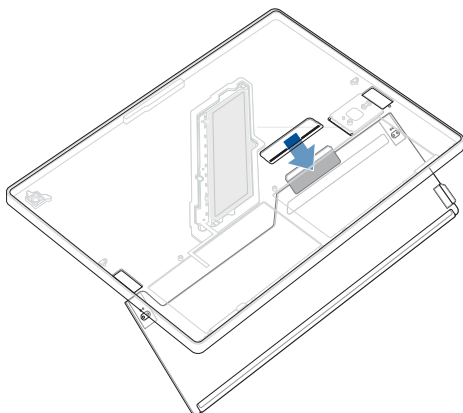
2. Remove the indicator lens.



3. Remove the screw(s), then remove the bracket.
4. Remove the side key(s).

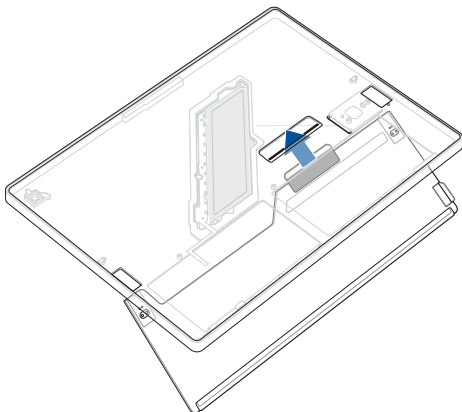


5. Position the bottom cover in the orientation shown and hold the kickstand.
6. Tilt and remove the kickstand from the opening in the bottom cover.

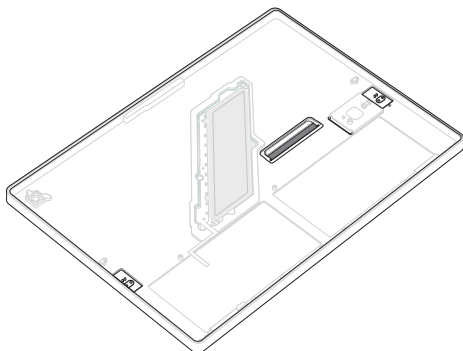


Installation

1. Position the bottom cover in the orientation shown, then tilt and insert the kickstand to the opening in the bottom cover.

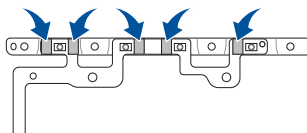


2. Align the kickstand with the bottom cover, then place the bottom cover on a surface to ensure the bottom cover sits securely without any instability.

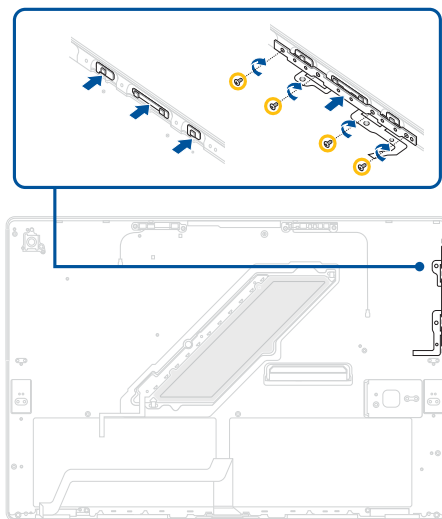


3. Position the new bracket in the orientation shown, then install the sponge piece(s) to the bracket as shown in the illustration below.

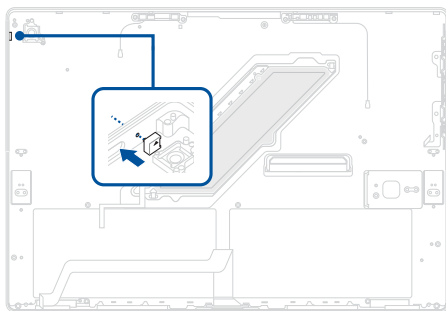
NOTE: This step is only required when you are replacing the existing component with a new one.



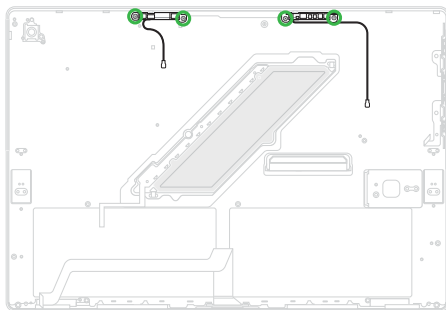
4. Align and install the side key(s).
5. Secure the bracket using the screw(s) you removed earlier.



6. Align and install the indicator lens.



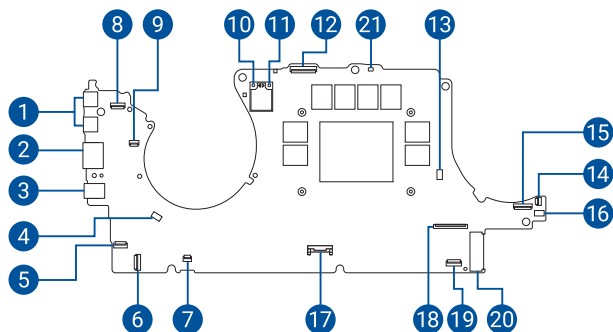
7. Secure the antenna cable(s) using the screw(s) you removed earlier.
8. Install the components you removed in the *Before you begin* section.



[illegible]

Appendices

Wiring and connection diagrams



- | | |
|-----------------------------------|--|
| 1. USB Type-C® connector | 12. Front camera connector |
| 2. HDMI connector | 13. Fan connector (left) |
| 3. Power supply connector | 14. Power button and volume button connector |
| 4. Fan connector (right) | 15. I/O board connector |
| 5. microSD reader board connector | 16. Speaker connector |
| 6. Pogo pin connector | 17. Battery connector |
| 7. LED FPC connector | 18. eDP connector |
| 8. Rear camera connector | 19. Touch screen panel connector |
| 9. Hall sensor PCB connector | 20. SSD connector |
| 10. WLAN connector (Main) | 21. Microphone connector |
| 11. WLAN connector (AUX) | |

This image shows a single sheet of white paper with horizontal ruling lines. The lines are evenly spaced and run across the width of the page. There are no margins, text, or other markings on the paper.