



Dallas **New Introductions**

Summer 2024



FEIZY
— RUGS —



Vancouver 39NRF in Beige/Brown



2024 TRENDS4

REVOLUTION BY FEIZY

Haywood10

FINE

Dyer14

Gia16

Holden18

Livingston20

Lor24

Trinity28

Weston30

LIFESTYLES

Caldwell34

Deja36

Eastfield40

Elias42

Grafton44

Karina46

Kasbah48

Melrose50

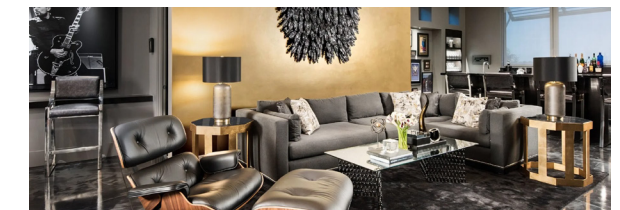
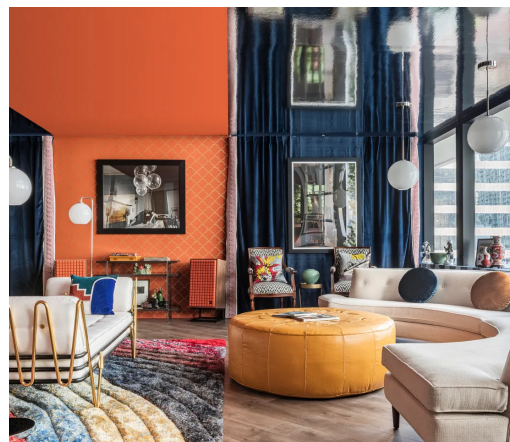
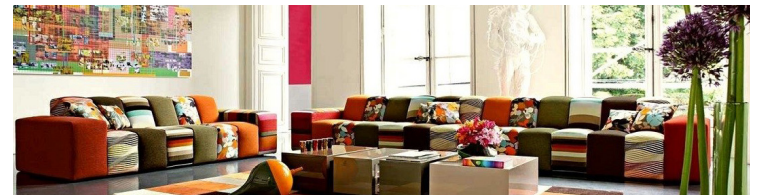
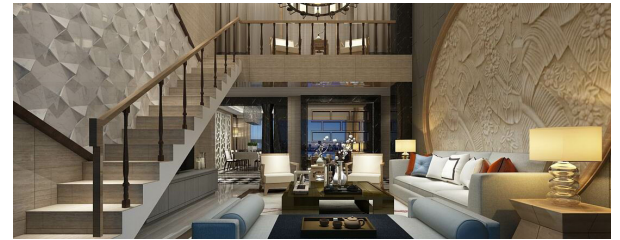
Percy52

Sonora54

Vancouver56

Waldor58

Zarah60



AVANT GARDE

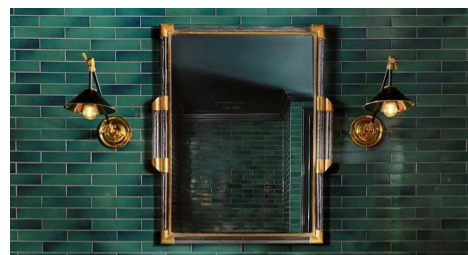
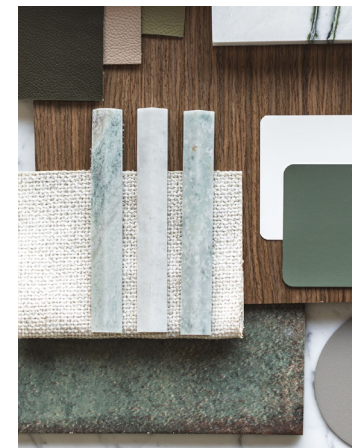
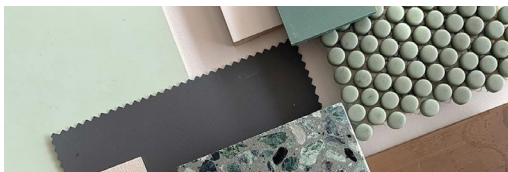
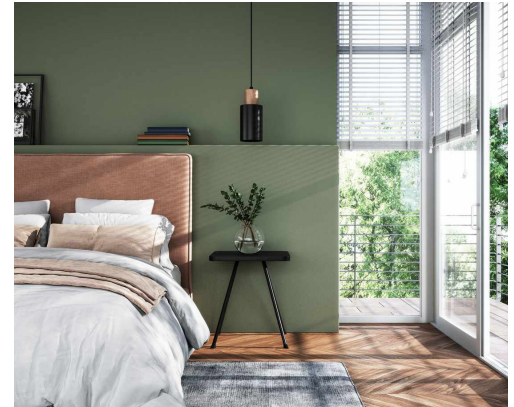
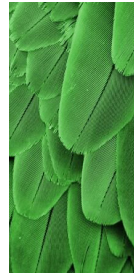
As seen in our Haywood and Trinity Collections

Transform rugs into artful expressions, featuring abstract patterns, watercolor effects, and unique design. From bold and vivid to soft and dreamy colors, these rugs redefine spaces with artistic flair.

GO GREEN

As seen in our Deja, Karina, and Livingston Collections

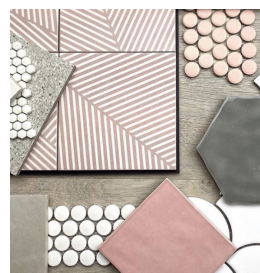
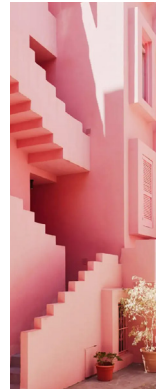
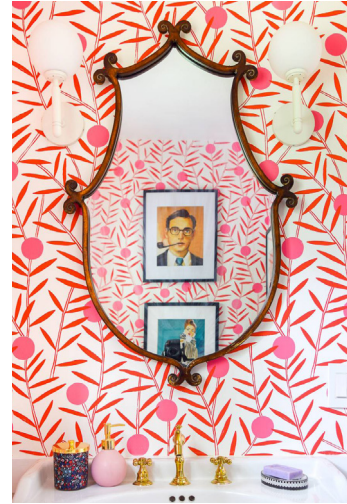
Featuring diverse shades of green, effortlessly harmonize with warm neutrals and natural textures, creating an inviting and balanced atmosphere.

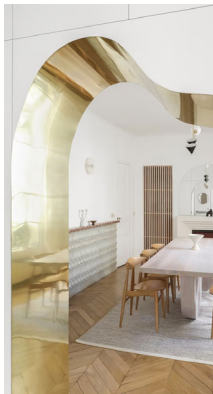
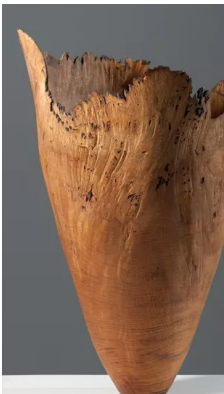


PINK FRENZY

As seen in our Karina and Pryor Collections

Experience modern sophistication with romantic pink hues. Embrace versatile design choices from gentle pastels to vibrant tones.

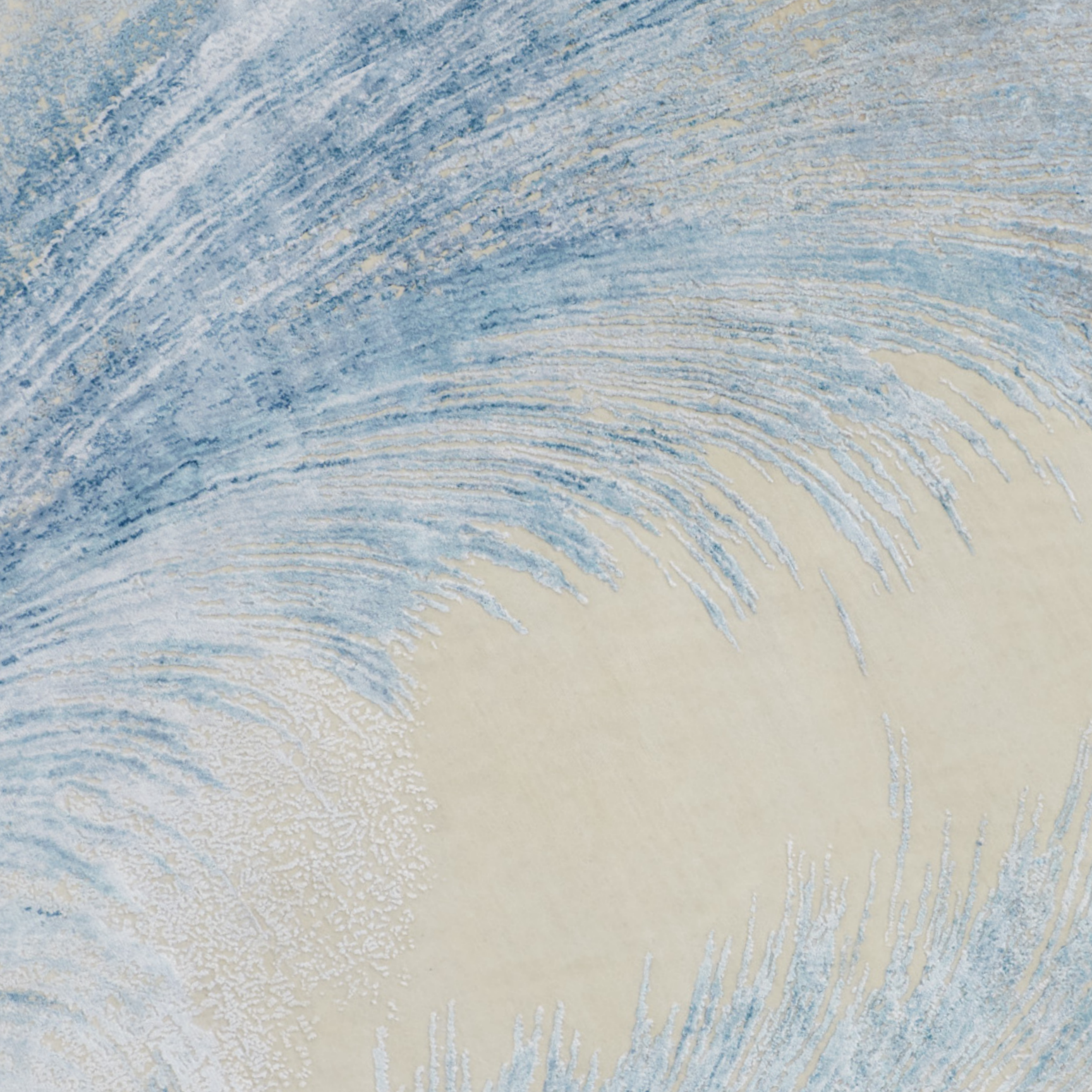


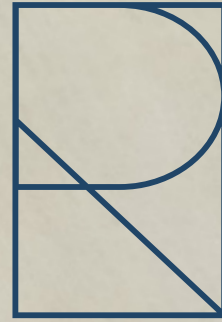


ORGANIC OASIS

As seen in our Eastfield, Grafton, and Vancouver Collections

Infuses nature's essence into spaces, evoking comfort, and familiarity. It blends natural elements for a gentle yet abstract ambiance, featuring warm neutrals, cool blues, and earthy tones.





REVOLUTION
BY FEIZY

HAYWOOD

NEW

Construction	Hand-Knotted
Materials	Wool and Silk
Country	India

Behold the tactile splendor of the Haywood rug, where the softness of hand-spun silk intertwines with the resilience of hand-carded wool. This Indian legacy, woven with the meticulous Persian knot, reveals a cut pile of unparalleled softness. Draped in abstract patterns and hues of taupe, blue, and gold, it offers a whisper of luxury to grace your floors with modern sophistication.

Size (US)

- 2' x 3'
- 3' x 5'
- 4' x 6'
- 5'6" x 8'6"
- 7'9" x 9'9"
- 8'6" x 11'6"
- 9'6" x 13'6"
- 11'6" x 15'
- 2'6" x 10' Runner
- 2'6" x 12' Runner
- 2'6" x 14' Runner
- 8' Round



MAP: 7'9" x 9'9" - \$12,499.00



C6039 Gray/Ivory



Haywood C6039 Gray/Ivory

A close-up photograph of a blue and tan patterned rug. The rug features a complex geometric and floral design in shades of blue, tan, and white. A white border is visible on the left side of the image.

Fine

Rapsody 69C9F in Blue/Gray



DYER

Construction	Hand-Knotted
Materials	Viscose
Country	India

In the Dyer Collection, viscose’s velvety touch harmonizes with a spectrum of modernity. Crafted through high temperature dyeing and the resilient Nepalese knot, these rugs flaunt abstract, distressed designs in a daring palette of gray, red, orange, and ivory. Each piece embodies an eclectic fusion of comfort and vivid expression, designed for the contemporary connoisseur.

Size (US)

- 2' x 3'
- 4' x 6'
- 5'6" x 8'6"
- 7'9" x 9'9"
- 8'6" x 11'6"
- 9'6" x 13'6"
- 11'6" x 15'
- 11'6" x 17'6"
- 2'6" x 10' Runner
- 2'6" x 14' Runner
- 9' Round



MAP: 7'9" x 9'9" - \$7,329.00



NEW ADDITION

69DUF Gray/Rust



NEW ADDITION

69DUF Ivory/Green



NEW ADDITION

69DVF Gray/Multi



Dyer 69DUF in Gray/Rust

GIA

Construction	Hand-Knotted
Materials	Wool & Viscose
Country	India

Dramatic and moody the Gia Collection features vivid hues of sophisticated gray and brooding navy exquisitely accented with exotic notes of auburgine and citrine for an effortless look that feels sublimely opulent. The elegant watercolor - inspired motifs add flow amongst grounded hues while the luminous viscose and wool pile casts a subtle sheen. Captivating this collection is sure to enchant in contemporary modern and eclectic spaces.

Size (US)

- 2' x 3'
- 3' x 5'
- 4' x 6'
- 5'6" x 8'6"
- 7'9" x 9'9"
- 8'6" x 11'6"
- 9'6" x 13'6"
- 11'6" x 15'
- 11'6" x 17'6"
- 2'6" x 8' Runner
- 2'6" x 10' Runner
- 2'6" x 12' Runner
- 8' Round

 CUSTOM READY

MAP: 7'9" x 9'9" - \$7,999.00



NEW ADDITION

69DQF Gray/Purple



NEW ADDITION

69DRF Gray/Multi



NEW ADDITION

69DTF Gray/Blue



Gia 69DQF in Gray/Purple

HOLDEN

NEW

Construction	Hand-Knotted
Materials	Wool
Country	India

The Holden Collection is a blend of tradition and modernity. Hand-knotted in India from premium wool, these rugs are more than just floor coverings. They are pieces of art. The pot-dyeing process reveals a spectrum of subtle hues, while the Persian knots bring to life intricate patterns. The modern, abstract designs are inspired by fine art, creating a visual appeal that adds a touch of elegance to your space.

Size (US)

- 2' x 3'
- 3' x 5'
- 4' x 6'
- 5'6" x 8'6"
- 7'9" x 9'9"
- 8'6" x 11'6"
- 9'6" x 13'6"
- 11'6" x 15'
- 11'6" x 17'6"
- 2'6" x 8' Runner
- 2'6" x 10' Runner
- 2'6" x 12' Runner
- 8' Round



CUSTOM READY

MAP: 7'9" x 9'9" - \$11,107.00



69EIF Ivory/Multi



69CLF Gray/Ivory



69CNF Beige



69CNF Blue/Gray



69CPF Gray/Multi



Holden 69EIF Ivory/Mutli

LIVINGSTON

NEW

Construction	Hand-Knotted
Materials	Wool and Silk
Country	India

The Livingston Collection, a harmonious blend of premium Indian wool and exquisite silk. Hand-knotted with precision, these rugs exude a natural plushness and a lustrous finish. Embrace the modern art-inspired style, where a canvas of serene blues, elegant ivories, verdant greens, soft grays, and warm rusts creates a visual feast for your living space.

Size (US)

- 2' x 3'
- 3' x 5'
- 4' x 6'
- 5'6" x 8'6"
- 7'9" x 9'9"
- 8'6" x 11'6"
- 9'6" x 13'6"
- 11'6" x 15'
- 2'6" x 8' Runner
- 2'6" x 10' Runner
- 2'6" x 12' Runner
- 8' Round



CUSTOM READY

MAP: 7'9" x 9'9" - \$10,399.00



69D5F Gray/Rust



69D6F Charcoal/Rust



69D7F Blue/Multi



Livingston 69D5F in Gray/Rust



69D9F Gray/Charcoal



69DBF Ivory/Multi



69DGF Gray



69DAF Blue Gray/Multi



69DCF Gray/Green



69DHF Beige/Blue



Livingston 69DBF in Ivory/Multi

LOR

Construction	Hand-Knotted
Materials	Wool and Viscose
Country	India

The Lor Collection emerges as a pinnacle of rug craftsmanship, marrying the art of hand knotting with the unmatched softness of New Zealand wool and viscose. Each rug, with its hand-spun yarns, invites touch with its rich texture, further refined by delicate hand carving. This collection redefines modern elegance, offering a subtle yet striking addition to any space.

Size (US)

- 2' x 3'
- 3' x 5'
- 4' x 6'
- 5'6" x 8'6"
- 7'9" x 9'9"
- 8'6" x 11'6"
- 9'6" x 13'6"
- 11'6" x 15'
- 2'6" x 8' Runner
- 2'6" x 10' Runner
- 2'6" x 12' Runner
- 9' Round



MAP: 7'9" x 9'9" - \$7,099.00



NEW ADDITION

69ETF Olive/Rust



NEW ADDITION

69EUF Blue/Silver



NEW ADDITION

69EUF Silver



NEW ADDITION

69EWF Silver/Gray



NEW ADDITION

69EYF Blue/Silver



NEW ADDITION

69EVF Silver/Gray



NEW ADDITION

69EWF Silver



Lor 69EUF in Blue/Silver



NEW ADDITION

69EZF Silver/Blue



NEW ADDITION

69F1F Blue/Silver



NEW ADDITION

69F3F Silver/Blue



NEW ADDITION

69F0F Blue/Silver



NEW ADDITION

69F2F Beige/Silver



NEW ADDITION

69F4F Beige/Multi



NEW ADDITION

69F5F Blue



NEW ADDITION

69F6F Gray/Beige



Lor 69F4F in Beige/Multi

TRINITY

NEW

Construction Hand-Knotted
Materials Wool and Silk
Country India

Each rug, hand-knotted from the premium grade Indian wool and silk, is a testament to traditional techniques perfected since the 16th century. The meticulous hand-spinning, carding, and shearing processes ensure a plush, uniform texture. Embrace the modern art-inspired design, rich hues, and durable elegance that this collection brings to your space.

Size (US)

- 2' x 3'
- 3' x 5'
- 4' x 6'
- 5'6" x 8'6"
- 7'9" x 9'9"
- 8'6" x 11'6"
- 9'6" x 13'6"
- 11'6" x 15'
- 2'6" x 8' Runner
- 2'6" x 10' Runner
- 2'6" x 12' Runner
- 8' Round



MAP: 7'9" x 9'9" - \$10,599.00



69CTF Blue



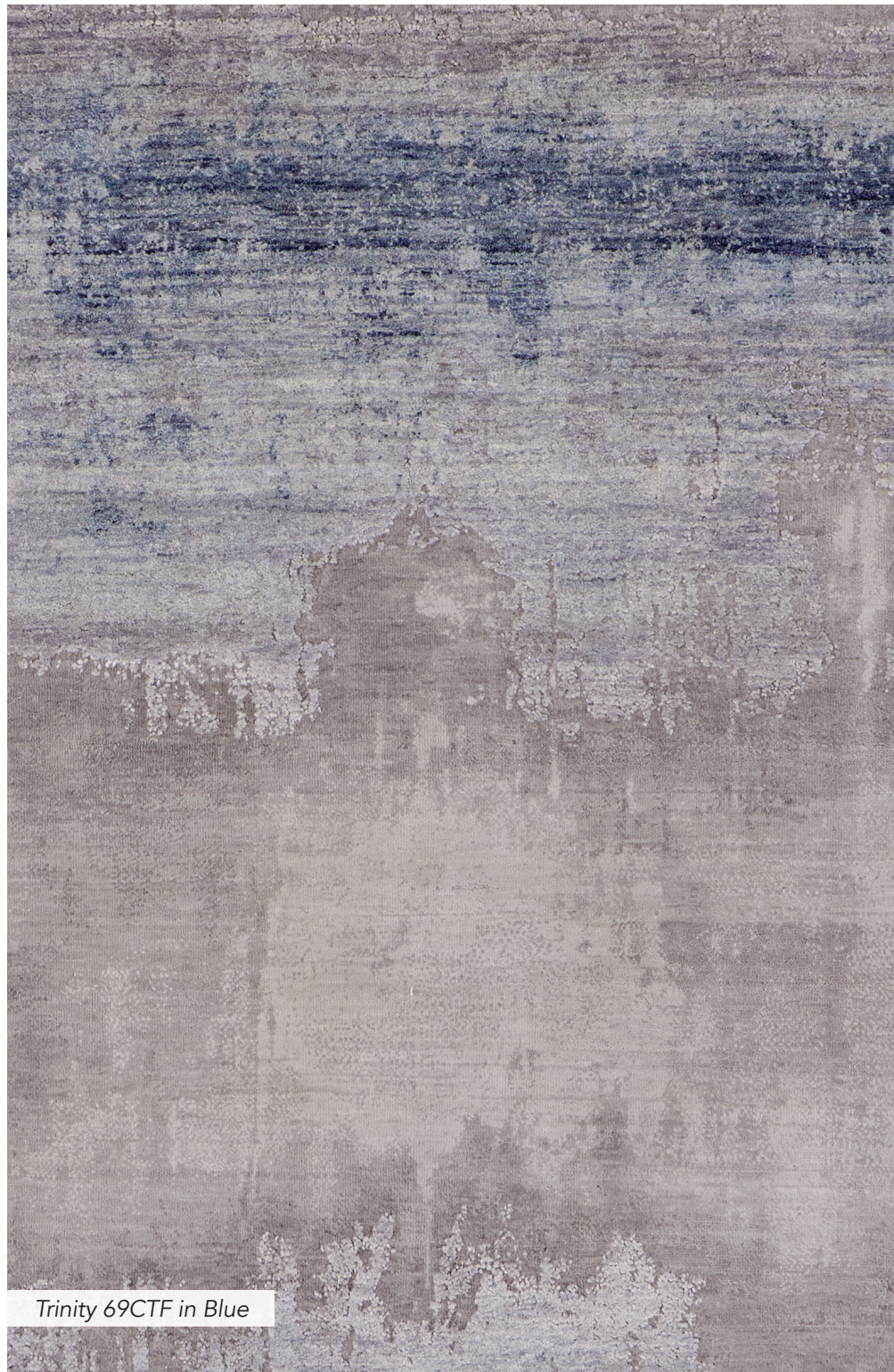
69CUF Beige/Blue



69CWF Gray/Multi



69CXF Gray/Rust



Trinity 69CTF in Blue

WESTON

NEW

Construction	Hand-Knotted
Materials	Wool and Silk
Country	India

The modern mastery of the Weston Collection interlaces premium Indian wool with lustrous silk, hand-knotted by artisans employing ancient Persian techniques for a sumptuous, resilient weave. The palette—whispers of gray, ivory, and subtle gold—dances across modern designs, promising a sophisticated ambiance. Experience unparalleled craftsmanship, accessible luxury, and a statement in style.

Size (US)

- 2' x 3'
- 3' x 5'
- 4' x 6'
- 5'6" x 8'6"
- 7'9" x 9'9"
- 8'6" x 11'6"
- 9'6" x 13'6"
- 11'6" x 15'
- 2'6" x 8' Runner
- 2'6" x 10' Runner
- 2'6" x 12' Runner
- 8' Round



MAP: 7'9" x 9'9" - \$11,099.00



69CZF Gray/Charcoal



69D0F Ivory/Gold



69D1F Beige/Multi



69D3F Beige/Gold



69D4F Green/Multi



69D1F Blue/Gray



Weston 69CZF in Gray/Charcoal



Lifestyle

Grafton 69F8F in Brown



CALDWELL

Construction	Hand-woven
Materials	Wool and Viscose
Country	India

The pleasing melange of tonality and sheen is primarily what draws you in...then a beautiful arrangement of rustic Persian elements emerge. Employing a somewhat pointillistic approach, Caldwell takes an adept use of weaving to simultaneously erase, yet reveal the pattern existing within the skillfully-placed light and dark yarn systems. Point-by-point with warp and weft , Caldwell is a studied complexity that makes for effortless home design.

Size (US)

- 2' x 3'
- 3'6" x 5'6"
- 5' x 7'6"
- 7'6" x 9'6"
- 9' x 12'
- 10' x 14'

 SELECT CUSTOM SIZING AVAILABLE

MAP: 7'6" x 9'6" - \$949.00



NEW ADDITION

8976F Ivory



NEW ADDITION

8977F Orange/Ivory



NEW ADDITION

8978F Ivory/Multi



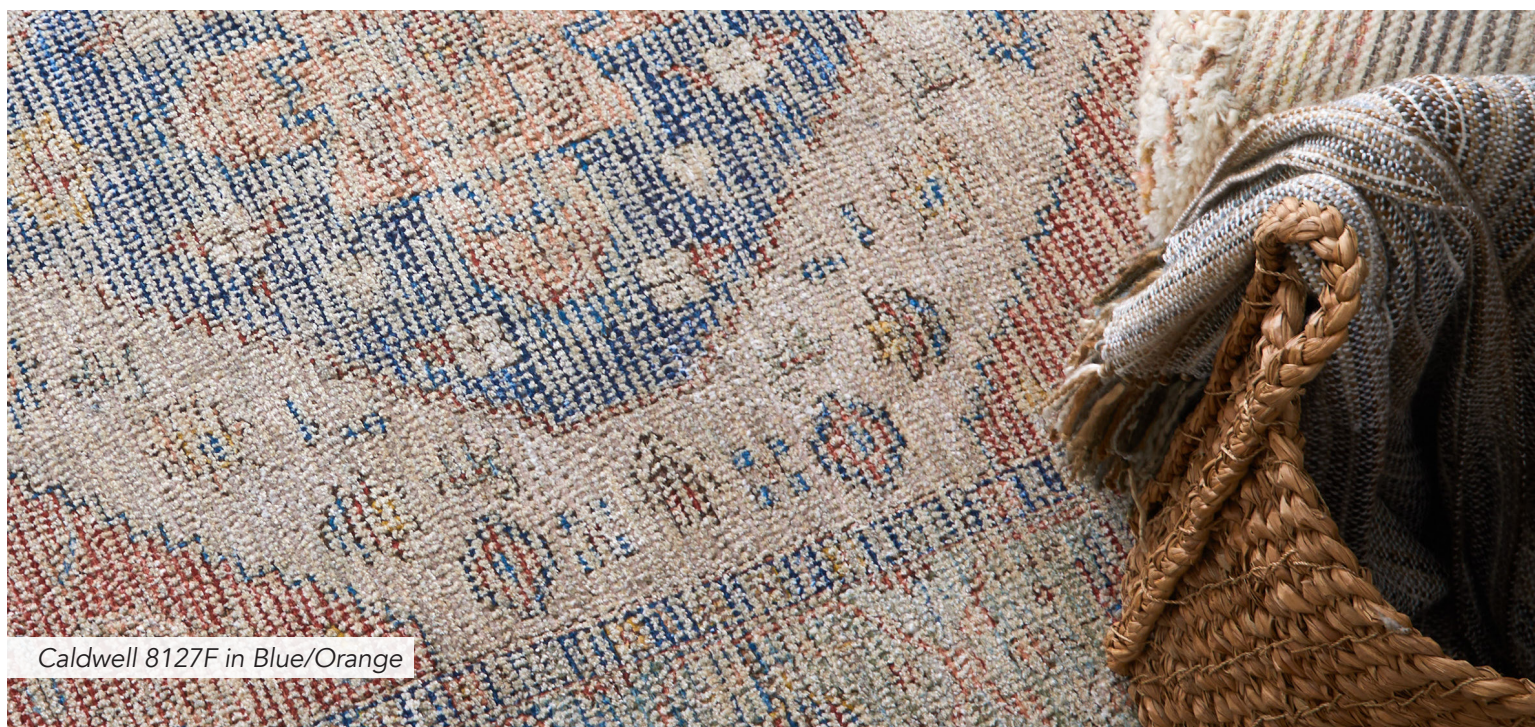
NEW ADDITION

8979F Blue/Multi



NEW ADDITION

8980F Ivory/Blue



Caldwell 8127F in Blue/Orange

DEJA

NEW

Construction	Machine-made
Materials	Polypropylene, Polyester and Viscose
Country	Turkey

Unearth the Deja Collection, a Turkish masterpiece marrying resilience and comfort. The rugs, a canvas of alternating pile heights, create a tactile sonnet underfoot. Abstract motifs, inspired by the rhythm of textiles and menswear, narrate tales of modernity. With inherent resistance to life’s little spills, these rugs are the silent sentinels of your living space.

Size (US)

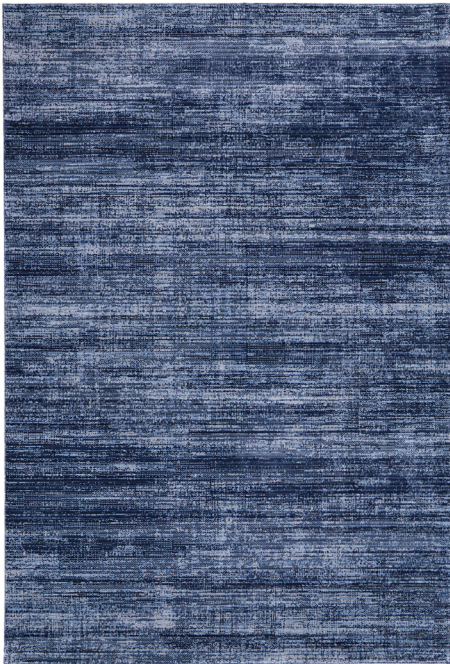
- 2' x 3'
- 5'x 7'6"
- 6'7" x 9'6"
- 7'10" x 10'3"
- 9' x 12'8"
- 2'6" x 7'3" Runner

 SELECT CUSTOM
SIZING AVAILABLE

MAP: 7'10" x 10'3" - \$699.00



39JPF Beige



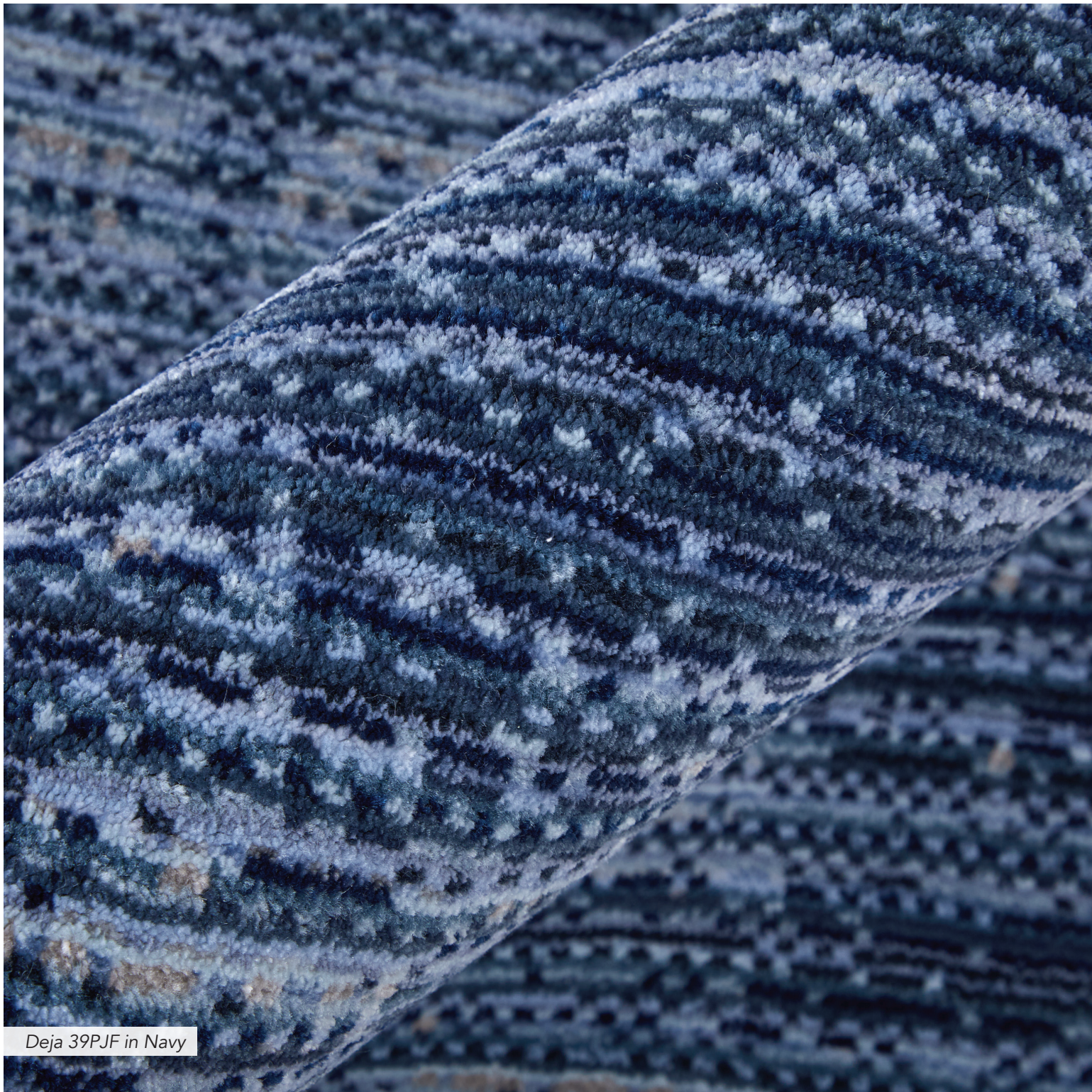
69JPF Blue



39JPF Charcoal



Deja 39PJF in Beige



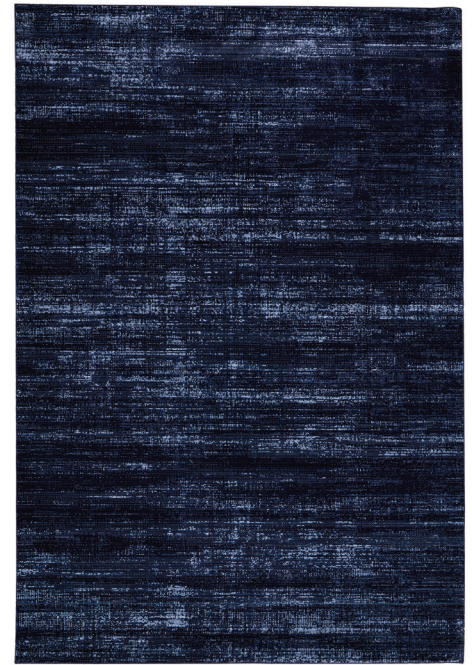
Deja 39PJF in Navy



39PKF Dark Taupe



39PJF Green



39JPF Navy



39PJF Gray



39PJF Light Blue



39PJF Terracotta

EASTFIELD

Construction	Hand-woven
Materials	Wool and Viscose
Country	India

Bask in the subtle opulence of the Eastfield Collection, where the hand-loomed blend of viscose and Mediterranean wool creates an inviting softness. Gold and ivory hues interlace in modern, distressed designs, offering the look and feel of a hand-knotted rug, yet astoundingly affordable. This rug’s artisanal heritage and hand-finished touches promise to infuse your space with a serene, luxurious ambiance.

Size (US)

- 2' x 3'
- 3' x 5'
- 4' x 6'
- 5' x 8'
- 8' x 10'
- 9' x 12'
- 10' x 14'
- 12' x 15'
- 2'6" x 8' Runner
- 2'6" x 10' Runner
- 2'6" x 12' Runner
- 2'6" x 14' Runner
- 8' Round

MAP: 8' x 10' - \$3,399.00



NEW ADDITION

69FPF Gold/Ivory



NEW ADDITION

69FQF Gold/Ivory



NEW ADDITION

69FRF Gold/Ivory



NEW ADDITION

69FTF Gold/Ivory



Eastfield 69FPF in Gold/Ivory

ELIAS

Construction	Hand-woven
Materials	Viscose and Wool
Country	India

The Elias Collection, imported from India, showcases the beauty of a wool and viscose blend in rugs that are as durable as they are beautiful. With a hand-cut pile set against a flatwoven base, these rugs offer a unique texture and pattern that enrich any space. The collection’s modern, eclectic, and casual style, combined with its sophisticated color palette, makes it a versatile choice for enhancing your home.

Size (US)

- 2' x 3'
- 3'6" x 5'6"
- 5'x 8'
- 8' x 10'
- 9' x 12'
- 10' x 14'
- 12' x 15'
- 2'9" x 8' Runner
- 2'9" x 10' Runner



MAP: 8' x 10' - \$2,099.00



NEW ADDITION

69FVF Ivory/Gray



NEW ADDITION

69FWF Ivory/Blue



NEW ADDITION

69FXF Gray/Ivory



NEW ADDITION

69FYF Green/Gray



Elias 69FVF in Ivory/Gray

GRAFTON

NEW

Construction	Hand-Knotted
Materials	Wool
Country	India

Immerse yourself in the Grafton Collection’s legacy, where Indian craftsmanship meets a dance of colors. Each rug, with its hand-carded Afghan wool, boasts a unique abrash effect, celebrating the art of hand-spinning and dyeing. The subtle high-low texture and comforting pile transform your room into a canvas of traditional elegance, adorned with tribal-inspired Oushak patterns in a serene palette of browns, blues, and grays.

Size (US)

- 2' x 3'
- 3'6" x 5'6"
- 5'6" x 8'6"
- 7'9" x 9'9"
- 8'6" x 11'6"
- 9'6" x 13'6"
- 11'6" x 15'



MAP: 7'9" x 9'9" - \$2,431.00



69F8F Brown



69F9F Light Silver



69FLF Ivory/Multi



69FMF Blue/Gray



69FNF Gray/Green



Grafton 69F8F in Brown

KARINA

Construction	Hand-knotted
Materials	Wool
Country	India

Introducing the Karina Collection, a testament to the timeless beauty of traditional rug-making. Crafted in India with a blend of New Zealand wool, these rugs are a symphony of color, pattern, and texture. Through meticulous processes like mill carding and Turkish knot weaving, each piece in the Karina Collection embodies the pinnacle of craftsmanship and design. Adorn your space with the rich, saturated hues and intricate patterns of Karina, where every rug tells a story of heritage and artistry.

Size (US)

- 2' x 3'
- 5'6" x 8'6"
- 7'9" x 9'9"
- 8'6" x 11'6"
- 9'6" x 13'6"
- 12' x 15'
- 2'6" x 8' Runner



MAP: 7'9" x 9'9" - \$3,249.00



NEW ADDITION

69G4F Rust/Gray



NEW ADDITION

69G5F Beige/Gray



NEW ADDITION

69G6F Beige/Blue



NEW ADDITION

69G7F Ivory/Green



NEW ADDITION

69G9F Ivory/Gray



NEW ADDITION

69G7F Ivory/Blue



NEW ADDITION

69G8F Ivory/Multi



NEW ADDITION

69GBF Gray/Multi

KASBAH

NEW

Construction	Hand-knotted
Materials	Wool
Country	India

Delve into the Kasbah Collection, a luxurious fusion of imported Ghazni wool and artisanal craftsmanship. Hand-knotted with precision, each rug boasts a softness enhanced by double washing and hand shearing. Persian knots reveal detailed patterns in a warm palette of ivory, tan, beige, and orange, embodying transitional, bohemian elegance.

Size (US)

- 2' x 3'
- 5'6" x 8'6"
- 7'9" x 9'9"
- 8'6" x 11'6"
- 9'6" x 13'6"

 SELECT CUSTOM
SIZING AVAILABLE

MAP: 7'9" x 9'9" - \$3,507.00



69FZF Gray/Multi



69G0F Beige/Multi



69G1F Beige/Multi



69G2F Beige/Multi



69G3F Beige/Gray



Kasbah 69FZF in Gray/Multi

MELROSE

NEW

Construction	Machine-made
Materials	Polypropylene, Polyester and Viscose
Country	Turkey

Adorn your floors with the Melrose Collection’s unique blend of modern and traditional, showcasing distressed, floral, and Oushak designs for a touch of refined sophistication. Transform your living space with a palette of captivating colors including blue, green, taupe, ivory, and red, each contributing to the rug’s enchanting allure. Experience the legacy of timeless Turkish craftsmanship.

Size (US)

- 2' x 3'
- 5' x 7'6"
- 6'7" x 9'6"
- 7'10" x 10'3"
- 9' x 12'8"
- 2'6" x 7'3" Runner



MAP: 7'10" x 10'3" - \$699.00



39NZF Ivory/Green



39NZF Ivory/Rust



39P0F Ivory/Multi



39P2F Gray/Rust



39P4F Blue/Multi



39P1F Ivory/Multi



39P3F Green/Ivory



39P5F Beige/Multi

PERCY

Construction	Machine-made
Materials	Polyester
Country	Turkey

A dazzling display of the most intricately crafted carpets from all over the world, the Percy Collection boasts the breath-taking appearance of antique authenticity in each design. Silken shades of tradition in indigo, rust, cream, and black mingle with the more brilliant and bold magenta, gold, and aqua to create a collection that appears to be procured from an exotic bazaar. An opulent aesthetic with superior styling, Percy is the answer to today’s need for affordable luxury in the home.

Size (US)

- 2' x 3'
- 4' x 6'
- 5'3" x 7'6"
- 7'10" x 9'10"
- 9'2" x 12'

 SELECT CUSTOM
SIZING AVAILABLE

MAP: 7'10" x 9'10" - \$399.00



NEW ADDITION

39PAF Beige/Ivory



NEW ADDITION

39PBF Charcoal/Ivory



NEW ADDITION

39PCF Gray/Ivory



Percy 39PBF in Charcoal/Ivory

SONORA

NEW

Construction	Machine-made
Materials	Polypropylene, Polyester and Viscose
Country	Turkey

The Sonora Collection embodies a casually elegant style infused with a palette of today's chic hues that effortlessly complement your modern living space. With a trace of viscose to add a subtle sheen, curate your interior with a rich tapestry of shades including the serene blues, verdant greens, earthy taupes, and vibrant reds that define the Sonora Collection's color story. Each rug is a testament to Turkey's esteemed legacy in textile artistry.

Size (US)

- 2' x 3'
- 5' x 7'6"
- 6'7" x 9'6"
- 7'10" x 10'3"
- 9' x 12'8"
- 2'6" x 7'3" Runner

 SELECT CUSTOM
SIZING AVAILABLE

MAP: 7'10" x 10'3" - \$699.00



39NUF Ivory/Multi



39NVF Ivory/Multi



39NWF Ivory/Blue



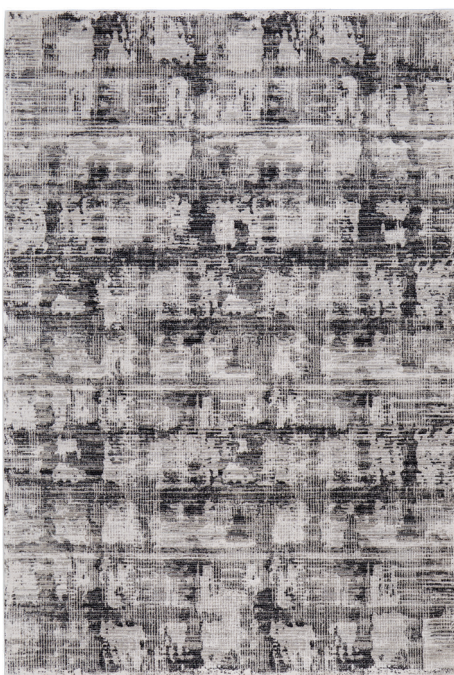
39NXF Gray/Charcoal



39PLF Blue/Light Blue



39NXF Blue/Navy



39NYF Gray/Ivory



39PLF Ivory/Beige

VANCOUVER

Construction	Machine-made
Materials	Polypropylene and Polyester
Country	Turkey

Experience the fusion of longevity and modern design with the Vancouver Collection. Expertly power-loomed, these rugs offer a resilient blend of polypropylene and polyester, ensuring easy care and resistance to life’s inevitable spills. Feel the unique texture underfoot with the high-low cut pile, and let the modern hues of brown, ivory, gray, and taupe in abstract and geometric designs elevate your living space with enduring style.

Size (US)

- 1'8" x 2'10"
- 4' x 6'
- 5' x 8'
- 6'7" x 9'6"
- 8' x 10'
- 9' x 12'
- 10' x 14'
- 12' x 15'
- 2'10" x 7'10" Runner

 SELECT CUSTOM SIZING AVAILABLE

MAP: 8' x 10' - \$699.00



NEW ADDITION 39NPF Beige/Brown



NEW ADDITION 39NQF Beige/Brown



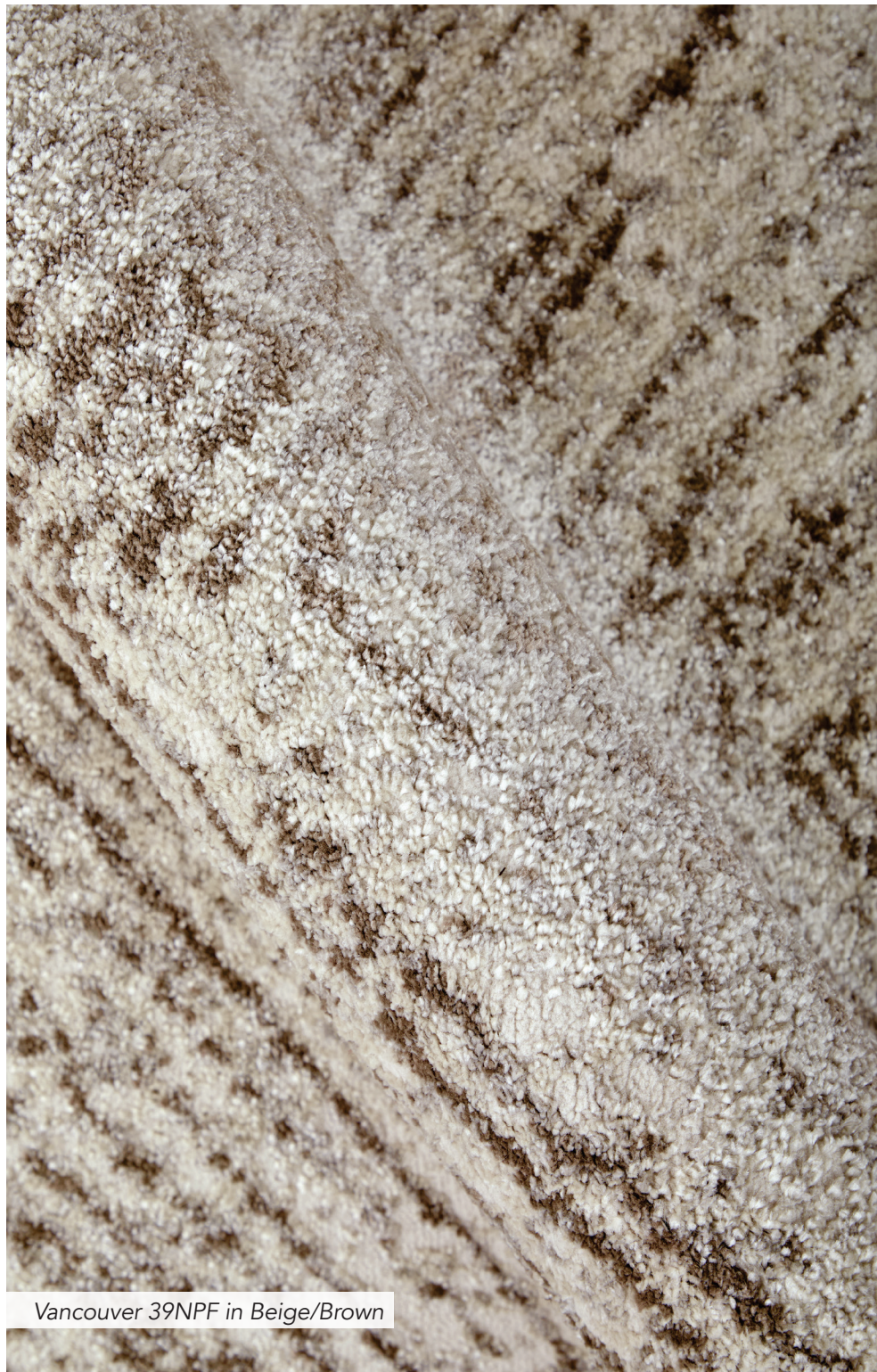
NEW ADDITION

39NRF Beige/Brown



NEW ADDITION

39NTF Beige/Brown



Vancouver 39NPF in Beige/Brown

WALDOR

Construction	Machine-made
Materials	Polypropylene and Polyester
Country	Turkey

Designed with a delicate palette and subtle sheen, the Feizy Waldor Collection impresses with a captivating aesthetic for any space. Using versatile colorways featuring taupe, birch, grey and sterling, the dynamic high-low finishes in each rug accentuate the compelling patterns. Power-loomed with a polypropylene blend, the Waldor Collection boasts a luxurious sheen and feel without excessive maintenance, making it an easy choice for your dream design.

Size (US)

- 1'8" x 2'10"
- 5' x 8'
- 6'7" x 9'6"
- 8' x 11'
- 10' x 13'2"
- 12' x 15'
- 2'10" x 7'10" Runner



MAP: 8' x 11' - \$799.00



NEW ADDITION

39NBF Ivory/Beige



NEW ADDITION

39NCF Ivory/Gold



NEW ADDITION

39NDF Ivory/Gray



39NBF in Ivory/Beige

ZARAH

Construction	Hand-tufted
Materials	Viscose and Wool
Country	India

A modern marvel that brings together the plush comfort of New Zealand wool with the lustrous sheen of viscose. Each rug in this collection is a masterpiece of texture and color, hand-spun and meticulously crafted to create a sensory experience underfoot. With its abstract, linear cross hatch patterns and a serene palette of blue and ivory, the Zarah Collection transforms any space into a haven of contemporary elegance and comfort.

Size (US)

- 1'8" x 2'10"
- 4' x 6'
- 5' x 8'
- 6'7" x 9'6"
- 8' x 10'
- 9' x 12'
- 10' x 14'
- 12' x 15'
- 2'10" x 7'10" Runner



MAP: 8' x 10' - \$2,199.00



NEW ADDITION

8917F Light Blue



Zarah 8917F in Light Blue

SHOWROOMS



OPEN YEAR-ROUND

Dallas

2050 N. Stemmons Freeway
Dallas Market Center
Suite 102
Dallas, TX 75207
214.747.0040
Open M – F

High Point

North Hamilton
309 N Hamilton St
High Point, NC 27260
336.937.0796

Open M – F

BY APPOINTMENT ONLY

Las Vegas

World Market Center
455 S. Grand Central Parkway
Building C, Suite 180
Las Vegas, NV 89106
702.750.8613
Open M – F

Shop New Intros



Contact sales@feizy.com to make an appointment.



800.779.0877 | sales@feizy.com | feizy.com

Featured: Karina 69G7F in Ivory/Green

