

**NIGHT OWL®**

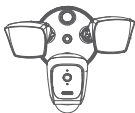
# **Quick Setup Guide**

---

Let's get started

# What's Included

---



(1) Floodlight  
Camera



(1) Metal Mounting  
Bracket



(4) Bracket  
Screws



(1) Camera Mount  
Screw



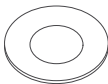
(1) Ground Wire  
Screw



(3) Wire  
Nuts



(1) Silicone  
Cap



(1) Waterproof  
Cushion

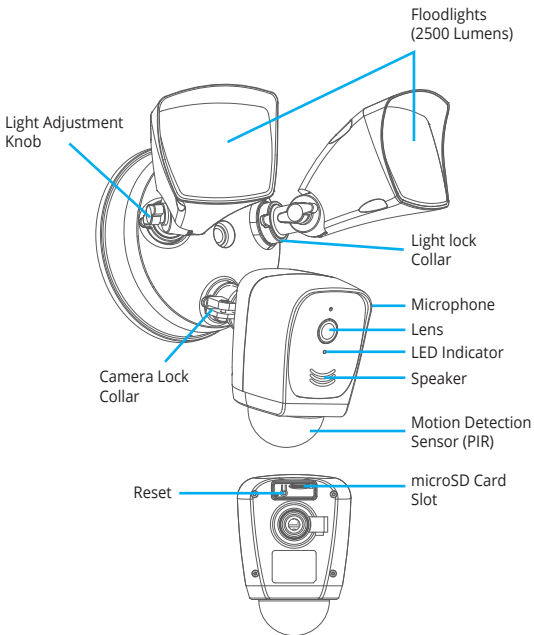


(1) Hook

**NOTE:** You may need a drill, screwdriver and ladder to properly install/mount the camera.

# Camera Details

---



# Download the Night Owl App

---

If you are a first-time user, go ahead and download the Night Owl app. Quickly create an account and log in.

Already have an account? Simply log in.



# Installation Location

---

Choose where you will be mounting the floodlight camera. The recommended installation height is 9 ft. for optimal performance and to minimize tampering.



# Turn Power Off

---

Locate the breaker and shut the power off for the area where you will be connecting the camera.

**IMPORTANT:** If you do not know where the breaker is or how to shut off the power, consult a professional electrician.



**WARNING:** Risk of Electrical Shock

- Disconnect power at the fuse or circuit breaker before installation.
- Verify the supply voltage is correct. Connect the camera to a 100 VAC ~ 240 VAC 50/60 Hz power source.
- Properly ground the camera.
- Always follow code standards when installing wired connections.
- If you are outside of North America, installation and wiring must be performed by a licensed electrician.

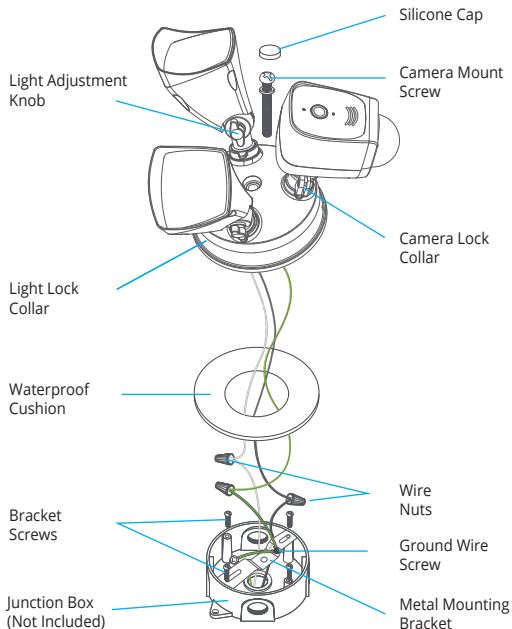
**CAUTION:** Risk of Fire

- DO NOT install near a combustible or flammable surface.

**NOTICE**

- DO NOT connect this camera to a dimmer switch or timer.
- The floodlight camera must be installed on a wall and on a UL listed junction box.

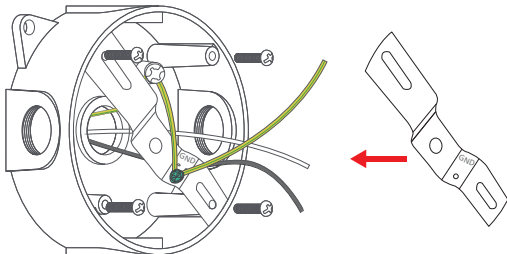
# Camera Assembly Diagram



# Install Mounting Bracket

---

Attach the metal mounting bracket to your junction box.



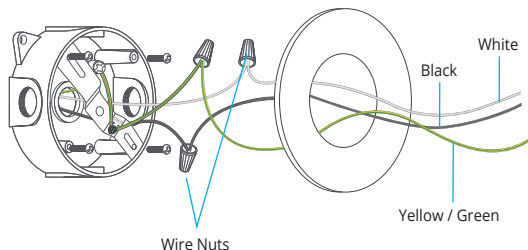


# Wiring the Camera

If needed, use the provided hook to hang the camera from the mounting bracket. Simply remove the small rubber plug from the bottom of the camera and insert the hook. With the waterproof cushion in place, use the wire nuts to attach the wiring from the junction box to the camera. This typically involves the following:

- Black Wire (Hot)
- White Wire (Neutral)
- Yellow / Green Wire (Ground)

Use the ground screw to fix the ground wire to the metal bracket.

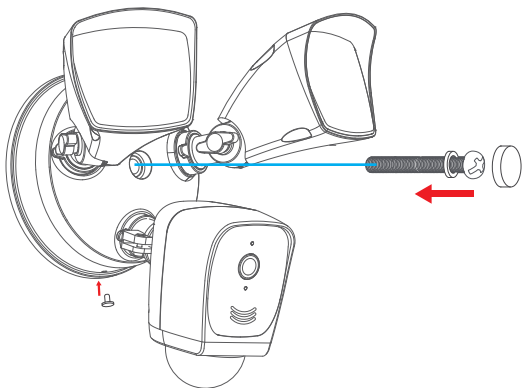


**IMPORTANT:** Depending on your home's age, these wires may be different colors. If you are unsure, please consult a professional electrician.

# Mount your Camera

---

Place the camera on the mounting bracket and use the camera mount screw to secure it. Once secure, place the silicone cap over the screw to make it watertight.



**IMPORTANT:** If you used the hook to hang the camera during wiring, please place it back into the bottom of the camera at this time.

# Restore Power to the Breaker

---

With the camera wired and mounted, you can now restore power at the breaker.



# Add your Camera

---

To begin viewing your camera and adjust the floodlights, add it to the Night Owl app or to a compatible recorder.

For more detailed setup steps, scan the QR codes below.



Standalone  
(Add to the App)



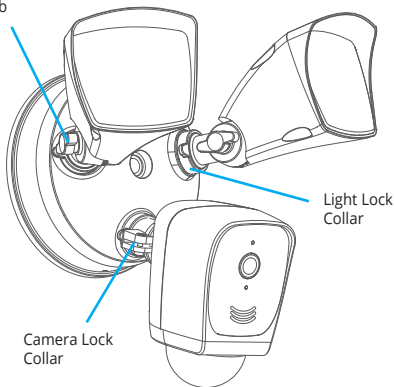
Ecosystem  
(Add to a Recorder)

# Adjust your Camera

---

With the camera now paired, you can use live view to adjust the camera viewing angle and floodlight angles. Loosen the adjustment knobs to get the perfect positioning for each. Once acquired, retighten the knobs and use the lock collars to lock them into place.

Light Adjustment  
Knob



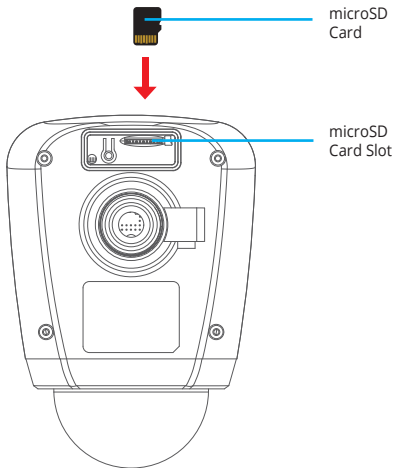
Camera Lock  
Collar

Light Lock  
Collar

# microSD Card

---

If using the camera as a standalone (no recorder), you will need to insert a microSD Card (up to 128GB) for video storage.



# Status LED Guide

---

LED Status	Camera Status
Solid Red	Camera Powering ON
Fast Blinking Blue	Ready to Pair
Slow Blinking Blue	Pairing / Reconnecting
Solid Blue	Camera ON and Paired
Fast Blinking Red & Blue	Firmware Upgrade

## Additional Tips

---

- **Check Connections:** Ensure all the screws are tight, knobs are tight, lock collars are locked in place and that the camera is securely mounted.
- **Check Wi-Fi Strength:** For optimal performance, make sure your camera is within good range of your Wi-Fi router or recorder.
- **Maintenance:** Periodically check and clean your camera lens for clear video quality.
- **Electrical Safety:** If at any point you feel unsure about the electrical aspects of installing this camera, Night Owl STRONGLY RECOMMENDS you consult with a professional electrician.

# Need Help?

---

We are here for you

Our support site is filled with self-help material. From your support page you can use the Live Chat feature or contact our Live Phone support.

1. Please visit **Support.NightOwlSP.com**
2. Enter **FWIP3-FL** into the Search bar

## FCC RADIATION NORM

### FCC

This device complies with Part 15 of the FCC Rules. Operation is subject to the following two conditions: (1) this device may not cause harmful interference, and (2) this device must accept any interference received, including interference that may cause undesired operation.

**FCC Compliance Statement** These limits are designed to provide reasonable protection against frequency interference in residential installation. This equipment generates, uses, and can radiate radio frequency energy, and if not installed or used in accordance with the instructions, may cause harmful interference to radio communication. However, there is no guarantee that interference will not occur in television reception, which can be determined by turning the equipment off and on. The user is encouraged to try and correct the interference by one or more of the following measures:

- Reorient or relocate the receiving antenna.
- Increase the separation between the equipment and the receiver.
- Connect the equipment into an outlet on a circuit different from that to which the receiver is connected.
- Consult the dealer or an experienced radio/TV technician for help.

### CAUTION!

The Federal Communications Commission warns the user that changes or modifications to the unit not expressly approved by the party responsible for compliance could void the user's authority to operate the equipment. This equipment should be installed and operated with a minimum distance of 8 inches between the radiator and your body.