



TIMELESS OAK 5"

Engineered



543 Weathered

TIMELESS OAK 5"



	US Units	Metric Units
Style Number	SW695	
Construction	Engineered	
Species	Red Oak	
Nominal Overall Thickness	1/2"	11.81 mm
Nominal Width	4.94"	125.48 mm
Finish	Repel - Water Resist	
Gloss Level	20%	
Surface Texture	Smooth	
Edge Description	Micro Bevel	
End Description	Mb	
Profile	Tongue And Groove	
Weight per Carton	39 lbs	17.69 kg
SQFT per Carton	19.72 sq ft	1.83 sq m
SQFT per Pallet	1025.44 sq ft	95.26 sq m
Installation Methods	Nail, Staple, Glue, Floating	
Installation Grade	Above, On, Below	
Variation	High	
GREENGUARD® Certified	Yes	
Cradle-to-Cradle Certified	Yes	
Radiant Heat Approved	Yes	
Residential Warranty	Splash-Proof Lifetime	
Commercial Warranty	5 Year Commercial	
All measurements are nominal.	Cartons may include random lengths.	

Features

Timeless Oak 5" by Shaw Floors features red oak hardwood at its finest. With distinctive graining, these planks are sure to make a bold statement on the floor.



MADE IN THE USA

shawfloors.com

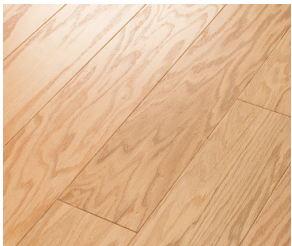


For reference purposes only if printed or downloaded.

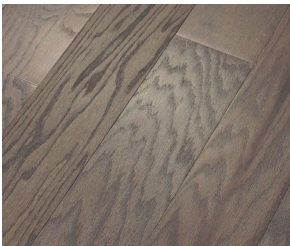
TIMELESS OAK 5"



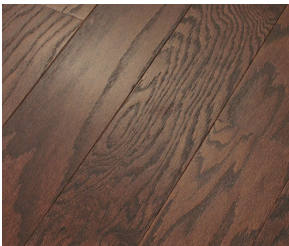
Colors



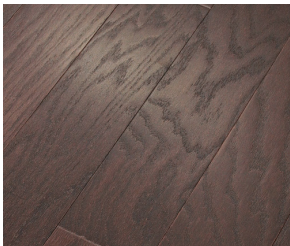
143 Natural



543 Weathered



874 Hazelnut



958 Coffee Bean