



# Instruction Manual

## DREAMWORKS GABBY'S DOLLHOUSE

### **Cat-A-Vator Discovery Book**



Gabby's Dollhouse - Long DreamWorks Gabby's Dollhouse  
© DreamWorks Animation LLC. All rights reserved.

# INTRODUCTION

Thank you for purchasing the **VTech® Gabby's Dollhouse Cat-A-Vator Discovery Book**. This paw-tastic book includes 14 interactive book pages to engage with! Move the **Cat-A-Vator Mode Slider** to access the three activity modes and explore the Dollhouse with Gabby and friends. Your child can learn about the 28 Dollhouse words and jam to cute sounds with DJ Catnip's music. Press the **Surprise Box Button** to take on challenges and help Gabby solve questions on each page by pressing the 4 **Light Up Buttons**. Press the Gabby Button and the buttons for the Gabby Cats to hear adorable show phrases with Gabby's signature excitement and to learn more about them. Let's have a meow-zing party time with Gabby and the Gabby Cats!



1. Light Up Ear	5. On/Off Button	9. Cat-A-Vator Mode Slider
2. Light Up Buttons	6. Volume Button	10. MerCat Button
3. Gabby Button	7. Surprise Box Button	11. Cakey Button
4. Book Pages	8. Pandy Button	

## INCLUDED IN THE PACKAGE

- One Gabby's Dollhouse Cat-A-Vator Discovery Book
- Two AA batteries for demo purposes only
- Quick Start Guide

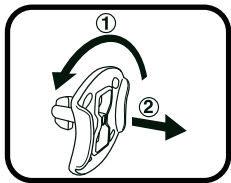
### WARNING

All packing materials such as tape, plastic sheets, packaging locks, removable tags, cable ties, cords and packaging screws are not part of this toy and should be discarded for your child's safety.

### NOTE

Please save this Instruction Manual as it contains important information.

### Unlock the Packaging Locks



① Rotate the packaging locks 90 degrees anticlockwise.

② Pull out the packaging locks and discard.

# GETTING STARTED

## Exit Try-Me Mode

**Gabby's Dollhouse Cat-A-Vator Discovery Book** is in Try-Me Mode in the packaging. To exit Try-Me Mode, follow the below steps to activate Normal Play Mode.



1. Make sure the **Book** is closed.



2. Move the **Cat-A-Vator Mode Slider** to the highest position.



3. Hold the **Light Up Button** on top (the **Pink Button**) and the **Gabby Button**, then press the **On/Off Button**.



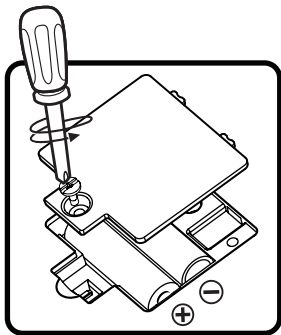
4. If it has successfully exited Try-Me Mode, a beep will play and the **Pink Button** will flash twice. The unit will automatically power **Off** after 2 minutes of inactivity.

# Battery Removal And Installation

## WARNING:

Adult assembly required for battery installation.  
Keep batteries out of reach of children.

1. Make sure the unit is turned **Off**.
2. Find the battery cover located on the bottom of the unit. Use a screwdriver to loosen the screw and then open the battery cover.
3. Remove old batteries by pulling up on one end of the batteries.
4. Install 2 new AA (AM-3/LR6) batteries following the diagram inside the battery boxes (for best performance, alkaline batteries or fully charged Ni-MH rechargeable batteries are recommended).
5. Replace the battery cover and tighten the screw to secure.



## **IMPORTANT: BATTERY INFORMATION**

- Insert batteries with the correct polarity (+ and -).
- Do not mix old and new batteries.
- Do not mix alkaline, standard (carbon-zinc) or rechargeable batteries.
- Only batteries of the same or equivalent type as recommended are to be used.
- Do not short-circuit the supply terminals.
- Remove batteries during long periods of non-use.
- Remove exhausted batteries from the toy.
- Dispose of batteries safely. Do not dispose of batteries in fire.

## **RECHARGEABLE BATTERIES:**

- Remove rechargeable batteries (if removable) from toy before charging.
- Rechargeable batteries are only to be charged under adult supervision.
- Do not charge non-rechargeable batteries.

## Disposal of batteries and product



The crossed-out wheeled bin symbols on products and batteries, or on their respective packaging, indicates they must not be disposed of in domestic waste as they contain substances that can be damaging to the environment and human health.



The chemical symbols Hg, Cd or Pb, where marked, indicate that the battery contains more than the specified value of mercury (Hg), cadmium (Cd) or lead (Pb) set out in the Batteries and Accumulators Regulation.

The solid bar indicates that the product was placed on the market after 13th August, 2005.

Please dispose of your product and batteries responsibly.

In the UK, give this toy a second life by disposing of it at a small electricals collection point\* so all of its materials can be recycled.

Learn more at:

[www.vtech.co.uk/recycle](http://www.vtech.co.uk/recycle)

[www.vtech.com.au/sustainability](http://www.vtech.com.au/sustainability)

\* Visit [www.recyclenow.com](http://www.recyclenow.com) to see a list of collection points near you.

# PRODUCT FEATURES

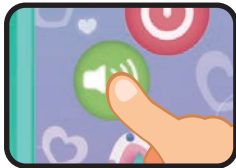
## 1. On/Off Button

Press this button to turn the unit **On** or **Off**.



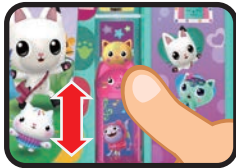
## 2. Volume Button

Press the **Volume Button** to toggle between the volume levels, Low / Medium / High (the volume level will reset to Medium each time the unit is turned **On**).



## 3. Cat-A-Vator Mode Slider

Move this slider to access the 3 activity modes.



## 4. Book Pages

Turn to any page to explore stories from different rooms of the dollhouse, learn new dollhouse words, and enjoy melodies inspired by the dollhouse.



## 5. Light Up Buttons

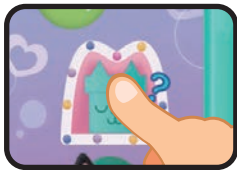
Press the four **Light Up Buttons** to access the corresponding contents according to the current mode and book page.





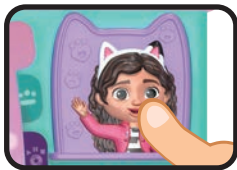
## 6. Surprise Box Button

Press the **Surprise Box Button** to start a challenge. Gabby will ask questions about the current book page.



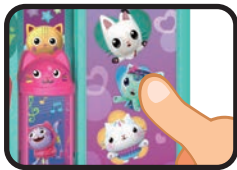
## 7. Gabby Button

Press the **Gabby Button** to hear cute show phrases with Gabby's signature excitement.



## 8. Gabby Cat Buttons

Press the other character buttons to learn about them and their unique traits and skills.



## 9. Automatic Shut-Off

To preserve battery life, the unit will automatically power **Off** after approximately 2 minutes without input. The unit can be turned **On** again by pressing the **On/Off Button**.

**Note:** If the unit repeatedly powers down or has abnormal responses when the unit is switched **On**, please install a brand new set of batteries and try switching it **On** again.

# ACTIVITIES

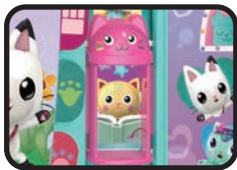
## 1. Dollhouse Word Mode

Move the **Cat-A-Vator Mode Slider** to **Dollhouse Word Mode** (upper position) to learn and explore Dollhouse words. Open the book and press the **Light Up Buttons** to learn the corresponding words.



## 2. Dollhouse Story Mode

Move the **Cat-A-Vator Mode Slider** to **Story Mode** (middle position). Turn to different pages to explore the Gabby Cats' stories in different rooms and join the party together. Open the book and press the **Light Up Buttons** to listen to Gabby read the stories that took her through all the Dollhouse rooms.



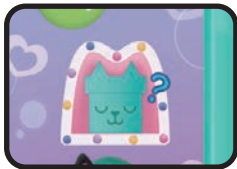
## 3. Music Mode

Move the **Cat-A-Vator Mode Slider** to **Music Mode**, then turn to any page to enjoy each room's music with Gabby and friends! Press any **Light Up Button** to insert a cute sound effect for added fun.



## 4. Challenge Mode

What did you learn from the **Story** and **Dollhouse Word Modes**? Press the **Surprise Box Button** for a challenge. Gabby will ask you some questions, press the **Light Up Buttons** to answer.



## CARE & MAINTENANCE

1. Keep the unit clean by wiping it with a slightly damp cloth.
2. Keep the unit out of direct sunlight and away from any direct heat source.
3. Remove the batteries if the unit will not be in use for an extended period of time.
4. Do not drop the unit on hard surfaces and do not expose the unit to moisture or water.

## TROUBLESHOOTING

If for some reason the unit stops working or malfunctions, please follow these steps:

1. Please turn the unit **Off**.
2. Interrupt the power supply by removing the batteries.
3. Let the unit stand for a few minutes, then replace the batteries.
4. Turn the unit **On**. The unit should now be ready to play again.
5. If the unit still does not work, install a new set of batteries.

# CONSUMER SERVICES

Creating and developing **VTech®** products is accompanied by a responsibility that we at **VTech®** take very seriously. We make every effort to ensure the accuracy of the information, which forms the value of our products. However, errors sometimes can occur. It is important for you to know that we stand behind our products and encourage you to call our Consumer Services Department with any problems and/or suggestions that you might have. A service representative will be happy to help you.

## **UK Customers:**

Phone: 0330 678 0149 (from UK) or +44 330 678 0149 (outside UK)

Website: [www.vtech.co.uk/support](http://www.vtech.co.uk/support)

## **Australian Customers:**

Phone: 1800 862 155

Website: [support.vtech.com.au](http://support.vtech.com.au)

## **NZ Customers:**

Phone: 0800 400 785

Website: [support.vtech.com.au](http://support.vtech.com.au)

# Product Warranty/ Consumer Guarantees

## **UK Customers:**

Read our complete warranty policy online at [vtech.co.uk/warranty](http://vtech.co.uk/warranty).

## **Australian Customers:**

VTECH ELECTRONICS (AUSTRALIA) PTY LIMITED –  
CONSUMER GUARANTEES

Under the Australian Consumer Law, a number of consumer guarantees apply to goods and services supplied by VTech Electronics (Australia) Pty Limited. Please refer to [vtech.com.au/consumerguarantees](http://vtech.com.au/consumerguarantees) for further information.

**Visit our website for more  
information about our products,  
downloads, resources and more.**

***[www.vtech.co.uk](http://www.vtech.co.uk)***  
***[www.vtech.com.au](http://www.vtech.com.au)***

