



529 Oceanside

	US Units	Metric Units
Style Number	SA495	
Construction	Engineered	
Species	Maple	
Nominal Overall Thickness	3/8"	8.2 mm
Nominal Width	5"	127 mm
Finish	Repel - Water Resist	
Gloss Level	40%	
Surface Texture	Smooth	
Edge Description	Pillowed	
End Description	PI	
Profile	Tongue And Groove	
Weight per Carton	35 lbs	15.87 kg
SQFT per Carton	23.66 sq ft	2.19 sq m
SQFT per Pallet	1419.6 sq ft	131.88 sq m
Installation Methods	Nail, Staple, Glue, Floating	
Installation Grade	Above, On, Below	
Variation	Moderate	
GREENGUARD® Certified	Yes	
Cradle-to-Cradle Certified	Yes	
Radiant Heat Approved	Yes	
Residential Warranty	Splash-Proof Lifetime	
Commercial Warranty	5 Years	
All measurements are nominal.	Cartons may include random lengths.	

Features

The smooth surface of Clearwater is sophisticated and refined - perfect for urban and contemporary settings. Also available in a scraped surface version, East Lake.

Suggested Adhesive

Style Name	Style Number
35MC	HS105
Urebond Plus	SWADH

Trim Pieces length: 78" (*Overlap Reducer and Overlap Stairnose are designed for floating installations only. These items are non-stocking - but are available through a quick-ship program. Delivery should take approximately 2 to 3 weeks.)



SFR38
Flush Reducer



SOR38
*Overlap Reducer



SFS38
Flush Stairnose



SSO38
*Overlap Stairnose



SCR38
Threshold / Carpet
Reducer



TMD78
T-Molding



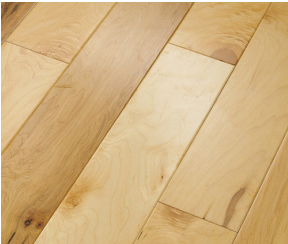
QTR96
Quarter Round

Trim images are for illustration purposes only. Actual dimensions will vary.
Contact the Shaw Information Center for additional details: 800-441-7429.

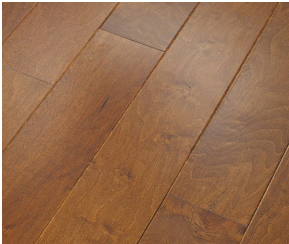


MADE IN THE USA

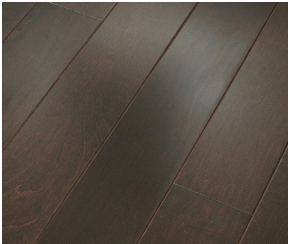
Colors



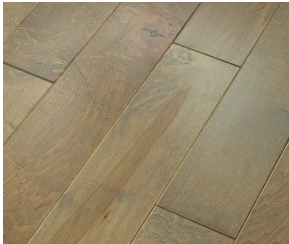
130 Maple Natural



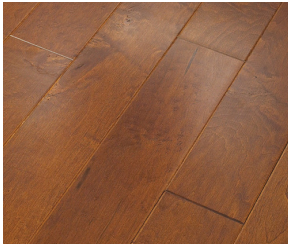
460 Surfside



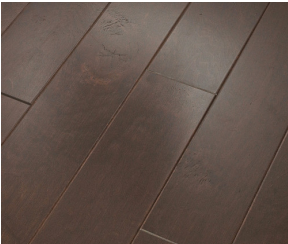
493 Bayfront



529 Oceanside



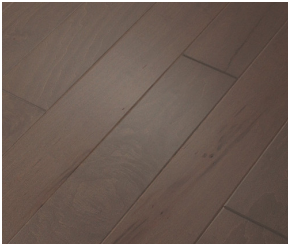
627 Burnside



698 Conway



1023 Crescent Beach



5034 Windsurf