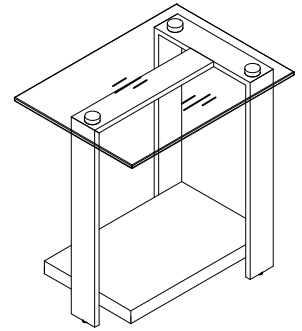


#### Warning :

- Be sure to check all packing material carefully for small parts, which may have come loose inside the carton during shipment.
- To prevent possible scratches and damage, this furniture **MUST BE ASSEMBLED BY TWO PEOPLE** on a soft surface such as a blanket or carpet.



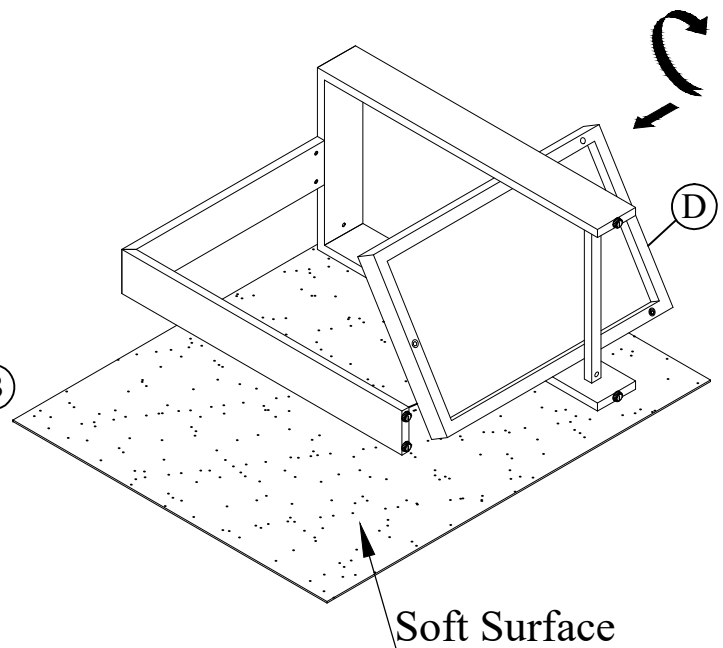
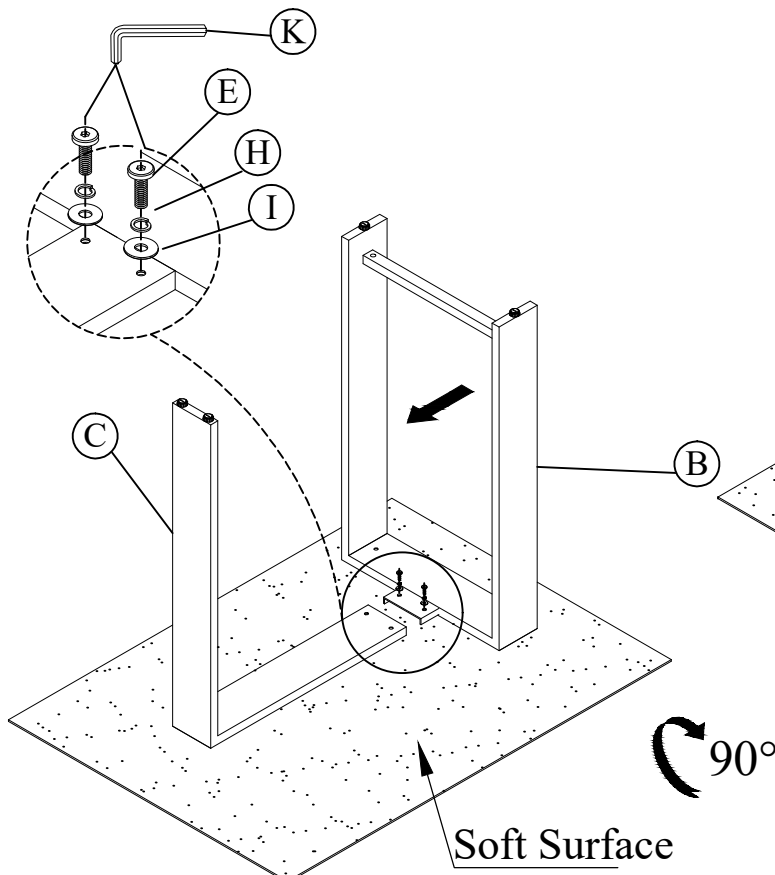
82212  
Chairside Table

#### Components and Hardware List

<p>Glass Top 1 pc.</p>	<p>Side Leg Frame 1 pc.</p>	<p>Middle Leg Frame 1 pc.</p>	<p>Shelf 1 pc.</p>	<p>Allen Head Bolt 1/4" x 20 x 5/8" 3 pcs.</p>	<p>Allen Head Bolt 1/4" x 20 x 1" 3 pcs.</p>	<p>Allen Head Bolt 1/4" x 20 x 1-1/4" 2 pcs.</p>
<p>Spring Washer 1/4" x 12 x 1mm 8 pcs.</p>	<p>Flat Washer 1/4" x 16 x 2mm 8 pcs.</p>	<p>Allen Key 4 mm 1 pc.</p>				

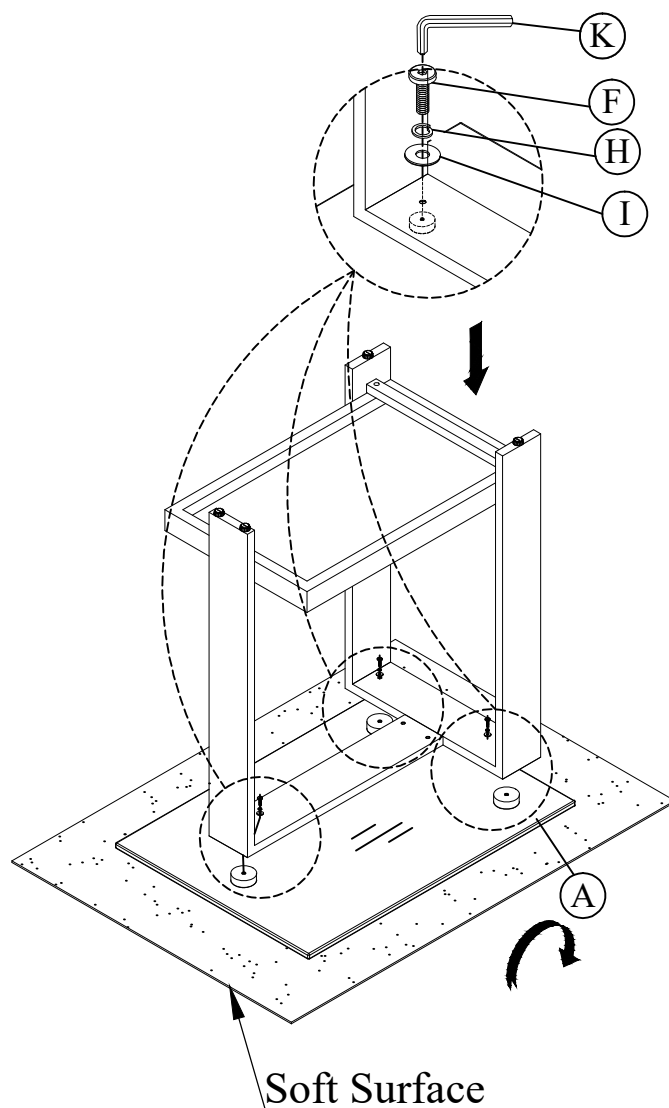
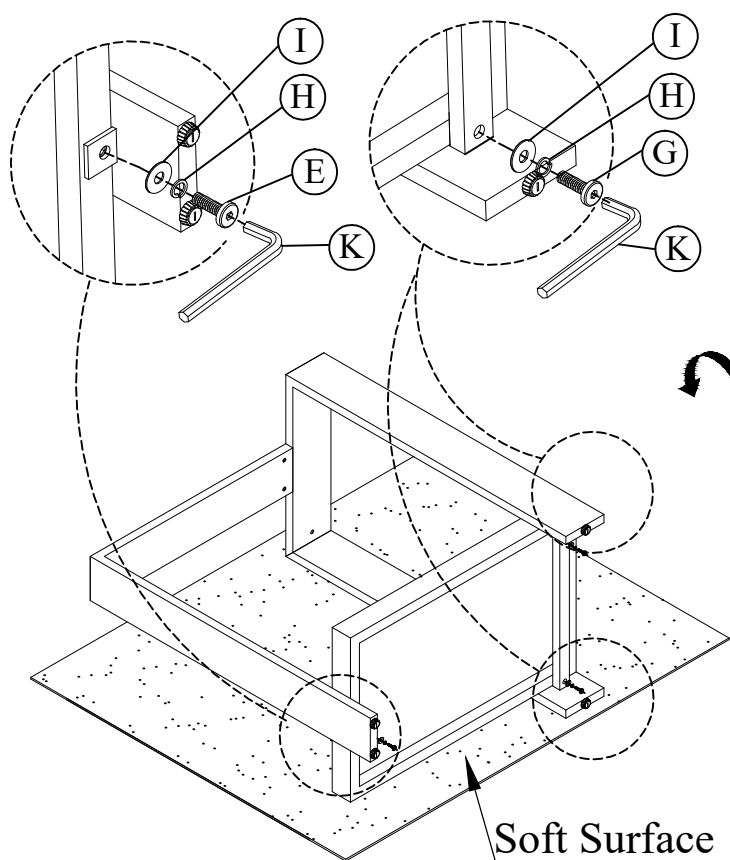
#### Step 1: Assembly the Leg frame.

#### Step 2: Move the shelf.



Step 3: Using the Allen key to tighten bolts.

Step 4: Assembly the Glass top.



Step 5:

