

en-us Use and Care Manual, Installation Instructions

**Dryer**  
WTW87NH1UC



**Welcome to Your New Dryer!**

**Congratulations on your selection of a new Bosch dryer for your laundry needs. We are confident you will enjoy the superior performance and reliability.**

**Please do not hesitate to contact our Customer Service department if you have any questions or comments about your new dryer.**

**Thank you for choosing Bosch.**

**Visit our website at [www.bosch-home.com/us](http://www.bosch-home.com/us) (USA) or [www.bosch-home.ca](http://www.bosch-home.ca) (Canada) for more information and to view a selection of our products.**

# Table of contents

<b>Important information</b> .....	<b>4</b>	Activating/deactivating Wi-Fi .....	33
Purchase information .....	4	Resetting your network settings .....	33
Customer service .....	4	Updating the software .....	33
<b>Your dryer is intended for</b> .....	<b>5</b>	Information on data protection .....	33
<b>Safety Definitions</b> .....	<b>5</b>	Declaration of Conformity .....	34
<b>IMPORTANT SAFETY INSTRUCTIONS</b> .....	<b>6</b>	Wi-Fi® Module FCC/IC Statements .....	34
<b>Introduction to your new dryer</b> .....	<b>8</b>	<b>Laundry</b> .....	<b>35</b>
Standard features and helpful information .....	8	Preparing the laundry .....	35
Special features .....	8	Sorting the laundry .....	35
Environmentally friendly use of your dryer .....	9	Drying tips .....	35
<b>Dimensions and clearances required</b> .....	<b>10</b>	<b>Program selection table</b> .....	<b>36</b>
Installation for best performance .....	10	<b>Optional program settings</b> .....	<b>37</b>
Appliance dimensions .....	10	Low Heat .....	37
Length of power cord and drain hose .....	10	Time Dry (⌚) .....	37
Minimum clearances .....	11	Remote Start .....	37
<b>INSTALLATION INSTRUCTIONS</b> .....	<b>12</b>	Finish in .....	37
Introduction .....	12	Dryness Level .....	37
Before installing the dryer .....	12	Level Adjust .....	37
Waste disposal .....	13	End Signal .....	37
Parts provided with your dryer .....	13	Wrinkle Block .....	37
Accessories for your appliance .....	14	<b>Appliance settings</b> .....	<b>38</b>
Installation - step by step and check list .....	15	Child lock 3 sec. ....	38
Electrical Connections .....	18	Activating setting mode .....	38
Leveling the dryer .....	19	Exiting setting mode .....	38
Check heating system .....	19	<b>USER-MAINTENANCE INSTRUCTIONS</b> .....	<b>39</b>
Preparing to transport the dryer - step by step .....	20	Cleaning the Dryer's exterior .....	39
Reversing the door - step by step .....	20	Cleaning the lint filter area .....	39
<b>Getting to know your appliance</b> .....	<b>23</b>	Cleaning the lint filters .....	39
Control panel .....	23	Cleaning the moisture sensors .....	40
Display area .....	24	Maintenance of drain hose .....	41
<b>OPERATING INSTRUCTIONS</b> .....	<b>26</b>	Replacing fuses in the Power Adapter - step-by-step .....	41
Your new dryer .....	26	<b>Troubleshooting</b> .....	<b>42</b>
Before using the dryer for the first time .....	27	Introduction .....	42
Temporary disconnection of the dryer .....	28	General Troubleshooting .....	42
Using program selector to choose a drying program .....	28	<b>STATEMENT OF LIMITED PRODUCT WARRANTY</b> ..	<b>45</b>
Program selection .....	28	Bosch Clothes Dryer .....	45
Selecting optional program settings .....	28		
Loading the laundry .....	29		
Starting the program .....	29		
Indicator of program sequence .....	30		
Selecting a different program .....	30		
Cancel program .....	30		
Program end .....	30		
Removing laundry/switching the appliance off .....	30		
<b>Home Connect®</b> .....	<b>31</b>		
Calling up the Home Connect menu .....	31		
Connecting your home network to the Home Connect app .....	31		

Additional information on products, accessories, replacement parts and services can be found at [www.bosch-home.com/us](http://www.bosch-home.com/us) (USA) or [www.bosch-home.ca](http://www.bosch-home.ca) (Canada) and in the online shop [www.bosch-home.com/us/store](http://www.bosch-home.com/us/store)

Questions?  
1-800-944-2904

www.bosch-home.com/us (USA)  
or  
www.bosch-home.ca (Canada)

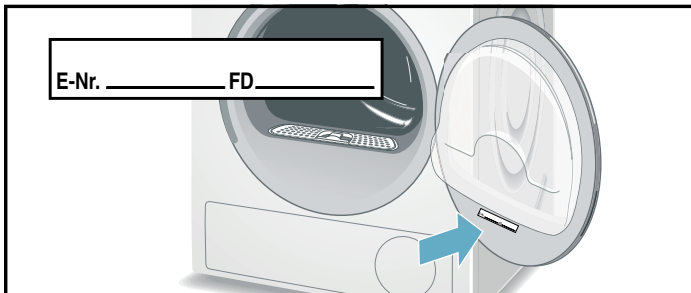
1901 Main Street, Suite 600  
Irvine, CA 92614

We look forward to hearing from you!

## Important information

### Purchase information

Please take a moment to record the following basic information about the purchase of your new Bosch dryer. This information will be helpful in the event you need to contact Customer Service or would like to order accessories or replacement parts for your dryer.



The **E-Nr.** (model number) and the **FD** (serial) number can be found on the rating plate label (shown above) or in the Home Connect application under Appliance Information.

The model number includes the slash and a two digit number (eg: "/01"). Please be sure to include the final 2 digit number when filling in your model number. This helps make sure any parts you may need are correctly matched to your specific machine.

Date of Purchase: \_\_\_/\_\_\_/\_\_\_

Where Purchased: \_\_\_\_\_

**E-Nr.** : \_\_\_\_\_/\_\_\_ (ex: WTG86xxxUC/01)

**FD** : \_\_\_\_\_ - \_\_\_\_\_ (ex: 9709|90007, provides production date)

The manufacturer reserves the right to make changes in the product or manual without notification.

### Customer service

Your dryer does not require any special care other than the maintenance and care mentioned in this manual. If you have a problem with your dryer, please consult the Troubleshooting section of this manual.

→ *Troubleshooting; Page 42*

If problems persist and service is necessary, please contact our customer service department.

Do not attempt to repair the appliance yourself.

Bosch Customer Service  
1-800-944-2904

Or by mail  
BSH Home Appliances Corporation  
1901 Main Street, Suite 600  
Irvine, CA 92614

When writing or calling please have the following information available:

- E-Nr. (model number, example: WTG86xxxUC/01)
- FD (serial number, example: 9708|90007)
- Date of Original Purchase (receipt may be required)
- Date Problem Occurred
- Explanation of Problem

If writing, please also include a daytime telephone number and a copy of the sales invoice.

When calling Customer Service, please be ready to provide the model number **E-Nr.** and **FD** number. This information will help provide the best support for your dryer.

Additional information is available at our website:  
www.bosch-home.com/us (USA) or www.bosch-home.ca (Canada).

---

## Your dryer is intended for

- Only household use and in a non-commercial environment.
  - Drying textiles washed in a residential style clothes washer.
  - Operating conditions:  
Recommended ambient temperatures: 59-86°F / 15-30°C.  
Min/Max allowable temperatures: 41-95°F / 5-35°C.  
Relative humidity: under 95%
  - Installation by qualified installers.
  - Installation in accordance with all regulatory requirements; if in doubt have the appliance installed by a specialist familiar with these requirements.
- Before using the appliance, read the use and installation instructions and all other information included with the appliance and act accordingly.  
Keep all documents for future use.

---

## Safety Definitions

Important safety information is contained in this manual and on the warning labels located on your dryer.

Standard symbols and headings are used to identify areas where you should take precautions to avoid injury or property damage. Please take a moment to become familiar with each of these symbols and what they mean before proceeding.

---

### **WARNING**

This indicates that death or serious injuries may occur as a result of non-observance of this warning.

---

---

### **CAUTION**

This indicates that minor or moderate injuries may occur as a result of non-observance of this warning.

---

**NOTICE:** This indicates that damage to the appliance or property may occur as a result of non-observance of this warning.

**Tip:** This symbol is used to draw the user's attention to important matters.

# **IMPORTANT SAFETY INSTRUCTIONS**

## READ AND SAVE THESE INSTRUCTIONS

---

### **WARNING**

---

When properly cared for, your new appliance has been designed to be safe and reliable. Read all instructions before using the appliance. These precautions will reduce the risk of burns, electric shock, fire, and injury to persons. When using laundry appliances, basic safety precautions must be followed, including those in the following pages.

---

Examine the appliance after unpacking it. In the event of transport damage, do not plug it in.

---

### **WARNING**

---

TO REDUCE THE RISK OF FIRE, ELECTRIC SHOCK, SERIOUS INJURY OR DEATH WHEN USING YOUR DRYER, FOLLOW BASIC PRECAUTIONS INCLUDING THE FOLLOWING

- Bosch dryers are provided with a Use and Care Manual with Installation Instructions. Read and understand all instructions before using the dryer.
- Do not dry articles that have been previously cleaned, washed, soaked, or spotted with gasoline, dry cleaning solvents, other flammable or explosive substances as they give off vapors that could ignite or explode.
- Before the appliance is removed from service or discarded, remove the door (to the drying compartment) to prevent children from playing or hiding inside. Also remove the power cord/plug.
- Do not allow anyone to climb, lean or hang on any part of the dryer including any protruding components such as the appliance door or a pullout shelf.
- Do not reach into the appliance if the drum is moving.
- Do not tamper with the controls.
- Do not repair or replace any part of the appliance or attempt any service unless specifically recommended in these user maintenance instructions.
- Do not use replacement parts that have not been recommended by the manufacturer (e.g. parts made by using a 3D printer).
- Do not use fabric softeners or products to eliminate static unless recommended by the manufacturer of the fabric softener or product.
- Always unplug the dryer from the power supply before attempting any service. Disconnect the power cord by grasping the plug, not the cord.
- To reduce the risk of fire, clothes, cleaning rags, mop heads and the like which have traces of any flammable substance, such as vegetable oil, cooking oil, petroleum based oils or distillates, waxes, fats, etc., must not be placed in the dryer. These items may contain some flammable substance(s) even after washing, which may smoke or catch fire by itself.

- Do not place items exposed to cooking oils in your dryer. Items contaminated with cooking oils may contribute to a chemical reaction that could cause a load to catch fire.
- Do not use heat to dry articles containing foam rubber (may be labeled latex foam) or similarly textured rubber-like materials or equivalent. Foam rubber materials can ignite by spontaneous combustion.
- Keep flammable materials and vapors, such as gasoline, away from the dryer.
- Clean lint filters before or after each load.
- Do not install or store this appliance where it will be exposed to the weather. Hoses and internal parts may be damaged if exposed to freezing temperatures.
- Do not use the dryer if it has a worn power cord or loose plug.
- The dryer must only be used for its intended purpose.
- Always follow the fabric care instructions recommended by the clothing manufacturer.
- Do not operate the dryer if parts are missing or broken.
- Do not sit on top of the dryer.
- To reduce the risk of fire or electrical shock, DO NOT use an extension cord to connect the dryer to the electrical power supply.
- Always check pockets and remove any objects. Cigarette lighters are particularly hazardous.
- The appliance contains R290, a refrigerant that is environmentally friendly but flammable. Keep open fire and ignition sources away from the appliance.



- Do not operate the dryer if any guards and/or panels have been removed.
- Do not bypass any safety devices.
- Do not operate this dryer until you are sure that:
  - All services connected to the dryer (power, drain, etc.) have been installed according to the Installation Instructions.
  - Installation and grounding are in compliance with all local regulations and/or other applicable regulations and requirements.
- Failure to install, maintain and/or operate the dryer according to the manufacturer's instructions may result in injury and/or damage.
- To avoid floor damage and mold growth, do not let spills or splashout cause standing water around or under the appliance.
- See the Installation Instructions section in this manual for grounding requirements.  
→ *Electrical Connections; Page 18*
- The IMPORTANT SAFEGUARDS and WARNINGS presented in this manual do not cover all possible conditions that may occur. Common sense, caution and care must be exercised when installing, maintaining or operating the dryer.

# **IMPORTANT SAFETY INSTRUCTIONS**

## READ AND SAVE THESE INSTRUCTIONS

- Always contact your dealer, distributor, service provider or the manufacturer about any problems or conditions that you do not understand.
  - Follow the Safety Information in the INSTALLATION INSTRUCTIONS and the OPERATING INSTRUCTIONS.
- 

### **WARNING**

---

#### WARNINGS FOR CHILDREN AND PETS

- Do not allow children and pets to play on or in the appliance. Close supervision of children is necessary when the appliance is used near children.
  - Make sure to utilize all child lock/safety features of your appliance, and be sure to turn the appliance **Off** when not in use.
  - Appliances are not intended for use by children, however when children become old enough to operate the appliance, it is the responsibility of the parents or legal guardians to ensure they are instructed in safe practices by qualified persons.
  - Keep all laundry aids (including detergents, bleach, fabric softeners, etc.) out of the reach of children.
  - Keep pets away from the appliance.
- 

### **WARNING**

---

#### PROPOSITION 65 WARNING

This product may contain a chemical known to the State of California, which can cause cancer or reproductive harm. Therefore, the packaging of your product may bear the following label as required by California:

**STATE OF CALIFORNIA PROPOSITION 65 WARNING:**

 **WARNING**

Cancer and Reproductive Harm - [www.P65Warnings.ca.gov](http://www.P65Warnings.ca.gov)

---

#### SAVE THESE INSTRUCTIONS!

Keep these instructions for future reference and in case of change of ownership, manual should be conveyed with the dryer.

# **IMPORTANT SAFETY INSTRUCTIONS**

READ AND SAVE THESE INSTRUCTIONS

## Introduction to your new dryer

### **WARNING**

**RISK OF FIRE, ELECTRIC SHOCK OR INJURY**  
To reduce the risk of fire, electric shock or injury to persons, read the IMPORTANT SAFETY INSTRUCTIONS of this manual before installing or operating this appliance.  
→ *IMPORTANT SAFETY INSTRUCTIONS; Page 6*

### **Standard features and helpful information**

#### **Thank you for choosing Bosch for your laundry appliance needs.**

Please read and follow the use and care, important safety instructions and troubleshooting information contained in this manual. Please retain this manual for future reference.

→ *Troubleshooting; Page 42*

This dryer complies with UL 2158 Electric Clothes Dryers.

#### **Standard features**

- ENERGY STAR® certified to save energy, save money and protect the climate.
- Temperatures inside the drum are lower than conventional dryers for gentle drying conditions and fabric care.
- Sensor controlled auto cycles.
- 17.6 lb (8 kg) large drum capacity (for regular cotton loads).
- Large door opening, 180° opening angle.

#### **Quality tested**

Each dryer which leaves our factory has undergone a thorough performance test and is in full working condition.

#### **Website**

Visit our website at [www.bosch-home.com/us](http://www.bosch-home.com/us) (USA) or [www.bosch-home.ca](http://www.bosch-home.ca) (Canada) for more information and to view a selection of our products.

#### **About this manual**

These operating and installation instructions apply to more than one model of dryer. Illustrations used may show details that differ from your particular model.

Read your user manual. It contains valuable information about the safety, installation and operation of your new appliance.

This can save you time, make it easier to correctly install and use your dryer, and improve your overall satisfaction with your new appliance.

### **Special features**

- A distinctive feature of your Bosch dryer is its Self-Cleaning Condenser. This is unique only to Bosch Heat Pump dryers and eliminates the additional requirements of cleaning a secondary condensate filter found on all other Heat Pump dryers.

The Bosch Self-Cleaning condenser keeps energy usage low for life by regularly rinsing the condenser with every drying cycle. This helps maintain the low energy consumption as originally certified as an ENERGY STAR MOST EFFICIENT dryer.

- Bosch dryers feature advanced operation philosophy, customized drying programs and a solid touch and feel making them a user-friendly household assistant.
- Bosch load sensing feature controls power consumption for each cycle based on the amount and type of laundry. This automatic feature optimizes energy efficiency.



## Environmentally friendly use of your dryer

Your new Bosch dryer is designed to use energy in a highly efficient way to help reduce operating costs, conserve resources and protect the environment.

To save energy, money and time, Bosch recommends the following:

- **Spin the laundry thoroughly**  
Before drying, spin the laundry thoroughly in the washing machine. Use the highest possible spin speed for the type of laundry. Higher spin speeds reduce the drying time and the energy consumption.
- **Optimize load and selected drying program**
  - Use the maximum amount of laundry for the appropriate drying program.
  - Use automatic drying programs for the most energy efficient use of your dryer. They perform according to internal moisture and temperature sensors delivering optimized efficiency and fabric care.
  - Use the Time Dry program for touching up damp loads or for small loads. This program will use more energy than the automatic programs.  
→ *Program selection table; Page 36*

**NOTICE:** The energy rating of this dryer is based on the Cotton program with the Dryness Level set to Dry (all other option settings are off).

- **Clean filters**  
Clean the lint filters before or after each drying process.  
→ *Cleaning the lint filters; Page 39*
- **Air inlet on the dryer**  
Do not cover or allow any articles/items to restrict the air inlet on the front of the dryer.
- **Energy-saving mode**  
The display panel lighting goes out after a few minutes and Start/Pause flashes. To activate the display, press any button.  
Energy-saving mode is not activated if a program is running.  
If Wi-Fi is activated the appliance will not automatically switch off (automatic switch-off function is deactivated).

# Dimensions and clearances required

## Installation for best performance

### ⚠ CAUTION

DO NOT INSTALL THE DRYER:

- outdoors,
- in an environment with dripping water,
- near flammable materials,
- in rooms which are at risk of freezing,
- in rooms which may contain gas or other fuels,
- on carpets.

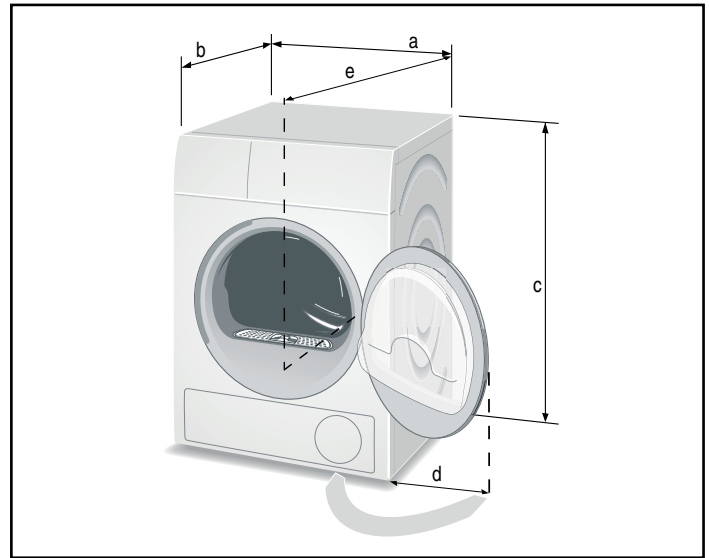
Because many variables affect drying time we recommend allowing as much free air space around your dryer as possible for the shortest drying cycle time.

**NOTICE:** If your dryer is located in a closet, leave the closet door open while the dryer is operating.

The recommended ambient temperatures (between 59-86°F / 15-30°C) are for optimum drying times, outside of this range drying times may be longer.

The installation surface (floor) must be level and structurally sound. Using a bubble level and the height-adjustable feet installed on the appliance, level the appliance side to side and front to back.

## Appliance dimensions



Label	Dimension	U.S. Inches	Metric cm
a	Width	23.6	60
b	Depth (to front of door)	25	63.5
c	Height (minimum)	33.2	84.3
	Height (maximum)	34	86.4
d	Side clearance (door open 180°)	16	40.6
e	Depth (door open 90°)	42.9	109

## Length of power cord and drain hose

	To Left*		To Right*	
	U.S. Inches	Metric cm	U.S. Inches	Metric cm
Power Cord	40	102	57	145
Drain Hose	19	48	40	102

\* Facing the front of the dryer

## Minimum clearances

### Closet: Stacked

Only with one of the Bosch required Stacking Kits (sold separately), can this Bosch Dryer be stacked on top of a Bosch Washer of the same dimensions to save space.

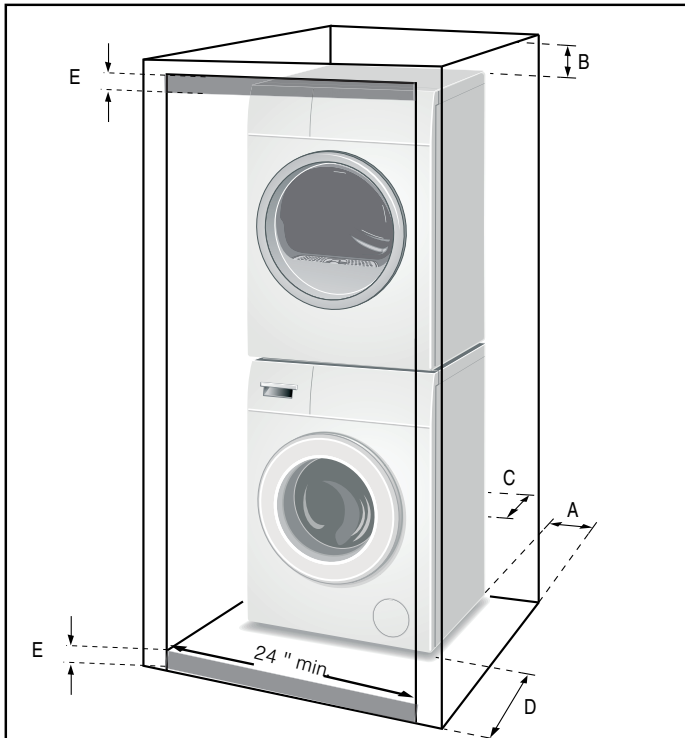
#### ▲ CAUTION

- Use only the dryer stacking kit noted in this User Manual's Accessories section.
- Do not stack washer on top of dryer.
- Do not stack washer on top of another washer.
- Ensure washer transportation bolts have been removed and washer does not vibrate excessively.

For shortest drying times keep closet door open while dryer is operating.

**NOTICE:** When closet doors are closed louvered areas only allow minimal drying results (expect long drying times).

### Closet: Stacked, Stand alone or Side by Side



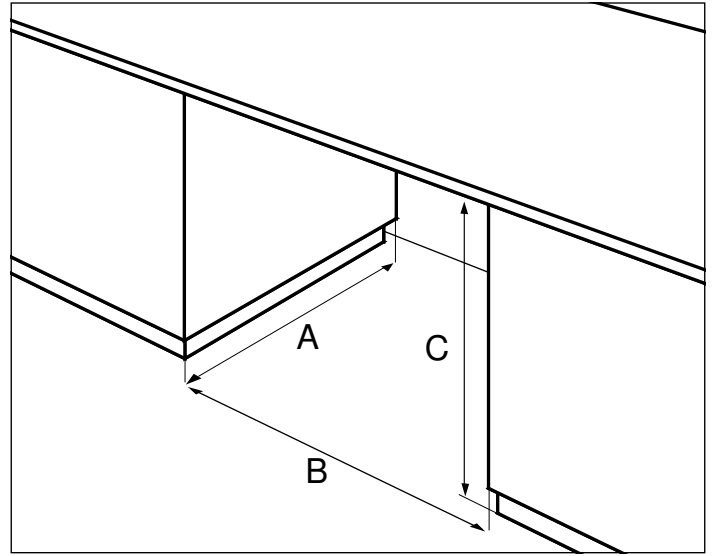
Label	Description	Inches	cm
A	Both Sides	0.5	1.3
B	Top	6.25	16
C	Rear	3	7.5
D	Front	0.5	1.3

#### Minimum door undercut (louvered area)

E	Undercut: Top and Bottom	1.25	3.2
---	--------------------------	------	-----

**NOTICE:** Louvered areas of equal total sizes and split between upper and lower portions of door are permitted.

### Under counter (Preferred)

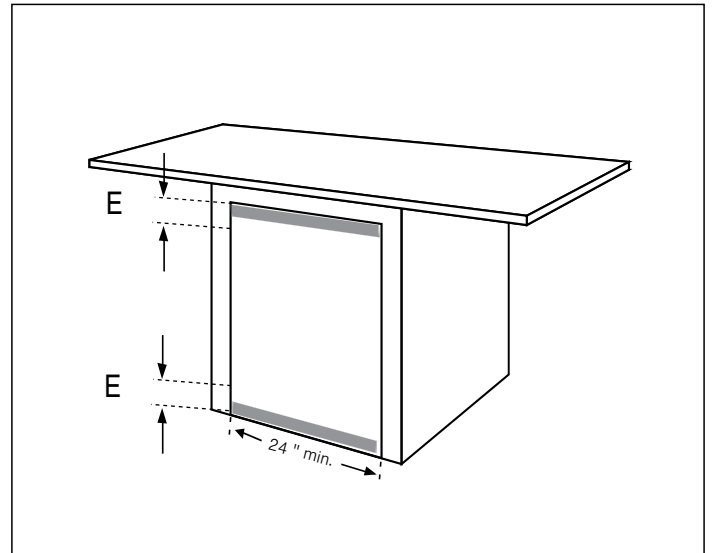


Front of the appliance fully open.  
No doors or coverings.

#### Minimum opening dimensions

A	28 in.	71.1 cm
B	23.8 in.	60.5 cm
C	34.5 in.	87.6 cm

### Under counter (Less Desirable)



For shortest drying times keep cabinet door open while dryer is operating.

**NOTICE:** When cabinet door is closed louvered areas only allow minimal drying results (expect long drying times).

#### Minimum door undercut (louvered area)

E	Undercut: Top and Bottom	1.25	3.2
---	--------------------------	------	-----

**NOTICE:** Louvered areas of equal total sizes and split between upper and lower portions of door are permitted.

---

# INSTALLATION INSTRUCTIONS

READ AND SAVE THESE INSTRUCTIONS

## Introduction

Read these installation instructions completely and carefully before starting to install your new dryer. The information contained can save you time and effort and will help to ensure optimum performance of your new dryer. Be sure to observe all warnings and cautions.

# WARNING

---

## ▲ WARNING

RISK OF FIRE, ELECTRIC SHOCK OR INJURY TO PERSONS

- To reduce the risk of fire, electric shock or injury to persons, read the Important Safety Instructions at the beginning of this manual before installing or operating this appliance.
  - To reduce the risk of severe injury or death, follow all installation instruction.
  - Clothes dryer installation must be performed by a qualified installer, according to these instructions and according to all local codes.
  - In addition to the installation and safety information in this manual, the local water and electric authorities (services) may have special requirements that must be followed.
  - Install the clothes dryer according to these manufacturer's instructions and local codes.
  - The appliance contains R290, a refrigerant that is environmentally friendly but flammable.  
Keep open fire and ignition sources away from the appliance.
  - Your dryer is supplied with a specific power adapter that is only to be used with the Bosch Washers and Dryers having NEMA 6-15P cords. Any other use of this power adapter is prohibited. Read and follow the Important Safety Instructions supplied with the Power Adapter.
- 

---

## ▲ CAUTION

- The appliance is heavy. Do not lift it by yourself, use additional help and care when lifting and positioning.
  - If in doubt, have the appliance installed by an authorized service provider.
  - Take care to not damage the appliance. Do not hold on to protruding parts (e.g. door) when lifting. Do not push against the appliance door glass due to risk of damage.
  - Do not install the appliance outdoors or in an area exposed to freezing conditions.
  - If freezing conditions exist where appliance is located all drain water must be removed from hoses, sumps, pumps, etc.
  - Hidden surfaces may have sharp edges. During service wear gloves and use caution when reaching inside the dryer housing.
- 

These installation instructions are intended for use by qualified installers. In addition to these instructions, the installation must comply with:

- for the United States - National Electrical Code, ANSI/NFPA70 - and latest editions of the state and municipal and/or local regulations.
- for Canada - Canadian Electrical Code C22.1 - and the latest editions of the provincial, municipal and/or local regulations.

## Before installing the dryer

### Unpacking the appliance

---

## ▲ CAUTION

Remove the appliance packaging carefully to prevent damage to the surfaces.  
After removing the packaging, immediately remove all objects from the drum.

---

Check the dryer for transportation damage. Do not connect the utilities (power or drain) to a dryer which is visibly damaged. If in doubt, contact your dealer.

## Waste disposal

### Disposal of Packaging Materials

After unpacking your new appliance dispose of the protective packaging materials in an environmentally friendly way. Ask your dealer or inquire with your local authority regarding currently acceptable means of disposal.

---

#### ▲ WARNING

##### WARNINGS FOR CHILDREN

Do not let children play with packaging and associated parts to avoid risk of choking or suffocation.

---

### Disposal of Your Old Appliance

Your old appliance can be recycled if it is no longer to be used. Prior to disposing of your old appliance observe the following precautions to reduce safety risks.

---

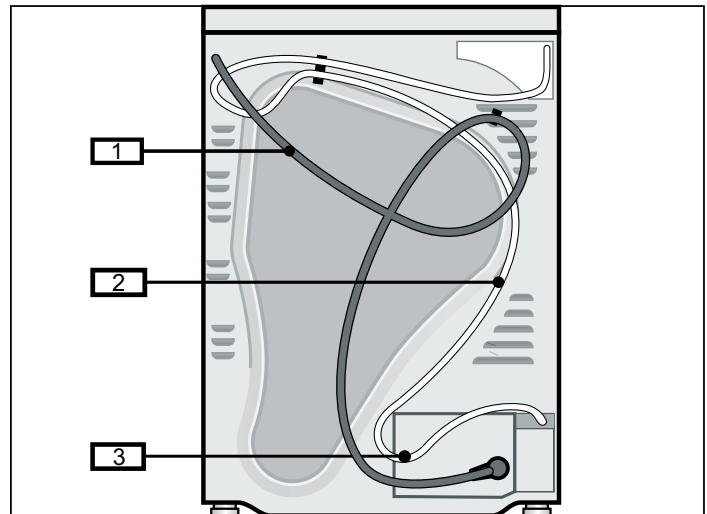
#### ▲ WARNING

##### TO AVOID RISK OF INJURY OR DEATH, DO THE FOLLOWING

- After unplugging the old appliance, remove the electric power cord and dispose of properly.
  - Remove the door or permanently disable the door lock to prevent children from being locked inside.
  - The appliance contains R290, a refrigerant that is environmentally friendly but flammable. If it is not disposed of correctly fire may result. Dispose of the appliance safely by not damaging the refrigerant circuit.
- 

## Parts provided with your dryer

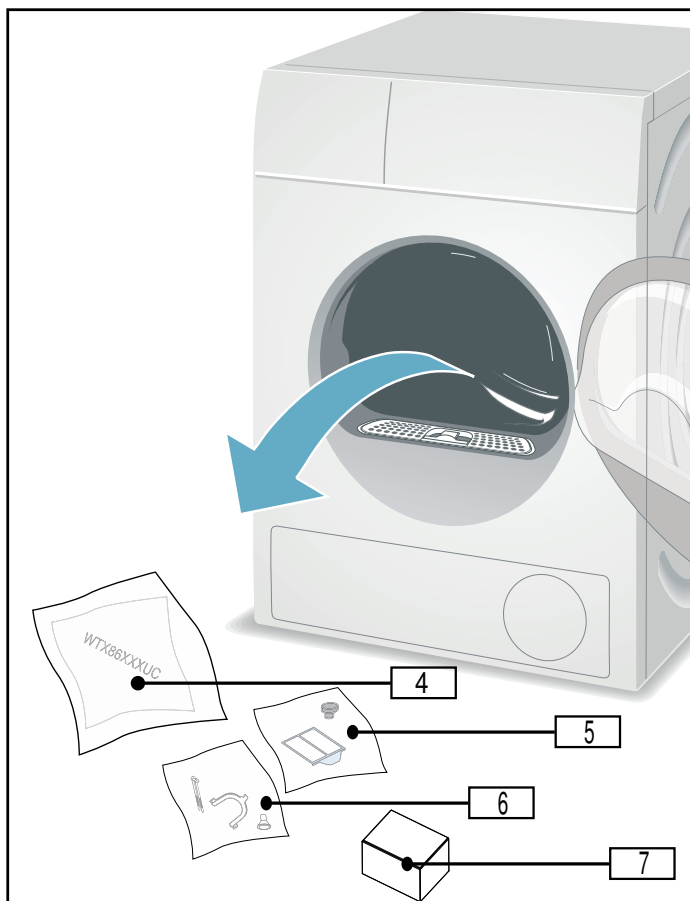
### Back side of the dryer



- 1 Power cord with plug
- 2 Drain hose connected to the dryer
- 3 Drain hose. Remove from upper right tank connection to drain into customer's drain pipe/system

## Dryer drum contents

A literature pack is shipped in the dryer drum. Be sure to remove this item before using the dryer.



- 4 User Manual and Product Registration
- 5 Tank Kit
  - Blue filter
  - Rubber plug
- 6 Drain Set Pack:
  - (2) plastic ties for securing drain hose
  - Plastic elbow
  - Plastic connector for alternate drain connections (see hose installation instructions).
  - Summary of drain hose installation instructions
- 7 Power Adapter:
  - Supplied Power Adapter
  - 2 spare fuses
  - Instruction sheet

## ⚠ WARNING

RISK OF FIRE, ELECTRIC SHOCK OR INJURY TO PERSONS

- The supplied Power Adapter is intended to be used only for powering the Bosch Washers and Dryers having NEMA 6-15P cords. This Power Adapter is unique as it allows for both the Dryer and Washer to plug into the home's existing 4-prong dryer receptacle. If the home has an existing 3-prong dryer receptacle it and its complete branch circuit must be changed to a 4-prong circuit.
- Use only the Bosch replacement fuses in the Power Adapter (Customer Service part number 10013781).
- If any parts are missing please notify your dealer immediately.

**Tip:** For correct adapter installation see → *Electrical Connections; Page 18*

## Accessories for your appliance

### Drying rack

A drying rack placed inside the dryer for drying wool items, shoes, etc. is available.

Drying rack item number: **WMZ20600**

### Pedestal

The dryer can be mounted on a Bosch pedestal, noted below, for easier loading and unloading (see washing machine user manual for unique pedestal model number for the washer).

Pedestal item number: **WMZ20500 or replacement WTZPW20D**

### Stacking kits

The dryer can be stacked on a Bosch washer of the same dimensions to save space. Only the below Stacking kits must be used when stacking this dryer on a Bosch washer.

Stacking kit without a shelf: **WTZ20410UC**

Stacking kit with a shelf: **WTZ11400UC**

### Power Adapter

The Power Adapter is for plugging into home's existing 4-prong receptacle and has two power outlets, one each for your current Bosch Dryer and Washer to plug into.

Power Adapter item number: **WTZPA20UC**

**Tip:** Your Bosch dryer comes with the Power Adapter included in the drum. The accessory number is given here only if it is lost or damaged and a replacement is needed.

Accessories can be purchased from Customer Service or your local dealer.

→ *Customer service; Page 4*

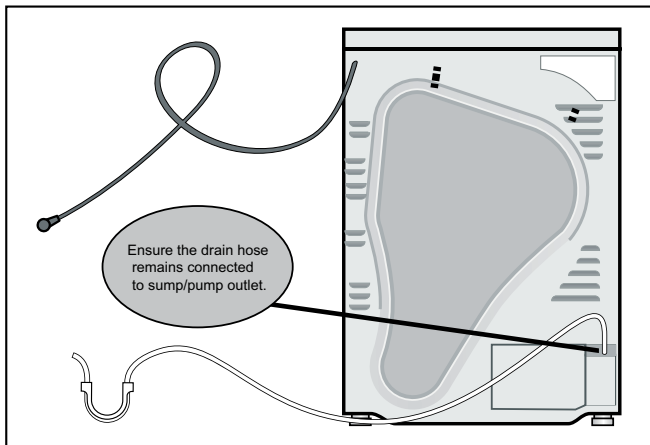
## Installation - step by step and check list

Review the following list and check off each step as it is completed during installation, if necessary.

1. Unpack the dryer.
2. Remove all objects from the dryer drum.
3. Check the dryer for visible damage.
4. Position the dryer near the installation location.
5. Disconnect the power cord and drain hose from their clips on the back of the dryer.

### ⚠ CAUTION

Do not disconnect the drain hose from the sump/pump connection at the bottom of the dryer.



**NOTICE:** Do not reuse an old or different drain hose. Only use the drain hose included with the dryer.

6. Disconnect the drain hose from the right top corner on the back of the dryer.
7. Connect the outlet end of the drain hose to a standpipe or other drain inlet. Examples are shown below.

### ⚠ CAUTION

APPLIANCE DAMAGE COULD OCCUR IF DRAIN WATER FLOWS BACK INTO THE APPLIANCE  
In all drain conditions, scenarios, or connections you must ensure:

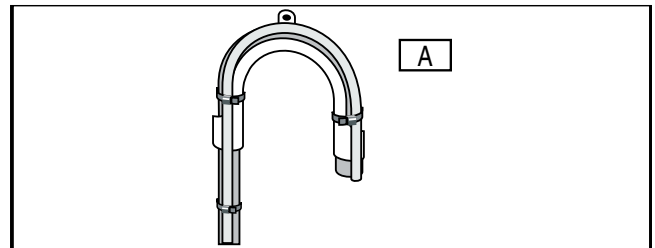
- The drain water from the hose is free flowing and not obstructed allowing adequate water flow.
- Drain opening must not be sealed in any way. It must be open to avoid a back siphon condition.
- The end of the drain hose does not protrude into the pumped out or standing water.
- Be sure to follow all local codes and regulations in draining the condensate water to a suitable drain.

## Examples of connections:

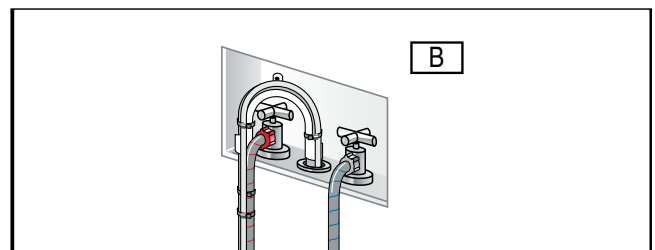
- Plumbing box or Standpipe connection:  
For most plumbing box installations (with adjacent washer) the plastic elbow supplied with the dryer will not be used and must be removed from the dryer drain hose.
1. Fasten the dryer drain hose to the washer drain/elbow as shown in picture "A". Secure with plastic ties supplied.

### ⚠ CAUTION

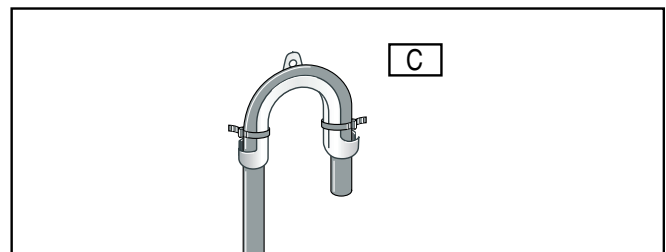
Do not over tighten plastic ties pinching or causing a restriction in the drain hose.



2. Place drain hose assembly into standpipe as shown in picture "B".

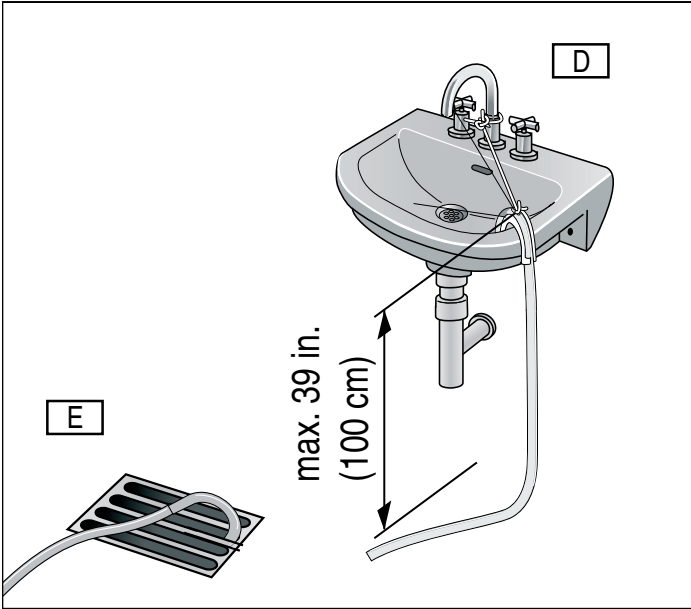


- Sink/Basin or Floor drain:  
If using the elbow supplied on the hose re-position elbow closer to the drain end of hose and fasten with the plastic ties as shown in picture "C".



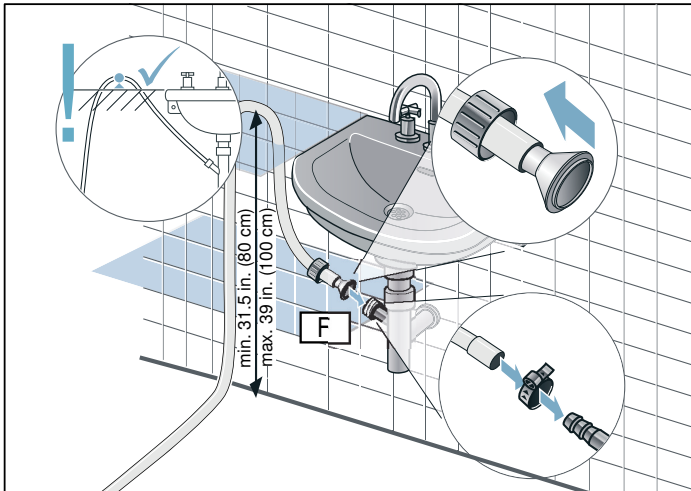
Secure hose and/or elbow as shown below. Sink "D" or floor "E".

**NOTICE:** Examples shown are for reference only. Not all fittings, connectors, nuts, brackets, ties, etc. are supplied to accommodate every application.



Maximum height of drain is 39 in. (100 cm).

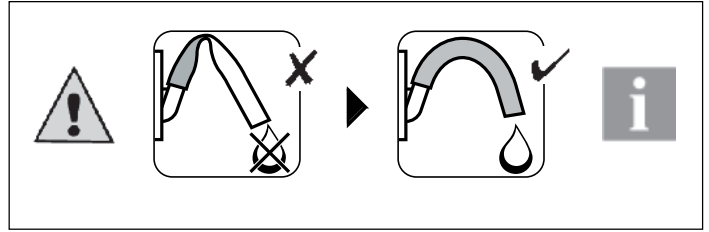
- Sink Drain Pipe:  
Attach and secure drain hose as shown below in picture "F".  
Use a standard hose clamp which can be purchased from your local hardware store.



Minimum height of drain for installation shown above is 31.5 in. (80 cm). Maximum height of drain is 39 in. (100 cm).

**NOTICES**

- Examples shown are for reference only. Not all fittings, connectors, nuts, brackets, ties, etc. are supplied to accommodate every application.
- Ensure there are no kinks or crimps along the entire length of hose.



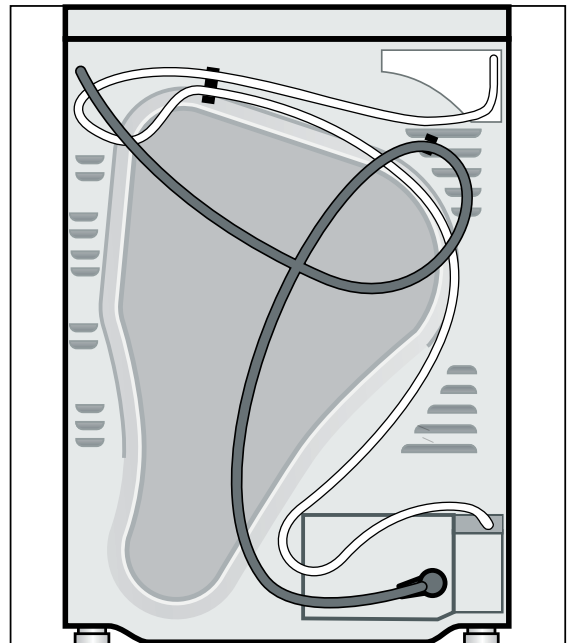
- If installed in an upper floor of a multi-story building, the dryer should be installed on a drained floor to prevent water damage to lower floors in the event of a leak.

**Using the "tank" to collect and drain condensate water:**

**NOTICE:** If the supplied drain hose is used for draining into the home's standpipe or other drain system, the tank does not need to be emptied. Water collection is optional and instructions to do so are explained here.

The dryer comes with the drain hose connected to the tank inlet at the top and back of the dryer. If you would like to use the tank for collecting and emptying the condensate water, leave this connection as it is delivered and shown in the picture below.

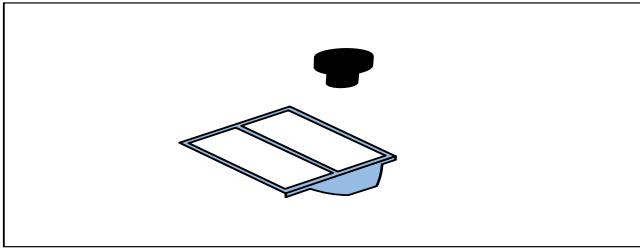
Check and ensure the hose is connected completely on the entire length of the hose barb.



If you do not have a drain system or would like to use the tank to collect the condensate water for you to empty, follow the below instructions.



1. Remove accessories from drum and locate the Tank Kit containing the blue filter and rubber plug.

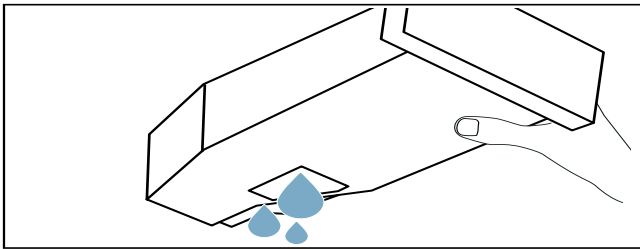
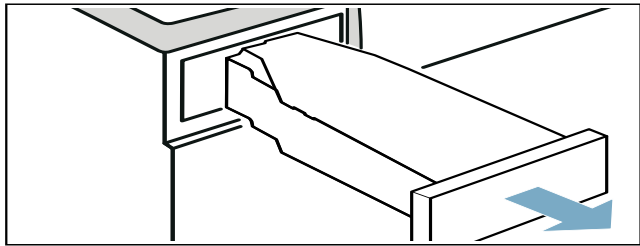


#### Installing the tank plug and filter in place.

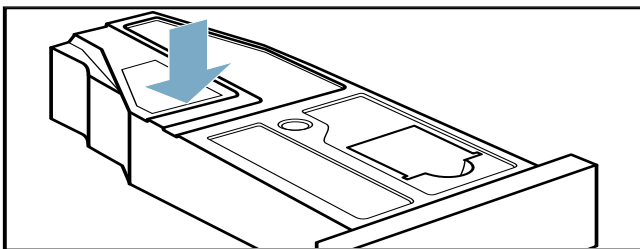
#### ⚠ CAUTION

Condensation water is not suitable for drinking and may contain lint. Do not drink the condensation water.

2. Remove the tank and empty it.

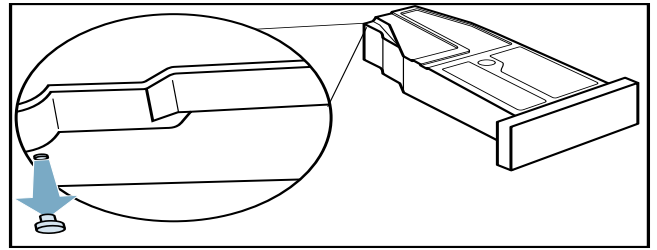


3. Take the blue filter from the Tank Kit and install it in the working position as shown in the picture below. Make sure it snaps completely in place.

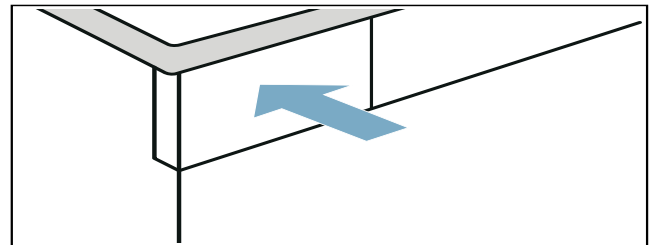


4. Locate the small black plug from the Tank Kit.

5. Turn the Tank over and you will see a small hole for the plug to be inserted into. Insert the plug into the hole. Ensure it is completely inserted and will not fall out.



6. Check that both the blue filter and black plug are fully in their correct positions and insert the complete tank into its position in the dryer.



Ensure the tank is pushed back into the dryer until you feel it lock in place

7. Now you are ready to use the tank for collecting all the condensate water from the drying process.

**NOTICE:** If you change the drain system to only use the tank you are responsible for emptying the tank. The tank must be emptied at the end of every drying cycle. It may require additionally emptying during the drying cycle depending on the size and initial moisture content of the load. The total capacity of the tank is approximately 1-1/4 gallons (4.75 liters).

When using the tank only for collecting and draining the water, the blue filter is required for the Self-Cleaning system. It is important to clean this filter periodically.

8. To clean the blue filter simply lift it up to remove it from its working position, rinse out and wipe clean and reinstall it as instructed above. Make sure it snaps completely in place.

#### ⚠ CAUTION

If the blue filter is not inserted completely into its working position lint can travel to the condenser, during the Self-Cleaning process, and clog/damage it.

**Tip:** If you want to use the drain hose to drain the water in the future, simply reverse the installation steps above and do all steps from the previous chapter  
→ *Installation - step by step and check list; Page 15*

## Electrical Connections

### Power Cord

The attached power cord is a standard NEMA 6-15P cord and is UL approved and listed in the USA and Canada. It meets the following requirements:

- 208-240 volt rated;
- 15 amps.

### NOTICES

- This appliance is restricted to being powered by the supplied power cord noted above.
  - There are two allowable methods to connect the appliance cord to power:
1. If the home has an existing 4-prong, 30A Dryer receptacle use the supplied Power Adapter. Plug the adapter into the 4-prong receptacle (Line side) and then plug the Bosch Dryer and Washer power cords into the adapter (Load side). See following images of Power Adapter for Line/Load side locations and appliance cord placement.

#### NOTICE:

This adapter can only be used with a 4-prong receptacle. If the home has an existing 3-prong dryer receptacle it and its complete branch circuit must be changed to a 4-prong circuit.

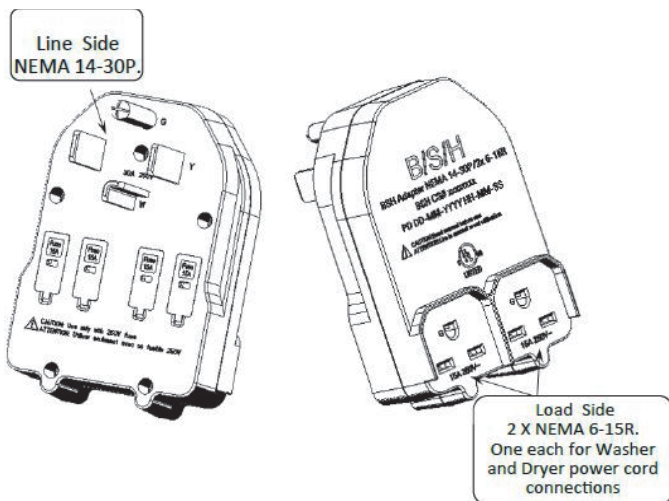
2. Use an existing individual 240V, 15A minimum branch circuit having a NEMA 6-15R outlet (or choose to have one installed).

---

### ⚠ WARNING

TO REDUCE RISK OF FIRE OR ELECTRIC SHOCK. Do not reuse this Power Adapter with a new purchase of a Dryer. The old Power Adapter must be discarded with the old Dryer. A new Power Adapter must be used when a new Dryer is installed.

---



## ALL ELECTRICAL CONNECTIONS AND CIRCUITS

---

### ⚠ WARNING

#### ELECTRIC SHOCK HAZARD

- Do not pull on the power cord to unplug the dryer.
  - Protect the power cord from physical damage such as being twisted, kinked, pinched, or walked on.
  - DO NOT use an extension cord to connect the dryer to the power supply.
  - Make sure:
  - The power cord fits into the outlet/receptacle.
  - The home's internal power supply circuit wire size is sufficient and electrically grounded.
  - Do not cut, remove or bypass the grounding prong on the power cord end.
  - Do not modify the plug provided with the appliance; if it will not fit the outlet, have a proper outlet installed by a qualified electrician.
  - The power cord must only be replaced by a qualified service provider or licensed electrician to help avoid a fire/electric shock hazard. Use only manufacturer recommended replacement power cords purchased through our Customer Service department.
  - Do not use NEMA 14-30P (4-prong) nor 10-30P (3-prong) power cords on this appliance.
  - Do not reuse old power cord.
  - Do not make a sharp bend or crimp wiring or conductors at connections.
- 

---

### ⚠ WARNING

#### ELECTRIC SHOCK HAZARD

To reduce the risk of electrical shock:

- Only pull out the power cord by the plug end and never by the cord, as this could damage it.
  - Never touch or hold the plug end or power cord with wet hands.
  - Never unplug the plug end during operation.
- 

---

### ⚠ WARNING

#### ELECTRIC SHOCK HAZARD

Improper connection of the equipment-grounding conductor can result in a risk of electric shock. Check with a qualified electrician or servicer if you are in doubt as to whether the appliance has been properly grounded.

---

## GROUNDING INSTRUCTIONS

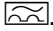
### ⚠ WARNING

#### ELECTRIC SHOCK HAZARD

This appliance must be electrically grounded. In the event of malfunction or breakdown, grounding will reduce the risk of electric shock by providing a path of least resistance for electric current.

This appliance is equipped with a cord that has an equipment grounding conductor and a grounding plug.

The plug must be plugged into an appropriate outlet that is properly installed and grounded in accordance with all local codes and ordinances.

If a ground fault circuit breaker is used, ensure it has this symbol: .

Only this symbol can assure compliance with all current regulations.

SAVE THESE INSTRUCTIONS!

## Leveling the dryer

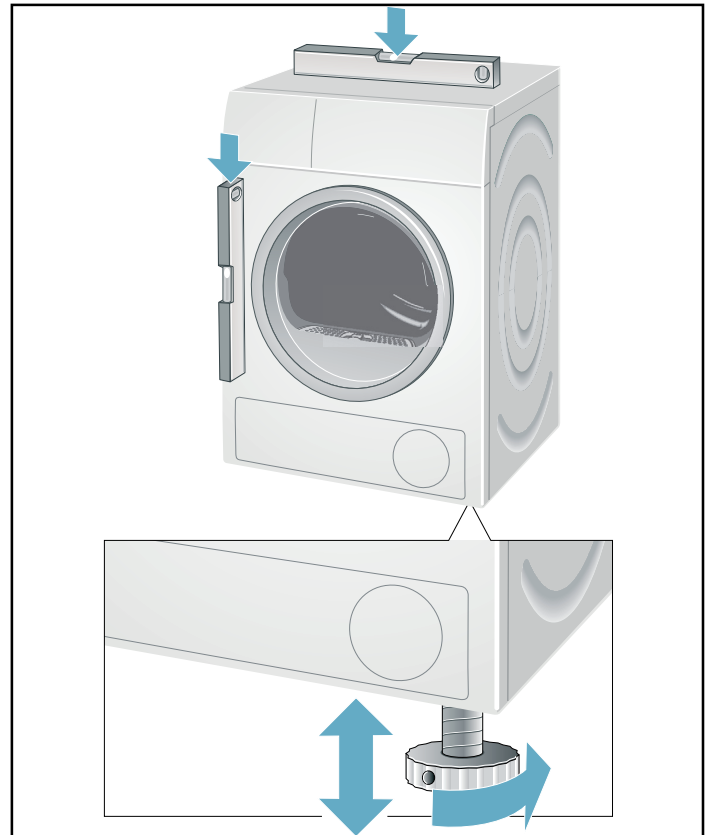
### Importance of leveling the dryer

It is important that your dryer is level and that all four dryer feet press with equal pressure against the floor. This will help assure the quietest, most vibration-free use of your dryer.

### To adjust the dryer feet:

1. Install the dryer on a level and solid surface, preferably in a corner of a room.
2. If the floor is uneven (or not level) adjust the dryer feet as required to level the dryer. Do not place anything under the dryer feet to help level the dryer.
3. Extend the dryer feet no more than is necessary. The more the feet are extended, the more vibration the dryer will experience. Start with the dryer feet turned all the way in and adjust each foot as necessary.
4. Use a bubble level to check the top of the dryer to make sure it is level side to side and front to rear.

5. Press down on each corner of the dryer top to make sure the dryer does not "wobble". There should be no "give" or movement. All four dryer feet should press equally against the floor. This is just as important as the dryer being level to prevent vibration.



## Check heating system

1. Check that the drum is empty.
2. Close the dryer door.
3. Switch the dryer to the **Time Dry** program
4. Press the **Start/Pause** button.
5. After 15-16 minutes press the **Start/Pause** button and open the door.
  - If the interior of the dryer feels warm, the dryer has been connected properly. Press the center of the Program Selector to switch off the appliance.
  - If the dryer does not work, press the center of the Program Selector to switch off the appliance. Look in the Troubleshooting section of this user manual for hints in solving the problem.

## Preparing to transport the dryer - step by step

1. Press the center of the Program Selector to switch off the appliance.
2. Pull out power supply plug.
3. Place any accessories in the drum.
4. Close the door and secure with adhesive tape.
5. Screw the height-adjustable feet of the dryer into the housing to prevent them from being damaged during transportation.

### Removing residual water from dryer

1. Pull out the condensation tank and empty it.
2. Push the tank back in place until you feel it lock into position.
3. Switch on the appliance, select any drying program and press Start/Pause.
4. Wait for 5 minutes while condensation water is drained or pumped to tank.
5. Empty the condensation container, steps 1 and 2 above, again.
6. If installed, remove the drain hose from the stand pipe, washbasin or floor drain.→ Page 16-17

---

### ⚠ CAUTION

Secure the drain hose to the back of the dryer to prevent it from hanging loose or being damaged. Do not kink the drain hose.

---

7. Switch off the appliance.
8. Disconnect the appliance's power cord from the receptacle.  
The appliance is now ready to be transported.

---

### ⚠ CAUTION

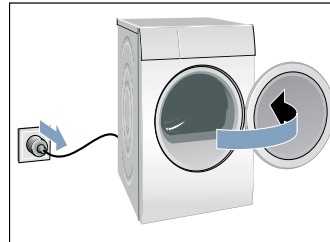
Risk of material damage/damage to the appliance. Despite draining, there will always be some residual water in the appliance. Any residual water may leak out and cause material damage; therefore, the appliance should always be transported upright.

---

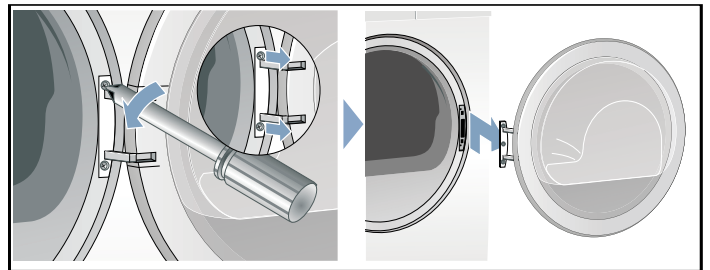
## Reversing the door - step by step

**Tip:** To reverse your dryer door side:

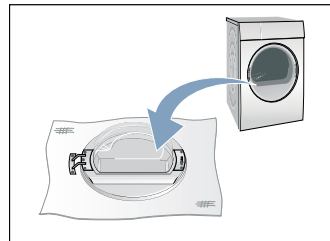
- Use only T20 (Torx) type screw driver to remove and reinstall door screws.
  - Do not use any other tools to reverse the door (hinge or latch).
1. Press the center of the Program Selector to switch **off** the appliance. Remove the power plug from wall outlet. Open the door completely.



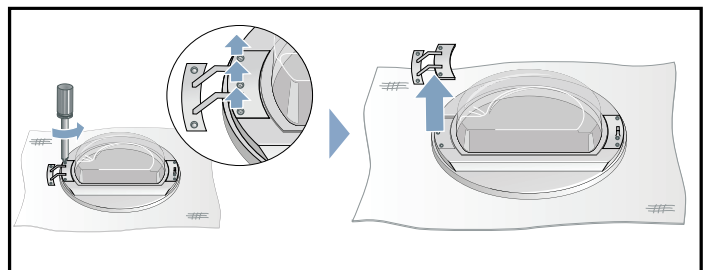
2. Remove the hinge screws from the dryer side then remove the door and hinge assembly from the dryer housing.



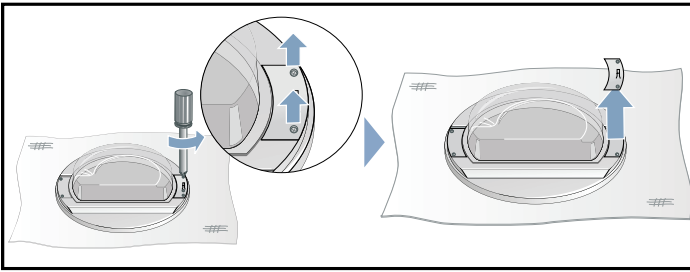
3. Place the door on a flat, smooth, secure surface such as a towel or cloth lying on the floor or table.



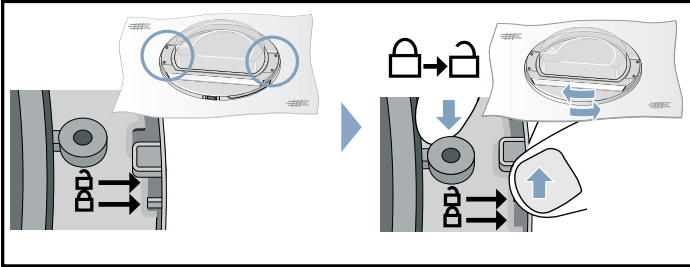
4. Remove screws from the hinge insert and then remove it from the door.



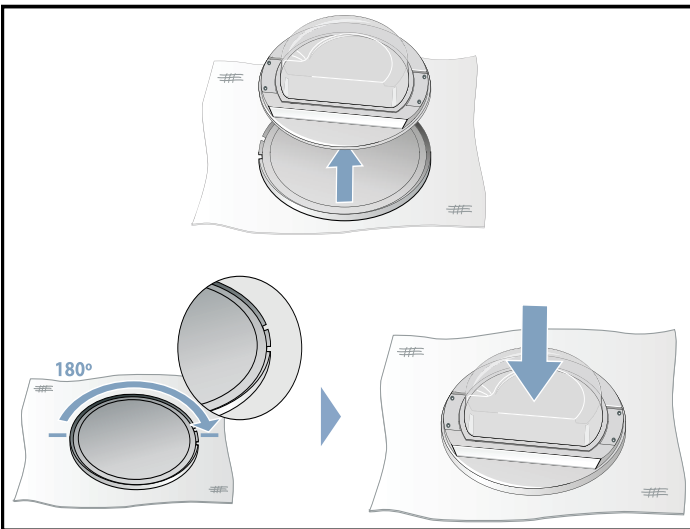
5. Remove screws from the hook insert and then remove it from the door.



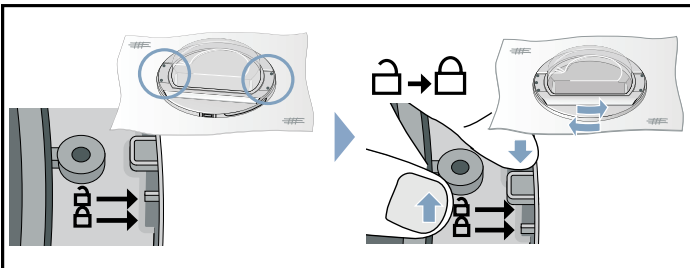
6. Follow the instructions in the images below to unlock the door ring from the door body.



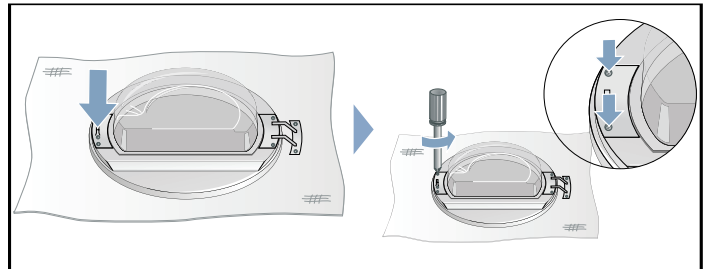
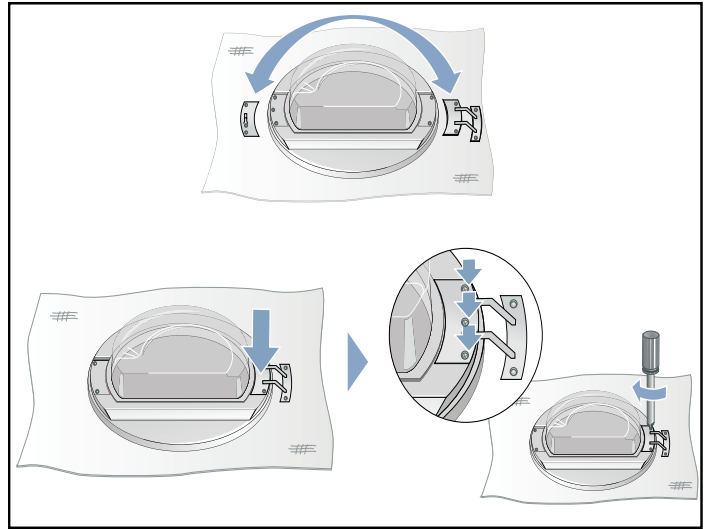
7. Separate the ring from the door body and rotate the ring 180° from its original position. Fit the ring back to the door body as shown below.



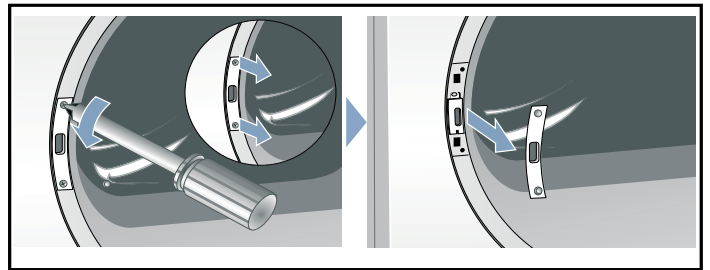
8. Follow the instructions of the images below to lock the door ring.



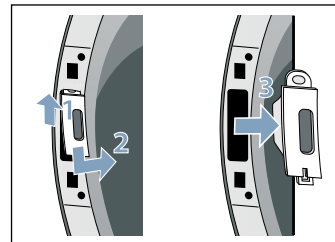
9. Place the hook insert in position adjacent to the handle slots/openings and the hinge insert in the opposite position as shown. Reinstall the original screws.



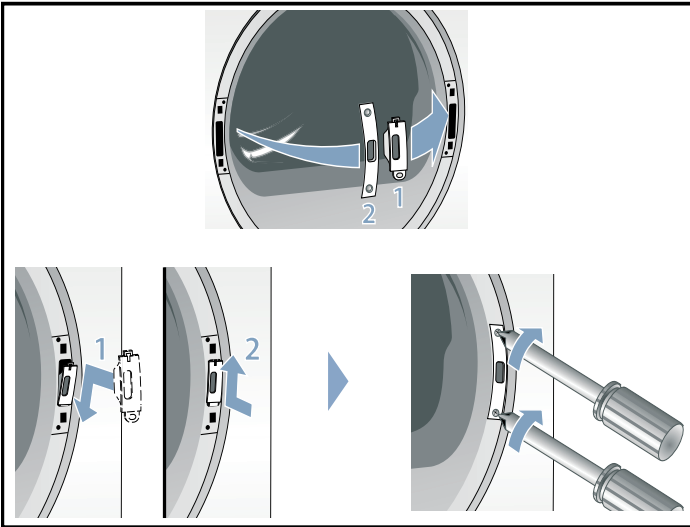
10. Remove screws from the door latch cover and then remove it from the dryer housing.



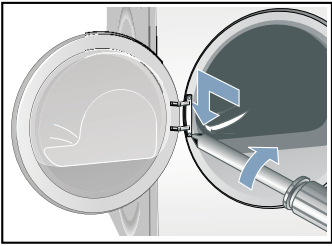
11. Remove the door latch from the dryer housing.



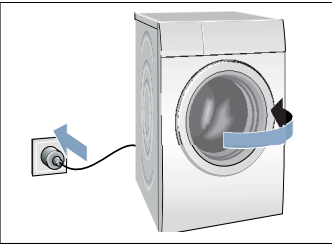
**12.**Install the door latch (1) and then door latch cover (2) on the opposite side of the door opening.



**13.**Install the door and hinge assembly back on the dryer with the original screws.

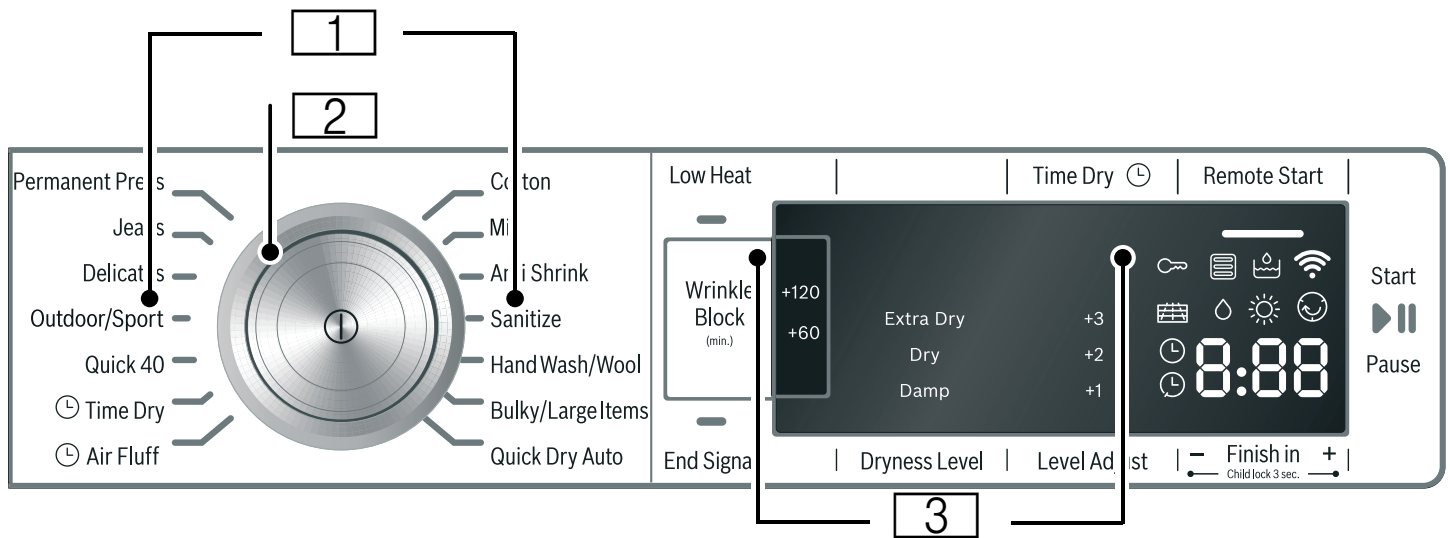


**14.**Confirm the door closes and latches in place. Plug in the dryer to operate it.



# Getting to know your appliance

## Control panel



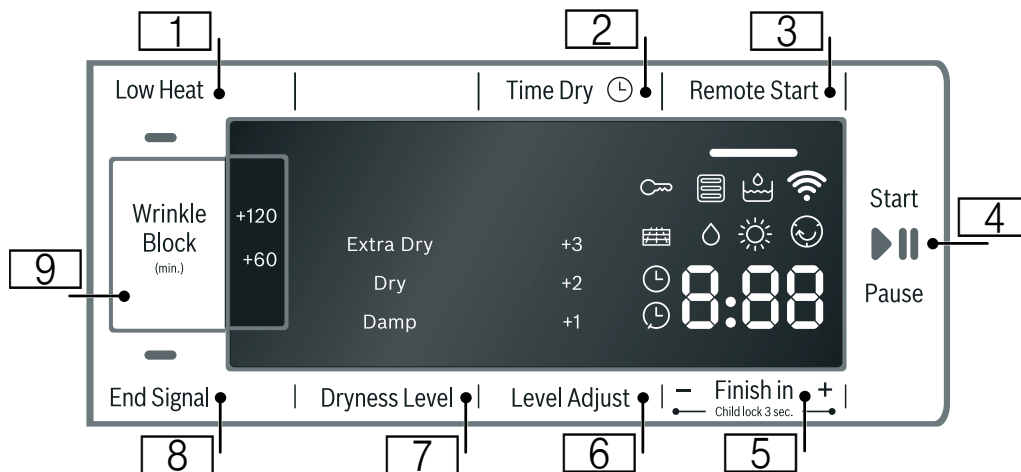
1 Programs

2 Program Selector

Center is pressed to power the appliance ON or OFF and dial turns in both directions to select a program.

3 Display Panel with Buttons

## Display area







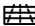



### Buttons

Button	Description	Indicator
1	Select <b>Low Heat</b> .	—
2	Select <b>Time Dry</b> ⌚.	e.g. ⌚ 0:40
3	Select <b>Remote Start</b> . Remote start and Home Connect® settings	—
4	Select <b>Start/Pause</b> . <ul style="list-style-type: none"> <li>starts or pauses the selected cycle;</li> <li>indicator lamp on (steady) - cycle running, can be paused (if Child lock is not activated);</li> <li>indicator lamp blinking - option settings can be changed; Ready state (door closed, cycle can be started), cycle is paused (press to restart).</li> </ul>	▶
5	Select <b>Finish in</b> . End of program ("Finish in" time) after...h (hours) Press Finish in — and + at once for approximately 3 seconds to activate or deactivate <b>Child lock 3 sec..</b>	e.g. ⌚ 1h 🔒
6	Select <b>Level Adjust</b> .	OFF (no LED symbol shown), +1, +2, +3
7	Select <b>Dryness Level</b> .	Extra Dry Dry Damp
8	Select <b>End Signal</b> .	—
9	Select <b>Wrinkle Block</b> .	OFF (no additional time), +60, +120 minutes

For a detailed description, see → *Optional program settings; Page 37*



## Other indicators

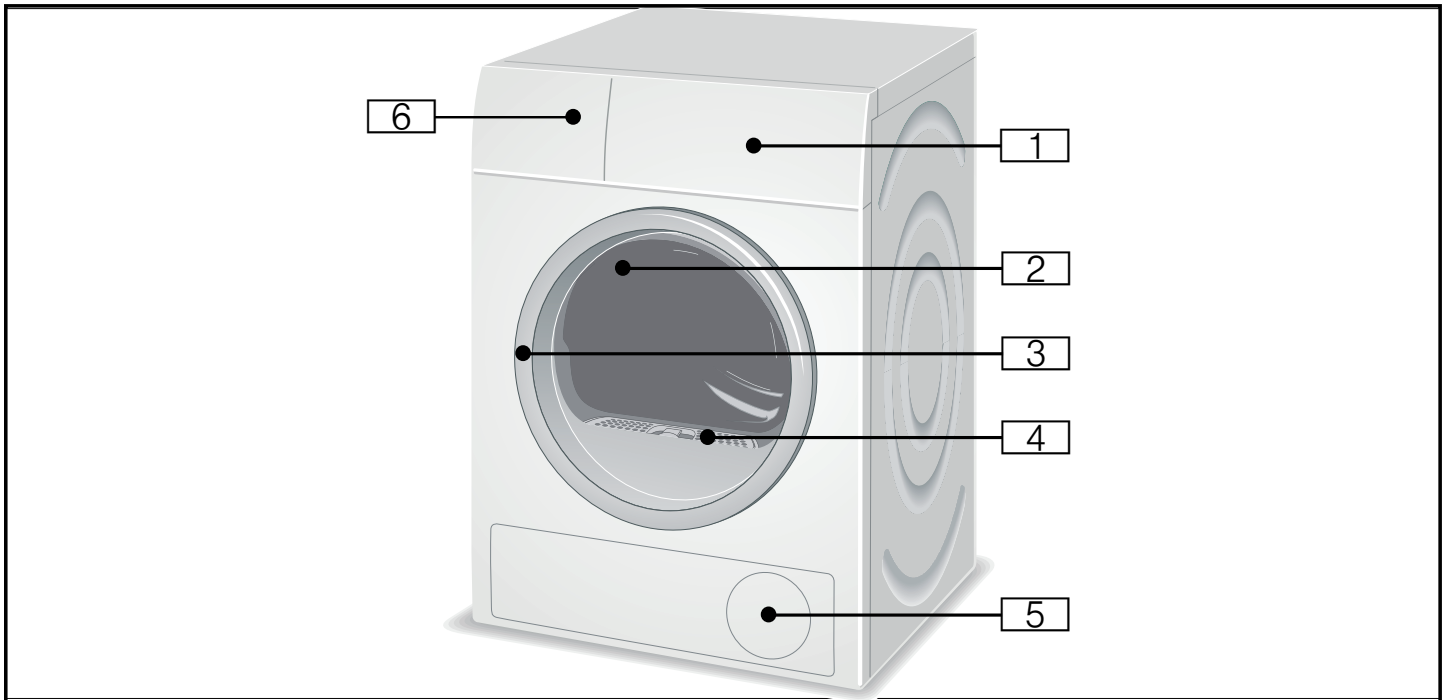
Indicator	Description
	<p>Lit: Child lock activated</p> <p>Flashing: A change to the programs or options is not allowed because Child lock is activated. Flashing will stop after a few seconds.</p>
	Clean lint filters.
	Tank is full and must be emptied or Drain System (pump, valve or drain hose) should be checked.
	<p>OFF: Wi-Fi is off.</p> <p>Flashing: The appliance is trying to connect to your home network or broadcasting "Home Connect" hot-spot.</p> <p>Lit: Wi-Fi is on and the appliance is connected to your home network.</p>
	<p>Self Cleaning of condenser in progress.</p> <p><b>NOTICE:</b> You may hear the sounds of the valve opening and water flushing during this Self-Cleaning process, this is normal and no need of concern.</p>
Drying cycle status sequence:	
	Drying process progressing. Textiles are damp.
	Drying process completing. Textiles nearly dry.
	Wrinkle Block phase activated
e.g. <b>1:40</b>	<p>Expected program duration in hours and minutes.</p> <p><b>NOTICE:</b> Drying time may vary from initial displayed time depending on the size of load, type of and mixture of fabrics and initial moisture content of the load.</p>
<b>- P -</b>	<p>Pause</p> <p>Shown when <b>Start/Pause</b> button is pressed on control panel, <b>Pause</b> is activated from App, or door is opened during the drying cycle. If you remove heated items from the dryer it is recommended to spread them out allowing the heat to dissipate.</p> <p><b>NOTICE:</b> If the door remains closed the drum may begin rotating 30 seconds after pausing to cool down the load and <b>Hot</b> will be displayed. This process can take up to 10 minutes and the program should not be changed during this time.</p> <p>Press the <b>Start/Pause</b> button on control panel or <b>Continue</b> in the App at any time to start the drying process again.</p>
<b>- 0 -</b>	Program end
<b>Hot</b>	<p>Cool Down</p> <p>Indicates dryer is operating to reduce the temperature of the load. This process can take up to 10 minutes. May appear if:</p> <ul style="list-style-type: none"> <li>• program is paused via the control panel or remote app, or</li> <li>• program is stopped or dryer is switched off via the remote control app.</li> </ul>

# OPERATING INSTRUCTIONS

## ▲ WARNING

RISK OF FIRE, ELECTRIC SHOCK, OR INJURY  
To reduce the risk of fire, electric shock, or injury to persons, read the IMPORTANT SAFETY INSTRUCTIONS and OPERATING INSTRUCTIONS before operating this appliance.

## Your new dryer



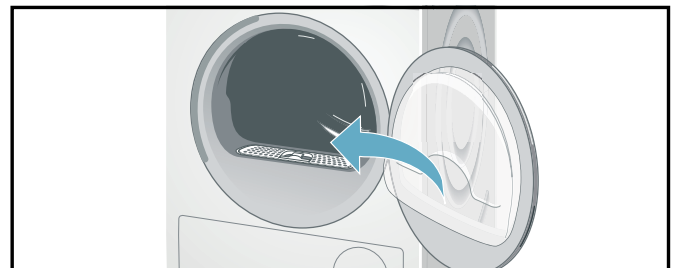
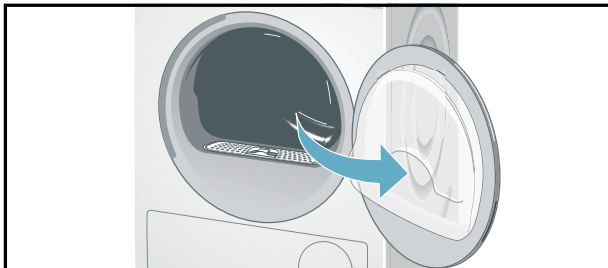
1 Control panel, display area, program selector

2 Drum with interior light (depending on model)

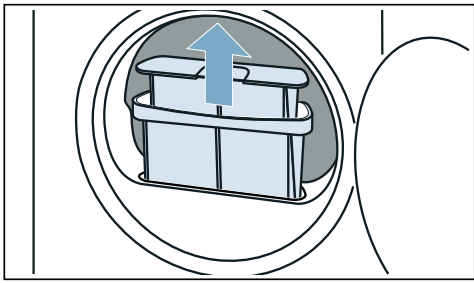
The interior light activates after the door is opened and after the program starts, it switches off automatically.

3 Open the door

Close the door



4 Lint filters



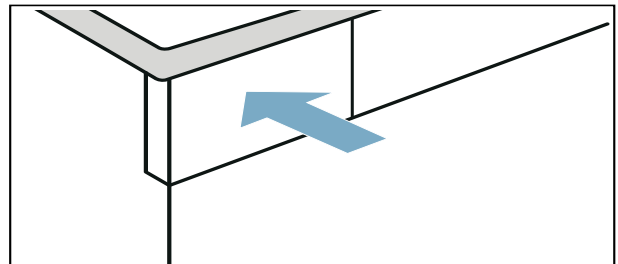
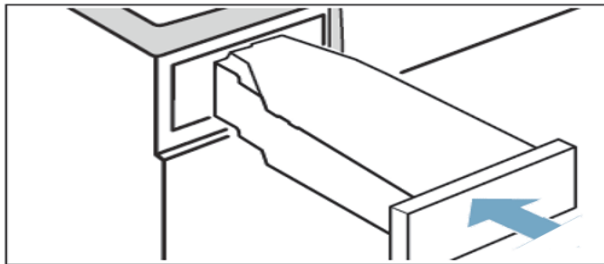
5 Air inlet

6 Tank

Your Heat Pump dryer is unique as it has a Self-Cleaning system for cleaning the condenser. This Self-Cleaning system uses the tank shown in position [6] to hold water used for flushing the condenser during the drying process.

As this is an important process the tank must remain in place and not be removed during the entire drying process.

**NOTICE:** If the supplied drain hose is used for draining into the home's standpipe or other drain system, the tank does not need to be emptied.



**▲ CAUTION**

Ensure the tank is pushed back in to the dryer until you feel it lock in place.

**▲ WARNING**

**BEFORE USING YOUR DRYER**

Read and follow all installation and operating instructions.

Check the machine. Never connect the utilities (power or water) to or start a damaged machine! Contact Customer Service!

→ *Customer service; Page 4*

Check to be sure the dryer drain hose is installed properly.

**Turning the dryer on and off**

Pressing the center of the Program Selector turns the appliance on and off. After switching on, turn the outer dial to choose a program. Switch off after the program has finished.

**Before using the dryer for the first time**

1. Read these operating instructions carefully.
2. Check that the supply voltage corresponds with the voltage specifications on the rating plate on the dryer, see top rear side of the dryer and/or rating plate label inside the dryer door.  
→ *Electrical Connections; Page 18*
3. Remove all objects from the drum.
4. Check the dryer for visible damage. If damage found contact your dealer.
5. Wipe the inside of the drum with a damp cloth.
6. Check heating system.  
→ *Check heating system; Page 19*
7. If the dryer does not work, press the center of the Program Selector to switch off the dryer. Look in the Troubleshooting section of the operating instructions for support.  
→ *Troubleshooting; Page 42*

## Temporary disconnection of the dryer

If you intend to go on vacation or are not using your dryer for an extended period of time, you should:

1. Turn off the circuit breaker.
2. Pull out the power supply plug if possible.
3. Clean the lint filters.

## Using program selector to choose a drying program

**NOTICE:** If the Child lock is activated, you must deactivate it before you can select a program.

→ *Child lock 3 sec.; Page 38*

Use the program selector to select the desired drying program. The dial turns in both directions and when a cycle is selected its time duration appears in the display.

## Program selection

For optimum drying results your dryer offers several different types of programs to choose from.

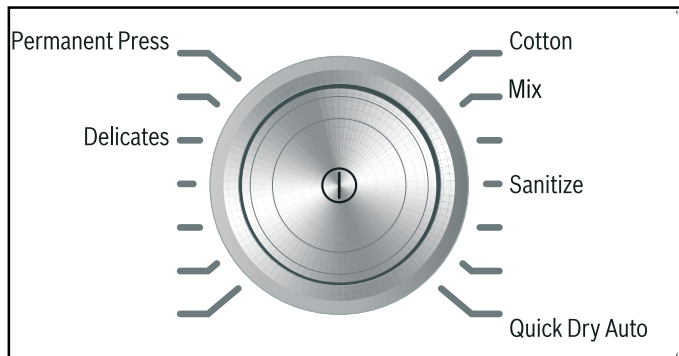
Select the required drying program from the program table according to the examples.

→ *Program selection table; Page 36*

### Automatic programs

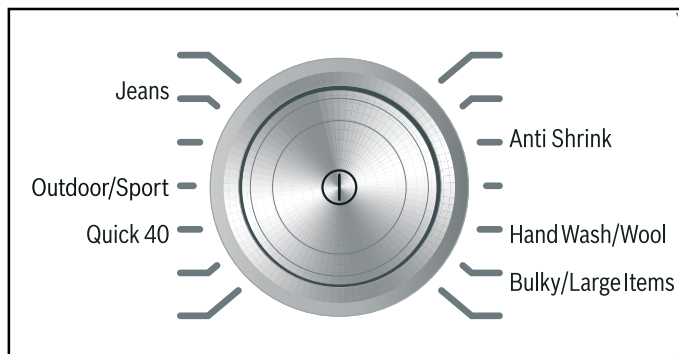
There are automatic programs for different types of textiles (e.g. Cotton, Permanent Press).

The program sequence of automatic programs is controlled by sensors. The duration of the program depends on the measured degree of moisture in the laundry and on the selected degree of dryness (e.g. Extra Dry).



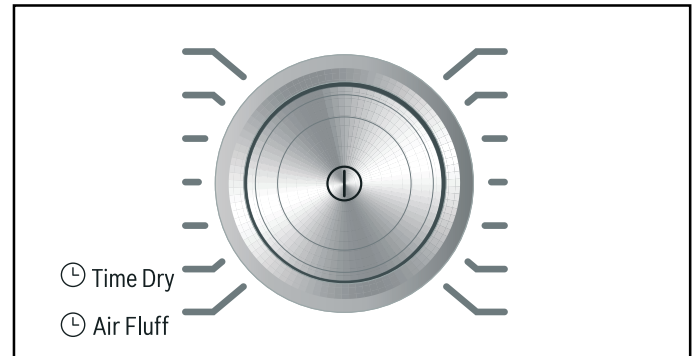
### Special programs

The programs Anti Shrink, Hand Wash/Wool, Bulky/Large Items, Quick 40™, Outdoor/Sport and Jeans are made for special type fabric loads.



## Time programs

Time programs run at specific temperatures and are suitable for delicate items, individual or a few small items and for adding additional drying time if necessary. The Time programs are Hand Wash/Wool, Air Fluff, Time Dry, and Quick 40.



## Selecting optional program settings

By selecting optional program settings, you can adjust the drying process to better suit the items you are drying.

The optional program settings can be selected and deselected depending if the setting is allowed (not all settings are allowed for all programs) and the cycle's progress.

The indicator lamps of the buttons light up if the setting is active.

For **Time Dry** ☹, **Finish in**, **Wrinkle Block** and **Low Heat** the settings are not retained after the appliance is switched off.

For **Dryness Level** the setting is retained for each program separately after the appliance is switched off (for fabric care this setting is not retained for the Cotton program).

For **Level Adjust** the setting is retained for each program separately after the appliance is switched off.

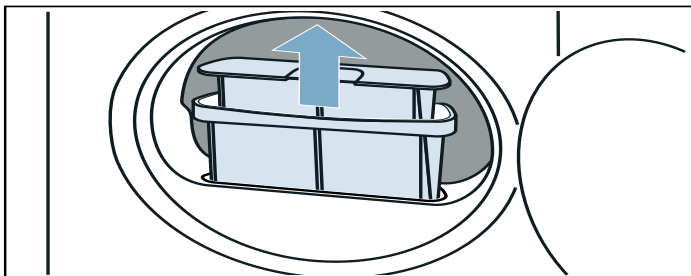
## Loading the laundry

### ▲ WARNING

#### RISK OF EXPLOSION

Do not dry laundry that has ever been in contact with solvents, oil, wax, grease or paint (e.g. nail varnish remover, stain remover, cleaning solvent, etc.).

#### 1. Check lint filters.



The filters should be cleaned after or before every drying process. Cleaning the filters reduces the drying time and saves energy.

→ *Cleaning the lint filters; Page 39*

#### 2. Load the laundry into the drum and close the door.

**Tip:** If the door has not been closed properly, the dryer will not start.



### Tips

After loading, close the door carefully so as not to trap any items between the door and the rubber seal. The door should be closed until a click is heard.

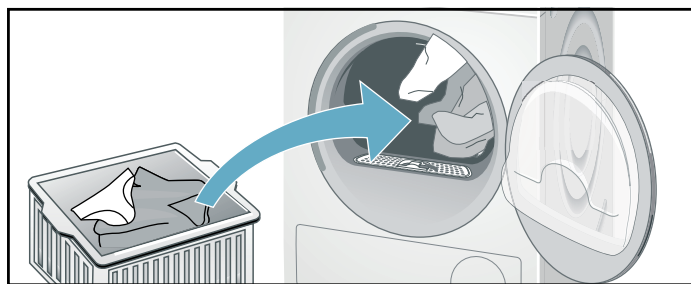
Foreign objects left in the drum may damage laundry. Before inserting any laundry, check to make sure no foreign objects are in the drum.

### Recommended Load Size

Recommended maximum load size can be found in the program selection table in this manual.

→ *Program selection table; Page 36*

## Load the laundry



Place laundry in the empty drum. Put each piece of laundry into machine separately.

For best results the laundry should be sorted according to type of laundry and desired degree of drying.

→ *Sorting the laundry; Page 35*

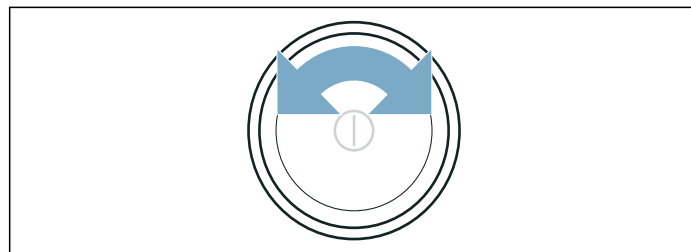
→ *Program selection table; Page 36*

→ *Level Adjust; Page 37*

## Starting the program

1. Switch on the appliance. Rotate program selector to the desired program. Select the program which corresponds to the laundry in the dryer from Program selection table.

→ *Program selection table; Page 36*





The **Start/Pause** indicator light starts flashing.

2. Press the **Start/Pause** button. Indicator lamp lights up and the cycle starts.

During the cycle, the display area indicates the estimated remaining time and, after starting the drying cycle, the cycle duration and the symbols for the cycle progress stay lit.

### NOTICES

- If you want to protect the cycle against inadvertent adjustment select the **Child lock 3 sec.** → *Child lock 3 sec.; Page 38*
- If  indicator lights up, clean the lint filters. → *Cleaning the lint filters; Page 39*
- If  indicator lights up, check the drain hose and its connections for restrictions and if the tank needs to be emptied. → *Maintenance of drain hose; Page 41*

3. If required, select **Low Heat** by pressing the button. → *Low Heat; Page 37*

4. If required, select **Wrinkle Block** by pressing the button. → *Wrinkle Block; Page 37*

## Indicator of program sequence

Bosch dryers use an advanced control system which continually monitors the laundry's remaining moisture. The current state of the process and status of the program is shown by indicator lights and 7-digit display.



## Selecting a different program

If you have inadvertently started the wrong program, you can change this as follows:

1. Press **Start/Pause**.

**NOTICE:** The drum will continue to rotate when the Cool Down process is in progress, even if the program is paused. The Cool Down process can be stopped at any time by opening the door.

2. Select another program and/or a different optional program setting.

**NOTICE:** Do not change the program during the Cool Down process.

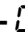
3. Press **Start/Pause**. The new drying cycle starts from the beginning.

## Cancel program

If required, you can cancel the selected program:

1. Press **Start/Pause**.
2. Press the center of the Program Selector to switch off the appliance.

## Program end

-  - appears in the display area and the Start/Pause button indicator lamp is off.



After the program end, press the center of Program Selector to switch off the appliance.

## Removing laundry/switching the appliance off

1. Open the door and remove the laundry.
2. Press the center of the Program Selector. Appliance is switched off and dryer light goes out.
3. Clean lint filters.  
→ *Cleaning the lint filters; Page 39*
4. Close the door.

**Tip:** If the display panel switches off and the Start/Pause button indicator is blinking at the end of a program, the Energy-saving mode is active. To activate the display, press any button.

→ *Environmentally friendly use of your dryer; Page 9*

# Home Connect®

This appliance is Wi-Fi-capable and can be remotely controlled using a mobile device.

You can use the Home Connect app to do the following on your appliance from your mobile device:

- Set up programs and start them.
- Adjust, activate and deactivate program settings.
- Query the status of programs.
- Adjust, activate and deactivate appliance settings.
- Switch off the appliance.

Before you can use the Home Connect functions, you will need to carry out the following steps:

1. Install the Home Connect app on your mobile device.
2. Register in the Home Connect app.
3. Connect your appliance to your home network automatically **or** manually (you only need to do this the first time).
4. Connect your appliance to the Home Connect app.

You can find information about the app on our Home Connect website [www.bosch-home.com/us](http://www.bosch-home.com/us) (USA) or [www.bosch-home.ca](http://www.bosch-home.ca) (Canada)

Home Connect services are not available in every country. The availability of the Home Connect function depends on the availability of Home Connect services in your country. You can find information on this at: [www.bosch-home.com/us](http://www.bosch-home.com/us) (USA) or [www.bosch-home.ca](http://www.bosch-home.ca) (Canada)

## Notes

- Please observe the safety precautions in this instruction manual and make sure that these are complied with even when operating the appliance via the Home Connect app while you are away from home. You must also follow the instructions in the Home Connect app.
- You cannot use the Home Connect app to make changes while the controls on the appliance are being operated. However, you can use the Home Connect app to see any adjustments made directly on the appliance itself.

## Calling up the Home Connect menu

In the Home Connect menu, you can create and view network connections, reset network settings, activate/deactivate Wi-Fi and find other Home Connect functions.

1. Switch the appliance on.
2. Press and hold **Remote Start** for at least 3 seconds. **RLT** appears in the display.

You are now in the Home Connect menu.

**Note:** Briefly press **Remote Start** to exit the Home Connect menu.

## Connecting your home network to the Home Connect app

Connect your appliance to the home network **automatically** or **manually** (you only need to do this the first time).

### Notes

- If your home network router has a WPS function, you can connect the appliance to your home network automatically.
- If your home network router does not have a WPS function, you need to connect the appliance to your home network manually.

You must then connect to the Home Connect app.

**Note:** To connect your appliance to the home network, **Wi-Fi** must be activated on the appliance. **Wi-Fi** is deactivated on the appliance by default and is activated automatically when you connect your appliance to your home network.


## Connecting to your home network automatically

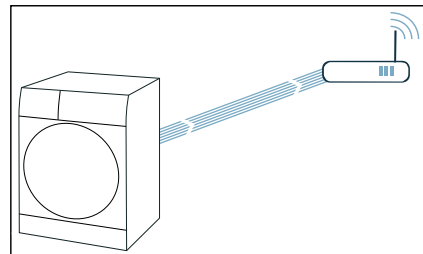
### Step 2.1

Ensure that you are in the Home Connect menu.


→ *Calling up the Home Connect menu; Page 31*

1. Press **Start/Pause**.

The appliance now attempts to connect to your home network.  flashes in the display.



2. Activate the WPS function on your home network router within the next 2 minutes.

If the appliance has connected to your home network successfully, **con ✓** and  appear in the display and light up continuously.

**Note:** If you are not able to establish a connection, check whether your appliance is within range of your home network. Try connecting automatically again or connect your appliance manually.

## Connecting to your home network manually

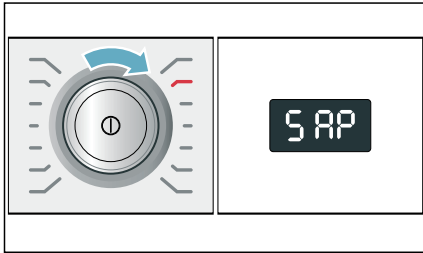
### Step 2.2

Ensure that you are in the Home Connect menu.

→ *Calling up the Home Connect menu; Page 31*

Make sure that you have opened the Home Connect app and are logged in.

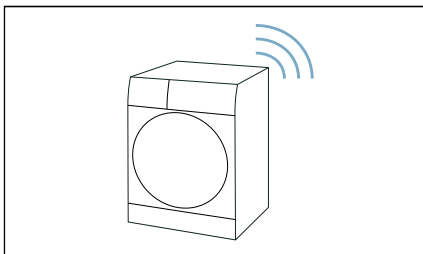
1. Set the program to position 2.



**S AP** (connect manually) appears in the display.

2. Press **Start/Pause**.

The appliance now sets up its own Wi-Fi network with the name (SSID) **Home Connect®**.

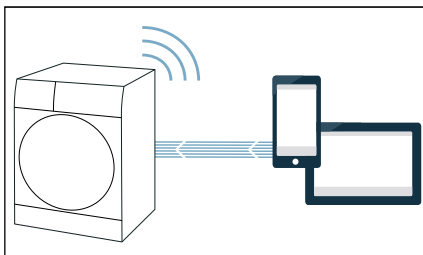


3. Call up the Wi-Fi setting on the mobile device.

4. Connect the mobile device to the **HomeConnect** Wi-Fi network and enter the password (key) **HomeConnect**.

Your mobile device now connects to the appliance.


The connection process may take up to 60 seconds.



5. Once you have connected successfully, open the Home Connect app on your mobile device and carry out the steps in the app.

6. In the Home Connect app, enter the network name (SSID) and password (key) for **your home network**.

7. Carry out the last steps in the Home Connect app to connect your appliance.

If the appliance has connected to your home network successfully, **CON ✓** and  appear in the display and light up continuously.

**Note:** If you are not able to establish a connection, check whether your appliance is within range of your home network. Try connecting manually again.

## Connecting to the Home Connect app

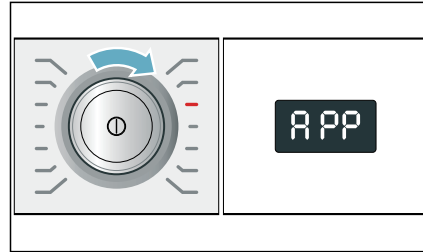
If your appliance is connected to your home network, you can connect it to the Home Connect app.

Ensure that you are in the Home Connect menu.

→ *Calling up the Home Connect menu; Page 31*

Make sure that you have opened the Home Connect app and are logged in.

1. Set the program to position 3.



**APP** (connect to app) appears in the display.

2. Press **Start/Pause**.

The appliance now attempts to connect to the Home Connect app.

3. Once your appliance is displayed in the app, carry out the last steps in the Home Connect app.

**Note:** If you were not able to establish a connection, check whether your mobile device is within range of your home network or is connected to this. Try connecting to the Home Connect app again.



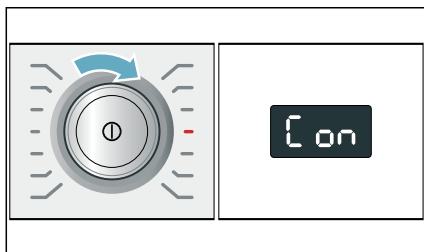
## Activating/deactivating Wi-Fi

If your appliance is already connected to your home network, you can activate or deactivate **Wi-Fi** on your appliance.

Ensure that you are in the Home Connect menu.

→ *Calling up the Home Connect menu; Page 31*

1. Set the program to position 4.



**on** (Wi-Fi function) appears in the display.

2. Press **Start/Pause**.

If **on** appears in the display, Wi-Fi is activated on the appliance. If **off** appears in the display, Wi-Fi is deactivated on the appliance.

### Notes

- If you connect to your home network, Wi-Fi is activated automatically.
- If Wi-Fi is activated, the appliance will not switch off automatically.
- If Wi-Fi is switched off on the appliance, it is not possible to use the Home Connect app to start or control the appliance remotely.
- If Wi-Fi is switched off and your appliance was previously connected to your home network, this connection will be re-established automatically when Wi-Fi is switched back on.
- If you activate this function, the energy consumption increases.

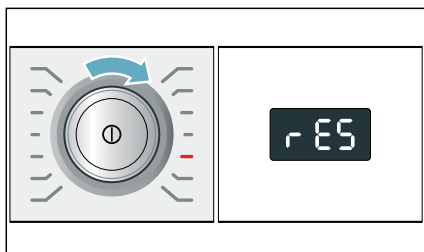
## Resetting your network settings

You can reset all of the network settings.

Ensure that you are in the Home Connect menu.

→ *Calling up the Home Connect menu; Page 31*

1. Set the program to position 5.



**rES** (reset network settings) appears in the display.

2. Press **Start/Pause**.

**YES** appears in the display.

3. Press **Start/Pause**.

**Note:** If you want to operate your appliance via the Home Connect app again, you will need to reconnect it to your home network and to the Home Connect app.

## Updating the software

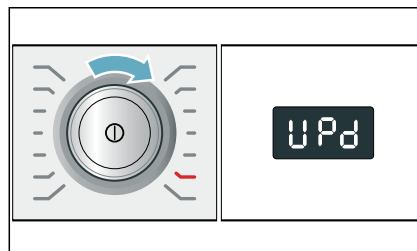
You can update the Home Connect software on your appliance. As soon as a new software update is available, a message appears in the display: **UPd**

Install the update directly via the **message in the display** or **manually** as follows:

Ensure that you are in the Home Connect menu.

→ *Calling up the Home Connect menu; Page 31*

1. Set the program to position 6.



**UPd** (update) appears in the display. Start/Pause flashes if a software update is available.

2. Press **Start/Pause**.

**YES** appears in the display.

3. Press **Start/Pause**.

**Note:** The software update may take several minutes. Do not switch the appliance off while updates are being installed.

## Information on data protection

When your appliance is connected to a WLAN network that is connected to the Internet for the first time, your appliance transmits the following categories of data to the Home Connect® server (initial registration):

- Unique appliance identification (consisting of appliance codes as well as the MAC address of the installed WiFi communication module).
- Security certificate of the WiFi communication module (to ensure a secure data connection).
- The current software and hardware version of your domestic appliance.
- Status of any previous resetting to factory settings.

This initial registration prepares the Home Connect functions for use and is only required when you want to use these Home Connect functions for the first time.

**Note:** Home Connect functions can be used only in conjunction with the Home Connect app. Information on data protection can be accessed in the Home Connect app.

## Declaration of Conformity

BSH Home Appliances Group hereby declares that the appliance which features Home Connect® functionality is in accordance with the essential requirements and other relevant provisions of the following Directives.

## Wi-Fi® Module FCC/IC Statements

**Model: COM1**

**FCC ID: 2AHES-COMGEN1**

**IC: 21152-COMGEN1**

The Home Connect module is a communication device designed to provide communication between appliances and smart devices.

This module is integrated at the factory, under direct control of B/S/H Home Appliances Corporation, and is not user serviceable or upgradable. At least 20cm separation distance should be maintained from device to user.

### FCC COMPLIANCE STATEMENT

---

#### ⚠ CAUTION

Changes or modifications not expressly approved could void your authority to use this equipment.

---

This device complies with Part 15 of the FCC Rules. Operation to the following two conditions:

- This device may not cause harmful interference and
- this device must accept any interference received, including interference that may cause undesired operation.

### INDUSTRY CANADA STATEMENT

This device complies with Industry Canada licence-exempt RSS standard(s). Operation is subject to the following two conditions:

- This device may not cause interference and
- this device must accept any interference, including interference that may cause undesired operation of the device.

WiFi is a registered trademark of Wi-Fi Alliance.

---

# Laundry

## Preparing the laundry

**NOTICE:** Damage to the appliance/fabrics.

Foreign objects (e.g. coins, paper-clips, needles, nails) may damage the laundry or components in the dryer.

Therefore, note the following tips when preparing your laundry:

- Empty all pockets to ensure no loose debris (coins, keys, other hard objects and cigarette lighters) are placed in the dryer drum.
- Close any fasteners (such as zippers, hooks and eyelets) that could cause laundry to catch or become entangled. Button up covers. Tie cloth belts, apron strings, etc. together or use a laundry bag.
- Remove any foreign objects or non-washable parts.
- The drum must be empty prior to loading textiles.

## Sorting the laundry

Check the care labels on each laundry item prior to drying. They provide valuable information as well as limitations about laundry process (temperature etc.) to help you choose an appropriate cycle.

Do not dry the following textiles in the dryer:



- air-tight textiles (e.g. rubberized),
- delicate fabrics (silk, synthetic curtains).

## Drying tips

- To ensure a uniform drying result, sort the laundry according to fabric type and drying program.
- Always dry very small items (such as socks and handkerchiefs) and underwired bras together with large items of laundry or in a laundry bag.
- Do not over-dry easy-care laundry - risk of wrinkling! Allow laundry to finish drying in the air.
- Do not iron laundry immediately after drying. Place the laundry in a pile for a short while. Residual moisture will then be distributed uniformly.
- Knitted fabrics (e.g. T-shirts, jerseys) often shrink when tumble-dried for the first time. Do not use program with selected **Extra Dry** dryness level.
- Only dry wool fabrics with the use of drying rack accessory. To refresh or fluff up wool articles use the **Hand Wash/Wool** program and remove load from dryer and layout on flat surface to finish drying.
- For pre-dried, multi-layered fabrics or small, individual items of laundry, use the **Time** program.  
Also suitable for adding additional drying time if necessary.  
→ *Program selection; Page 28*  
→ *Program selection table; Page 36*
- Some detergents and textile care products, starch or softeners may contain chemicals that may become deposited on the moisture sensors negatively affecting their function and the drying results.

- When washing laundry to be tumble-dried, use the correct amount of detergent and textile care products as specified in the manufacturer's instructions.
- Clean the moisture sensor regularly. → *Cleaning the moisture sensors; Page 40*

## Program selection table

Programs	Max. load up to:	Type of laundry
<b>Cotton</b>	full load	Normal cotton and linen type load (bed linen, cotton clothes, terry bathrobes etc.)
<b>Mix</b>	1/3 load	Mix of cotton and synthetic textiles that do not require sensitive temperatures and treatments.
<b>Anti Shrink</b>	1/3 load	Cotton or linen fabrics and easy-care textiles which may be slightly damp and should be hung out to completely dry. Creases in textiles are reduced.
<b>Sanitize</b>	1/2 load	Cotton fabrics for drying at high temperatures.
<b>Hand Wash/Wool</b>	1/3 load	Wool fabrics suitable for washing or delicate hand washed items. Use to freshen or fluff up wool articles. Remove items after program end and spread out on flat surface to finish drying. Use of Drying rack is recommended → <i>Drying rack; Page 14</i>
<b>Bulky/Large Items</b>	full load	Garments with down feather fillings, pillows and blankets but not quilts only dry one article at a time.
<b>Quick Dry Auto</b>	1/4 load	Laundry made of synthetic fibers, cotton or blended fabrics (for example) that needs to be dried quickly.
 <b>Air Fluff</b>	1/3 load	All types of fabrics. For freshening up or airing out of garments that have been worn for a short period of time.
 <b>Time Dry</b>	1/3 load	Multi-layered fabrics. Sensitive fabrics made of synthetic or acrylic fibers. Also for adding additional drying time if necessary.
<b>Quick 40™</b>	1/3 load	Multi-layered fabrics. Sensitive fabrics made of synthetic or acrylic fibers. Also for adding additional drying time if necessary.
<b>Outdoor/Sport</b>	1/4 load	Weatherproof and functional outdoor clothing with a membrane coating and water-repellent fabrics.
<b>Delicates</b>	1/4 load	Lingerie made of synthetic fibers, cotton or blended fabric.
<b>Jeans</b>	1/2 load	Fabrics made from jeans/denim.
<b>Permanent Press</b>	1/2 load	Trousers, dresses, skirts, shirts, blouses, leggings, sports clothing with synthetic-rich fibers, bed linen and table linen, track suits, parkas, blankets, lingerie.

**Tip:** For best results it is recommended to load the amount of textiles into the drum according to the fabric type and amount shown in the above table.



# Optional program settings

## Low Heat

Reduced temperature for delicate fabrics, e.g. polyacrylic, polyamide or elastane, with longer drying time.

Observe the care information or symbols on the textile's label.

## Time Dry

Available only for Time programs:  **Air Fluff** and  **Time Dry**,

→ *Program selection table; Page 36*

Can be selected from minimum 20 minutes to maximum 3:30 hours, in 10-minute steps.

## Remote Start

Briefly pressing the **Remote Start** button activates or deactivates the Remote start function. Activating the Remote start function enables the appliance to be started remotely via the Home Connect® app.

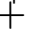

### NOTICES

- Remote start can only be activated if the appliance door is closed and the appliance is connected to your home network.
- Remote start will be deactivated in the following circumstances:
  - The door is opened.
  - There is a power failure.
  - The **Remote Start** button was briefly pressed again deactivating it.
  - The center of the Program Selector was pressed switching off the appliance.
  - Once the program has ended.
  - Any button was pressed or the program selector was turned on the control panel.

Pressing and holding the **Remote Start** button for at least 3 seconds enters Home Connect settings.

## Finish in

The program end (Finish in) time can be set in one hour increments to a maximum of 24 h (hours).

After selecting the desired drying program (at the dial) but before pressing the Start/Pause button, press the **Finish in**  or  button until the desired time is displayed, e.g. 8 h. Press the Start/Pause button to start the dryer.

**NOTICE:** The cycle duration is included in the set Finish in time.

Here is an example of 1hr:30min cycle time and an 8 h Finish in time. 8 h is displayed (until Energy-saving mode activates) and counts down (approximately 6hr:30min) until the drying cycle begins (at 1hr:30min) then the cycle duration 1:30 is displayed and drying begins. Total time approximately 8 hours.

## Dryness Level

Select the dryness level that you require for the laundry you need to dry.

### Extra Dry:

Heavy, multi-layered or thick laundry that does not dry easily.

### Dry:

Normal weight textiles.

### Damp:

Normal weight textiles that need to be slightly damp. Suitable for ironing or hanging up.

## Level Adjust

This option adjusts the drying time in small steps for certain programs.

Default setting = OFF (no LED Symbol shown)

Selectable values: OFF, +1, +2, +3

The **Level Adjust** is retained until changed.

**NOTICE:** The higher the number value the increased time of drying.

## End Signal

Use the End Signal button to activate or deactivate the audible signal that sounds to indicate that the program has ended. If the setting has been selected, the button's indicator light will be lit and the signal tone is activated.

## Wrinkle Block

If the **Wrinkle Block** option is activated it prevents the laundry from creasing or wrinkling. The drum rotates at specific intervals after the drying process allowing the load to remain loose and fluffy until removed.


If the **Wrinkle Block** button is activated, this function is set to 60 or 120 minutes.

The laundry should be removed before this time has elapsed.

# Appliance settings

## Child lock 3 sec.

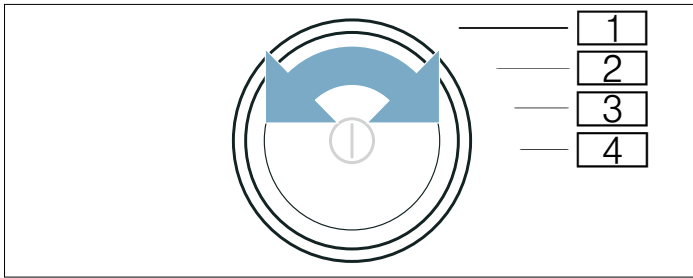
You can secure the appliance against inadvertent changing of the set functions. To do this, activate the Child lock after cycle start.

To **Activate/Deactivate**, press **Finish in** — and + for approximately 3 seconds. In the display field, you will see the  symbol light indicating the Child lock is active.

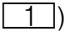
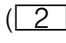
**NOTICE:** The Child lock will remain activated after the end of the cycle. Even switching the appliance off and on will not deactivate the Child lock. You must deactivate Child lock and, if necessary, activate it again.

## Activating setting mode

In order to change the default appliance settings described below, you will first need to enter or activate setting mode.





To enter or activate the setting mode:

1. Switch on the appliance. The indicator lamp of the program on position 1 () lights up.
2. Press and hold **Dryness Level** button and, at the same time, turn the program selector to position 2 ()
3. Release **Dryness Level** button.

The setting mode is now activated.


## Changing the audible signal volume

You can adjust the volume of audible notification signals (that indicate that a program has ended, for example) and audible button signals by turning the program selector to the following positions:

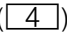
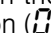

- 2 (): Audible notification signal volume  
selectable values: 1 = quiet, 2 = medium, 3 = loud, 4 = very loud
- 3 (): Audible button signal volume  
selectable values: 0 = off, 1 = quiet, 2 = medium, 3 = loud, 4 = very loud

1. Turn the program selector to the required position.
2. Use the **Finish in** + or — button to set the volume you require.

## Switching the automatic switch-off function on/off

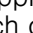
If the appliance is not used for an extended period, it may automatically switch itself off until a program starts or when a program has ended in order to save energy. It can be switched back on again at any time by pressing the power button .

You can switch the appliance's automatic switch-off function on or off as follows:

1. Turn the program selector to position 4 ()
2. Use the **Finish in** + or — button to switch the appliance's automatic switch-off function on () or off ()

**NOTICE:** The automatic switch-off function cannot be activated if Wi-Fi is activated.

## Exiting setting mode

Once you have applied all the settings, press the power button  to switch off the appliance.

The settings you have selected will be saved and will take effect the next time the appliance is switched on.

# USER-MAINTENANCE INSTRUCTIONS

## USER-MAINTENANCE INSTRUCTIONS

Your appliance is designed to give you years of service. Observe the following instructions to maintain your appliance and keep it in top operating condition.

---

### ▲ WARNING

#### RISK OF EXPLOSION

Never use solvents or highly flammable liquids for cleaning.

---

### ▲ CAUTION

Regular Maintenance, especially cleaning the lint filters is important!

Improper cleaning may damage the dryer or cause injury.

Do not spray with a hose or pressure washer.

Do not use scouring agents or all-purpose cleaners.

Do not use steam cleaners.

Do not use bleach-based wipes.

---

## Cleaning the Dryer's exterior

Clean the Dryer's exterior surfaces by wiping with a soft cloth and soapy water only.

Wipe the drum, door seal and inside of the door with a damp cloth only.

**NOTICE:** Do not clean with a water jet.

Remove detergent and cleaning agent residue immediately.

During drying, water may occasionally accumulate between the window and the seal. This does not affect the proper operation of your dryer.

## Cleaning the lint filter area

---

### ▲ WARNING

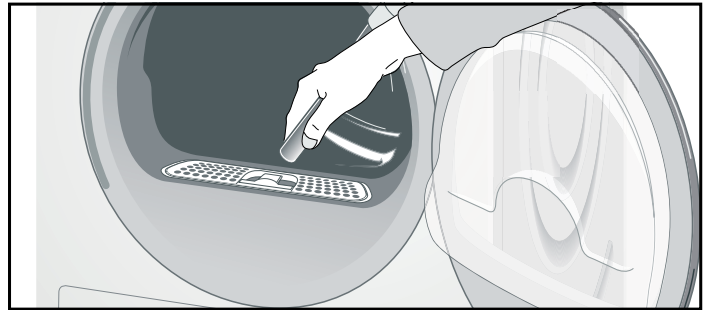
#### FIRE HAZARD

Follow these instructions when cleaning the lint filter area.

- DO NOT extend any cleaning device or object more than six inches (6") beyond the lint filter opening.
  - Only use a soft instrument (rubber, cloth or soft bristles) for cleaning inside the lint filter area.
  - With both lint filters removed, wipe or vacuum around the lint filter opening and no more than six inches below the opening.
- 

Over time, lint from the drying process collects in the lint filter area.


This lint can be easily removed using a vacuum cleaner.



## Cleaning the lint filters

Dirty filters prolong the drying time and increases energy consumption.

The filters should be cleaned before or after each drying process.

If  indicator lights up during a drying program, clean the filters immediately.

**Tip:** The program is interrupted automatically.

### To clean the lint filters:

1. Press the center of the Program Selector to switch off the appliance.

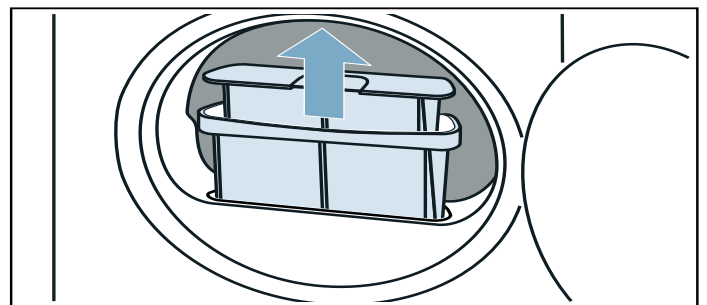
---

### ▲ CAUTION

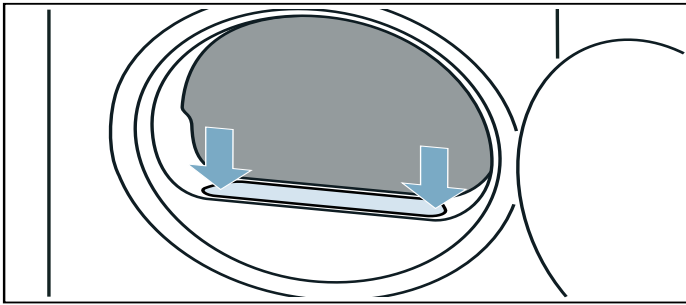
The inside of the door heats up during the drying process. The drum, the door and the laundry may be hot.

---

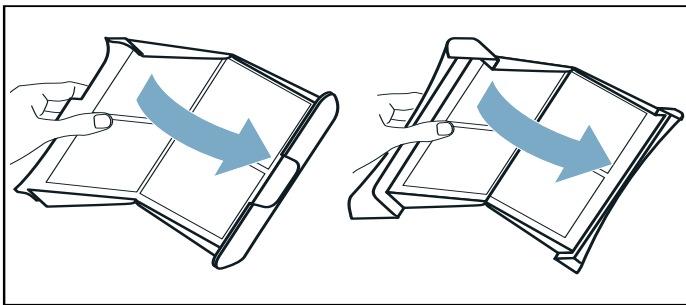
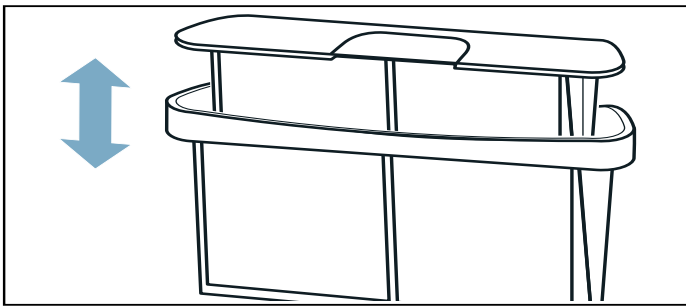
2. Open the door and clean all lint from around top of the lint filter and door perimeter. Pull out the two-part lint filter as shown.



3. Clean lint from the recess shown below. Ensure no lint falls into the opening below.

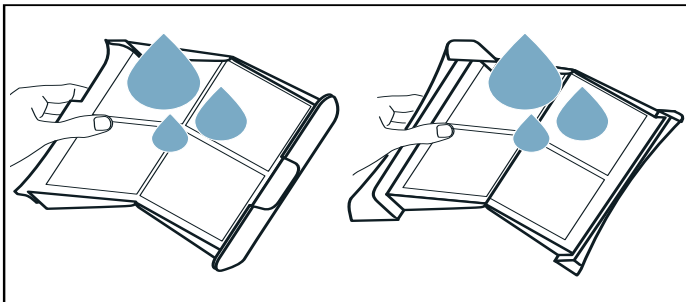


4. Separate the two-part lint filter and open both parts as shown.



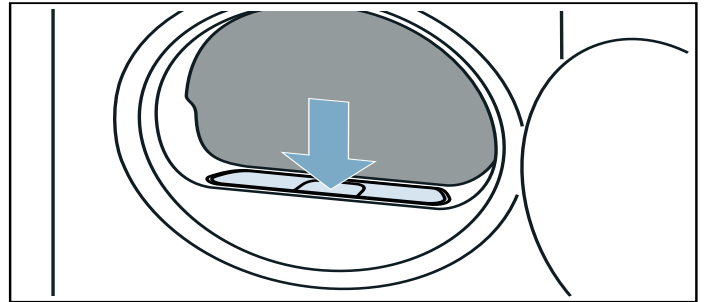
5. Gently remove all lint and debris from both filters by rubbing with your fingers only.

**NOTICE:** Severely dirty or clogged lint filters should be rinsed under warm water.



**NOTICE:** Both filters should be completely dry before putting them back in place in the dryer.

6. Close filters until they snap shut and reinsert them together, as they were when removed, and place them back in the opening as shown.



**▲ CAUTION**

Do not operate the dryer without all lint filters in place, or incomplete, or defective! Damage to the dryer will result.

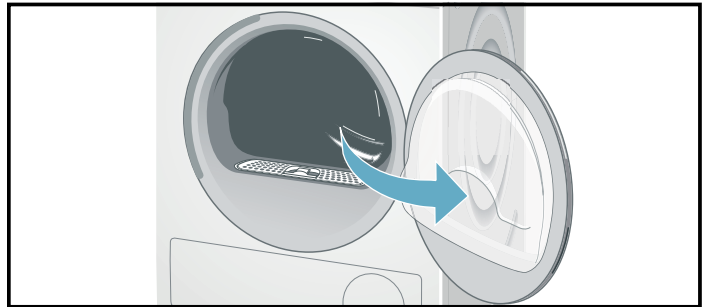
**Cleaning the moisture sensors**

The dryer is equipped with a stainless-steel moisture sensor. The moisture sensor measures how damp the laundry is.

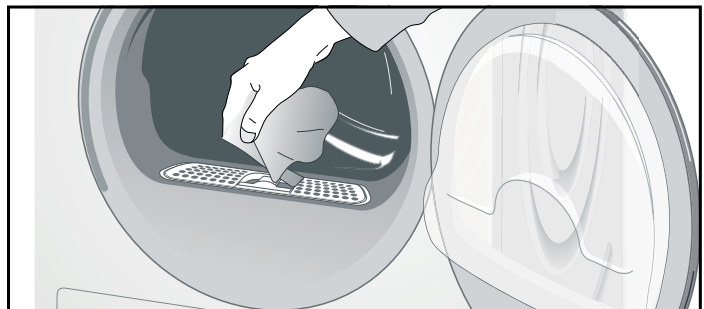
After long periods of use the moisture sensor may become covered by a fine layer of limescale or residue of detergents and textile care products. Such residue must be removed regularly as the sensor function will be impaired and the drying results less than desired.

**To clean the moisture sensors:**

1. Open the door.




2. The deposit on the sensors can easily be removed by wiping the sensors (the two bars next to the lint filter) with a cloth and white vinegar.




**NOTICE:** Use white vinegar only!  
Clean the moisture sensors once a month.



## Maintenance of drain hose

If  indicator lights up check the following items:

1. Remove the tank and drain it of all water.
2. Check the drain hose for kinks, restrictions or blockage.

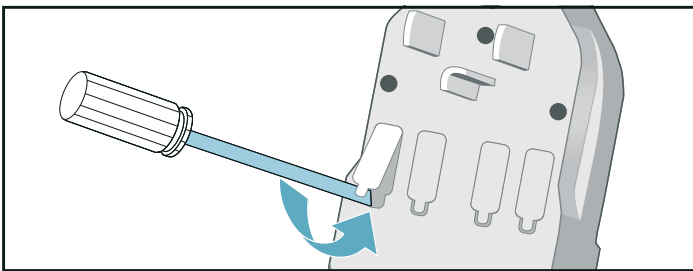
**NOTICE:** If the  indicator still lights up after the above steps are taken, contact Customer Service.

## Replacing fuses in the Power Adapter - step-by-step

Fuses are a required safety device intended to last for the life of the product. In the unlikely event one fails follow the below steps to replace it.

1. Unplug the Washer and Dryer cords from the Power Adapter.

Unplug the Power Adapter from the wall outlet.



2. Remove fuse holder using a pointed tool as shown (e.g. pick or small screwdriver).
3. Replace suspected bad fuse with a known good one.

**NOTICE:** USE ONLY THE REPLACEMENT FUSE, PART NUMBER 10013781.

4. Reinstall the fuse and fuse holder in the Power Adapter ensuring it snaps into place.

---

# Troubleshooting

## Introduction

**NOTICE:** Before doing maintenance work or trying to fix a problem, press the center of the program selector to switch off the appliance.

If the power supply is interrupted during operation, the program will not continue when power is restored. When power is restored, confirm program and selected options are as desired and then press the Start/Pause button.

---

### **▲ WARNING**

---

RISK OF INJURY TO SKIN  
The door, the drum and the laundry may be hot.

---

---

### **▲ WARNING**

---

RISK OF ELECTRIC SHOCK! EXPLOSION HAZARD  
Repairs or replacement of parts should be carried out by authorized service providers only.

---

Before calling Customer Service, check whether you can rectify the problem yourself by means of the following table.

If a problem cannot be rectified or a repair is required:



1. Press the center of the Program Selector to switch off the appliance.
2. Disconnect the dryer from the power outlet.
3. Call Customer Service.  
→ *Customer service; Page 4*

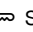

## General Troubleshooting

Often when you encounter a problem it will be something minor. Before you call Customer Service, consider the suggestions and instructions below:

**NOTICE:** The troubleshooting items listed below can help resolve minor issues with your dryer quickly and without the necessity of a service call.

## Determining the Problem

Problem	Possible cause(s)	Solution(s)
Dryer does not start. <b>Start/Pause</b> indicator light does not flash.	Power cord end not inserted at all or not inserted correctly.	Insert power cord end correctly.
	A fuse is blown or breaker is tripped.	Replace fuse or reset breaker. For replacing the fuses in the supplied Power Adapter → <i>Replacing fuses in the Power Adapter - step-by-step; Page 41</i>
	Door not closed properly.	Check if laundry is caught in the door. Close the door until a click is heard.
The display panel and indicator lights switch off, <b>Start/Pause</b> indicator flashes.	Energy-saving mode is activated.	Press any button to activate the display. → <i>Environmentally friendly use of your dryer; Page 9</i>
The display panel and <b>Start/Pause</b> indicator switch off.	Automatic switch-off function is active.	Press the center of the Program Selector to switch on the appliance.
Dryer does not start. <b>Start/Pause</b> indicator flashes.	<b>Start/Pause</b> button not pressed.	Press the <b>Start/Pause</b> button to start the cycle.
 indicator lights up.	Lint filter dirty.	Clean lint filters. → <i>Cleaning the lint filters; Page 39</i> Press the <b>Start/Pause</b> button to reset the displayed indication and then press <b>Start/Pause</b> button again to reset the appliance if necessary.
 indicator lights up. Water has not drained completely.	Drain hose is blocked.	Check drain hose. → <i>Maintenance of drain hose; Page 41</i> Check drain hose connection conditions.
Water is leaking out.	Dryer is not leveled.	Level the dryer. → <i>Leveling the dryer; Page 19</i>
	Drain hose is leaking.	Check entire length of drain hose for leaks; replace if necessary. Check that hose is clamped on hose barb at back of the dryer securely.
Program terminates shortly after starting.	Laundry is not loaded.	Load the laundry. → <i>Loading the laundry; Page 29</i>
	Load too small for selected program.	Use time program. → <i>Program selection; Page 28</i> → <i>Program selection table; Page 36</i>
	Loaded laundry is too dry.	Check the loaded laundry. If it is dry, open the door, remove laundry and press the center of the Program Selector to switch off the appliance.
The door opens by itself.	The door not closed properly.	Close the door until a click is heard.
Creasing.	Laundry load exceeded.	Do not exceed the maximum load for selected program. Remove items of laundry immediately after the end of the program, hang them up and pull into shape. Press the center of the Program Selector to switch off the appliance. → <i>Program selection table; Page 36</i> Select Wrinkle Block button to prevent the laundry from creasing or wrinkling. → <i>Wrinkle Block; Page 37</i>
	Unsuitable program selected.	

<b>Problem</b>	<b>Possible cause(s)</b>	<b>Solution(s)</b>
Drying result is not satisfactory (laundry feels too damp).	Warm laundry may feel more damp than it really is.	Remove items of laundry immediately after the end of the program and press the center of the Program Selector to switch off the appliance.
	The selected program does not suit the load.	Use another drying program or, in addition, select the time program. → <i>Program selection; Page 28</i> → <i>Program selection table; Page 36</i>
	Dryness level is not adjusted.	Use <b>Level Adjust</b> to adjust the dryness level. → <i>Level Adjust; Page 37</i>
	Fine layer of limescale or detergent and textile care products residues on the moisture sensors.	Clean the moisture sensors. → <i>Cleaning the moisture sensors; Page 40</i>
	Program termination e.g. main power supply failure, door open or maximum drying time reached.	See the problem(s) mentioned in this table.
Drying time too long.	Initial load is too wet.	Spin laundry at higher speed in the washing machine, before drying. Switch off the dryer, and then turn it on again.
	Lint filter is dirty.	Clean lint filters → <i>Cleaning the lint filters; Page 39</i>
	Insufficient supply of ambient air for cooling.	Ensure that cool ambient room air can freely circulate near the dryer. → <i>Installation for best performance; Page 10</i>
	Air inlet possibly blocked.	Do not obstruct the air inlet on the front of the dryer.
Program does not start Finish in (remaining) time is displayed.	Ambient temperature is lower than 59°F/15°C or higher than 86°F/30°C .	Ensure the ambient room conditions are within this range.
	A delayed starting time has been selected and activated.	Drying cycle will begin at proper time to complete at the selected Finish in time.
Program does not start -  symbol lit up.	Child lock is activated.	Deactivate Child lock. → <i>Child lock 3 sec.; Page 38</i>
One or more indicator lights are flashing.	Installation conditions are not adequate.	Check the installation conditions. → <i>Electrical Connections; Page 18</i>
	Fault in program sequence or malfunction.	Switch off the dryer, allow it to cool down, switch back on and restart the program.
Power failure.		Remove laundry from the dryer immediately and spread out. This allows the heat to dissipate. Be careful as the door, the drum and the laundry may be hot.
 does not appear in the display panel.	Wi-Fi is switched off.	To connect to your home network, switch on Wi-Fi. → <i>Home Connect®; Page 31</i>
	Wi-Fi is switched on but a connection to the home network cannot be established.	Check whether your home network is available or try to connect to your home network again.
Home Connect® is not working.		<ul style="list-style-type: none"> <li>You can find solutions to problems with Home Connect at <a href="http://www.home-connect.com">www.home-connect.com</a>.</li> <li>The use of the Home Connect functionality depends on the availability of the Home Connect Services in your country. Check here, <a href="http://www.home-connect.com">www.home-connect.com</a>, to see if the Home Connect services are available in your area and further information.</li> </ul>

If troubleshooting did not solve your issue contact Customer Service → *Customer service; Page 4*

# STATEMENT OF LIMITED PRODUCT WARRANTY

## Bosch Clothes Dryer

### What this Warranty Covers & Who it Applies to:

The limited warranty provided by BSH Home Appliances ("Bosch") in this Statement of Limited Product Warranty applies only to the Bosch appliance ("Product") sold to you provided that the Product was purchased:

- For your normal, household (non-commercial) use, and has in fact at all times only been used for normal household purposes.
- New at retail (not a display, "as is", or previously returned model), and not for resale, or commercial use.
- Within the United States or Canada, and has at all times remained within the country of original purchase.

The warranties stated herein apply to the original purchaser of the product warranted herein and to each succeeding owner of the product purchased for ordinary home use during the term of the warranty.

Please make sure to return your registration card; while not necessary to effectuate warranty coverage, it is the best way for Bosch to notify you in the unlikely event of a safety notice or product recall.

### Limitation for Third Party Accessories:

Third party accessories, other than those shipped with your Bosch appliance, and any consequential damages resulting therefrom, are not covered by this warranty. This limitation expressly includes the implied warranties of merchantability and fitness for a particular purpose, which are also expressly excluded with respect to third party accessories, other than those shipped with your Bosch appliance. Use of third party accessories, other than those shipped with your Bosch appliance, does not void this warranty on any other part, and all other provisions of this warranty remain in effect.

### How Long the Warranty Lasts:

Bosch warrants that the Product is free from defects in materials and workmanship for a period of three hundred sixty-five days (365) days from the date of the original purchase. The foregoing timeline begins to run upon the date of the original purchase, and shall not be stalled, tolled, extended, or suspended, for any reason whatsoever. This product is also warranted to be free from cosmetic defects in material and workmanship (such as scratches of stainless steel, paint/porcelain blemishes, chips, dents, or other damage to the finish) of the Product, for a period of thirty (30) days from the date of purchase or closing date for new construction. This cosmetic warranty excludes slight color variations due to inherent differences in painted and porcelain parts, as well as differences caused by kitchen lighting, product location, or other similar factors. This cosmetic warranty specifically excludes any display, floor, "As Is", or "B" stock appliances.

### SCOPE OF EXTENDED LIMITED WARRANTY

Bosch will repair or replace, free of charge, any printed circuit boards, drive motor or component part of the drive motor that proves defective under conditions of normal home use during the first seven hundred thirty (730) days from the date of the original purchase, labor charges excluded.

### Repair/Replace as Your Exclusive Remedy:

During this warranty period, Bosch or one of its authorized service providers will repair your Product without charge to you (subject to certain limitations stated herein) if your Product proves to have been manufactured with a defect in materials or workmanship. If reasonable attempts to repair the Product have been made without success, then Bosch will replace your Product (upgraded models may be available to you, in Bosch's sole discretion, for an additional charge). Nothing in this warranty requires damaged or defective parts to be replaced with parts of a different type or design than the original part. All removed parts and components shall become property of Bosch at its sole option. All replaced and/or repaired parts shall assume the identity of the original part for purposes of this warranty and this warranty shall not to be extended with respect to such parts. Bosch's sole liability and responsibility hereunder is to repair manufacturer-defective Product only, using a Bosch authorized service provider during normal business hours. For safety and property damage concerns, Bosch highly recommends that you do not attempt to repair the Product yourself, or use a non-authorized service provider; Bosch will have no responsibility or liability for repairs or work performed by a non-authorized service provider. Authorized service providers are those persons or companies that have been specially trained on Bosch products, and who possess, in Bosch's opinion, a superior reputation for customer service and technical ability (note that they are independent entities and are not agents, partners, affiliates or representatives of Bosch). Notwithstanding the foregoing, Bosch will not incur any liability, or have responsibility, for the Product if it is located in a remote area (more than 100 miles from an authorized service provider) or is in a reasonably inaccessible, hazardous, threatening, or treacherous locale, surroundings, or environment; in any such event, if you request, Bosch would still pay for labor and parts and ship the parts to the nearest authorized service provider, but you would still be fully liable and responsible for any travel time or other special charges by the service company, assuming they agree to make the service call.

### Out of Warranty Product:

Bosch is under no obligation, at law or otherwise, to provide you with any concessions, including repairs, prorates, or Product replacement, once this warranty has expired.

**Warranty Exclusions:**

The warranty coverage described herein excludes all defects or damage that are not the direct fault of Bosch, including without limitation, one or more of the following:

- Use of the Product in anything other than its normal, customary and intended manner (including without limitation, any form of commercial use, use or storage of an indoor product outdoors, use of the Product in conjunction with air or water-going vessels).
- Any party's willful misconduct, negligence, misuse, abuse, accidents, neglect, improper operation, failure to maintain, improper or negligent installation, tampering, failure to follow operating instructions, mishandling, unauthorized service (including self performed "fixing" or exploration of the appliance's internal workings).
- Adjustment, alteration or modification of any kind.
- A failure to comply with any applicable state, local, city, or county electrical, plumbing and/or building codes, regulations, or laws, including failure to install the product in strict conformity with local fire and building codes and regulations.
- Ordinary wear and tear, spills of food, liquid, grease accumulations, or other substances that accumulate on, in, or around the Product.
- Any external, elemental and/or environmental forces and factors, including without limitation, rain, wind, sand, floods, fires, mud slides, freezing temperatures, excessive moisture or extended exposure to humidity, lightning, power surges, structural failures surrounding the appliance, and acts of God.

In no event shall Bosch have any liability or responsibility whatsoever for damage to surrounding property, including cabinetry, floors, ceilings, and other structures or objects around the Product. Also excluded from this warranty are Products on which the serial numbers have been altered, defected, or removed; service visits to teach you how to use the Product, or visits where there is nothing wrong with the Product; correction of installation problems (you are solely responsible for any structure and setting for the Product, including all electrical, plumbing or other connecting facilities, for proper foundation/flooring, and for any alterations including without limitation cabinetry, walls, floors, shelving, etc.); and resetting of breakers or fuses.

TO THE EXTENT ALLOWED BY LAW, THIS WARRANTY SETS OUT YOUR EXCLUSIVE REMEDIES WITH RESPECT TO PRODUCT, WHETHER THE CLAIM ARISES IN CONTRACT OR TORT (INCLUDING STRICT LIABILITY, OR NEGLIGENCE) OR OTHERWISE. THIS WARRANTY IS IN LIEU OF ALL OTHER WARRANTIES WHETHER EXPRESS OR IMPLIED. ANY WARRANTY IMPLIED BY LAW, WHETHER FOR MERCHANTABILITY OR FITNESS FOR A PARTICULAR PURPOSE, OR OTHERWISE, SHALL BE EFFECTIVE ONLY FOR THE PERIOD THAT THIS EXPRESS LIMITED WARRANTY IS EFFECTIVE. IN NO EVENT WILL THE MANUFACTURER BE LIABLE FOR CONSEQUENTIAL, SPECIAL, INCIDENTAL, INDIRECT, "BUSINESS LOSS", AND/OR PUNITIVE DAMAGES, LOSSES, OR EXPENSES, INCLUDING WITHOUT LIMITATION TIME AWAY FROM WORK, HOTELS AND/OR RESTAURANT MEALS, REMODELLING EXPENSES IN EXCESS OF DIRECT DAMAGES WHICH ARE DEFINITELY CAUSED EXCLUSIVELY BY BOSCH, OR OTHERWISE. SOME STATES DO NOT ALLOW THE EXCLUSIONS OR LIMITATIONS OF INCIDENTAL OR CONSEQUENTIAL DAMAGES, AND SOME STATES DO NOT ALLOW LIMITATIONS ON HOW LONG AN IMPLIED WARRANTY LASTS, SO THE ABOVE EXCLUSIONS OR LIMITATIONS MAY NOT APPLY TO YOU. THIS WARRANTY GIVES YOU SPECIFIC LEGAL RIGHTS, AND YOU MAY ALSO HAVE OTHER RIGHTS WHICH VARY FROM STATE TO STATE.

No attempt to alter, modify or amend this warranty shall be effective unless authorized in writing by an officer of BSH.

**How to Obtain Warranty Service:**

To obtain warranty service for your Product, you should contact Bosch Customer Service Department at 1-800-944-2904 to schedule a repair.





9001538672  
0006



1901 Main Street, Suite 600 • Irvine, CA 92614 • 1-800-944-2904  
[www.bosch-home.com](http://www.bosch-home.com) • © 2020 BSH Home Appliances Corporation