

INSTRUCTION MANUAL

KITCHEN SCALE

MANUEL D'UTILISATION

BALANCE DE CUISINE

MANUAL DE USO

BÁSCULA DE COCINA

EN

FR

ES



Important information for the user
Informations importantes pour l'utilisateur
Información importante para el usuario



Recommendations / Avertissements / Advertencias



Description / Description / Descripción



Use / Utilisation / Uso



Cleaning and care / Nettoyage et entretien / Limpieza y mantenimiento



Safety instructions / Consignes de sécurité / Advertencia de seguridad



Information / Information / Información



Advice / Conseil / Sugerencia



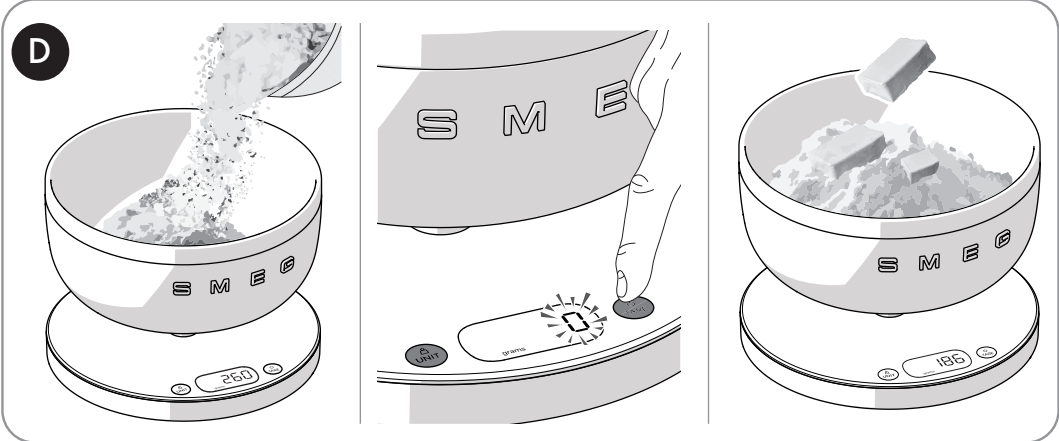
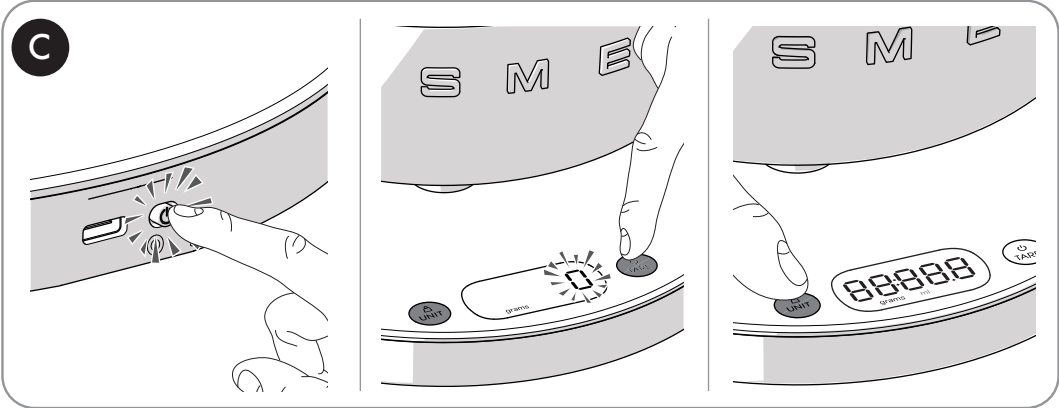
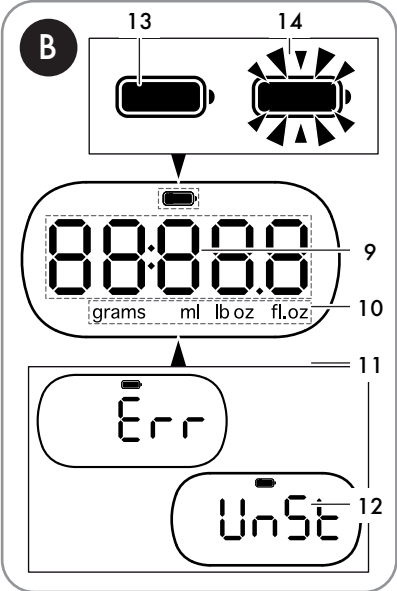
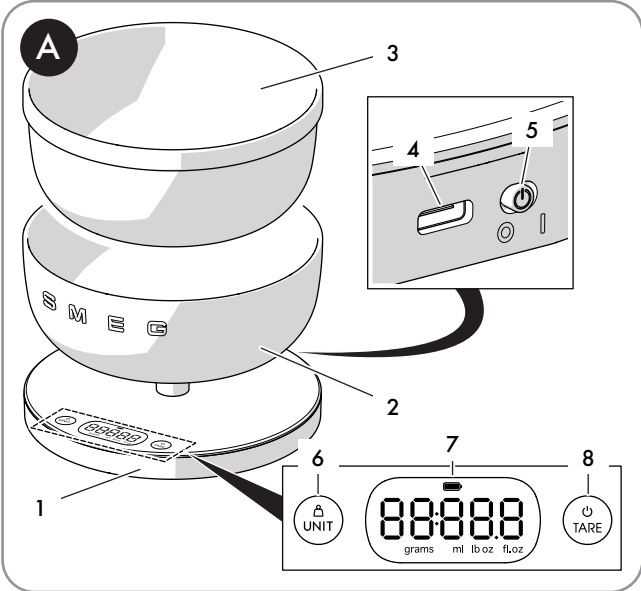
Scan the QR code for quick access to the My Smeg Assistant portal
Scannez le code QR pour un accès rapide au portail My SMEG Assistant
Escanee el código QR para acceder rápidamente al portal My Smeg Assistant

Dear Customer, Thank you for purchasing one of our appliances. Our products are unique because they combine iconic style with innovative technical solutions. They match perfectly with other products in our range and work equally well as a standalone design objects in your kitchen. We hope you enjoy using your new appliance! Best regards.

Cher client, merci beaucoup pour votre achat. Nos produits sont uniques car ils combinent une forte recherche esthétique avec une conception technique innovante. Ils sont coordonnés avec d'autres produits de la gamme et peuvent constituer des éléments d'ameublement et de design. En espérant que vous pourrez apprécier pleinement votre nouvel appareil électroménager, nous vous adressons nos meilleures salutations.

Estimado cliente, le damos las gracias por su compra. Nuestros productos son únicos porque combinan una notable búsqueda estética con un diseño técnico innovador. Se combinan con otros productos de la gama y se pueden utilizar como elementos de decoración y diseño. Le deseamos que pueda apreciar plenamente su nuevo electrodoméstico. Le enviamos nuestros saludos más cordiales.

SMEG S.p.A.



IMPORTANT SAFEGUARDS



NE

WARNING: If the instructions contained in this manual are not followed precisely, a fire or explosion may result causing property damage, personal injury or death.



READ AND SAVE THESE INSTRUCTIONS

Your safety and the safety of others are very important.

We have provided many important safety messages throughout this manual and on the appliance.

Read all the instructions before using the appliance and always obey all safety messages.



RECOGNIZE SAFETY INFORMATION

This is the safety alert symbol. This symbol alerts you to potential hazards that can result in severe personal injury or death.

UNDERSTAND SIGNAL WORDS

A signal word – DANGER, WARNING, or CAUTION – is used with the safety alert symbol. DANGER denotes the most serious hazards. It means you could be killed or seriously injured if you do not immediately follow the instructions.

WARNING means you could be killed or seriously injured if the instructions are not followed. CAUTION indicates a potentially hazardous situation, which, if not avoided, could result in minor to moderate injury.

WARNING



- This appliance is intended for residential use only.
- Use this appliance only for its intended purpose. The manufacturer cannot be held liable for damage caused by improper use of this appliance.
- This appliance complies with current safety regulations. Improper use can result in personal injury and material damage.
- Read all the instructions before installing or using the appliance for the first time.
- Keep these operating instructions in a safe place and pass them on to any future user.



IMPORTANT SAFEGUARDS

The safety messages will inform you of potential hazards, on how to avoid the risk of injury and what can occur if the instructions are not followed.

IMPORTANT: Observe all codes and ordinances in force.

WARNING: For your safety, the instructions contained in this manual must be followed to minimize the risk of fire or explosion and to prevent property damage, personal injury or death.

Do not store or use gasoline or other flammable vapors, liquids or materials near this or any other appliance.



NOTE: This appliance is NOT designed for installation in manufactured (mobile) homes or in recreational vehicles (RVs).

DO NOT install this appliance outdoors.

IMPORTANT SAFEGUARDS



WARNING



To reduce the risk of fire, electrical shock, personal injury, or damage when using the appliance, follow basic safety precautions, including the following:

NE

1 Instructions

This user manual is an integral part of the appliance and must therefore be kept in its entirety and in an accessible place for the whole working life of the appliance.

1.1 Intended use

- Only use the appliance indoors.
- This appliance is intended for household use and similar applications such as:
 - staff kitchen areas in shops, offices and other working environments
 - bed and breakfast facilities / farm accommodation
 - by guests in hotels, motels and other residential accommodations
- Any other use, for example in restaurants, coffee bars and coffee shops is considered improper.
- It must only be used for weighing solid and/or liquid food and cooking ingredients. Do not use the appliance for anything other than its intended use.
- This appliance may be used by people of reduced physical, sensory or mental abilities (including children over the age of 8), only if they are supervised by adults or have been trained on how to use the appliance safely and have understood the dangers associated with its use.

- Children must never play with the appliance.
- Keep the appliance out of the reach of children younger than 8.
- Cleaning and maintenance may be carried out by children who are at least 8 years old only if they are supervised by an adult.

1.2 General safety instructions

- Do not immerse the appliance, power cord or base in water or any other type of liquid.
- Do not use the appliance if it has been dropped or damaged.
- Do not recharge the appliance if the power cord is damaged.
- Never wash the appliance in the dishwasher.
- Do not position the appliance above hot surfaces, cooktop burners, or inside a hot oven. Keep the appliance away from heat sources or steam.
- In the event of a fault, or if the power cable is damaged, the appliance must only be repaired by a qualified technician or an authorized technical support center.
- Read this user manual carefully before using the appliance.
- Any modifications to the appliance will invalidate the warranty.



IMPORTANT SAFEGUARDS

1.3 Caution

- Do not touch or handle the appliance with wet hands.
- Store the appliance in a dry place. Avoid exposing the appliance to harmful weather conditions such as rain, humidity, freezing temperatures etc.
- Place the appliance on a flat, stable surface to ensure correct weighing.
- Place the food to be weighed on the removable container provided. Place the container gently upon the scale to avoid damaging it. Failure to follow the above instructions may void the warranty.
- Do not subject the product to strong impacts, which could damage it.
- Empty the container after weighing the ingredients. Do not use the appliance as a surface to place things on.

1.4 Manufacturer liability

The manufacturer declines any liability for damage to persons or property caused by:

- Use of the appliance other than the one envisaged
- Not having read the user manual
- Tampering with any part of the appliance
- Use of non-original spare parts
- Failure to comply with the safety instructions

1.5 Disposal



This appliance must be disposed of separately from other waste (Directive 2012/19/EU).

- The appliance does not contain substances in quantities sufficient to be considered hazardous to health and the environment, in accordance with current European directives.
- Old electrical appliances must not be disposed of together with household waste! To comply with current legislation, old appliances, on reaching the end of their useful lives, should be taken to a disposal facility where they can be sorted. The relevant local authorities or their waste disposal operators can provide further information.
- Take these packing materials to the appropriate recycling center.



Fire hazard:

- Do not position the appliance above hot surfaces, cooktop burners, or inside a hot oven.

IMPORTANT SAFEGUARDS



NE



Danger of suffocation:

- Do not leave the packaging or any part of it unattended.
- Do not let children play with the plastic bags.



Risk of injury:

- Improper use of the appliance can cause personal injury.



Danger of electrocution:

- Use only approved USB chargers.
- Do not use an adapter.
- Avoid spilling liquids onto the power plug and base.
- Failure to follow these instructions could cause damage, injury or electrical shock.
- Disconnect the power cord from the electrical system.

SAVE THESE INSTRUCTIONS



Description

2 Description of the product

2.1 Description of the scale (Fig. A)

- 1) Base
- 2) Plastic outer bowl
- 3) Stainless steel inner bowl (removable)
- 4) USB charging port
- 5) ON/OFF switch
- 6) Unit of measure selector
- 7) LED display
- 8) On-Off/Tare button

2.2 Description of the display (Fig. B)

- 9) Indicates the state of charge of the battery.
- 10) Displays the weight according to the unit of measurement selected.
- 11) Displays the unit of measurement used.

Overload indication

- 12) "Err" appears on the display during weighing to indicate that the maximum capacity of the scale has been exceeded.

Low battery indication

- 13) The battery icon on the display comes on steadily during weighing when the battery charge is less than 30%.
- 14) It starts to flash when the battery charge is less than 10%. Charge the battery using the USB port on the back of the scale.

Charging the battery

The battery can be charged by connecting the USB cable to a USB charger or a USB wall socket.

- Insert the charging cable into the USB-C port on the rear.
- Insert the other end into an approved USB charger.

The internal battery icon flashes during charging.

When fully charged, the icon remains on steadily.

The battery also recharges when the scale is "OFF". The display will remain off, without any indication being shown.



We recommend using a standard USB charger - 5V/2A.

Description



Display view

NE

Display view

Grams



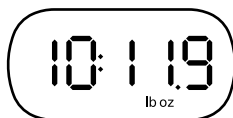
Min/max capacity: 0 - 5000 g
Minimum value displayed: 1 g

Milliliters



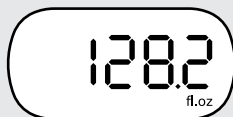
Min/max capacity: 0 - 5000 ml
Minimum value displayed: 1 ml

lb oz



Min/max capacity: 0 - 16 oz
Minimum value displayed: 1 lb / 0.1 oz

Fl. oz



Min/max capacity: 0 - 185 fl. oz
Minimum value displayed: 0.1 fl. oz



The factory setting for the unit of measurement is grams.



Use

3 Use

3.1 Before first use

- Do not subject the scale to shocks: handle with care.
- In order to work correctly, the scale should be placed on a flat, stable surface.
- Clean the scale with a damp cloth, avoiding using solvents and abrasives. Do not immerse in water.



Parts that may come into contact with food are made of materials that comply with the provisions of the laws in force.

3.2 Operation (Fig. C)

- 1) Switch the scale on using the ON/OFF switch on the rear.
- 2) Briefly press any button to switch the scale on.
- 3) The display and the LEDs of the two buttons light up. When the scale is ready, "0" appears on the display.
- 4) Press the "UNIT" button to select the required unit of measure (see section "2.2 Description of the display (Fig. B)").

3.3 Functions (Fig. D)

General weighing

- 1) Place the ingredient to be weighed into the bowl.
- 2) Wait until the value on the display stabilizes.
- 3) The weight displayed increases/decreases as you add/remove the ingredient from the bowl.
- 4) Press the "TARE" button for a few seconds if you wish to switch off the scale.

Tare function

- 1) Press the "TARE" button (briefly) at any time to zero the display.
- 2) Add the ingredients to be weighed.
- 3) Press the "TARE" button again to zero the scale each time you wish to add an ingredient.
- 4) When you remove the ingredients, including the bowl, a negative value will appear on the display. Press "TARE" to reset the scale again.



The scale will turn off automatically after 3 minutes of inactivity.

The scale will turn off automatically after 1 minute of inactivity, when it is set to "0"



4 Cleaning and maintenance

4.1 Cleaning the surfaces

To keep the surfaces in good condition, clean them regularly after each use.

Wipe the surfaces with a damp cloth and then dry thoroughly with a soft cloth or a microfiber cloth.

The removable stainless steel bowl can be washed in a dishwasher.

Improper use: Risk of damage to surfaces

- Do not use steam jets to clean the appliance.
- Do not use cleaning products containing chlorine, ammonia or bleach.
- Do not use abrasive or corrosive detergents (e.g. powder products, stain removers and metallic scourers).
- Do not use rough or abrasive materials or sharp metal scrapers.

What to do if...

Problem	Cause	Solution
The display does not turn on	The product is discharged	Connect the charging cable to a charger and wait for the device to charge fully
	The product is faulty	Contact a Service Center
	The power switch is in the OFF position	Switch the device on
The product does not charge	The charging cable is not plugged in correctly	Remove the cable and insert it into the USB-C port
	The charging cable is faulty	Contact a Service Center
	The battery charger is faulty	Only use certified 5W 2A battery chargers
The tare cannot be set	The product is not on a flat surface	Always use the scale on a flat, level surface
	The sensors are not stable	Make sure that the scale is stationary and level when setting the tare
It is not possible to read the measurement on the display	Faulty back lighting	Contact a Service Center
The scale is not stable	The rubber feet are incorrectly positioned	Make sure that the rubber feet have been mounted correctly

What to do if...

"Err" appears on the display when the device is switched on

The initial tare weight has not been set

Press the "TARE" button again

The scale is not level

Make sure that the scale is on a level surface



If the problem persists, contact your local Service Center.

The manufacturer reserves the right to make any changes deemed necessary for the improvement of its products without prior notice. The illustrations and descriptions contained in this manual are therefore not binding and are merely indicative.

Le fabricant se réserve la faculté d'apporter, sans préavis, toutes les modifications qu'il jugera utiles pour l'amélioration de ses produits. Les illustrations et les descriptions figurant dans ce manuel ne sont pas contraignantes et n'ont qu'une valeur indicative.

El fabricante se reserva el derecho a aportar sin aviso previo todas las modificaciones que considere útiles para la mejora de sus propios productos. Las ilustraciones y las descripciones contenidas en este manual no son vinculantes y tienen solo valor indicativo.