

AI Exercise Bike S1 Owner's Manual

K3040200497

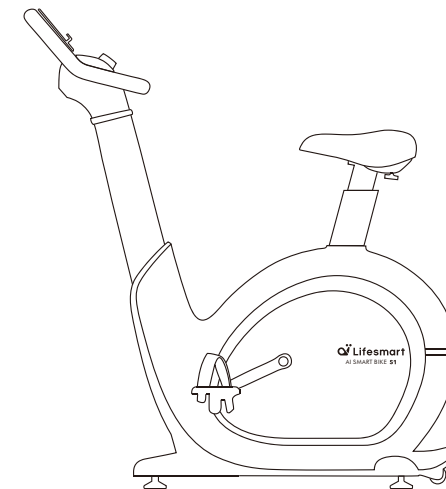
V1.0



LIFE SMART® is a registered trademark of
Supply Chain Sources LLC., All Rights Reserved.

AI Exercise Bike S1

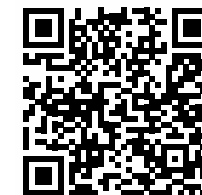
Owner's Manual



Questions, problems, missing parts? Contact technical support department at **657-341-0362, 9:00 a.m. - 5 p.m., PST, Monday - Friday** or contact us via email at **support@scsources.com**.

Please have your model and serial number ready

Scan QR Code to Visit Registration Page



IMPORTANT SAFETY & OPERATION INSTRUCTIONS:

- >>Please turn on the power supply before use.<<
- >>Please read the instruction and check the bike before use.If there is any problem with the part,please replace it.<<
- >>Please confirm whether the connection fixing parts of the bike are locked and placed stably.<<
- >>Ensure that there is safe sapce in the left,right,front and back sides before use.<<
- >>Please stop using it immediately when you feel unwell.<<
- >>This equipment is for home use.<<
- >>This equipment is not for medical use.<<
- >>Do not let children use the bike.<<
- >>This equipment is for indoor use only, don't put in mositure enviroment.<<
- >>The max user weight of this equipment is 135kg.<<

GET START

How to assemble	04-15
How to operate	16-19
How to use Snailcle App	20-24
How to move	25
How to adjust	26-29
Exploded view & Part list	30-33
Common product questions	34
Troubleshooting	35
Maintenance	36
Other declarations	37
One-Year Limited Warranty	38-39

ASSEMBLY

⚠ WARNING

There are several areas during the assembly process that special attention must be paid. It is very important to follow the assembly instructions correctly and to make sure all parts are firmly tightened. If the assembly instructions are not followed correctly, the Snailcle Bike could have parts that are not tightened and will seem loose and may cause irritating noises. To prevent damage to the Snailcle Bike, the assembly instructions must be reviewed and corrective actions should be taken.

Before proceeding, find your Snailcle Bike's serial number located on the rear base frame of the cycle and enter it in the space provided below.

ENTER YOUR SERIAL NUMBER IN THE BOX BELOW:

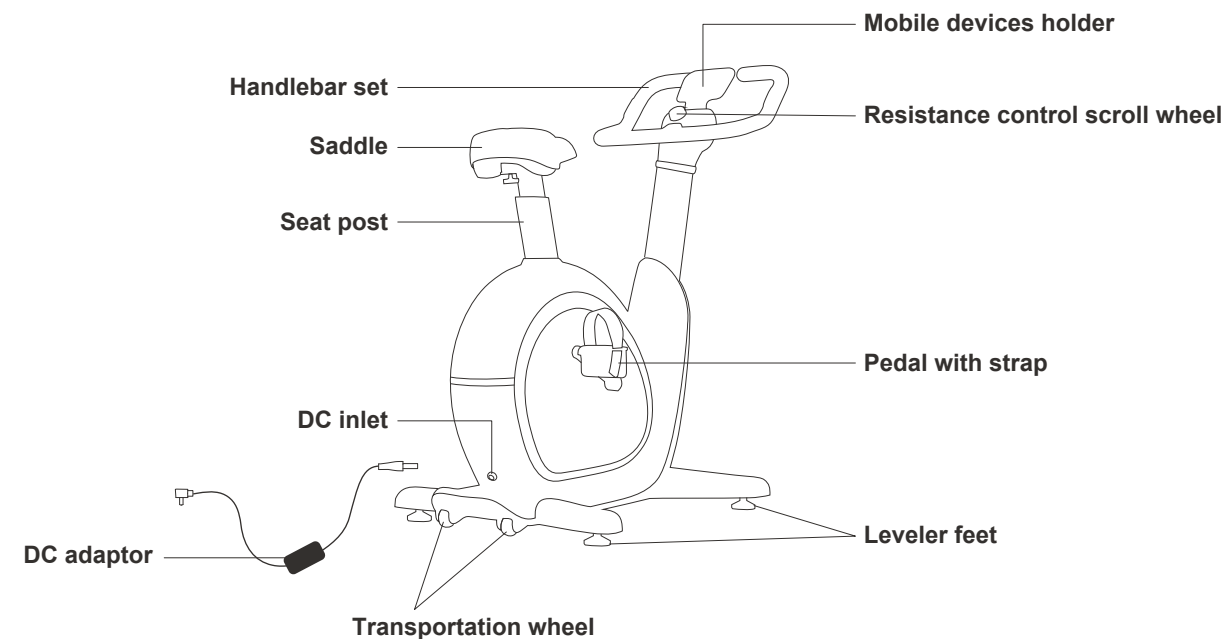
SERIAL NUMBER:

--	--	--	--	--	--	--	--	--	--	--	--	--	--	--	--	--	--	--	--

» Refer to the SERIAL NUMBER and MODEL NAME when calling for service.



MAIN PARTS OF YOUR SNAILCLE BIKE





MAIN PARTS INCLUDED:

- ☐ Main Frame assembly
- ☐ Front & rear stabilizer
- ☐ Left & right pedal
- ☐ Handlebar set
- ☐ DC adaptor

PARTS PACKING INCLUDED:

- ☐ 1 Hardware pack
- ☐ 1 Owner's Manual

PRE ASSEMBLY

UNPACKING

Due to the weight of the Snailcle bike, **it is recommended that two adults perform the assembly.** Set the Snailcle bike in a clear area and remove all packing materials. Do not dispose of the packing materials until assembly is completed.

NOTE: During each assembly step, ensure that ALL nuts and bolts are in place and partially threaded in before completely tightening any ONE bolt.

NOTE: A light application of grease may aid in the installation of hardware. Any grease, such as lithium bike grease is recommended.

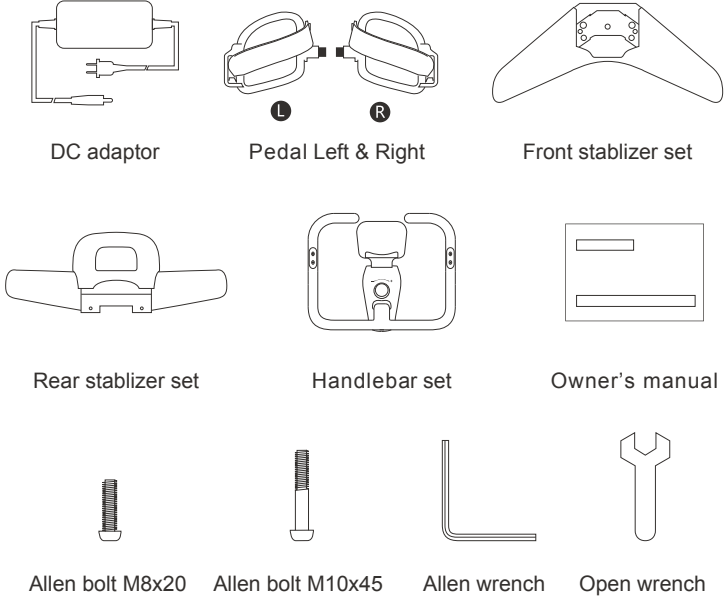
NEED HELP?

If you have questions or if there is any missing part, contact your local dealer.

ASSEMBLY INSTRUCTIONS

ASSEMBLY PARTS LIST AND TOOLS REQUIRED

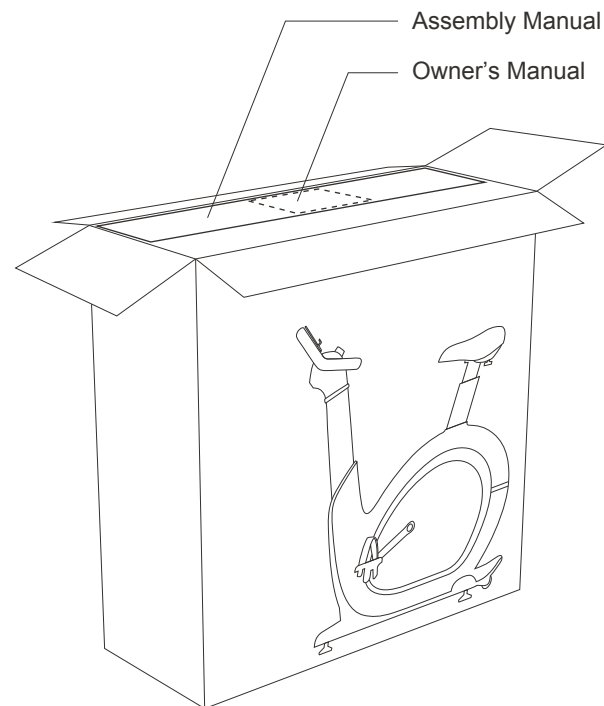
ITEM	DESCRIPTION	QTY
1	DC adaptor	1
2	Pedal (L) & (R)	1
3	Front stablizer set	1
4	Rear stablizer set	1
5	Handlebar set	1
6	Owner's manual	1
7	Allen bolt M8x20	1
8	Allen bolt M10x45	6
9	Allen wrench	1
10	Open wrench	1



Parts Identifier



ASSEMBLY *STEP 1*

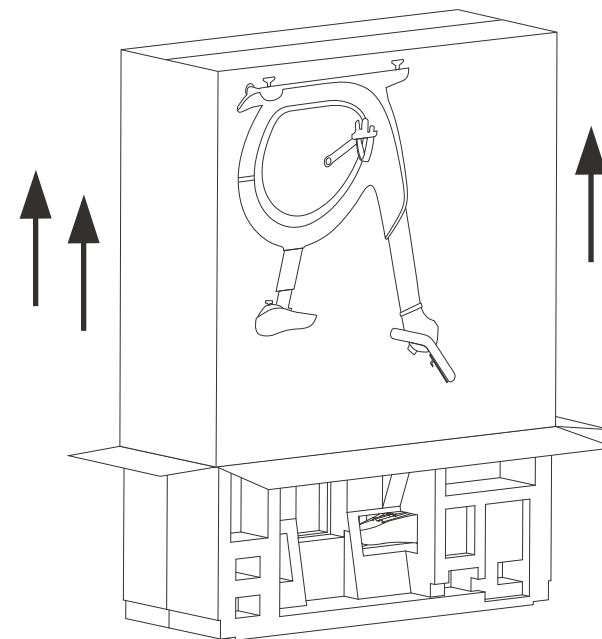


- A Open top of Snailcle bike carton box. Take out Assembly Manual and Owner's Manual.

CAUTION:

- Read Owner's Manual first before assemble the Bike
- Use caution when assembling the Bike. It is recommended that at least two adults unpack and assemble the Bike.

ASSEMBLY *STEP 2*



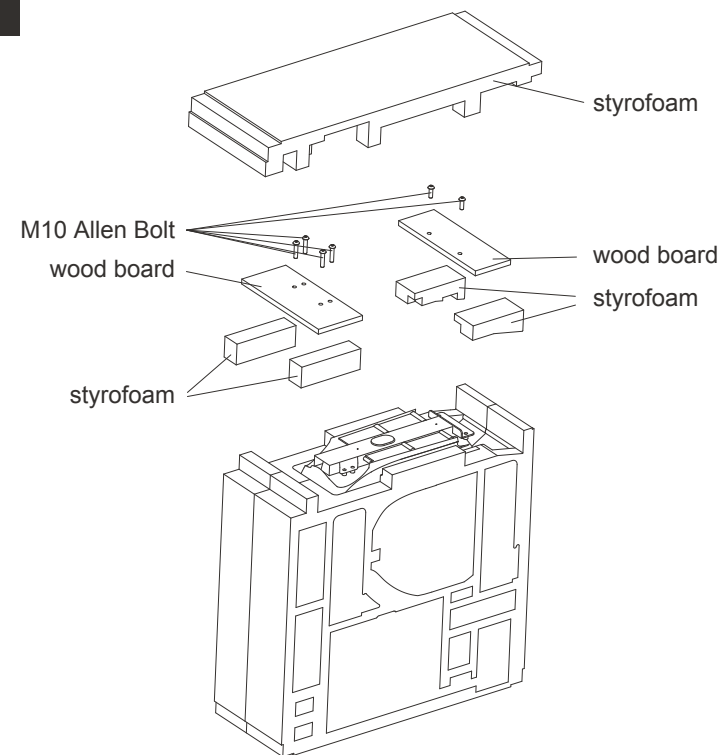
- A Turn the box upside down. Pull the outer carton upward to get access to the inner product.

- B Take out all components needed for the assembly. Do not throw packaging material away until all the assembly is done.

CAUTION:

- Recommend at least 2 adults to lift the box.
- Handle with care. Do not drop the box onto the ground.

ASSEMBLY STEP 3



A Remove the top styrofoam board.

B Remove 6 pcs of Allen Bolt M10 using Allen Wrench (included). Take out wood boards and styrofoam from the packaging and get ready for next step assembly.

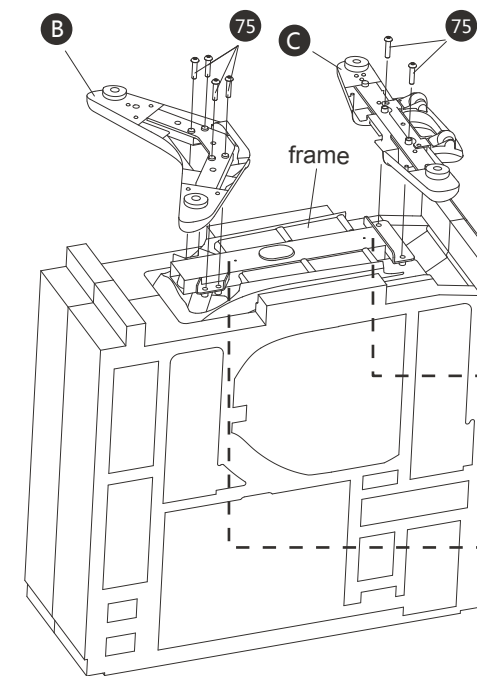
⚠ CAUTION:

The Allen Bolts removed from this step will not be used for subsequent assembly.



No.6 Allen Wrench

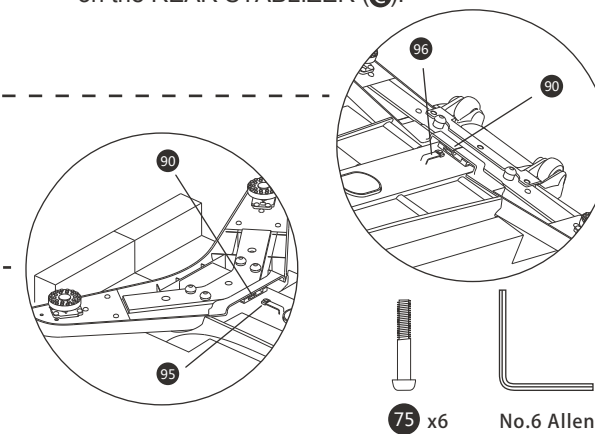
ASSEMBLY STEP 4



A Assemble the FRONT STABILIZER(B) to the frame using 4 ALLEN BOLT(75) and secure firmly by ALLEN WRENCH (included).

B Assemble the REAR STABILIZER(C) to the frame using 2 ALLEN BOLT(75) and secure firmly by ALLEN WRENCH (included).

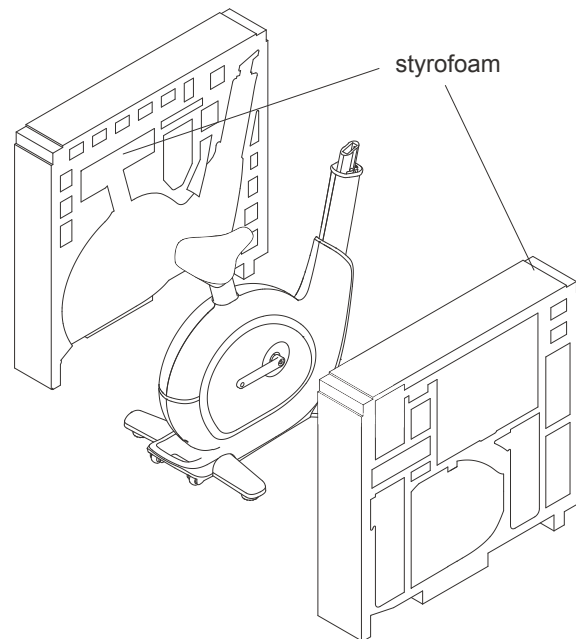
C Connect SENSOR EXT. WIRE(95) to PRESSOR SENSOR ADAPTER PLATE(90) on the FRONT STABILIZER SET(B), and connect SENSOR EXT. WIRE(96) to PRESSOR SENSOR ADAPTER PLATE(90) on the REAR STABILIZER (C).



75 x6

No.6 Allen Wrench

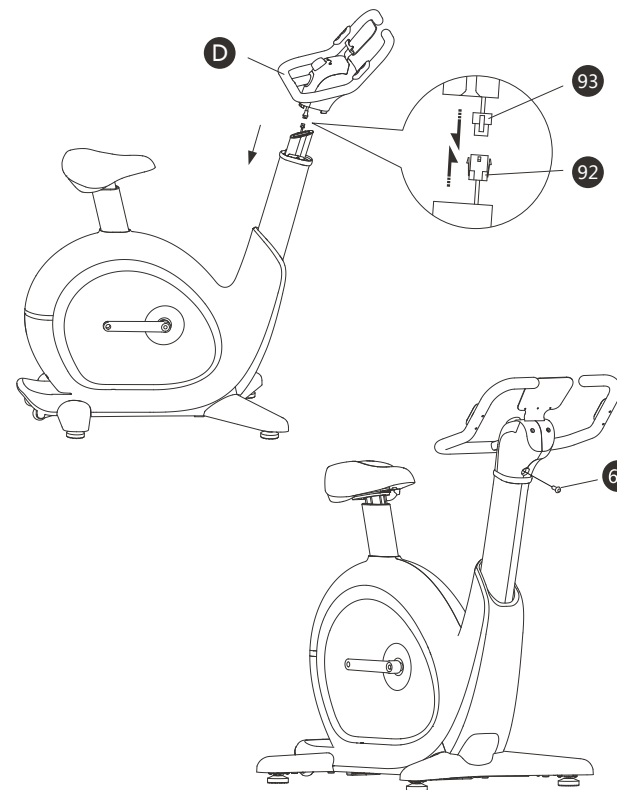
ASSEMBLY **STEP 5**



A Flip the assembly from this step and land the bike on the floor by feet.

B Remove styrofoam board from the main frame assembly.

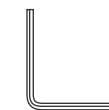
ASSEMBLY **STEP 6**



A Connect CONTROL BOARD CABLE-LOWER(92) and CONTROL BOARD CABLE-UPPER(93) together carefully.

B Insert HANDLEBAR SET(D) onto the CONSOLE MAST TUBE.

C Securely tighten HANDLEBAR SET(D) using ALLEN WRENCH (included) and ALLEN BOLT(63).



No.6 Allen Wrench



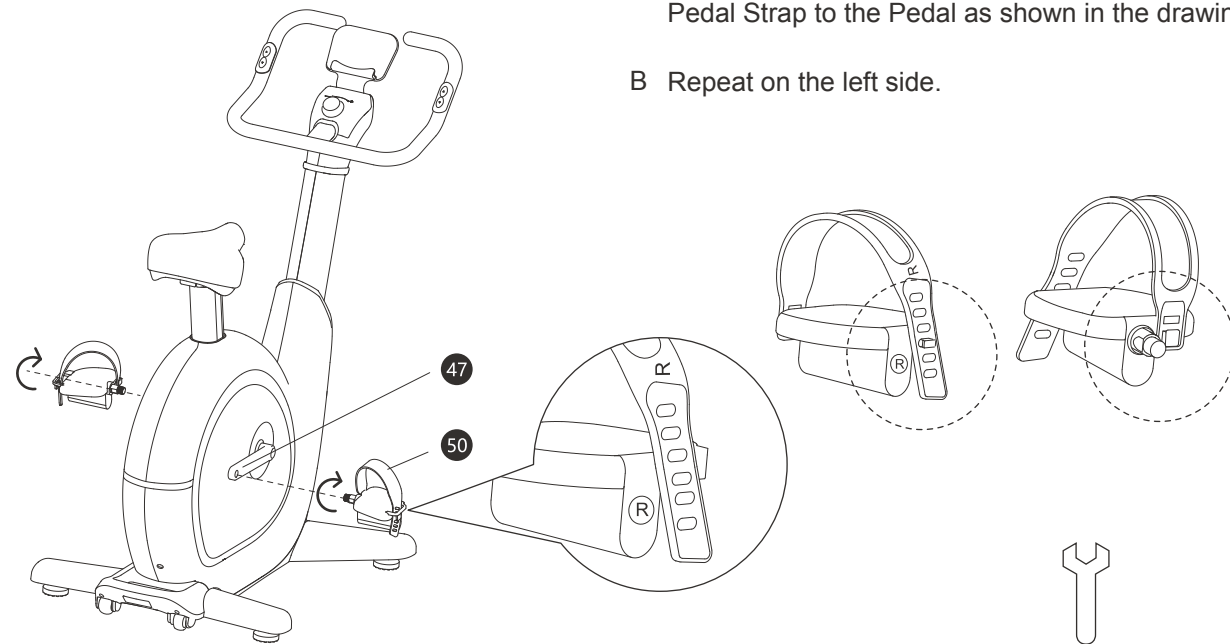
63 x1

ASSEMBLY *STEP 7*



- A Attach right side PEDAL-R (50) to the right side CRANK ARM-R (47) using OPEN WRENCH (included), fully tighten the Pedal. Attached the Pedal Strap to the Pedal as shown in the drawing.

- B Repeat on the left side.

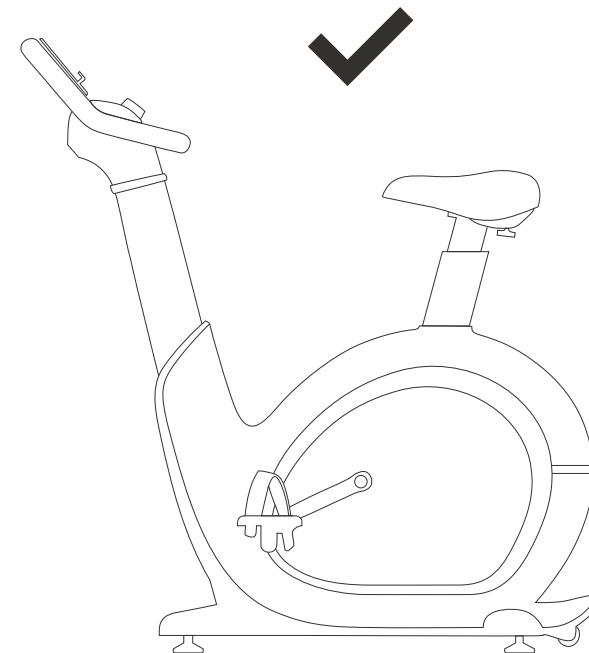


No.15 Open Wrench

ASSEMBLY *STEP 8*



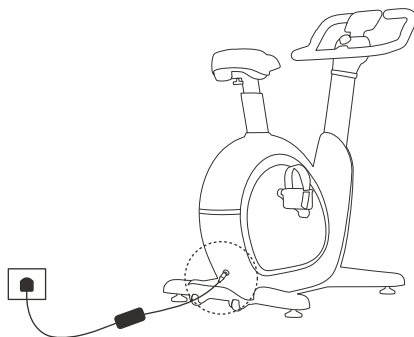
- A Congratulations, you have successfully assembled the Snailcle Bike.



HOW TO OPERATE

POWER ON YOUR SNAILCLE BIKE

Plug in the the round end to power inlet on the snailcle bike, and then plug in DC adaptor plug to a wall outlet show as below.



BEFORE RIDING GRAVITY SENSOR RETURN TO ZERO

This is an AI exercise bike, before ride on it, pressure transducer needs to recover the sensor value to 0. After connect to the power, please DO NOT ride on the bike until it sounds with 1 bleep. then machine will sound with 1 bleep. Do not follow this step may result in abnormal work of AI system, for example: Resistance sudden up and down, no resistance value display,or visual angle of bending.

BEFORE RIDING BLUETOOTH CONNECTION

This is an AI exercise bike, in order to enable AI functions and get best riding experience, please download **SNAILCLE APP** and connect Bluetooth before riding. You can find download details and APP application from **HOW TO USE SNAILCLE APP**.

BEFORE RIDING HANDLEBAR&SADDLE HEIGHT RETURN TO THE LOWEST POSITION

This is an AI exercise bike,after machine adjusts the pressure transducer sensor value to zero,for easier step on the machine, machine will recover the handle bar height and seat height to the lowest position.

After connected with Bluetooth and sit on the saddle,the machine will adjust the height of handle bar and saddle as per your height.To use this function,please go to APP homepage of “Me” to set your personal information first, then AI system can do this auto adjustment as per your height. If you do not set any personal information, the system will adjust handle bar&saddle height as per system default value.

If you still need to adjust the height after auto recommendation, please press the buttons on handle bar for adjustment, until find your right height.

You can save your personal comfortable height by APP setting.Go to "Settings", click "Memorize current positon" and "Confirm", then the system will remember your height, and adjust to your right position after everytime Bluetooth new connection.If current position is the same as you saved position in the system, then the machine will keep current position without moving.This will save time for everytime manual adjustment.

Attention:

Auto height adjustment function can only be enabled after machine is connected with Bluetooth and when you sit on the saddle.

LANGUAGE OF APP:

The language of APP display will change as per device language setting.

CONSOLE DISPLAY METRIC-IMPERIAL CONVERSION:

Press saddle up and down buttons together and hold on 3 seconds, machine will sound with 1 bleep, LED display will show "Metric"(km).

Press handlebar up and down buttons together and hold on 3 seconds, machine will sound with 1 bleep, LED display will show "Imperial"(mile).



SLEEPING MODE:

Under standby mode, the machine will enter into sleep mode if without any operation for 15 minutes. The connection of Bluetooth, or any touch of scroll wheel, or any movement of pedals will recall the system.

HOW TO START AND END:

To start the machine, please sit on the saddle and move the pedals. When the machine is connected with Bluetooth, but the pedals are without moving for 3 minutes, the resistance will low down to be zero, when you move the pedals again, all data will be added up on the original basis. You can press "End workout" or "Exit" buttons to finish riding. When the machine is not connected with Bluetooth, if pedals are without moving for 3 minutes, the system will end riding automatically, all data come to 0.

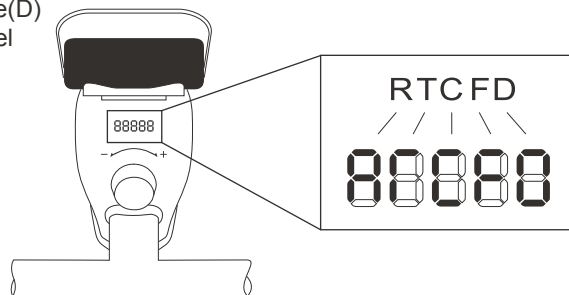
CONSOLE DISPLAY :

>When not connected with Snailcle App:

LED will show resistance level(R), time(T), calories(C), frequency(F), distance(D) in turn every 3 seconds, when knob the scroll wheel, will show resistance level and then in turn again.

>When connected with Snailcle App:

LED will only show resistance level.



OPERATION NOTICE:

1. Do not ride on the bike until you hear one sound of beep when the machine is electrified..
2. Suggest use SNAILCLE APP for AI functions and best riding experience.

HOW TO USE SNAILCLE APP

Notice: For better experience of APP, we may update the interface time to time, the final interface may be slightly different from this manual.

Explanation of PoS: PoS means "Posture Sensing Control", once enable this function, resistance will change automatically as per your body motion posture.

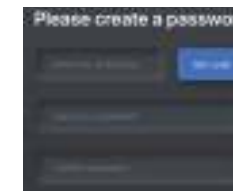
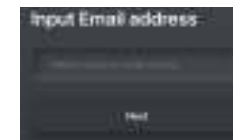
INSTALL SNAILCLE BIKE APP

Scan the QR barcode to directly locate SNAILCLE BIKE App in the APP Store on your device. In order to scan the QR Code, you may first download the QR READER App on your device. Available in both Apple App Store & Google Play Store. Or you can directly search "SNAILCLE" in Apple & Google Play Store.



APP REGISTER

Click the SNAILCLE APP you have installed, follow the guide steps to finish register. You need an email to finish register. To save all riding history, this register is recommended.

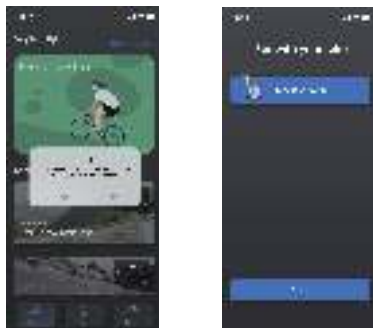




BLUETOOTH PAIRING

Open the SNAILCLE APP, click the “not connected” on the upper right hand conner of the home page and search for Bluetooth named “SL XXX”, click “pairing” to connect. Make sure the Bluetooth of your device is turned on before connection.

When Bluetooth is connected successfully, the upper right hand corner will show “connected”, and the machine will sound with 2 bleeps. When Bluetooth is disconnected, the upper right hand corner will show “Not connected”, and the machine will sound with 1 bleep.



APP APPLICATION

You will find “Cycling,Me,Settings” from APP interface.

Notice: Any enable of “PoS Contorl” under “Cycling”, or any enable of “PoS Contorl” under “Settings”will make “PoS Contorl” work under any mode.

Working logic:Different from traditional bike, the basic working logic of this bike is:

Driving power=frequency(rpm)*resistance

If frequency(rpm)*resistance value is bigger,the driving power will be bigger,and the speed will be bigger.

If frequency(rpm) value is small, or resistance value is small,the driving power will be small. The driving power also needs to subtract the resistance power.

Cycling: You will find random cycling and select routes here.

>Random cycling: You will get free riding from here, and knob the SCROLL WHEEL to adjust the resistance. If you enable PoS button, you will experience resistance change as per your body motion posture. Go "Setting", choose your habitual resistance control way from "PoS Direction".

>Select routes: You will find many routes to experience virtual active riding. From “Setting”, you can enable functions of “PoS control, AI posture steering, Slope Simulation”.

>>Pos Control: When you enable “PoS control”, the resistance will change as per your body motion posture.

>>AI posture steering: When you enable “AI posture steering”, and your body moves left and right, will bring you to the feeling of bending.

>>Slope Simulation: When you enable this button, will bring you to the feeling of uphill and downhill. When the map move to uphill, the height of saddle will be down, and the height of handle bar will be up. When the map move to downhill, the height of saddle will be up, and the height of handle bar will be down.



Resistance change and adjustment under select routes:

>Resistance change: If "PoS Contol" is not enabled, the resistance will only change as per slope change of the routes. If "PoS Contol" is enabled, then resistance will change as per both route slope and body motion posture.

>Resistance adjustment:You can increase or decrease the resistance by knob the SCROLL WHEEL.

To keep the best riding experience as per route slope, when you adjust the SCROLL WHEEL, the resistance will not stay on a fixed value, but will change as per route, however, the integrated resistance will increase or decrease as per your setting.





Me:When you click head portrait under “Me”, you can set your personal information, the detail information will help system to find right position for you when you enable AI functions .You can also find your riding history under “Me”.



SETTINGS:

>PoS System

>>**PoS Control:** When you enable this button, you will find:

>>**PoS Direction:** You can set resistance increase or decrease with directions of lean forward or sit straight. If you enable this function here, PoS Control will work under cycling mode.The resistance will change as per your "Control the direction" setting.

>>**Calibration:** When you enable this button, AI pressure transducer sensor control will calculate the resistance change as per your habitual posture when you lean forward and sit straight. The purpose of calibration is user friend way, make resistance change to fit your habitual body motion posture under cycling mode. Just follow the reminding to finish front and behind calibration setting.



SEAT POSITION MEMORY:

Seat auto adjustment: To use this function,please go to “Me” to set your personal information first, connect to Bluetooth and sit on saddle, enable this function, then AI system can do auto handle bar and seat adjustment as per your height. If you do not set any personal information, the system will adjust handle bar&saddle height as per system default value. If you still need to adjust the height after auto recommendation, please press the buttons on handle bar for adjustment, until find your right height. The system will default to enable this functon for you.

Memorize current position: After you finish handle bar&saddle height adjustment and find your right way, enable this function to memorize your riding height. When machine is reconnected to the power, will adjust to your riding height automatically, this will save time for every time adjustment before riding.

APP VERSION:

You can find current App version here.



FIRMWARE UPDATE:

Snailcle APP can update the firmware of the machine.Make sure the machine is connected to the internet and device Bluetooth. If red dot on the right side is found, then means need firmware update. Follow the steps to finish firmware update.





MORE SETTINGS:

>Metric-Imperial Conversion:

You can transfer "Metric"(km,kg,cm) and "Imperial"(mile,pound,inch) from here.

>Heart rate device:

To read heart rate value or use heart rate control training programs, you will need support of heart rate device.

Go "Settings-More settings-Heart rate device-Available device", search available device for connection. If your device name is not listed, then you will need to change a compatible device.

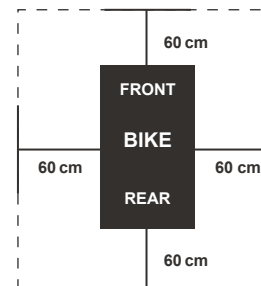
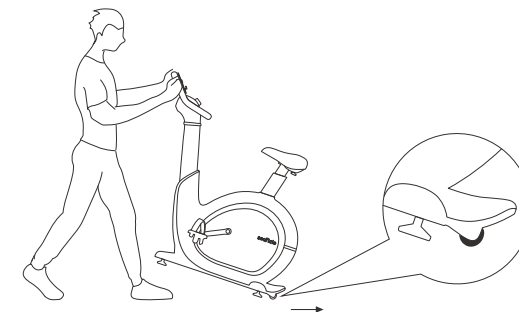
During heart rate control training and pulse recovery test, please do not take off the device until all programs and tests are finished.



HOW TO MOVE YOUR SNAILCLE BIKE

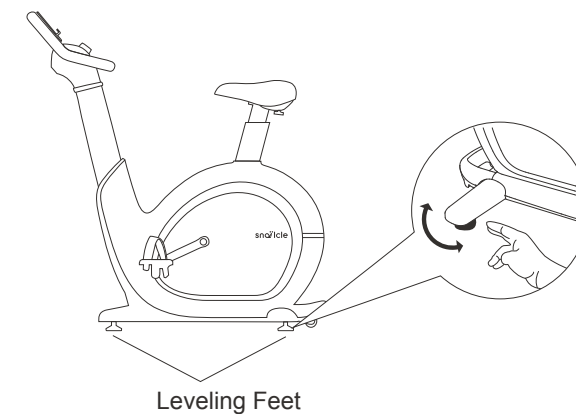
It is easy to move Snailcle Bike to desired place by one person. The moving wheels are designed at the rear, before moving the machine, please set the handlebar height to the lowest position first, then lift the handle bar and let the wheels touch the ground, then you can move it forward or back.

If the Snailcle Bike rocks on the floor after being set down, turn the leveling feet underneath the front or rear stabilizer until the rocking motion is eliminated.



LOCATION OF THE SNAILCLE BIKE

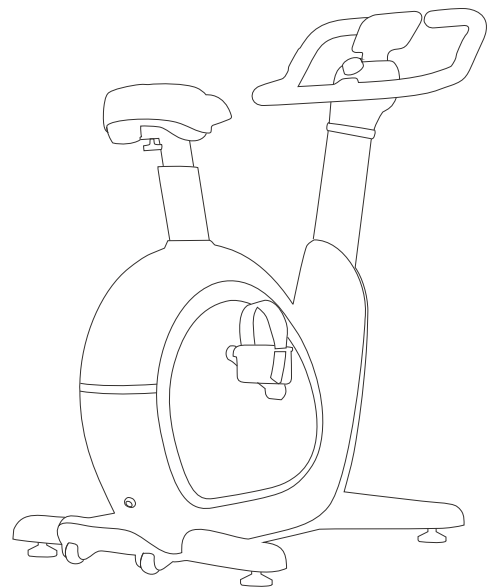
Place the Snailcle Bike on a level surface. There should be at least 60cm safe space on left, right, front and back sides before use. Do not place the bike in any vent or air openings. The Snailcle Bike should not be located in a garage, covered patio, near water or outdoors.



HOW TO ADJUST YOUR SNAILCLE BIKE



The Snailcle Bike can be adjusted for maximum comfort and exercise effectiveness. The instructions below describe one approach to adjusting the Snailcle Bike to ensure optimal user comfort and ideal body positioning, you may choose to adjust the Snailcle Bike differently.

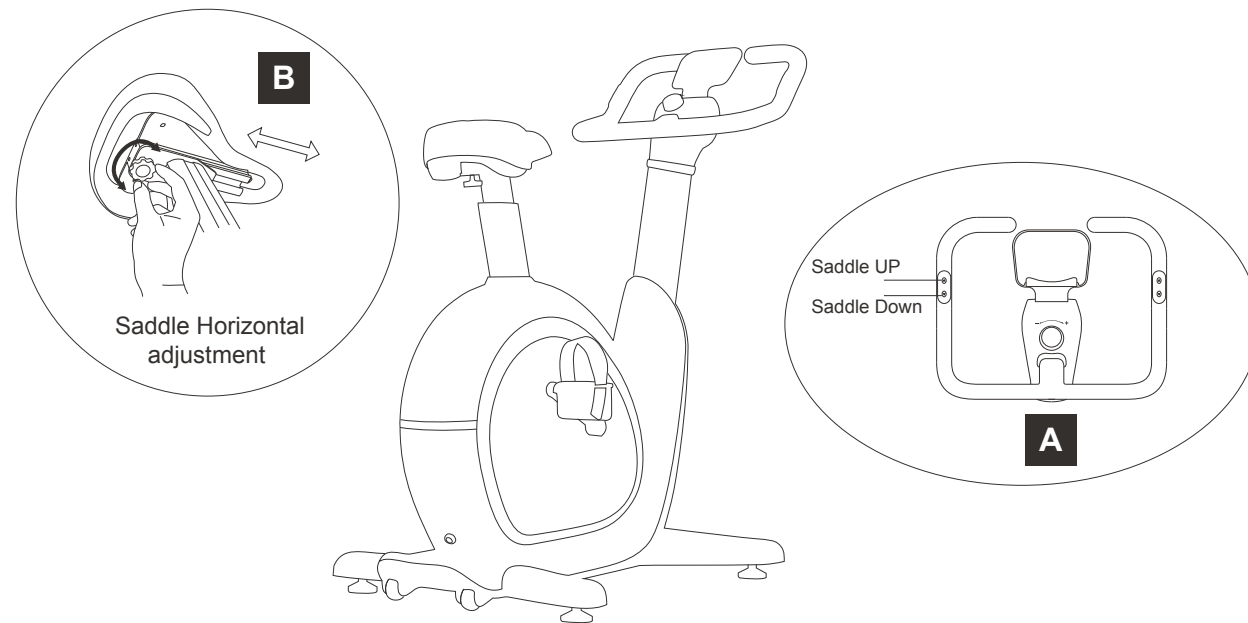


SADDLE ADJUSTMENT

Proper saddle height helps ensure maximum exercise efficiency and comfort, while reducing the risk of injury. Adjust the saddle height to make sure it's in proper position, one that keeps a slightly bend in your knee while your legs are in the extended position.

HANDLEBAR ADJUSTMENT

Proper position for the handlebar is based primarily on comfort. Typically, the handlebar should be positioned slightly higher than the saddle for beginning cyclists. Advanced cyclists could try different heights to get the arrangement most suitable for you.



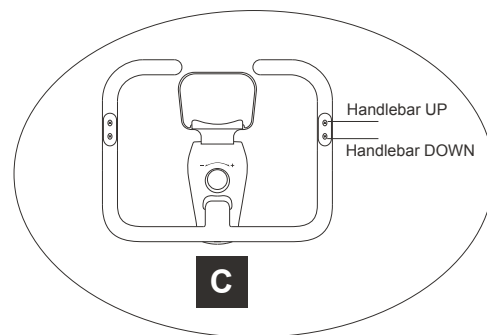
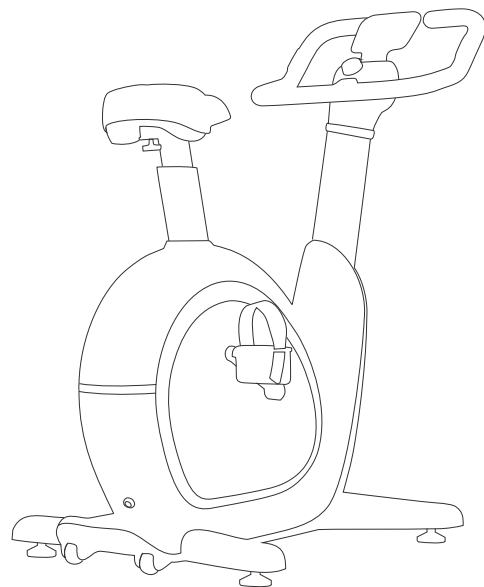
TO ADJUST THE SADDLE HEIGHT:

After connect with Bluetooth, snailcle bike will adjust your saddle height automatically based on your height when you get on the product. You can adjust the saddle height to your desired position by pressing the buttons on the left side of the handlebar (Fig A).

TO ADJUST THE SADDLE HORIZONTAL POSITION:

Rotate the knob to slide the saddle forward or backward as desired. Test the saddle slide for proper operation(Fig B).





TO ADJUST THE HANDLEBAR HEIGHT:

After connect with Bluetooth, snailcle bike will automatically adjust the handlebar height based on your weight when you get on. However you may still adjust the height to your desired position by pressing the buttons on the right side of the handlebar (Fig C).

TO ADJUST THE PEDAL STRAPS:

Place each your foot on the pedal, pull the pedal straps inward or outward to adjust the tightness of pedal strap. Make sure a tight fit between your shoes and the pedals. Keep your knees over your feet as you pedal.

RESISTANCE CONTROL

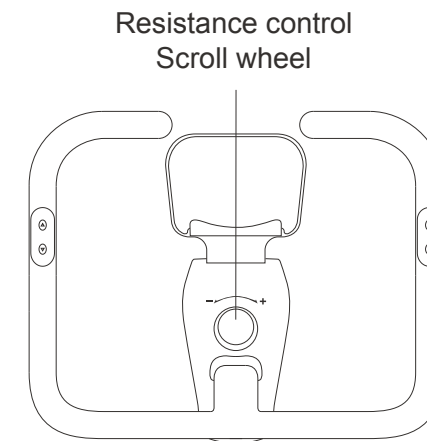
Snailcle bike will adjust the resistance automatically when you are in “cycling routes” or the bike identifies your center of gravity changes. However, the preferred level of difficulty in resistance can be regulated in fine increments by use of the resistance control scroll wheel.

To increase the resistance, turn the scroll wheel clockwise.

To decrease the resistance, turn the scroll wheel counter clockwise.

! WARNING

The Indoor Cycle have a free moving flywheel. Always pedal in a controlled manner and adjust your desired frequency(rpm) according to your own abilities. When feel short of breathe or uncomfortable, please stop immediately and consult a doctor if necessary.



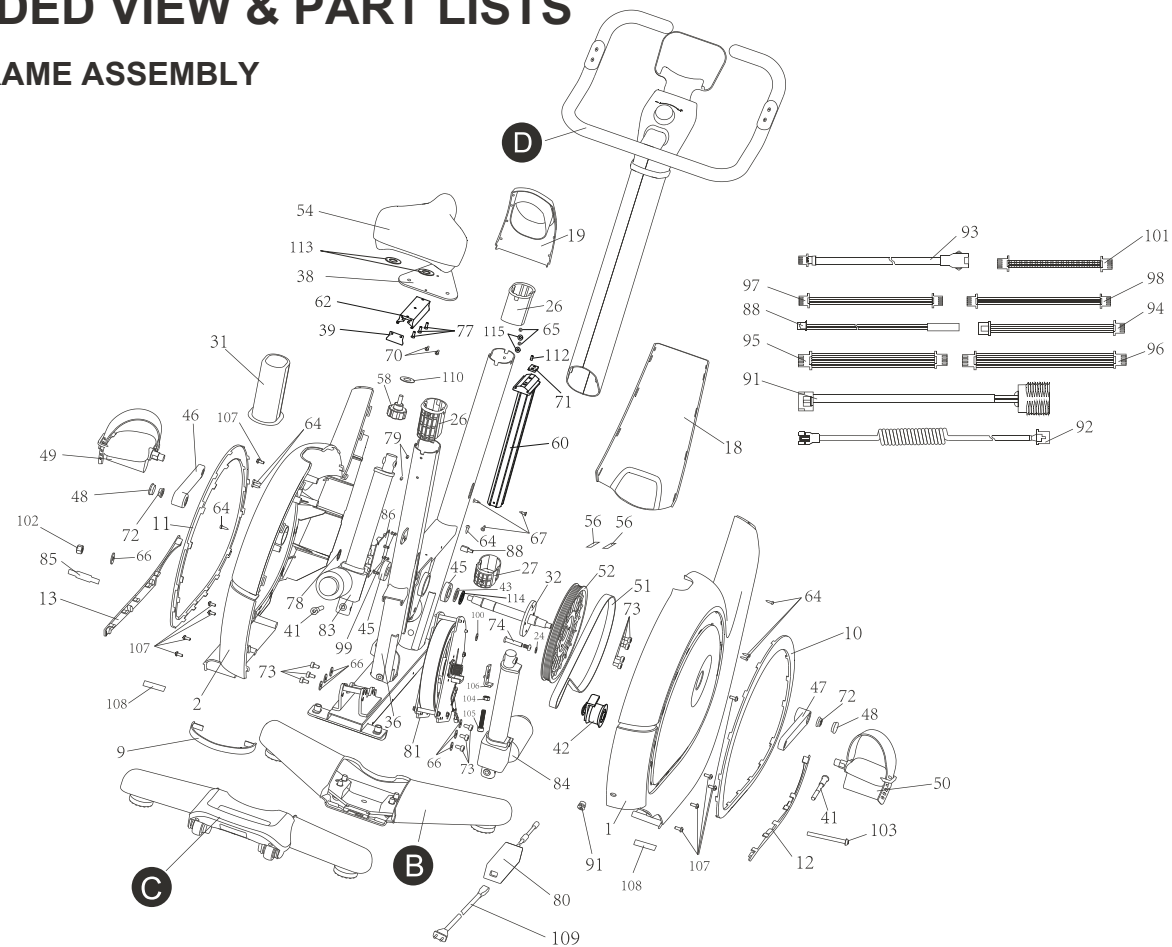
! WARNING

DO NOT ATTEMPT TO REMOVE YOUR FEET FROM THE PEDALS OR DISMOUNT THE MACHINE UNTIL BOTH THE PEDALS AND THE FLYWHEEL HAVE COMPLETELY STOPPED. Failure to follow these instructions may lead to loss of control and the potential for serious injury.

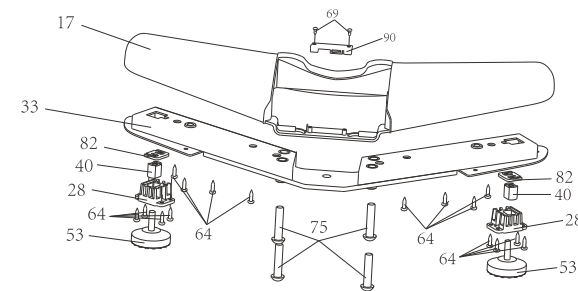


EXPLODED VIEW & PART LISTS

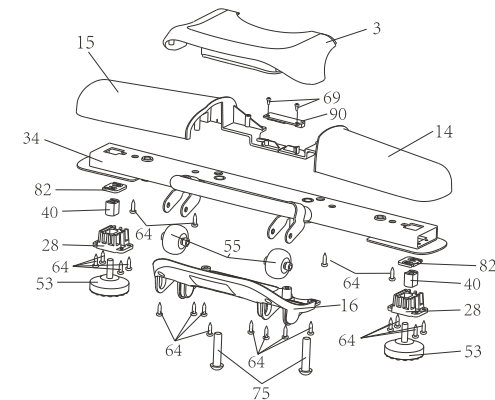
A. MAINFRAME ASSEMBLY



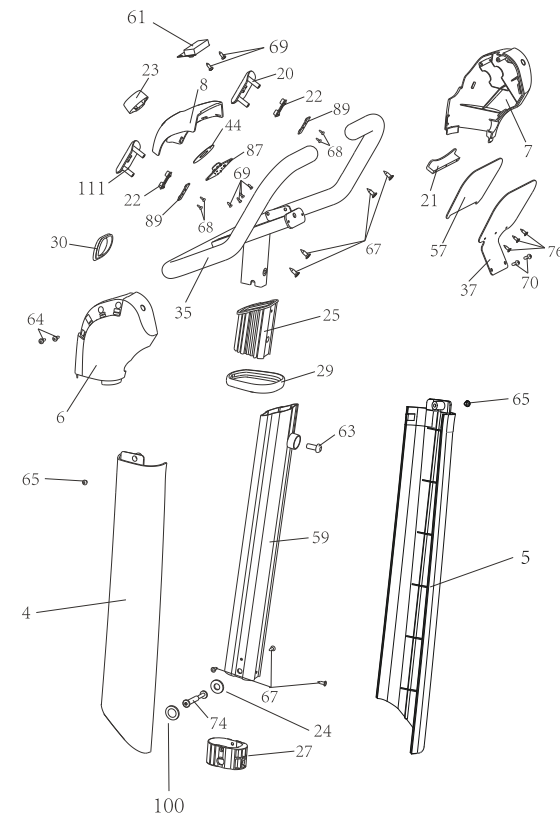
B. FRONT STABILIZER ASSEMBLY



C. REAR STABILIZER ASSEMBLY



D. HANDLE BAR SET ASSEMBLY





PARTS LIST

NO.	DESCRIPTION	QTY
1	Side cover-R	1
2	Side cover-L	1
3	Rear handle upper	1
4	Console mast cover-R	1
5	Console mast cover-L	1
6	Control panel cover-R	1
7	Control panel cover-L	1
8	Control panel-upper	1
9	Tail light cover	1
10	Accent piece-R	1
11	Accent piece-L	1
12	Deco cover-R	1
13	Deco cover-L	1
14	Rear Stab. cover-R	1
15	Rear Stab. cover-L	1
16	Rear handle bottom	1
17	Front Stab. cover	1

NO.	DESCRIPTION	QTY
18	Front cover	1
19	Mast boot	1
20	Key switch cover-L	1
21	Device holder	1
22	Buttoms	2
23	Scroll wheel	1
24	POM spacer (inner diameter 6mm)	2
25	Handleset sleeve	1
26	Mast sleeve-upper	2
27	Mast sleeve-lower	2
28	Sensor housing	4
29	Collar	1
30	Control panel spacer	1
31	Seat post sleeve	1
32	Crank set	1
33	Front stablizer	1
34	Rear stablizer	1
35	Handlebar set	1

PARTS LIST

NO.	DESCRIPTION	QTY
36	Main frame assembly	1
37	Phone holder	1
38	Saddle holder	1
39	Guide rail stoper	1
40	Spacer	4
41	M8 step bolt	2
42	Tension wheel assembly	1
43	POM spacer	1
44	Teflon stopper	1
45	Ball bearing	2
46	Crank-Left	1
47	Crank-Right	1
48	Crank cap	2
49	Pedal-Left	1
50	Pedal-Right	1
51	Drive Belt	1
52	Pully wheel	1
53	Leveller feet	4
54	Saddle assembly	1
55	2-inch Transport wheel	2
56	Graphite sheet	2
57	Anti-slippery pad	1
58	Knob with bolt	1

NO.	DESCRIPTION	QTY
59	Console mast tube assembly	1
60	Seat post assembly	1
61	Display panel	1
62	Slider	1
63	M8 x 20 bolt	1
64	ST4.2 x 16 screw	45
65	ST4.2 x 12 screw	4
66	Flywheel spacer	7
67	ST4.2 x 15 screw (Countersunk head)	10
68	ST2.2 x 6 screw	4
69	ST2.9 x 8 screw	10
70	M4 x 10 bolt	4
71	Saddle adjusting plate	1
72	M10 Flange nut	2
73	M6 x 12 bolt	10
74	Lock screw set	2
75	M10 x 45 bolt	6
76	ST2.9 x 10 screw (Countersunk head)	3
77	M5 x 15 screw (Countersunk head)	3
78	Shaft ring	1
79	M4 x 8 grub bolt	2
80	DC adaptor	1
81	Flywheel	1

NO.	DESCRIPTION	QTY
82	Pressure sensor	4
83	Lift motor-Front	1
84	Lift motor-Rear	1
85	PCB lamp board (optional)	1
86	MCU control board	1
87	Scroll wheel PCB	1
88	RPM sensor	1
89	Key pad	2
90	Pressor sensor adapter plate	2
91	DC Power cord-inner	1
92	Control board cable Lower	1
93	Control board cable Upper	1
94	Lamp board wire (optional)	1
95	Sensor ext. wire1	1
96	Sensor ext. wire2	1
97	Button connection wire1	1
98	Button connection wire2	1
99	Control board spacer	4
100	POM spacer (inner diameter 8mm)	2
101	Display panel wire	1
102	M6 locknut (Hexagon screw with half round head)	1
103	M6 x 68 screw	1
104	M8 Hexagonal nut	1

NO.	DESCRIPTION	QTY
105	M8 x 45 screw (Hexagon socket head screws)	1
106	pinch roller board	1
107	M4 x 12 screw	10
108	EVA pad	2
109	DC Adapter power cable	1
110	Knob spacer	1
111	Key switch cover-R	1
112	Fixing pin	1
113	Seat spacer	2
114	Wave shape washer	1
115	POM slice (inside diameter 4mm)	2

COMMON PRODUCT QUESTIONS

ARE THE SOUNDS MY SNAILCLE BIKE MAKES NORMAL?

Our Snailcle bikes are some of the quietest available because they use belt drives and EMS brake resistance. We use the highest grade bearings and belts to minimize noise. However, because the resistance system itself is so quiet, you will occasionally hear other slight mechanical noises. Unlike older, louder technologies, there are no motors, friction belts, or alternator noises to mask these sounds on our Snailcle Bike. These mechanical noises, which may or may not be intermittent, are normal and are caused by the transfer of significant amounts of energy to a rapidly spinning flywheel. All bearings, belts and other rotating parts will generate some noise which will transmit through the casing and frame. It is also normal for these sounds to change slightly during a workout and over time because of thermal expansion of the parts.

WHY IS THE SNAILCLE BIKE I HAD DELIVERED LOUDER NOISE THAN ONE AT THE STORE?

All fitness products seem quieter in a large store showroom because there is generally more background noise than in your home. Also, there will be less reverberation on a carpeted concrete floor than on a wood overlay floor. Sometimes a heavy rubber mat will help reduce reverberation through the floor. If a fitness product is placed close to a wall, there will be more reflected noise.

HOW LONG WILL THE BELT LAST?

The computer modeling we have done indicated virtually thousands of maintenance free hours. You should not have to replace the belt as long as you have the snailcle Bike.

CAN I MOVE THE SNAILCLE BIKE EASILY ONCE IT IS ASSEMBLED?

Your Snailcle Bike has a pair of transport wheels built into the rear stabilizer tube. Please follow the moving the snailcle Bike section to transport your Snailcle Bike. It is important that you place your Snailcle Bike in a comfortable and inviting room. Your Snailcle Bike is designed to use minimal floor space. Many people will place their Snailcle Bikes facing the TV or a picture window. If at all possible, avoid putting your Snailcle Bike in an unfinished basement. To make exercise a desirable daily activity for you, the Snailcle Bike should be in a comfortable setting.

TROUBLESHOOTING

PROBLEM: The Snailcle Bike makes a squeaking or chirping noise.

SOLUTION: Verify the following:

- The Snailcle Bike is on a level surface.
- Loosen all bolts attached during the assembly process, grease the threads, and tighten again.

If this does not remedy the problem, you may
CONTACT DEALER TECH SUPPORT AT THE NUMBER ON THE WARRANTY CARD

The following information may be asked of you when you call. Please have these items readily available:

- Model Name
- Serial Number
- Proof of Purchase (receipt or credit card statement)

You may find more troubleshooting suggestions on the customer support section of our website. Contact customer support.

In order for Customer Tech Support to service your Snailcle Bike, they may need to ask detailed questions about the symptoms that are occurring. Some troubleshooting questions that may be asked are:

- Does this problem occur with every use? With every user?
- If you are hearing a noise, does it come from the front or the back? What kind of noise is it (thumping, grinding, squeaking, chirping etc.)?
- Has the machine been lubricated and maintained as per the maintenance schedule?

Answering these and other questions will give the technicians the ability to send proper replacement parts and the service necessary to get you and your Snailcle Bike running again!



MAINTENANCE



The safety level given by the design of the snailcle Bike can only be maintained when the equipment is regularly examined for damage and wear. Inoperable components should be replaced or the equipment should be put out of use until it is repaired.

DAILY

- Wipe down the Snailcle Bike after each use to remove sweat and moisture. Use soap and water, or a diluted non-abrasive domestic cleaner solution. Rinse to remove detergent residue and then dry off.
- Before each session, inspect for loose components such as pedals or cranks prior to commencing the next use. Tighten up any loose parts.

WEEKLY

- Check for proper seat post and handlebar movement.
- Adjust and lubricate the moving parts if necessary.
- Check to make sure the crank arms are tightened to the bottom bracket.
- Inspect all parts, nuts, bolts, or screws for adjustments, replacements or maintenance.

MONTHLY

- Inspect the frame and main assembly components for rust or corrosion. Use a small, wire brush to remove rust build-up in small crevasses, such as leveling feet, quick release levers and other bolt assemblies.
- Inspect all wear items for adjustments or possible part replacement. Give particular attention to the following:
 - A) Inspect handgrip foam for wear. Excessive wear or dryness indicates replacement is required.
 - B) Inspect seat pad for wear. Rips, tears or excessive movement indicates replacement is required.
 - C) Inspect pedals for play. Excessive movement of pedals indicates replacement is required.
- Inspect the belt for tensioning by rotating the crank to drive the flywheel forward. Do this motion in 1/4 turns to assess if there is free play between the crank and the flywheel.
- Please lubricate the seat post regularly with grease if any wear or noise appears.

OTHER DECLARATIONS

COMPLIANCES:

Snailcle Bike complies with all applicable codes and regulations. For a complete list of compliances, please visit www.snailcle.com.

FCC CAUTIONS:

Any changes or modifications not expressly approved by the party responsible for compliance could void the user's authority to operate the equipment. This device complies with Part 15 of the FCC Rules. Operation is subject to the following two conditions: (1) This device may not cause harmful interference, and (2) this device must accept any interference received, including interference that may cause undesired operation.

This equipment has been tested and found to comply with the limits for a Class B digital device, pursuant to Part 15 of the FCC Rules. These limits are designed to provide reasonable protection against harmful interference in a residential installation. This equipment generates uses and can radiate radio frequency energy and, if not installed and used in accordance with the instructions, may cause harmful interference to radio communications. However, there is no guarantee that interference will not occur in a particular installation. If this equipment does cause harmful interference to radio or television reception, which can be determined by turning the equipment off and on, the user is encouraged to try to correct the interference by one of the following measures:

- Reorient or relocate the receiving antenna.
- Increase the separation between the equipment and receiver.
- Connect the equipment into an outlet on a circuit different from that to which the receiver is connected.
- Consult the dealer or an experienced radio/TV technician for help.

FCC Radiation Exposure Statement: This equipment complies with FCC radiation exposure limits set forth for an uncontrolled environment. This transmitter must not be co-located or operating in conjunction with any other antenna or transmitter.

Waste Disposal

This product is recyclable.

At the end of its useful life please dispose of this article correctly and safely (local refuse sites).



One-Year Limited Warranty

The manufacturer warrants this product against defects in materials and workmanship on functional parts, for a period of 1 year from the original date of purchase. Your sales receipt showing the date of purchase of the product is your proof of purchase. Keep it in a safe place for future reference. This warranty is subject to personal use only, commercial or rental applications will not be covered.

This product is made with the highest quality materials and is warranted to be free from defects in materials and workmanship at the time of purchase. This limited warranty applies to products manufactured or distributed by the manufacturer, are delivered in the continental United States or Canada and extends to the original purchaser, or gift recipient. This warranty becomes valid at the time of purchase and terminates either by the specified time frame listed above and/or owner transfer. Any refunds or monetary compensations must be claimed through the place of purchase (retailer), and not through the manufacturer. Any extended warranties (warranties that cover above and beyond this manufacturer warranty) that are sold through a retailer or third party, are not directly correlated with this products' limited warranty, and may be redirected to said retailer or third party for coverage.

This warranty extends through the manufacturer of the product, and covers functional parts only. Cosmetics are not covered, unless unequivocally determined it is a workmanship defect. Shipping damage should be addressed with the shipping company, retailer, or place of purchase, not the manufacturer unless the manufacturer was the direct shipper.

The manufacturer's sole obligation under this warranty shall be limited to furnishing the original purchaser replacement parts for units deemed repairable by the supplier's warranty department. The purchaser is responsible for insuring any parts shipped or returned, if desired. The purchaser is responsible to prepay any shipping charges (both ways) including, but not limited to taxes and duties. All exchanged parts and products replaced under this warranty will become the property of manufacturer. The manufacturer reserves the right to change manufacturers of replacement parts or

products for use, in order to cover any existing warranty.

The purchaser may be asked to provide the supplier with proof of purchase documents (including the date of purchase) if requested. Any evidence of alteration, erasing, or forgery of proof of purchase documents will be just cause to VOID this limited warranty. Products, in which the serial number has been defaced or removed are not eligible for warranty coverage.

This warranty does not apply if the unit has been subject to negligence, fabrication, misuse, abuse, or repairs, alteration by non-manufacturer authorized personnel, inappropriate installations, or any case beyond the control of the manufacturer. Examples of warranty invalidation may also include, but are not limited to:

- Use of lacquer or paints in (and around) the product
- Product placed on non-approved surfaces
- Electrical requirement deficiencies
- Use on extension cords/timers/surge protectors/GFCI
- Outdoor applications
- Normal wear/tear/weathering
- Pet/consumer accidents
- Purchases from dealers unauthorized by the manufacturer (Authorization in writing)

The manufacturer shall not be liable for any loss due to use (or misuse) of the product or other incidental or consequential costs, expense or damages without irrefutable foundations. Under no circumstances shall the manufacturer or any of its representatives be held liable for injury to any person or damage to any property, however arising. Any implied warranty shall have duration equal of the applicable warranty stated above. Specifications are subject to change without notice or obligation.

This limited warranty gives the original purchaser specific legal rights. Other rights may vary from state to state.