

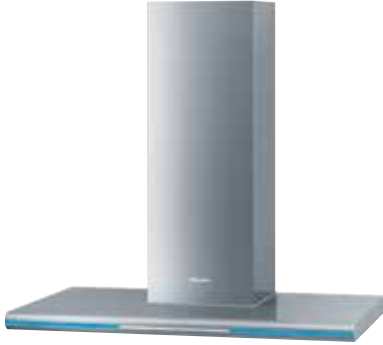
Lumen Wall
Ventilation Hood

DA 6296 W



Lumen Wall Ventilation Hood

DA 6296 W



FEATURES

- NEW: LED ClearView lighting
- NEW: Con@ctivity — communication between hood and cooktop
- Front mounted, backlit controls
- Four fan speeds (incl. intensive)
- Delayed shutdown for 5 or 15 minutes
- Dishwasher-safe metal filters
- Multi-colored LED glass-edge lighting with four preset colors and a setting that transitions through 196,000 colors with a change sequence of 1 or 15 minute intervals, enabling a favorite selection
- Polished stainless steel logo
- Stainless steel finish or RAL color options

SPECIFICATIONS

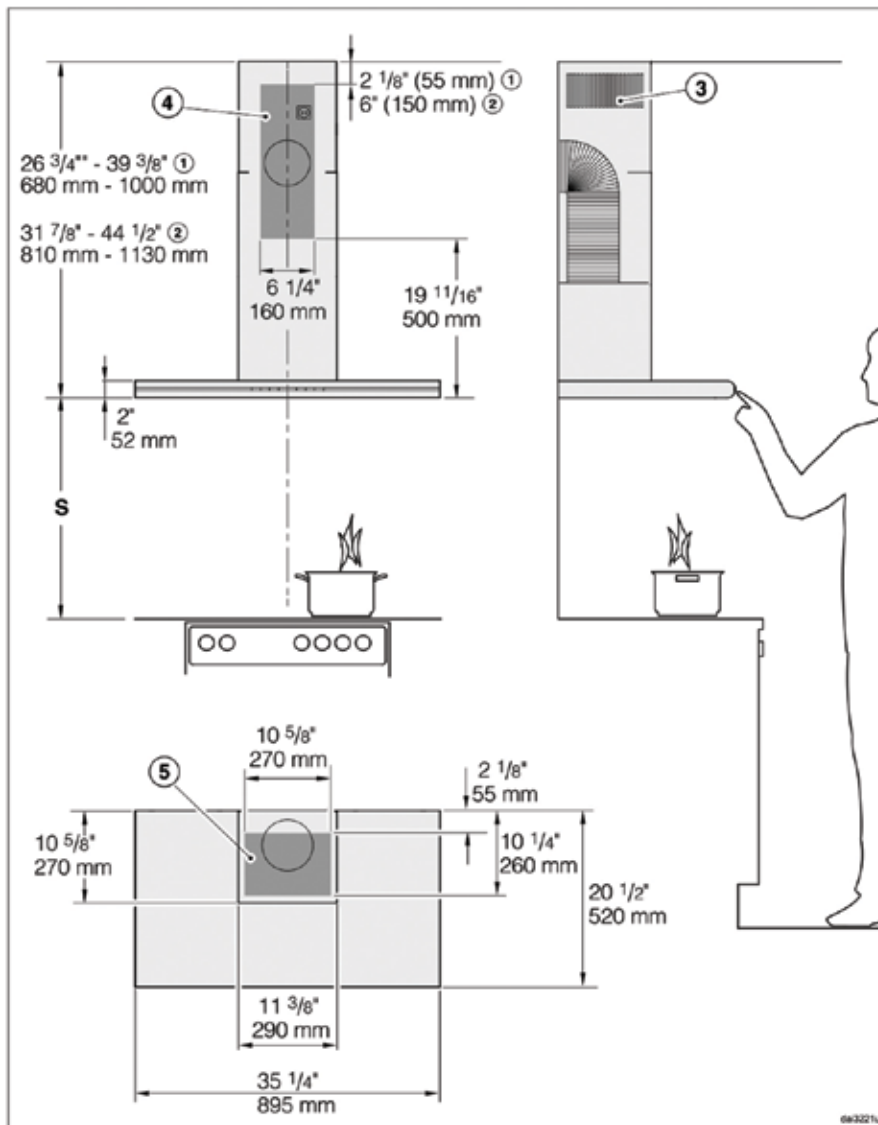
DA 6296 W — Item 28629650USA

Vented or Recirculating	625 CFM setting
Canopy Dimensions	35 ¹ / ₄ " (895mm) W x 2" (52mm) H x 20 ¹ / ₂ " (520mm) D
Dimensions (Standard Height) - Vented	26 ³ / ₄ " — 39 ³ / ₈ " (680—1000mm) H
Dimensions (Standard Height) - Recirculating	31 ⁷ / ₈ " — 44 ¹ / ₂ " (810—1130mm) H
Chimney Dimensions	11 ³ / ₈ " (290mm) W x 10 ⁵ / ₈ " (270mm) D
Minimum distance above cooktop	Please refer to page 26 of the installation manual
Color	Available in brushed stainless steel or RAL colors
Electrical	
Electrical Requirements	120 V, 60 Hz, 15 Amps
Power Cord	Molded plug 6.5 ft (2m) NEMA 5-15
Electrical Rating	369 W (Blower: 350 W; Lighting: 3x3 W; Glass edge lighting: 10 W)
Optional Accessories	
Recirculating Kit	DUW 20 Recirculating Kit
OdorFree Charcoal Filter	DKF 12-1 OdorFree Charcoal Filter
Reducing Collar (air flow max. 400 CFM)	
Shipping	
Shipping Weight	59 lbs (27kg)
Support	
Call	800.843.7231
20/20	©2020technologies.com

Lumen Wall Ventilation Hood DA 6296 W



PRODUCT VIEW



The drawing is not to scale.

- ① Extraction
- ② Recirculation
- ③ Air vent positioned at top for recirculation
- ④⑤ Mounting area (only ④ is required for recirculation ventilation hoods). Wall and ceiling area for exhaust duct opening and for wall socket installation. Only the wall socket installation is required for recirculation hoods.

Vent collar \varnothing 6" (150 mm), with adapter \varnothing 5" (125 mm).

PLEASE NOTE: The majority of the weight of the installed ventilation system will be supported by the lower retaining plate. It must be firmly attached to the stud framing behind the drywall. If studs are not available in the required locations, a plywood backing (min. 1/2" (13 mm) thick) spanning at least two studs must be installed. Failure to adequately support the weight as stated may result in the ventilation system falling off the wall, causing personal injury and property damage.